

Depression in Alzheimer's disease

Elsworthy, Richard; Aldred, Sarah

DOI:
[10.3233/JAD-180780](https://doi.org/10.3233/JAD-180780)

License:
None: All rights reserved

Document Version
Peer reviewed version

Citation for published version (Harvard):
Elsworthy, R & Aldred, S 2019, 'Depression in Alzheimer's disease: an alternative role for selective serotonin reuptake inhibitors?', *Journal of Alzheimer's Disease*, vol. 69, no. 3, pp. 651-661. <https://doi.org/10.3233/JAD-180780>

[Link to publication on Research at Birmingham portal](#)

Publisher Rights Statement:

Checked for eligibility: 16/08/2019

Elsworthy, R.J. and Aldred, S., 2019. Depression in Alzheimer's Disease: An Alternative Role for Selective Serotonin Reuptake Inhibitors?. *Journal of Alzheimer's disease: JAD*, 69(3), p.651.

The final publication is available at IOS Press through: <http://dx.doi.org/10.3233/JAD-180780>

General rights

Unless a licence is specified above, all rights (including copyright and moral rights) in this document are retained by the authors and/or the copyright holders. The express permission of the copyright holder must be obtained for any use of this material other than for purposes permitted by law.

- Users may freely distribute the URL that is used to identify this publication.
- Users may download and/or print one copy of the publication from the University of Birmingham research portal for the purpose of private study or non-commercial research.
- User may use extracts from the document in line with the concept of 'fair dealing' under the Copyright, Designs and Patents Act 1988 (?)
- Users may not further distribute the material nor use it for the purposes of commercial gain.

Where a licence is displayed above, please note the terms and conditions of the licence govern your use of this document.

When citing, please reference the published version.

Take down policy

While the University of Birmingham exercises care and attention in making items available there are rare occasions when an item has been uploaded in error or has been deemed to be commercially or otherwise sensitive.

If you believe that this is the case for this document, please contact UBIRA@lists.bham.ac.uk providing details and we will remove access to the work immediately and investigate.

ALZHEIMER'S DISEASE, DEPRESSION AND SSRI'S

**DEPRESSION IN ALZHEIMER'S DISEASE: AN ALTERNATIVE ROLE FOR
SELECTIVE SEROTONIN REUPTAKE INHIBITORS?**

AUTHORS AND AFFILIATIONS:

RICHARD J ELSWORTHY
DR SARAH ALDRED

School of Sport, Exercise and Rehabilitation Sciences, College of Life and Environmental
Sciences, University of Birmingham, UK

RUNNING TITLE:

ALZHEIMER'S DISEASE, DEPRESSION AND SSRI'S

CORRESPONDANCE DETAILS:

School of Sport, Exercise and Rehabilitation Sciences
University of Birmingham
Edgbaston
Birmingham
B15 2TT
UK
TEL: +44 (0)121 414 7284
EMAIL: s.aldred.1@bham.ac.uk

ABSTRACT

Depression is a common co-morbidity seen in people with Alzheimer's disease (AD). However, the successful treatment of depressive symptoms in people with AD is rarely seen. In fact, multiple randomised controlled trials have shown selective serotonin reuptake inhibitors (SSRI's), the current best recommended treatment for depression, to be ineffective in treating depressive symptoms in people with AD. One explanation for this lack of treatment effect may be that depressive symptoms can reflect the progression of AD, rather than clinical depression and are a consequence of more severe neurodegeneration.

This raises several questions regarding not only the efficacy of SSRI's in the treatment of depression in people with AD but also regarding the accuracy of diagnosis of depression in AD. However, there may be a rationale for the prescription of SSRI's in early AD. Even in the absence of depression, SSRI's have been shown to slow the conversion from mild cognitive impairment to AD. This may be attributed to the effect of SSRI's on the processing of amyloid- β precursor protein (A β PP), which may cause a reduction in the accumulation of amyloid- β (A β). Thus, although SSRI's may lack efficacy in treating depression in people with AD, they may hold therapeutic potential for treating and delaying the progression of AD especially if treatment begins in the early stages of AD. This article reviews the current consensus for SSRI treatment of depression in people with AD and highlights the possibility of SSRI's being a treatment option for delaying the progression of AD.

KEYWORDS Alzheimer Disease; Depression; Antidepressive agents, second generation; Amyloidosis; Aging; Ageing

INTRODUCTION

The average life-span for men and women is increasing in both high income and developing countries [1]. As life expectancy increases so too does the predicted incidence of dementia, with age being the biggest risk factor. It is estimated that more than 50 million people are living with dementia worldwide. This number is predicted to rapidly rise with over 9.9 million new cases every year. Perhaps most concerning is that even the most effective treatment options currently available will not be able to prevent dramatic increases in the prevalence of dementia. One approach to improving the effectiveness of current treatments is to develop better diagnostic tools enabling earlier identification of dementia [2]. This will allow both pharmacological and lifestyle interventions to be prescribed to limit neurodegeneration, preserve cognitive function and maintain a higher quality of life before the severity of the disease progresses.

Alzheimer's disease (AD) is the most common form of dementia accounting for over 60% of dementia diagnoses [3] and is characterised by the accumulation of amyloid- β ($A\beta$) and the formation of neurofibrillary tangles resulting from abnormal tau protein phosphorylation [4, 5]. In addition, loss of synaptic function and neuronal loss are widely reported [6, 7]. The generation of highly toxic, soluble oligomeric forms of $A\beta$ in addition to elevated oxidative stress and impaired immune functioning have been proposed as key players in the progression of AD. The subsequent accumulation of these neuropathological lesions leads to neurodegeneration, reduced cognitive ability and impaired everyday functioning which is ultimately fatal [8-10].

Neuropsychiatric symptoms (NPS) refer to a heterogenous grouping of non-cognitive symptoms that are common in people with AD, such as changes in mood, perception and behaviour. The presentation of NPS is related to a poorer quality of life and an increase in progression from mild cognitive impairment (MCI) to severe AD. Worsening of NPS is also

ALZHEIMER'S DISEASE, DEPRESSION AND SSRI'S

related to an increased risk of cognitive decline and onset of AD [11, 12]. In people with AD, apathy and depression are the most commonly diagnosed NPS [13]. Apathy is characterised by the loss of motivation that is not attributable to cognitive decline or emotional distress. Often apathy is considered as a symptom of depression. Although they can present together, the key distinction of apathy from depression is the involvement of emotional distress [14] and therefore effective treatment for both of these NPS may be different. It has also been found that depression and apathy are associated with different measures of cognitive dysfunction [15]. Current pharmacological treatment for apathy in AD, including the use of selective Serotonin reuptake inhibitors (SSRI's) has shown mixed results for alleviating symptoms [16, 17]. Despite limitations of the research outcomes by the difficulty in measuring clinically significant apathy and inconsistent methodologies, treatment with Escitalopram reduced apathy and positively impacted measures of disability [18].

Depression precedes 10-15% of dementia cases and the risk of developing late-life depression is significantly higher in people with MCI (21.7%) and dementia (24.7%) compared to cognitively healthy populations (10.5%) [19, 20]. Depressive symptoms can also manifest concurrently in people with MCI [21]. In fact, the association between depression and a decline in cognitive impairment may be more pronounced in MCI compared to those who already have a diagnosis of AD [22]. Research has shown that depression is associated with an increased risk of AD [23] and recurring depressive episodes are particularly pernicious [24]. In addition, episodes of depression in mid and late life, not only increase the risk of AD but are also thought to speed up the progression of AD manifestation and degeneration, especially in people with MCI [25-29]. The prodromal nature of AD may be a causative factor in the development of late-life depression. For example the presentation of executive dysfunction, that contributes to the development of clinically significant cognitive impairment, is common in both AD and late-life depression [30]. However, not all people

with 'depression-executive dysfunction syndrome progress to AD [31, 32]. This provides a challenge when determining onset of depressive symptoms independent of cognitive decline and other closely related syndromes [33].

'DEPRESSION' IN AD

The overlapping symptoms of AD and depression provide clinicians and researchers with a challenge. Are symptoms that are normally associated with depression in late life present as a result of the neurodegenerative course of AD or are they symptoms of depression? This distinction is of course vital to the successful treatment of late-life depression and may help to elucidate why treatment resistance is greater in older age populations [34-36]. The symptoms of depression can manifest as a combination of prolonged sadness, agitation, feelings of worthlessness and hopelessness and reoccurring suicidal thoughts. Depression in AD is typically of a milder presentation than major depression, yet it can still significantly effect quality of life [37].

A worsening of depressive symptoms in older adults has been shown to be a significant predictor of those who may develop AD [38]. The risk of depression in AD has been linked to several factors such as, perturbed neurotransmitter signalling, elevated inflammation, Tau pathology and A β accumulation [39]. In addition, AD and late-life depression are associated with overlapping neuroanatomical changes. A reduction in hippocampal volume and increased neuronal death in areas related to emotional regulation and cognition are associated with both conditions [40]. There are, however, some subtle differences that may be a powerful tool to distinguish depression due to AD and late-life depression. People with AD demonstrate greater total brain volume deficits and asymmetrical degeneration of the hippocampus and amygdala. These asymmetries may also be associated with the progression of AD [41].

THE RELEVANCE OF AMYLOID- β FOR DEPRESSION IN AD

The accumulation of A β appears to have some association with depression as people with a lifetime history of major depression were seen to have increased brain A β deposition [42, 43] and interestingly people with AD, who have a history of major depression show even greater A β plaques and neurofibrillary tangles in the hippocampal region, compared to people with AD without depression [44]. However, without a clear cut-off for the relationship between A β in the brain and the development of clinical symptoms it is difficult to draw causative conclusions. Nevertheless, the validity of plasma A β as a marker of depression in AD has been of significant interest, as collection of a plasma sample is minimally invasive and easily accessible. Higher levels of plasma A β have been associated with an increased risk of clinically relevant depressive symptoms, especially in people who go on to develop AD within 11 years [45, 46]. The longer amyloid peptide, A β -42 is prone to aggregation and has been shown to be the most cytotoxic peptide, due to its interaction and uptake into cells [47]. A β -42 has been found to be a positive predictor of both late-onset depression and AD [48]. In addition, people with a higher ratio of A β -40:42 were found to have the greatest impairment in cognitive function and represented a prodromal manifestation of depression in AD, termed 'A β associated' depression. An important consideration when determining if A β associated depression reflects the prodromal onset of AD is that not all people with an elevated A β load develop AD. The lack of relationship between A β and AD in some people is a major challenge in AD research.

A β 42 accumulation is also one of a number of factors affected by the genetic mutation of Apolipoprotein E (APOE). People who carry the one or two copies of the APOE e4 allele are at an increased risk of developing AD [49] and carriers of APOE e4 are more likely to display increased accumulation of A β 42 in the brain at a younger age [50, 51]. APOE e4 carriers can be at a 50% greater risk for developing AD when compared to people carrying

one copy of the protective APOE e2 gene. This translates into an 18-23 year difference in age of onset [49]. Interestingly, APOE e4 carriers are also at an increased risk of developing depression, further implying a shared mechanism between depression and AD pathology [52].

Amyloid- β protein precursor (A β PP) processing is crucial to A β generation and gaining a better understanding of altered A β PP processing may provide insight into the role of A β in AD and late-life depression. Amyloid- β is formed via enzymatic cleavage of A β PP by a β -secretase enzyme. This cleavage liberates the secreted amino-terminal fragment- β (A β PP- β) and an A β intracellular C-terminal fragment (CTF) of 99 amino acids. Alternatively, A β PP cleavage can be initiated by an α -secretase. This pathway precludes A β formation by liberating the neuroprotective secreted amyloid- β protein precursor α (sA β PP- α) amino terminal fragment and an 83-amino acid CTF. The cleavage of these CTF's by γ -secretase results in the formation of p3 or A β and the amino-terminal A β PP intracellular domain (for reviews see: [53, 54]).

Members of the 'a disintegrin and metalloproteinase' (ADAM) family are known to have α -secretase activity and are thought to act with redundancy, however, compelling evidence suggests that ADAM10 is the major physiologically relevant α -secretase involved in the processing of A β PP [55, 56]. Beta-site cleaving enzyme (BACE-1) is the major enzyme in β -secretase A β PP cleavage [57]. Research into the effects of late-life depression on A β PP processing is very limited, due to the difficulty in accessing suitable tissue and difficulty in producing a depression-like state in cellular models. However, platelets represent an excellent model for studying A β PP processing as they express all of the required machinery to generate A β peptides. In addition, platelets can secrete neurotransmitters, inflammatory markers and growth factors, such as brain-derived neurotrophic factor (BDNF), which are altered in depression and AD patients [58, 59]. In platelets A β PP is expressed either as the 751kDa or 770kDa isoforms in contrast to the 695kDa isoform in neurons. Despite this difference in

ALZHEIMER'S DISEASE, DEPRESSION AND SSRI'S

sequence/peptide length, all isoforms are processed in the same way by the secretase enzymes as described earlier at both the cell membrane and inside the cell in the secretory pathway [59]. Not only this, platelet expression and activity of ADAM10, BACE-1 and the ratio of secreted A β PP have all been found to be significantly altered in people with AD [60-65]. Crucially, these platelet biomarkers are thought to reflect the changes in A β PP processing seen in the AD brain that, combined with a reduced ability to clear A β peptides, may be a causative factor of AD [8, 66].

THE EFFICACY OF SSRI'S IN THE TREATMENT OF DEPRESSION IN AD

Antipsychotics, acetylcholinesterase inhibitors, anti-convulsant and hormone-replacement therapy are all typical treatments that are commonly prescribed to alleviate depression in AD. However many of these drugs have been found to be inadequate [67] in treating depression in AD and as a result SSRI's are more widely prescribed. SSRI's are often associated with a reduced risk of an adverse event [68, 69], and are therefore considered safer.

SSRI's target the serotonin receptor transporters (SERT), preventing serotonin re-uptake from the synapse and therefore, increase signalling and ligand-receptor binding. Initially, SSRI's were assumed to possess therapeutic effects based on the 'monoamine hypothesis' of depression which postulates that defective neurotransmitter signalling is a central feature [70]. However, multiple downstream effects have been suggested. Elevated neuro-inflammation has been described as a prominent feature of both AD and depression. Treatment with SSRI's has been shown to reduce circulating cytokines and interact with inflammatory signalling pathways that are typically elevated in chronic inflammatory conditions [71]. In addition to inflammation, hyperactivation of the hypothalamic-pituitary axis and lowered neurotrophin production are key neurobiological links between depression

and AD that may be modulated by SSRI's [72]. Thus, plausible mechanisms of action for SSRI's do exist in both depression and AD and in the interaction of these conditions.

The identification of potential mechanisms of action for SSRI's fitted well with the outcomes of early research studies, which suggested that SSRI's could improve depressive symptoms in people with AD when compared to treatment with placebo [4, 73, 74]. However, these studies were significantly underpowered and the need for larger trials, to prove efficacy of SSRI treatment for depression in AD, was identified. More recently, larger studies have shown that SSRI's were no better than placebo for the treatment of depressive symptoms in people with AD [75, 76]. Several randomised control trials [77-80] have also suggested that SSRI's lack the required efficacy for treating depressive symptoms in people with AD and this was supported in a recent meta-analysis [81]. However, the lack of effect may partly be due to our inability to predict individual response to treatment and provide personalised optimal dosage strategies [36]. It has also been shown that the placebo effects in older age adult populations are much larger than in younger cohorts and it may be more appropriate to offer psychotherapies before prescribing SSRI's as a last resort [82]. In addition, although SSRI's can have delayed effects in older populations, long term use of SSRI's was not associated with alleviated symptoms of depression in people with AD [83]. However, the prescription of SSRI's for the treatment of late-life depression in older age adults without AD (or other dementias) is largely successful [84], as up to 70% of people will recover [85]. That said, older age adult populations tend to show a poorer response to SSRI's compared to younger people. In studies comparing old and young, up to 50% of older age adults can be treatment resistant [86, 87].

There is an urgent need to understand why people with AD and depression appear not to respond to treatment. With advancing age, an individual is likely to experience (cognitive and physical) functional decline, which can diminish quality of life. As these changes can

occur at a rapid rate, they will no doubt place a psychological burden on the individual and increase the likelihood of recurring depressive episodes [86]. In addition, the neurodegeneration [88] and global physiological changes associated with advancing AD, such as increased inflammation and oxidative stress [89], are likely to enhance the severity of depressive episodes. This may lead to significant cognitive impairment and reduce the likelihood of both treatment response and adherence to medication [90, 91]. In fact, people with late-life depression and AD, or both, are known to have significantly lower treatment adherence rates possibly linked to reduced cognitive functioning and a greater number of comorbidities [92, 93]. Although adherence to SSRI's in people with AD is greater than adherence to Tricyclic antidepressants, over 50% of people with AD discontinue all antidepressant medication within 6 months [94]. This is most often due to a general lack of ability to maintain routine, related to reduced cognitive function. Poor adherence to medication can also increase the severity of comorbidities in AD, lead to a greater risk of adverse events and often a lower quality of life [95].

In over 30% of late-life depression cases, cognitive deficiencies are present independent of AD pathology. This cognitive impairment is thought to be reversible with the successful treatment of depression [96]. However, for those who do not recover from depressive episodes with treatment, the possibility of such symptoms reflecting a prodromal period of AD development cannot be ruled out [97]. In support of this view it has been shown that older individuals that respond poorest to antidepressant treatment have a greater brain A β load and lower cognitive function [98]. This suggests that either, A β deposition, poorer cognitive function or greater neurodegeneration reduce the therapeutic action of antidepressant treatment or more likely, that the individual's depression-related symptoms are reflecting a prodromal AD state and therefore typical treatment options for depression are unsuitable. In order to determine this, robust biomarkers that predict the onset of AD are

ALZHEIMER'S DISEASE, DEPRESSION AND SSRI'S

required, to avoid unnecessary prescription of SSRI's to older adults that are actually not depressed but that are developing symptomatic AD.

THE EFFICACY OF SSRI'S IN THE TREATMENT OF AD

The possibility of late-life depression reflecting a prodromal period of AD is supported by several key observations: Both depression and AD share similar neurobiological and peripheral biochemical changes that reflect a disease state, for example elevated inflammatory and oxidative stress markers and increased cerebrovascular damage or degeneration [42, 99, 100] are common in depression and AD. Depression and AD may be linked bi-directionally as depression is a risk factor for AD and AD is a risk factor for depression. Alterations in brain A β accumulation are often seen in people with a life-time history of depression [101]. Although SSRI treatment may not always be efficacious for alleviating depressive symptoms in AD, interest in the effectiveness of SSRI's for treatment of cognitive decline has been gaining attention. Current research suggests that long-term treatment with SSRI's may delay the progression from MCI to AD [102, 103]. In fact SSRI treatment has been associated with a reduced mortality rate at two-year follow up, although this effect dissipates after four years [104]. However, those receiving long term treatment may have had an earlier onset of depression-related symptoms. Those who only receive SSRI treatment later in life may instead have depressive symptoms reflecting an early manifestation of AD and therefore, are more likely to develop to clinically significant AD. This raises an important consideration. Effective treatment of major depression with SSRI's can induce neurogenesis and reverse hippocampal atrophy [105, 106]. However, once the clinical symptoms of AD become apparent the associated neurodegeneration is irreversible. Therefore, the treatment of AD with SSRI's is not curative or necessarily able restore a loss of function, but may delay the disease process and crucially, prolong cognitive function into

ALZHEIMER'S DISEASE, DEPRESSION AND SSRI'S

older age. In order to achieve this therapeutic effect, SSRI's must act through mechanisms that interfere with aberrant pathological processes seen in people with AD and there is emerging evidence to support this effect.

One mechanism that may contribute to this effect may be a regulation of A β -accumulation, however neither A β PP- β or cerebral spinal fluid A β 42 levels changed in response to SSRI's in these studies. It is possible that SSRI treatment had a positive effect on the α -cleavage of APP via ADAM10, which would lead to production of the neuroprotective soluble A β PP- α . Interestingly, platelet ADAM10 expression can increase with use of SSRI's in people with AD [107]. If this effect is confirmed and is mirrored in the brain, then SSRI use in AD could have implications for the progression of neurodegeneration seen in AD. If the accumulation of A β could be slowed by SSRI's increasing the non-amyloidogenic cleavage of A β PP then further A β accumulation could be prevented.

Further to this, reduced neuroinflammation and elevated brain-derived neurotrophic factor are all potential mechanisms by which SSRI treatment may contribute to the delayed progression of AD [103]. AD is a multifactorial disease. Both increased oxidative stress and a chronic low-grade inflammation are associated with AD [108, 109]. Neuroinflammation has been implicated in the progression of AD by increasing amyloidogenic processing of APP, resulting in elevated A β and increasing the susceptibility of cells to neurodegenerative processes [110]. SSRI's can reduce peripheral inflammatory markers such as Interleukin-6, C-reactive protein and Tumour necrosis factor- α and prevent microglia activation in the brain [111]. This is of particular relevance to AD as the blood brain barrier is more susceptible to leakage of cytokines into the brain. In addition, the anti-inflammatory effect of SSRI's is reflected in the brain by preventing elevated serotonin reuptake from the synapse as a result of elevated cytokine signalling or, by direct action on reducing cytokine production [112, 113]. This highlights a possible therapeutic mechanism of action in slowing the global

ALZHEIMER'S DISEASE, DEPRESSION AND SSRI'S

inflammatory response seen as a result of AD progression [114]. Further, SSRI's may also be effective in lowering oxidative stress. This may be due to either increased endogenous antioxidant capacity or activity, or through possible antioxidant properties of the drugs itself suggesting alternative protective action [115, 116]. Higher levels of the oxidative stress marker F2-Isoprostane at baseline have also been associated with a poorer treatment response for depression [100, 117]. All the current research assessing the ability of SSRI's to alter inflammation and oxidative stress has been conducted in animal models or in participants with depression alone, and therefore, given the potential interactions in pathologies between depression and AD, studies are needed to explore the effects of SSRI's in people with depression and AD.

As SSRI's may alter the processing of A β PP, and therefore the generation of A β , they are a potential candidate treatment to delay the progression of AD. Elevated serotonin signalling has been associated with decreased interstitial fluid A β peptide and A β plaque load [118]. In addition, SSRI use over a 5-year period has been associated with lower Pittsburgh compound-b A β load in cognitively healthy participants using SSRI's [118, 119]. SSRI's have also been shown to modulate the A β peptide species generated and therefore can reduce the toxicity associated with oligomeric forms of A β [120]. This may also have downstream benefits on tau-hyperphosphorylation by minimising the potential for A β -tau cross talk [121]. SSRI's may also help by reducing synergistic toxic effects of A β and hyperphosphorylated tau and the associated synaptic and neuronal dysfunction seen in people with AD [121, 122]. In fact, this effect has been demonstrated in primary rodent neurons [123].

Some of the possible mechanisms by which SSRI's could alter the processing of A β PP are via altered A β PP expression or increased trafficking of A β PP to the cellular membrane, increased ADAM10 activity and/or reduced BACE-1 activity. The majority of work to explore these mechanisms has taken place *in vitro* or in animal models, nevertheless A β PP- α

ALZHEIMER'S DISEASE, DEPRESSION AND SSRI'S

increased 3.4-fold after treatment with Citalopram, a commonly used SSRI, which precludes the formation of A β [124]. This data is supported by the finding that agonists of the serotonin receptor lowered A β in brain interstitial fluid but had no effect on gene expression, suggesting that A β PP processing is altered at protein level in the cell cytoplasm, with ADAM10 being the most likely candidate for upregulation. In support of this, broad pharmacological inhibition of α -secretases prevented the action of Citalopram and led to increased A β in brain interstitial fluid [125]. Elevated expression of ADAM10 has also been shown in response to Fluoxetine administration in a triple-transgenic mouse model of AD. This alteration in enzyme activity was further supported by an increase in sA β PP- α and C83 protein fragments. The effects of Fluoxetine were ascribed to maintaining or rescuing Wnt/ β -catenin signalling pathways through the phosphorylation of GSK3 β and direct action on β -catenin expression, which are thought to be altered in AD [126]. The therapeutic effects of Fluoxetine on preventing neuron degeneration, synapse dysfunction and for attenuating memory loss have also been well documented in mice [127, 128]. Increased platelet ADAM10 expression has also been reported in participants with AD who were taking various SSRI medication [107] and this may be mediated by alterations in tetraspanin-5, which is known to alter the trafficking of ADAM10 in platelets [129].

Together, there is a strong case warranting further research into the use of SSRI medication as a treatment option to delay the progression of AD, targeting multiple mechanisms of action (*see figure 1*).

CONCLUSION

Unfortunately the effectiveness of SSRI treatment seems to become less obvious as AD progresses [77, 130, 131], yet the minimal side effects seen with SSRI use might make this a suitable option for slowing cognitive decline. The lack of benefit seen from SSRI

ALZHEIMER'S DISEASE, DEPRESSION AND SSRI'S

treatment of symptoms of late-life depression, especially in people with AD, suggests that current recommendations for SSRI prescription need to be reviewed. A crucial step towards more effective treatment of AD is to identify accessible biomarkers of AD pathology in order to be able to properly monitor depressive symptoms that manifest as a characteristic of AD, rather than depression. Although both conditions share overlap in neuroanatomical features related to emotional regulation and cognitive function, asymmetric degeneration in AD may be one such way of distinguishing depression as a result of AD and comorbid late-life depression. In addition, the potential for SSRI's to promote non-amyloidogenic processing of A β PP suggest an alternative role for SSRI's in AD treatment. Research focusing on the mechanisms of action of SSRI's for both depression in AD and for AD alone are much needed and may provide an alternative approach for delaying the progression of AD. Platelets provide an easily accessible, cost-effective sample to assess A β PP processing. Further research into the effects of SSRI use for depression in AD and AD alone in platelets is warranted.

ACKNOWLEDGEMENTS

The authors have no acknowledgments to include.

CONFLICT OF INTEREST

The authors have no conflict of interest to report.

REFERENCES

- [1] Kontis V, Bennett JE, Mathers CD, Li G, Foreman K, Ezzati M (2017) Future life expectancy in 35 industrialised countries: projections with a Bayesian model ensemble. *Lancet* **389**, 1323-1335.
- [2] Lewis FI, Torgerson PR (2017) The current and future burden of late-onset dementia in the United Kingdom: Estimates and interventions. *Alzheimers Dement* **13**, 38-44.
- [3] Rizzi L, Rosset I, Roriz-Cruz M (2014) Global epidemiology of dementia: Alzheimer's and vascular types. *Biomed Res Int* **2014**, 908915.
- [4] Hyman BT, Phelps CH, Beach TG, Bigio EH, Cairns NJ, Carrillo MC, Dickson DW, Duyckaerts C, Frosch MP, Masliah E, Mirra SS, Nelson PT, Schneider JA, Thal DR, Thies B, Trojanowski JQ, Vinters HV, Montine TJ (2012) National Institute on Aging-Alzheimer's Association guidelines for the neuropathologic assessment of Alzheimer's disease. *Alzheimers Dement* **8**, 1-13.
- [5] Villemagne VL, Burnham S, Bourgeat P, Brown B, Ellis KA, Salvado O, Szoek C, Macaulay SL, Martins R, Maruff P, Ames D, Rowe CC, Masters CL, Group AIBaLAR (2013) Amyloid β deposition, neurodegeneration, and cognitive decline in sporadic Alzheimer's disease: a prospective cohort study. *Lancet Neurol* **12**, 357-367.
- [6] Reddy PH, Mani G, Park BS, Jacques J, Murdoch G, Whetsell W, Kaye J, Manczak M (2005) Differential loss of synaptic proteins in Alzheimer's disease: implications for synaptic dysfunction. *J Alzheimers Dis* **7**, 103-117; discussion 173-180.
- [7] Scheff SW, Price DA, Ansari MA, Roberts KN, Schmitt FA, Ikonovic MD, Mufson EJ (2015) Synaptic change in the posterior cingulate gyrus in the progression of Alzheimer's disease. *J Alzheimers Dis* **43**, 1073-1090.
- [8] Selkoe DJ, Hardy J (2016) The amyloid hypothesis of Alzheimer's disease at 25 years. *EMBO Mol Med* **8**, 595-608.
- [9] Butterfield DA (2018) Perspectives on Oxidative Stress in Alzheimer's Disease and Predictions of Future Research Emphases. *J Alzheimers Dis* **64**, S469-S479.
- [10] Shadfar S, Hwang CJ, Lim MS, Choi DY, Hong JT (2015) Involvement of inflammation in Alzheimer's disease pathogenesis and therapeutic potential of anti-inflammatory agents. *Arch Pharm Res* **38**, 2106-2119.
- [11] Starkstein SE, Jorge R, Mizrahi R, Robinson RG (2006) A prospective longitudinal study of apathy in Alzheimer's disease. *J Neurol Neurosurg Psychiatry* **77**, 8-11.
- [12] Brodaty H, Connors MH, Xu J, Woodward M, Ames D, group Ps (2015) The course of neuropsychiatric symptoms in dementia: a 3-year longitudinal study. *J Am Med Dir Assoc* **16**, 380-387.
- [13] Zhao QF, Tan L, Wang HF, Jiang T, Tan MS, Xu W, Li JQ, Wang J, Lai TJ, Yu JT (2016) The prevalence of neuropsychiatric symptoms in Alzheimer's disease: Systematic review and meta-analysis. *J Affect Disord* **190**, 264-271.
- [14] Levy ML, Cummings JL, Fairbanks LA, Masterman D, Miller BL, Craig AH, Paulsen JS, Litvan I (1998) Apathy is not depression. *J Neuropsychiatry Clin Neurosci* **10**, 314-319.
- [15] Vloeberghs R, Opmeer EM, De Deyn PP, Engelborghs S, De Roeck EE (2018) [Apathy, depression and cognitive functioning in patients with MCI and dementia]. *Tijdschr Gerontol Geriatr* **49**, 95-102.
- [16] Ruthirakuhan MT, Herrmann N, Abraham EH, Chan S, Lanctôt KL (2018) Pharmacological interventions for apathy in Alzheimer's disease. *Cochrane Database Syst Rev* **5**, CD012197.

- [17] Sepehry AA, Sarai M, Hsiung GR (2017) Pharmacological Therapy for Apathy in Alzheimer's Disease: A Systematic Review and Meta-Analysis. *Can J Neurol Sci* **44**, 267-275.
- [18] Yuen GS, Bhutani S, Lucas BJ, Gunning FM, AbdelMalak B, Seirup JK, Klimstra SA, Alexopoulos GS (2015) Apathy in late-life depression: common, persistent, and disabling. *American Journal of Geriatric Psychiatry* **23**, 488-494.
- [19] Enache D, Winblad B, Aarsland D (2011) Depression in dementia: epidemiology, mechanisms, and treatment. *Curr Opin Psychiatry* **24**, 461-472.
- [20] Snowden MB, Atkins DC, Steinman LE, Bell JF, Bryant LL, Copeland C, Fitzpatrick AL (2015) Longitudinal Association of Dementia and Depression. *Am J Geriatr Psychiatry* **23**, 897-905.
- [21] Feldman H, Scheltens P, Scarpini E, Hermann N, Mesenbrink P, Mancione L, Tekin S, Lane R, Ferris S (2004) Behavioral symptoms in mild cognitive impairment. *Neurology* **62**, 1199-1201.
- [22] Lee CH, Kim DH, Moon YS (2019) Differential associations between depression and cognitive function in MCI and AD: a cross-sectional study. *Int Psychogeriatr*, 1-8.
- [23] Gracia-García P, de-la-Cámara C, Santabárbara J, Lopez-Anton R, Quintanilla MA, Ventura T, Marcos G, Campayo A, Saz P, Lyketsos C, Lobo A (2015) Depression and incident Alzheimer disease: the impact of disease severity. *Am J Geriatr Psychiatry* **23**, 119-129.
- [24] Dotson VM, Beydoun MA, Zonderman AB (2010) Recurrent depressive symptoms and the incidence of dementia and mild cognitive impairment. *Neurology* **75**, 27-34.
- [25] Barnes DE, Yaffe K, Byers AL, McCormick M, Schaefer C, Whitmer RA (2012) Midlife vs late-life depressive symptoms and risk of dementia: differential effects for Alzheimer disease and vascular dementia. *Arch Gen Psychiatry* **69**, 493-498.
- [26] Brendel M, Pogarell O, Xiong G, Delker A, Bartenstein P, Rominger A, Initiative AsDN (2015) Depressive symptoms accelerate cognitive decline in amyloid-positive MCI patients. *Eur J Nucl Med Mol Imaging* **42**, 716-724.
- [27] Lee GJ, Lu PH, Hua X, Lee S, Wu S, Nguyen K, Teng E, Leow AD, Jack CR, Toga AW, Weiner MW, Bartzokis G, Thompson PM, Initiative AsDN (2012) Depressive symptoms in mild cognitive impairment predict greater atrophy in Alzheimer's disease-related regions. *Biol Psychiatry* **71**, 814-821.
- [28] Gallagher D, Kiss A, Lanctot K, Herrmann N (2018) *The American Journal of Geriatric Psychiatry*.
- [29] Spalletta G, Caltagirone C, Girardi P, Gianni W, Casini AR, Palmer K (2012) The role of persistent and incident major depression on rate of cognitive deterioration in newly diagnosed Alzheimer's disease patients. *Psychiatry Res* **198**, 263-268.
- [30] Firbank M, Kobeleva X, Cherry G, Killen A, Gallagher P, Burn DJ, Thomas AJ, O'Brien JT, Taylor JP (2016) Neural correlates of attention-executive dysfunction in lewy body dementia and Alzheimer's disease. *Hum Brain Mapp* **37**, 1254-1270.
- [31] Alexopoulos GS, Kiosses DN, Klimstra S, Kalayam B, Bruce ML (2002) Clinical presentation of the "depression-executive dysfunction syndrome" of late life. *Am J Geriatr Psychiatry* **10**, 98-106.
- [32] Morimoto SS, Kanellopoulos D, Manning KJ, Alexopoulos GS (2015) Diagnosis and Treatment of Depression and Cognitive Impairment in Late-Life. *Annals of the New York Academy of Sciences* **1345**, 36-46.
- [33] Gaugler JE, Hovater M, Roth DL, Johnston JA, Kane RL, Sarsour K (2014) Depressive, functional status, and neuropsychiatric symptom trajectories before an Alzheimer's disease diagnosis. *Aging Ment Health* **18**, 110-116.

- [34] Schatzberg A, Roose S (2006) A double-blind, placebo-controlled study of venlafaxine and fluoxetine in geriatric outpatients with major depression. *Am J Geriatr Psychiatry* **14**, 361-370.
- [35] Raskin J, Wiltse CG, Siegal A, Sheikh J, Xu J, Dinkel JJ, Rotz BT, Mohs RC (2007) Efficacy of duloxetine on cognition, depression, and pain in elderly patients with major depressive disorder: an 8-week, double-blind, placebo-controlled trial. *Am J Psychiatry* **164**, 900-909.
- [36] Sepehry AA, Lee PE, Hsiung GY, Jacova C (2012) Stay the course--is it justified? *Lancet* **379**, 220.
- [37] Sepehry AA, Lee PE, Hsiung GR, Beattie BL, Feldman HH, Jacova C (2017) The 2002 NIMH Provisional Diagnostic Criteria for Depression of Alzheimer's Disease (PDC-dAD): Gauging their Validity over a Decade Later. *J Alzheimers Dis* **58**, 449-462.
- [38] Kaup AR, Byers AL, Falvey C, Simonsick EM, Satterfield S, Ayonayon HN, Smagula SF, Rubin SM, Yaffe K (2016) Trajectories of Depressive Symptoms in Older Adults and Risk of Dementia. *JAMA Psychiatry* **73**, 525-531.
- [39] Chi S, Yu JT, Tan MS, Tan L (2014) Depression in Alzheimer's disease: epidemiology, mechanisms, and management. *J Alzheimers Dis* **42**, 739-755.
- [40] Kim HK, Nunes PV, Oliveira KC, Young LT, Lafer B (2016) Neuropathological relationship between major depression and dementia: A hypothetical model and review. *Prog Neuropsychopharmacol Biol Psychiatry* **67**, 51-57.
- [41] Boccia M, Acierno M, Piccardi L (2015) Neuroanatomy of Alzheimer's Disease and Late-Life Depression: A Coordinate-Based Meta-Analysis of MRI Studies. *J Alzheimers Dis* **46**, 963-970.
- [42] Wu KY, Hsiao IT, Chen CS, Chen CH, Hsieh CJ, Wai YY, Chang CJ, Tseng HJ, Yen TC, Liu CY, Lin KJ (2014) Increased brain amyloid deposition in patients with a lifetime history of major depression: evidenced on 18F-florbetapir (AV-45/Amyvid) positron emission tomography. *Eur J Nucl Med Mol Imaging* **41**, 714-722.
- [43] Harrington KD, Lim YY, Gould E, Maruff P (2015) Amyloid-beta and depression in healthy older adults: a systematic review. *Aust N Z J Psychiatry* **49**, 36-46.
- [44] Rapp MA, Schnaider-Beeri M, Grossman HT, Sano M, Perl DP, Purohit DP, Gorman JM, Haroutunian V (2006) Increased hippocampal plaques and tangles in patients with Alzheimer disease with a lifetime history of major depression. *Arch Gen Psychiatry* **63**, 161-167.
- [45] Direk N, Schrijvers EM, de Bruijn RF, Mirza S, Hofman A, Ikram MA, Tiemeier H (2013) Plasma amyloid β , depression, and dementia in community-dwelling elderly. *J Psychiatr Res* **47**, 479-485.
- [46] Sun X, Chiu CC, Liebson E, Crivello NA, Wang L, Claunch J, Folstein M, Rosenberg I, Mwamburi DM, Peter I, Qiu WQ (2009) Depression and plasma amyloid beta peptides in the elderly with and without the apolipoprotein E4 allele. *Alzheimer Dis Assoc Disord* **23**, 238-244.
- [47] Jin S, Kedia N, Illes-Toth E, Haralampiev I, Prisner S, Herrmann A, Wanker EE, Bieschke J (2016) Amyloid- β (1-42) Aggregation Initiates Its Cellular Uptake and Cytotoxicity. *J Biol Chem* **291**, 19590-19606.
- [48] Blasko I, Kemmler G, Jungwirth S, Wichart I, Krampla W, Weissgram S, Jellinger K, Tragl KH, Fischer P (2010) Plasma amyloid beta-42 independently predicts both late-onset depression and Alzheimer disease. *Am J Geriatr Psychiatry* **18**, 973-982.
- [49] van der Lee SJ, Wolters FJ, Ikram MK, Hofman A, Ikram MA, Amin N, van Duijn CM (2018) The effect of APOE and other common genetic variants on the onset of

- Alzheimer's disease and dementia: a community-based cohort study. *Lancet Neurol* **17**, 434-444.
- [50] O'Donoghue MC, Murphy SE, Zamboni G, Nobre AC, Mackay CE (2018) APOE genotype and cognition in healthy individuals at risk of Alzheimer's disease: A review. *Cortex* **104**, 103-123.
- [51] Pletnikova O, Kageyama Y, Rudow G, LaClair KD, Albert M, Crain BJ, Tian J, Fowler D, Troncoso JC (2018) The spectrum of preclinical Alzheimer's disease pathology and its modulation by ApoE genotype. *Neurobiol Aging* **71**, 72-80.
- [52] Metti AL, Cauley JA, Newman AB, Ayonayon HN, Barry LC, Kuller LM, Satterfield S, Simonsick EM, Yaffe K (2013) Plasma beta amyloid level and depression in older adults. *J Gerontol A Biol Sci Med Sci* **68**, 74-79.
- [53] Chow VW, Mattson MP, Wong PC, Gleichmann M (2010) An overview of APP processing enzymes and products. *Neuromolecular Med* **12**, 1-12.
- [54] O'Brien RJ, Wong PC (2011) Amyloid precursor protein processing and Alzheimer's disease. *Annu Rev Neurosci* **34**, 185-204.
- [55] Kuhn PH, Wang H, Dislich B, Colombo A, Zeitschel U, Ellwart JW, Kremmer E, Rossner S, Lichtenthaler SF (2010) ADAM10 is the physiologically relevant, constitutive alpha-secretase of the amyloid precursor protein in primary neurons. *EMBO J* **29**, 3020-3032.
- [56] Postina R, Schroeder A, Dewachter I, Bohl J, Schmitt U, Kojro E, Prinzen C, Endres K, Hiemke C, Blessing M, Flamez P, Dequenue A, Godaux E, van Leuven F, Fahrenholz F (2004) A disintegrin-metalloproteinase prevents amyloid plaque formation and hippocampal defects in an Alzheimer disease mouse model. *J Clin Invest* **113**, 1456-1464.
- [57] Cole SL, Vassar R (2007) The Alzheimer's disease beta-secretase enzyme, BACE1. *Mol Neurodegener* **2**, 22.
- [58] Casoli T, Di Stefano G, Baliotti M, Solazzi M, Giorgetti B, Fattoretti P (2010) Peripheral inflammatory biomarkers of Alzheimer's disease: the role of platelets. *Biogerontology* **11**, 627-633.
- [59] Catricala S, Torti M, Ricevuti G (2012) Alzheimer disease and platelets: how's that relevant. *Immun Ageing* **9**, 20.
- [60] Manzine PR, Barham EJ, Vale FeA, Selistre-de-Araújo HS, Iost Pavarini SC, Cominetti MR (2013) Correlation between mini-mental state examination and platelet ADAM10 expression in Alzheimer's disease. *J Alzheimers Dis* **36**, 253-260.
- [61] Manzine PR, Barham EJ, Vale FA, Selistre-de-Araújo HS, Pavarini SC, Cominetti MR (2014) Platelet a disintegrin and metalloproteinase 10 expression correlates with clock drawing test scores in Alzheimer's disease. *Int J Geriatr Psychiatry* **29**, 414-420.
- [62] Colciaghi F, Marcello E, Borroni B, Zimmermann M, Caltagirone C, Cattabeni F, Padovani A, Di Luca M (2004) Platelet APP, ADAM 10 and BACE alterations in the early stages of Alzheimer disease. *Neurology* **62**, 498-501.
- [63] Schuck F, Wolf D, Fellgiebel A, Endres K (2016) Increase of α -Secretase ADAM10 in Platelets Along Cognitively Healthy Aging. *J Alzheimers Dis* **50**, 817-826.
- [64] Decourt B, Walker A, Gonzales A, Malek-Ahmadi M, Liesback C, Davis KJ, Belden CM, Jacobson SA, Sabbagh MN (2013) Can platelet BACE1 levels be used as a biomarker for Alzheimer's disease? Proof-of-concept study. *Platelets* **24**, 235-238.
- [65] Bram JMF, Talib LL, Joaquim HPG, Sarno TA, Gattaz WF, Forlenza OV (2018) Protein levels of ADAM10, BACE1, and PSEN1 in platelets and leukocytes of Alzheimer's disease patients. *Eur Arch Psychiatry Clin Neurosci*.
- [66] Zhang YW, Thompson R, Zhang H, Xu H (2011) APP processing in Alzheimer's disease. *Mol Brain* **4**, 3.

- [67] Lozupone M, La Montagna M, D'Urso F, Piccininni C, Sardone R, Dibello V, Giannelli G, Solfrizzi V, Greco A, Daniele A, Quaranta N, Seripa D, Bellomo A, Logroscino G, Panza F (2018) Pharmacotherapy for the treatment of depression in patients with alzheimer's disease: a treatment-resistant depressive disorder. *Expert Opin Pharmacother* **19**, 823-842.
- [68] Martinez C, Jones RW, Rietbrock S (2013) Trends in the prevalence of antipsychotic drug use among patients with Alzheimer's disease and other dementias including those treated with antidementia drugs in the community in the UK: a cohort study. *BMJ Open* **3**.
- [69] Wilkins JM, Forester BP (2016) Update on SSRI Treatment for Neuropsychiatric Symptoms of Dementia. *Curr Psychiatry Rep* **18**, 14.
- [70] Haase J, Brown E (2015) Integrating the monoamine, neurotrophin and cytokine hypotheses of depression--a central role for the serotonin transporter? *Pharmacol Ther* **147**, 1-11.
- [71] Walker FR (2013) A critical review of the mechanism of action for the selective serotonin reuptake inhibitors: do these drugs possess anti-inflammatory properties and how relevant is this in the treatment of depression? *Neuropharmacology* **67**, 304-317.
- [72] Caraci F, Copani A, Nicoletti F, Drago F (2010) Depression and Alzheimer's disease: neurobiological links and common pharmacological targets. *Eur J Pharmacol* **626**, 64-71.
- [73] Rao V, Spiro JR, Rosenberg PB, Lee HB, Rosenblatt A, Lyketsos CG (2006) An open-label study of escitalopram (Lexapro) for the treatment of 'Depression of Alzheimer's disease' (dAD). *Int J Geriatr Psychiatry* **21**, 273-274.
- [74] Nelson JC, Devanand DP (2011) A systematic review and meta-analysis of placebo-controlled antidepressant studies in people with depression and dementia. *J Am Geriatr Soc* **59**, 577-585.
- [75] Sepehry AA, Lee PE, Hsiung GY, Beattie BL, Jacova C (2012) Effect of selective serotonin reuptake inhibitors in Alzheimer's disease with comorbid depression: a meta-analysis of depression and cognitive outcomes. *Drugs Aging* **29**, 793-806.
- [76] An H, Choi B, Park KW, Kim DH, Yang DW, Hong CH, Kim SY, Han SH (2017) The Effect of Escitalopram on Mood and Cognition in Depressive Alzheimer's Disease Subjects. *J Alzheimers Dis* **55**, 727-735.
- [77] Choe YM, Kim KW, Jhoo JH, Ryu SH, Seo EH, Sohn BK, Byun MS, Bak JH, Lee JM, Yun HJ, Han MI, Woo JI, Lee DY (2016) Multicenter, randomized, placebo-controlled, double-blind clinical trial of escitalopram on the progression-delaying effects in Alzheimer's disease. *Int J Geriatr Psychiatry* **31**, 731-739.
- [78] Rosenberg PB, Drye LT, Martin BK, Frangakis C, Mintzer JE, Weintraub D, Porsteinsson AP, Schneider LS, Rabins PV, Munro CA, Meinert CL, Lyketsos CG, Group D-R (2010) Sertraline for the treatment of depression in Alzheimer disease. *Am J Geriatr Psychiatry* **18**, 136-145.
- [79] Roose SP, Sackeim HA, Krishnan KR, Pollock BG, Alexopoulos G, Lavretsky H, Katz IR, Hakkarainen H, Group O-ODS (2004) Antidepressant pharmacotherapy in the treatment of depression in the very old: a randomized, placebo-controlled trial. *Am J Psychiatry* **161**, 2050-2059.
- [80] Banerjee S, Hellier J, Dewey M, Romeo R, Ballard C, Baldwin R, Bentham P, Fox C, Holmes C, Katona C, Knapp M, Lawton C, Lindesay J, Livingston G, McCrae N, Moniz-Cook E, Murray J, Nurock S, Orrell M, O'Brien J, Poppe M, Thomas A, Walwyn R, Wilson K, Burns A (2011) Sertraline or mirtazapine for depression in dementia (HTA-SADD): a randomised, multicentre, double-blind, placebo-controlled trial. *Lancet* **378**, 403-411.

- [81] Orgeta V, Tabet N, Nilforooshan R, Howard R (2017) Efficacy of Antidepressants for Depression in Alzheimer's Disease: Systematic Review and Meta-Analysis. *J Alzheimers Dis* **58**, 725-733.
- [82] Locher C, Kossowsky J, Gaab J, Kirsch I, Bain P, Krummenacher P (2015) Moderation of antidepressant and placebo outcomes by baseline severity in late-life depression: A systematic review and meta-analysis. *J Affect Disord* **181**, 50-60.
- [83] Wang C, Gao S, Hendrie HC, Kesterson J, Campbell NL, Shekhar A, Callahan CM (2016) Antidepressant Use in the Elderly Is Associated With an Increased Risk of Dementia. *Alzheimer Dis Assoc Disord* **30**, 99-104.
- [84] Nelson JC, Delucchi K, Schneider LS (2008) Efficacy of second generation antidepressants in late-life depression: a meta-analysis of the evidence. *Am J Geriatr Psychiatry* **16**, 558-567.
- [85] Bottino CM, Barcelos-Ferreira R, Ribeiz SR (2012) Treatment of depression in older adults. *Curr Psychiatry Rep* **14**, 289-297.
- [86] Knöchel C, Alves G, Friedrichs B, Schneider B, Schmidt-Rechau A, Wenzler S, Schneider A, Prvulovic D, Carvalho AF, Oertel-Knöchel V (2015) Treatment-resistant Late-life Depression: Challenges and Perspectives. *Curr Neuropharmacol* **13**, 577-591.
- [87] Beyer JL, Johnson KG (2018) Advances in Pharmacotherapy of Late-Life Depression. *Curr Psychiatry Rep* **20**, 34.
- [88] Bahia VS, Cecchini MA, Cassimiro L, Viana R, Lima-Silva TB, de Souza LC, Carvalho VA, Guimarães HC, Caramelli P, Balthazar MLF, Damasceno B, Brucki SMD, Nitrini R, Yassuda MS (2018) The Accuracy of INECO Frontal Screening in the Diagnosis of Executive Dysfunction in Frontotemporal Dementia and Alzheimer Disease. *Alzheimer Dis Assoc Disord*.
- [89] Leonard BE (2017) Major Depression as a Neuroprogressive Prelude to Dementia: What Is the Evidence? *Mod Trends Pharmacopsychiatry* **31**, 56-66.
- [90] Brown GM, McIntyre RS, Rosenblat J, Hardeland R (2018) Depressive disorders: Processes leading to neurodegeneration and potential novel treatments. *Prog Neuropsychopharmacol Biol Psychiatry* **80**, 189-204.
- [91] Tunvirachaisakul C, Gould RL, Coulson MC, Ward EV, Reynolds G, Gathercole RL, Grocott H, Supasitthumrong T, Tunvirachaisakul A, Kimona K, Howard RJ (2018) Predictors of treatment outcome in depression in later life: A systematic review and meta-analysis. *J Affect Disord* **227**, 164-182.
- [92] Hall CA, Reynolds-III CF (2014) Late-life depression in the primary care setting: challenges, collaborative care, and prevention. *Maturitas* **79**, 147-152.
- [93] Mizokami F, Mase H, Kinoshita T, Kumagai T, Furuta K, Ito K (2016) Adherence to Medication Regimens is an Effective Indicator of Cognitive Dysfunction in Elderly Individuals. *Am J Alzheimers Dis Other Demen* **31**, 132-136.
- [94] Booker A, Bohlken J, Rapp MA, Kostev K (2016) Persistence with antidepressant drugs in patients with dementia: a retrospective database analysis. *Int J Clin Pharmacol Ther* **54**, 323-329.
- [95] Maxwell CJ, Stock K, Seitz D, Herrmann N (2014) Persistence and adherence with dementia pharmacotherapy: relevance of patient, provider, and system factors. *Can J Psychiatry* **59**, 624-631.
- [96] Morimoto SS, Kanellopoulos D, Manning KJ, Alexopoulos GS (2015) Diagnosis and treatment of depression and cognitive impairment in late life. *Ann N Y Acad Sci* **1345**, 36-46.
- [97] Gasser AI, Salamin V, Zumbach S (2018) [Late life depression or prodromal Alzheimer's disease: Which tools for the differential diagnosis?]. *Encephale* **44**, 52-58.

- [98] Li P, Hsiao IT, Liu CY, Chen CH, Huang SY, Yen TC, Wu KY, Lin KJ (2017) Beta-amyloid deposition in patients with major depressive disorder with differing levels of treatment resistance: a pilot study. *EJNMMI Res* **7**, 24.
- [99] Scott R, Paulson D (2018) Cerebrovascular burden and depressive symptomatology interrelate over 18 years: support for the vascular depression hypothesis. *Int J Geriatr Psychiatry* **33**, 66-74.
- [100] Lindqvist D, Dhabhar FS, James SJ, Hough CM, Jain FA, Bersani FS, Reus VI, Verhoeven JE, Epel ES, Mahan L, Rosser R, Wolkowitz OM, Mellon SH (2017) Oxidative stress, inflammation and treatment response in major depression. *Psychoneuroendocrinology* **76**, 197-205.
- [101] Mahgoub N, Alexopoulos GS (2016) Amyloid Hypothesis: Is There a Role for Anti-amyloid Treatment in Late-Life Depression? *Am J Geriatr Psychiatry* **24**, 239-247.
- [102] Pelton GH, Harper OL, Roose SP, Marder K, D'Antonio K, Devanand DP (2016) Combined treatment with memantine/es-citalopram for older depressed patients with cognitive impairment: a pilot study. *Int J Geriatr Psychiatry* **31**, 648-655.
- [103] Bartels C, Wagner M, Wolfsgruber S, Ehrenreich H, Schneider A, Initiative AsDN (2018) Impact of SSRI Therapy on Risk of Conversion From Mild Cognitive Impairment to Alzheimer's Dementia in Individuals With Previous Depression. *Am J Psychiatry* **175**, 232-241.
- [104] Sepehry AA, Liu G, Dujela C, Kedlac H, Beattie BL, Chappell NL, Hsiung GYR (2016) Medications for depression in Alzheimer's and risk of mortality: a longitudinal observational study from the ADTi. *Alzheimer's and Dementia* **12**, 801.
- [105] Eliwa H, Belzung C, Surget A (2017) Adult hippocampal neurogenesis: Is it the alpha and omega of antidepressant action? *Biochem Pharmacol* **141**, 86-99.
- [106] Dale E, Pehrson AL, Jeyarajah T, Li Y, Leiser SC, Smagin G, Olsen CK, Sanchez C (2016) Effects of serotonin in the hippocampus: how SSRIs and multimodal antidepressants might regulate pyramidal cell function. *CNS Spectr* **21**, 143-161.
- [107] Bianco OA, Manzine PR, Nascimento CM, Vale FA, Pavarini SC, Cominetti MR (2016) Serotonergic antidepressants positively affect platelet ADAM10 expression in patients with Alzheimer's disease. *Int Psychogeriatr* **28**, 939-944.
- [108] Tramutola A, Lanzillotta C, Perluigi M, Butterfield DA (2017) Oxidative stress, protein modification and Alzheimer disease. *Brain Res Bull* **133**, 88-96.
- [109] Forloni G, Balducci C (2018) Alzheimer's Disease, Oligomers, and Inflammation. *J Alzheimers Dis* **62**, 1261-1276.
- [110] Minter MR, Taylor JM, Crack PJ (2016) The contribution of neuroinflammation to amyloid toxicity in Alzheimer's disease. *J Neurochem* **136**, 457-474.
- [111] Alboni S, Poggini S, Garofalo S, Miliore G, El Hajj H, Lecours C, Girard I, Gagnon S, Boisjoly-Villeneuve S, Brunello N, Wolfer DP, Limatola C, Tremblay M, Maggi L, Branchi I (2016) Fluoxetine treatment affects the inflammatory response and microglial function according to the quality of the living environment. *Brain Behav Immun* **58**, 261-271.
- [112] Kempuraj D, Thangavel R, Selvakumar GP, Zaheer S, Ahmed ME, Raikwar SP, Zahoor H, Saeed D, Natteru PA, Iyer S, Zaheer A (2017) Brain and Peripheral Atypical Inflammatory Mediators Potentiate Neuroinflammation and Neurodegeneration. *Front Cell Neurosci* **11**, 216.
- [113] Jeon SW, Kim YK (2016) Neuroinflammation and cytokine abnormality in major depression: Cause or consequence in that illness? *World J Psychiatry* **6**, 283-293.

- [114] Gałecki P, Mossakowska-Wójcik J, Talarowska M (2018) The anti-inflammatory mechanism of antidepressants - SSRIs, SNRIs. *Prog Neuropsychopharmacol Biol Psychiatry* **80**, 291-294.
- [115] Lee SY, Lee SJ, Han C, Patkar AA, Masand PS, Pae CU (2013) Oxidative/nitrosative stress and antidepressants: targets for novel antidepressants. *Prog Neuropsychopharmacol Biol Psychiatry* **46**, 224-235.
- [116] Chang CC, Lee CT, Lan TH, Ju PC, Hsieh YH, Lai TJ (2015) Effects of antidepressant treatment on total antioxidant capacity and free radical levels in patients with major depressive disorder. *Psychiatry Res* **230**, 575-580.
- [117] de Antonio Corradi M, Lisboa AB, Fraguas Junior R (2017) *Revista de Medicina*, pp. 103 - 115.
- [118] Sheline YI, West T, Yarasheski K, Swarm R, Jasielec MS, Fisher JR, Ficker WD, Yan P, Xiong C, Frederiksen C, Grzelak MV, Chott R, Bateman RJ, Morris JC, Mintun MA, Lee JM, Cirrito JR (2014) An antidepressant decreases CSF A β production in healthy individuals and in transgenic AD mice. *Sci Transl Med* **6**, 236re234.
- [119] Cirrito JR, Disabato BM, Restivo JL, Verges DK, Goebel WD, Sathyan A, Hayreh D, D'Angelo G, Benzinger T, Yoon H, Kim J, Morris JC, Mintun MA, Sheline YI (2011) Serotonin signaling is associated with lower amyloid- β levels and plaques in transgenic mice and humans. *Proc Natl Acad Sci U S A* **108**, 14968-14973.
- [120] Aboukhatwa M, Luo Y (2011) Antidepressants modulate intracellular amyloid peptide species in N2a neuroblastoma cells. *J Alzheimers Dis* **24**, 221-234.
- [121] Nisbet RM, Polanco JC, Ittner LM, Götz J (2015) Tau aggregation and its interplay with amyloid- β . *Acta Neuropathol* **129**, 207-220.
- [122] Wu HY, Kuo PC, Wang YT, Lin HT, Roe AD, Wang BY, Han CL, Hyman BT, Chen YJ, Tai HC (2018) β -Amyloid Induces Pathology-Related Patterns of Tau Hyperphosphorylation at Synaptic Terminals. *J Neuropathol Exp Neurol* **77**, 814-826.
- [123] Wang YJ, Ren QG, Gong WG, Wu D, Tang X, Li XL, Wu FF, Bai F, Xu L, Zhang ZJ (2016) Escitalopram attenuates β -amyloid-induced tau hyperphosphorylation in primary hippocampal neurons through the 5-HT_{1A} receptor mediated Akt/GSK-3 β pathway. *Oncotarget* **7**, 13328-13339.
- [124] Pákási M, Bjelik A, Hügyecz M, Kása P, Janka Z, Kálmán J (2005) Imipramine and citalopram facilitate amyloid precursor protein secretion in vitro. *Neurochem Int* **47**, 190-195.
- [125] Fisher JR, Wallace CE, Tripoli DL, Sheline YI, Cirrito JR (2016) Redundant Gs-coupled serotonin receptors regulate amyloid- β metabolism in vivo. *Mol Neurodegener* **11**, 45.
- [126] Huang M, Liang Y, Chen H, Xu B, Chai C, Xing P (2018) The Role of Fluoxetine in Activating Wnt/ β -Catenin Signaling and Repressing β -Amyloid Production in an Alzheimer Mouse Model. *Front Aging Neurosci* **10**, 164.
- [127] Ma J, Gao Y, Jiang L, Chao FL, Huang W, Zhou CN, Tang W, Zhang L, Huang CX, Zhang Y, Luo YM, Xiao Q, Yu HR, Jiang R, Tang Y (2017) Fluoxetine attenuates the impairment of spatial learning ability and prevents neuron loss in middle-aged APP^{swe}/PSEN1^{dE9} double transgenic Alzheimer's disease mice. *Oncotarget* **8**, 27676-27692.
- [128] Sun DS, Gao LF, Jin L, Wu H, Wang Q, Zhou Y, Fan S, Jiang X, Ke D, Lei H, Wang JZ, Liu GP (2017) Fluoxetine administration during adolescence attenuates cognitive and synaptic deficits in adult 3 \times TgAD mice. *Neuropharmacology* **126**, 200-212.
- [129] Gupta M, Neavin D, Liu D, Biernacka J, Hall-Flavin D, Bobo WV, Frye MA, Skime M, Jenkins GD, Batzler A, Kalari K, Matson W, Bhasin SS, Zhu H, Mushiroda T, Nakamura Y, Kubo M, Wang L, Kaddurah-Daouk R, Weinshilboum RM (2016)

- TSPAN5, ERICH3 and selective serotonin reuptake inhibitors in major depressive disorder: pharmacometabolomics-informed pharmacogenomics. *Mol Psychiatry* **21**, 1717-1725.
- [130] Jones HE, Joshi A, Shenkin S, Mead GE (2016) The effect of treatment with selective serotonin reuptake inhibitors in comparison to placebo in the progression of dementia: a systematic review and meta-analysis. *Age Ageing* **45**, 448-456.
- [131] Carrière I, Norton J, Farré A, Wyart M, Tzourio C, Noize P, Pérès K, Fourrier-Réglat A, Ritchie K, Ancelin ML (2017) Antidepressant use and cognitive decline in community-dwelling elderly people - The Three-City Cohort. *BMC Med* **15**, 81.

FIGURES

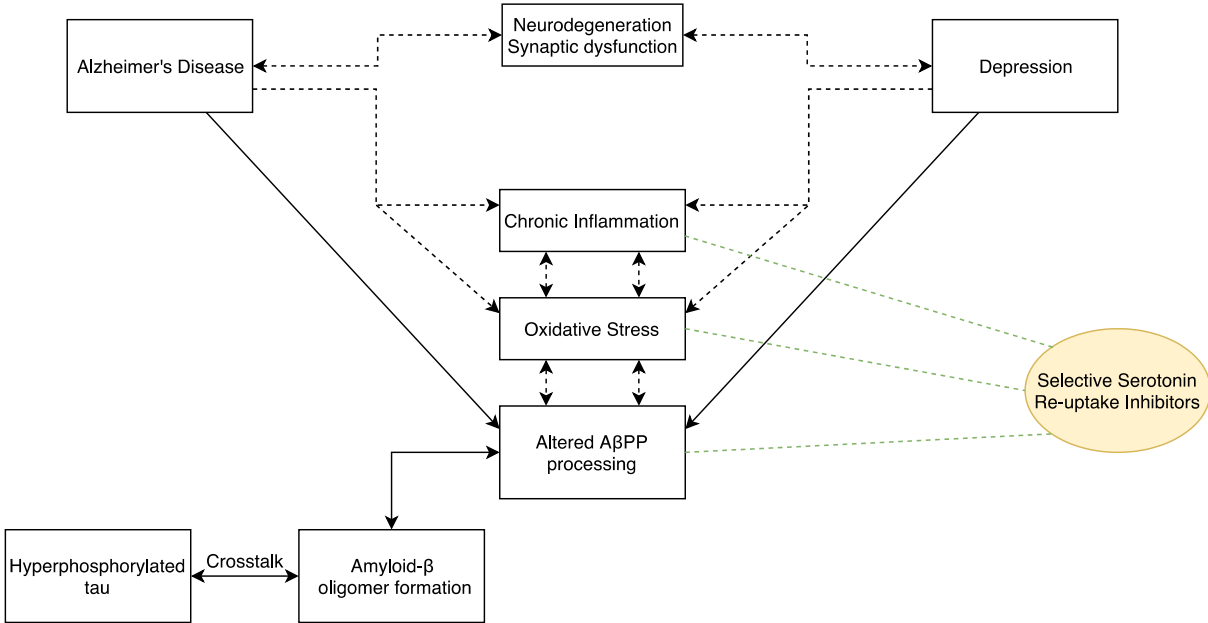


Figure 1. Diagrammatic representation of the therapeutic targets SSRI's may positively effect that are altered in both depression and AD.