

## Regulation of germinal center B-cell differentiation

Zhang, Yang; Garcia Ibanez, Laura; Toellner, Kai-Michael

DOI:

[10.1111/imr.12396](https://doi.org/10.1111/imr.12396)

License:

Creative Commons: Attribution (CC BY)

*Document Version*

Publisher's PDF, also known as Version of record

*Citation for published version (Harvard):*

Zhang, Y, Garcia Ibanez, L & Toellner, K-M 2016, 'Regulation of germinal center B-cell differentiation', *Immunological Reviews*, vol. 270, no. 1, pp. 8-19. <https://doi.org/10.1111/imr.12396>

[Link to publication on Research at Birmingham portal](#)

### **Publisher Rights Statement:**

© 2016 The Authors. *Immunological Reviews* Published by John Wiley & Sons Ltd This is an open access article under the terms of the Creative Commons Attribution License, which permits use, distribution and reproduction in any medium, provided the original work is properly cited.

### **General rights**

Unless a licence is specified above, all rights (including copyright and moral rights) in this document are retained by the authors and/or the copyright holders. The express permission of the copyright holder must be obtained for any use of this material other than for purposes permitted by law.

- Users may freely distribute the URL that is used to identify this publication.
- Users may download and/or print one copy of the publication from the University of Birmingham research portal for the purpose of private study or non-commercial research.
- User may use extracts from the document in line with the concept of 'fair dealing' under the Copyright, Designs and Patents Act 1988 (?)
- Users may not further distribute the material nor use it for the purposes of commercial gain.

Where a licence is displayed above, please note the terms and conditions of the licence govern your use of this document.

When citing, please reference the published version.

### **Take down policy**

While the University of Birmingham exercises care and attention in making items available there are rare occasions when an item has been uploaded in error or has been deemed to be commercially or otherwise sensitive.

If you believe that this is the case for this document, please contact [UBIRA@lists.bham.ac.uk](mailto:UBIRA@lists.bham.ac.uk) providing details and we will remove access to the work immediately and investigate.

Yang Zhang  
Laura Garcia-Ibanez  
Kai-Michael Toellner

## Regulation of germinal center B-cell differentiation

### Authors' addresses

Yang Zhang<sup>1</sup>, Laura Garcia-Ibanez<sup>1</sup>, Kai-Michael Toellner<sup>1</sup>

<sup>1</sup>Institute for Immunology and Immunotherapy, University of Birmingham Medical School, Birmingham, UK.

### Correspondence to:

Kai-Michael Toellner

Institute for Immunology and Immunotherapy

Institute for Biomedical Research

University of Birmingham Medical School

Vincent Drive, Birmingham B15 2TT, UK

Tel.: +44 121 41 58687

e-mail: k.m.toellner@bham.ac.uk

### Acknowledgements

This work was supported by European Union's 6th Framework Programme (FP6) MAMOCELL; Mathematical modelling of *in vivo* cell dynamics in germinal centres, and grants from the MRC and BBSRC. The authors have no conflicts of interest to declare.

This is an open access article under the terms of the Creative Commons Attribution License, which permits use, distribution and reproduction in any medium, provided the original work is properly cited.

This article is part of a series of reviews covering Immunoglobulins: from genes to therapies appearing in Volume 270 of Immunological Reviews.

**Summary:** Germinal centers (GC) are the main sites where antigen-activated B-cell clones expand and undergo immunoglobulin gene hypermutation and selection. Iterations of this process will lead to affinity maturation, replicating Darwinian evolution on the cellular level. GC B-cell selection can lead to four different outcomes: further expansion and evolution, apoptosis (non-selection), or output from the GC with differentiation into memory B cells or plasma cells. T-helper cells in GC have been shown to have a central role in regulating B-cell selection by sensing the density of major histocompatibility complex (MHC):peptide antigen complexes. Antigen is provided on follicular dendritic cells in the form of immune complex. Antibody on these immune complexes regulates antigen accessibility by shielding antigen from B-cell receptor access. Replacement of antibody on immune complexes by antibody generated from GC-derived plasma cell output will gradually reduce the availability of antigen. This antibody feedback can lead to a situation where a slow rise in selection stringency caused by a changing environment leads to directional evolution toward higher affinity antibody.

**Keywords:** germinal center, affinity maturation, immune complex, B-cell selection, Tfh cells, cytokines

### Introduction

B lymphocytes are special cells, being the only known mammalian cell type that enters into somatic hypermutation, a process that leads to evolution on a cellular scale (1). This is preceded by a developmental process that already involves random mutation and rearrangements of dozens of B-cell receptor gene segments in a stochastic manner, producing a large repertoire of B cells with a vast number of possible specificities. The initial repertoire is cleared of autoreactivities in the bone marrow, leading to an extensive naive recirculating B-cell repertoire that still contains some autoreactivities (2). This initial repertoire needs to be able to respond to any possible challenge coming from the outside world, at least by producing B-cell activation of weakly cross-reactive B-cell clones. While weak interactions are sufficient for a T lymphocyte to execute its functions (3), B cells ultimately need to be producing high-affinity antibodies. Low-affinity interactions are

sufficient to induce initial B-cell activation (4, 5). These low-affinity B cells may develop without reentering B-cell follicles (6), leading to early extrafollicular plasma cell generation that produce antibodies that can mediate efficient opsonization (7, 8). Efficient neutralization of pathogens and toxins, however, requires antibodies of high affinity. The increase in B-cell receptor affinity from various initially activated B-cell clones is possible. It involves clonal expansion, somatic hypermutation of the B-cell receptor genes (9, 10) followed by selection of B cells that are of higher affinity than their precursors and do not cross-react with autoantigens (2). We think that iterative steps of mutation and selection leading to higher and higher affinity seen in germinal centers (GC) represent nothing else than Darwinian evolution on a cellular level. Almost 30 years ago it started to become clear that these processes are occurring in GC (11–14). This review summarizes processes during B-cell activation leading to affinity maturation in the GC, with specific attention to the role of antibody during this process.

#### Onset of the antibody response and development of early extrafollicular antibody

B cells activated by antigen contact undergo a complex pattern of migration directed by chemokines and chemokine-like mediators that is leading them through several compartments of secondary lymphoid tissues (reviewed in 6, 15, 16). Antigen has to be in accessible form. Although low-molecular-weight antigens have access to follicles, free antigen in the absence of any adjuvant is not a good inducer of B-cell responses (17, 18). Antibody plays an important role in uptake and distribution of antigens. Immune complexes arriving in spleens via the marginal sinus are quickly absorbed by marginal zone macrophages. B cells bind immune complexes via complement receptor 2 (CR2) and shuttle them to the center of the B-cell follicles (19, 20). A similar process happens in lymph nodes, where antigen transported via lymph enters via macrophage-rich areas between subcapsular sinus and B-cell follicle, and is also transported by non-cognate B cells (21). Free antigen is supposed to be a better inducer of memory B-cell responses. Many memory B cells express switched B-cell receptors. IgG not only enhances B-cell receptor signaling but also enhances antigen presentation to T helper cells (22, 23) and therefore can lead to better plasma cell differentiation (24). However, due to the longevity of plasma cells, there is always pre-existing antibody around at the start of a secondary antibody response. This pre-existing antibody can

immediately complex antigen, so in fact in secondary antibody responses, the antigen is never completely free of antibody or complement. Antibody and immune complex are not only important because they facilitate antigen transport into the B-cell follicles, they will also enhance B-cell activation of memory and naive B cells via ligation of coreceptors. Complement receptor 2 (CD21) not only plays a role in transporting antigen, it also enhances B-cell receptor signaling via CD19 and CD81 (25). The situation is more complex, as in secondary responses switched immunoglobulins (Ig) are present. IgG is less efficient than IgM to fix complement and provides negative costimulatory signals to B cells through FcγRII (CD32) (26).

Antigen-activated naive (15, 27) as well as reactivated memory B cells (28) meet their primed cognate T-lymphocyte counterparts at the interface between follicles and T zone, probably directed there via increased sensitivity to CCR7 ligands, CCL19, and CCL21 (29). The interaction of B and T lymphocytes at the T zone–follicle border results in onset of proliferation and differentiation in the B cells. Effector cells developing from this interaction are the early extrafollicular plasmablasts – foci of plasmablasts that develop between follicles at the border between the T zone and the red pulp or in lymph node medulla (6–8, 15, 28, 30). Alternatively, B cells reenter follicles where they can form GC (16). Also during this early T–B interaction there is strong induction of immunoglobulin class switch recombination. We have demonstrated induction of Ig class switch recombination through the strong expression of immunoglobulin heavy chain transcripts once B cells interact with primed T cells at the follicle–T zone interface. This is seen at this early extrafollicular phase during primary responses (30) as well as 12–24 h after secondary B-cell activation (28). Signals exchanged with T-helper cells during this early extrafollicular cognate interactions include interleukin (IL)-4 (30), which in mice is the classical inducer of IgG1 class switch recombination (31). B-cell activation including class switch recombination also happens in the absence of IL-4 (32), showing that Th2 cytokines, including IL-13 (33), are not the sole factors inducing IgG1 class switch recombination. These results were confirmed later in studies using adoptive transfers of B-cell receptor transgenic cells and antigen-specific T cells. By detecting actual expression of switched Ig classes early on, it was demonstrated that class switching happens very early on before GC form and before extrafollicular plasma cell foci have fully developed (34). We showed recently using TI-II responses that extrafollicular B cell activation induces activa-

tion-induced cytidine deaminase (AID) expression and immunoglobulin switch recombination happens during the first few days after B-cell activation, when they have just entered the edges of the T-cell areas (35).

Although some of the plasmablasts developing in extrafollicular foci undergo class switch recombination and express AID, there is typically no major induction of V region hypermutation or immunoglobulin affinity maturation (36). Studies by us following V region mutations by microdissection and sequencing showed very low numbers of mutations in early extrafollicular plasmablasts (37, 38). As GC are developing at the same time, we concluded that the few mutations found may be derived from early plasmablast output from close by GC. Others have detected mutations in extrafollicular plasma cells in autoimmune MRL.Fas<sup>lpr</sup> mice or *Salmonella typhimurium*-infected mice (39, 40). While autoimmune MRL.Fas<sup>lpr</sup> mice produce autoreactive plasma cells, in *S. typhimurium*-infected mice there was some affinity maturation detectable. The development of genealogical related mutated B-cell receptor V region sequences in this area may indicate that extrafollicular plasmablast differentiation and affinity maturation are happening in extrafollicular sites. However, at least in the case of *Salmonella* infection, there are some Bcl6-positive GC-like structures in the basal areas of follicles (40, 41), so it is also possible that abortive GC with overactive output that never develop to normal size produce hypermutated and affinity matured output that seeds extrafollicular plasma cell foci with hypermutated cells.

Plasmablasts developing after the initial T cell–B cell interactions seem to undergo a pre-programmed number of divisions. Experiments with different numbers of precursor cells show that plasmablasts differentiate after five to six cycles into non-proliferating plasma cells (37). Depending on the extent of the plasma cell response, the majority of plasma cells will die by apoptosis within the next couple of days and typically a limited number of cells survive in the longer term (37). The lifespan of this limited pool of splenic plasma cells seems to be, at least in the medium term, regulated mainly by replacements coming through newly formed plasma cells, which is either new extrafollicular responses or output from GC. This leads to a slow replacement of plasma cells in extrafollicular foci over time with more and more plasma cell being derived from GC (37). Similar observations in bone marrow led to the niche hypothesis for the regulation of plasma cell survival, meaning that limited sized niches of accessory cells present in certain microenvironments do support plasma cell survival in the long term (42).

### B-cell maturation to become a GC B cell

Some of the B cells activated during initial cognate interaction with T cells will not differentiate to form plasma cells but to reenter follicles. Re-entry into follicles is directed by loss of CCR7 ligand sensitivity and prevailing signaling of Ebi2 (43, 44). Through CXCR5 and Ebi2-directed movements, B cells move from outer follicles toward interfollicular areas (27, 45). These are located at the edges of the T-zone under the subcapsular sinus in lymph nodes, or in spleens at the T-zone–red pulp bridging channels. Signals critical for GC development are exchanged in these sites (46). Loss of Ebi2 expression (44, 47) and induction of S1P2 (48) then lead to B cells assembling in the follicle centers where they first form foci of proliferating blasts (49).

IL-4 exchanged during early extrafollicular cognate interaction between B and T cells is important for the induction of GC B-cell differentiation (50). IL-21, produced during this phase by extrafollicular CXCR5<sup>+</sup> Bcl-6<sup>+</sup> T follicular helper (Tfh) cells, seems to have a dual role supporting plasma cell differentiation on one hand, but also supporting GC differentiation and inducing Bcl-6 expression through IL-21R on B cells (51–54). This would mean that IL-21 acts more as a general B-cell differentiation factor than as a factor driving differentiation in a certain direction (54).

B cells ending up in the follicle center proliferate and within days differentiate into GC displaying dark and light zones (49). It is possible that these initial follicular B blasts, similar to extrafollicular plasmablasts, undergo a pre-programmed number of cell cycles. There are not many experiments testing GC development using different numbers of precursor cells that show an effect on GC size at an early stage of the response. Experiments were done using adoptive transfers of different numbers of 4-hydroxy-nitrophenyl (NP)-specific B cells from BCR knock-in mice (55, 56). Untypical for a TI-II antigen, NP-Ficolin immunization of mice with artificially high numbers of antigen-specific B cells induces strong extrafollicular plasmablast differentiation and short-lived GC responses. GC were measured within 24 h after the onset of the follicular response and this showed a good correlation of numbers of transferred antigen-specific B cells and GC sizes, correlating also with the size of the extrafollicular plasmablast pool (56). Other antigens however do not show this correlation. In responses to *Salmonella* there are considerable numbers of B blasts induced that migrate toward follicles and express Bcl6 (40, 41). These, however, do not undergo follicular expansion leading to fully differentiated GC. It has been shown that signals

through TLR4 play at least some role in this (40). Therefore, if there is a pre-programmed set of cell divisions initiating GC differentiation, it is likely that signals such as TLR4 can abort follicular B cell proliferation and differentiation early or lead to premature differentiation of output or death.

Mature GC develop dark zones and light zones. Dark zones contain mainly proliferating cells and some tingible body macrophages (57) containing apoptotic B cells. Earliest studies already showed mitosis in the dark zones of GC (57). Ki-67 staining on the large GC of human tonsils indicates intense proliferation in the GC dark zone (58). B cells of the GC dark zone are termed centroblasts (59). The light zone appears lighter in conventional histology because of the wider spacing between B blasts caused by the bodies of follicular dendritic cells (DC). As FDC hold antigen deposits, it was proposed that antigen-dependent selection happens in the GC light zone (14). Because of the lower proliferative activity in the light zone, B cells here are termed centrocytes. Ki-67 staining shows a considerable percentage of cells being in cell cycle in the light zone as well, especially in the outer light zone (58, 60) where many T helper cells are located. Some of the outer light zone T-helper cells express preformed CD40L (60) indicating that they may have a role in centrocyte activation and selection. More recent studies using nucleotide analogue pulse-chase labeling have clearly shown that B-cell proliferation is triggered in the light zone, with proliferating cells rapidly moving into the dark zone (61, 62). Others have confirmed this using laser-induced fluorescence labeling *in situ*, and also shown convincingly that this is triggered by signals from T-helper cells in the light zone (63).

This demonstrates that migration is a major theme in GC. Light and dark zones are developing due to the balance of sensitivity to CXCL13, expressed by FDC in the light zone (64), and CXCL12 expressed by stromal cells at the GC–T zone interface. Stroma in this area, extending long processes into the dark zone, produces CXCL12 (65). Centrocytes that have been selected in the light zone upregulate CXCR4 expression that leads to increased migration toward CXCL12 (64).

### B-cell selection in GC

GC are sites where hypermutation specifically directed toward VDJ heavy and light chain genes is activated (12, 66). A key enzyme in this process is AID, which is already active at the earlier phase while B blasts undergo initial Ig class switch recombination. This is further upregulated once

B cells express Bcl-6 and fully adopt a GC phenotype (35). As immunoglobulin gene hypermutation should lead to random improvement or deterioration of B-cell receptor affinity, an efficient selection process is needed to select B cells that are of at least as high affinity as their parent cells. Hypermutation is initiated repeatedly. An iterative process of mutation, proliferation, and selection is the only efficient way that may develop the complex mutational patterns that are seen at the end of the affinity maturation process (67). An iterative process is also the only way to explain the development of genealogical trees on a cellular level, with branching leading to variations of mutated Ig V region sequences that have shared mutations developing at the bottom of the tree, and branches leading off from there that share these mutations but differ in additional mutations (12, 13, 68). The development of such genealogical trees shows that reproduction through fierce proliferation, variation through Ig V region hypermutation, and natural selection for higher affinity variants drive a process on the cellular level that is the same as what happens on the level of whole organisms in Darwinian evolution.

B-cell selection shapes the output from the GC reaction not only by shaping genealogical trees but also leading to complement-determining regions of immunoglobulins attracting more and different mutations than the framework areas. Some of these mutational patterns are actual mutational hotspots where DNA sequence motifs are preferentially targeted by the mutational machinery. The majority is due to the effects of selection, with replacement mutations being more likely to be beneficial in the complement-determining regions and strong selection against replacement mutations in framework areas leading to an apparent preference for silent mutations (68–70).

### Role of T-helper cells in GC

Early theories on evolution in the GC focused on the role of antigen held on FDC for the selection of GC B cells (11, 14). Interaction between B cell receptors and antigen held here in the form of immune complexes is the obvious factor that could provide natural selection signals. The common presence of CD4-positive T-helper cells surrounding the area where antigen is held on FDC networks lead to the hypothesis that T-helper cells have a key role in regulating GC selection. Early studies showed that T-helper cells in GC express cytokines such as IL-4 or IL-10 that may regulate B-cell differentiation (71–73). It was then realized that a mechanism, where antigen bound by B cells had to be presented to local

T-helper cells to avoid death by apoptosis, would be a way of how survival of newly emerging autoreactive B cells could be prevented. This led to the hypothesis that interaction of B cells with antigen held on FDC is then followed by antigen uptake and presentation to local Th cells in the outer light zone (74, 75). Indeed, it was shown that T cells infiltrating follicles are specific to the immunizing antigen (76). Further, the presence of preformed CD40L in T-helper cells of the outer light zone shows that they are primed to interact with local B cells (60). Further evidence came from studies of T-independent GC (56). These GC that develop vigorously for 3 days after NP-Ficoll immunization have a very limited lifespan. Similar to GC induced by T-dependent antigen, their B cells upregulate Bcl6, express AID (35), and lose Bcl-2 expression making them sensitive to apoptosis. Although these GC contain plenty of antigen held on FDC that should be able to provide positive selection signals, they involute via widespread apoptosis within 3 days of forming (56). The easiest explanation for this is that at this stage the initial antigenic stimulus is not able to support survival of B cells any longer and B cells have differentiated into a stage where it is essential to receive survival signals from T-helper cells.

Further experiments tracking mutations in these AID expressing GC, in order to obtain information about selection events, produced a disappointing result: apart from 20% of the cells carrying one or two mutations – significantly above the PCR polymerase error rate – there was not much to be seen. This was very little compared with up to six mutations found in 85% of B cells at a comparable stage of development in responses to T-dependent antigen. This means that either, without proper CD40 stimulation from T-helper cells the hypermutation machinery is induced only very inefficiently or, that a lack of signals from T-helper cells in the light zone prevents recirculation into the dark zone preventing accumulation of further rounds of hypermutation (38). The frequency of mutations in these experiments in extrafollicular plasmablasts induced with TI-II antigen is of the same low rate as in the corresponding GC, confirming that extrafollicular responses are associated with some immunoglobulin gene mutations (40). Some minor affinity maturation has been described for T-II antigen-induced antibody responses. It is possible that limited hypermutation in extrafollicular sites not involving GC-like recirculation due to insufficient T-cell help in these areas is responsible for this.

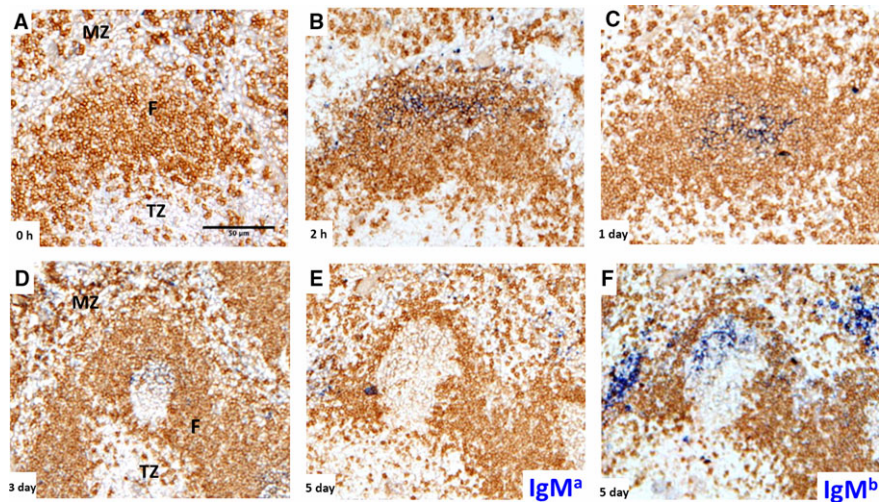
A theoretical study testing different mechanisms acting on affinity maturation using *in silico* modeling predicted that

competition for T-cell help would make the mechanism for selecting higher affinity B cells that would be most efficient in leading to rapid affinity maturation. This was more efficient than competition of individual B cells for access to antigen (77). A mechanism as to how such competition for T-cell help might work would be that higher affinity B cells take up more antigen from FDC, or process it more efficiently and present it leading to higher concentrations of MHCII:peptide on their surfaces (78). This hypothesis has been tested recently in a study that used DEC205 antibody conjugates that are able to force entry of cognate antigens into the antigen presentation pathway of GC B cells. Combination with intravital observation and pulse labeling studies showed that cognate interaction between centrocytes and GC T cells directs B cells back into the centroblasts pool and, more importantly, that this correlates with the amount of antigen present on the surface of the B cells (63, 79). A follow-up from this study found that the amount of antigen present during these interactions with T cells directs the extent of downstream proliferation and V-region hypermutation (80). This proves that T-helper cells in GC are key guardians of GC B-cell differentiation (79). The exact nature of the signals produced by T cells that direct the return to the dark zone is still unclear. While there is a minor increase in IL-4 and IL-21 in GC T cells after induced cognate interactions with B cells (81), these cytokines may have a number of functions.

#### The role of antibody feedback for centrocyte selection

While the role of T cells directing the fate of centrocytes according to the amount of antigen presented is well tested and proven, this model does not provide a satisfactory explanation why certain B cells are more efficient in taking up and presenting antigen than others. Antigen is presented in the form of immune complex on FDC predominantly, but not exclusively, in the GC light zone. It is present there in such abundance that basically every GC cell should have direct contact with copious amounts of antigen to interact with and also to take it up (82, 83) (Figs. 1 and 2).

Development of GC coincides with the differentiation of plasma cells in extrafollicular foci that produce antibody that may complex antigen (7, 8, 30). Antigen is held in native form on FDC as immune complexes. Immune complexation is essential for transport of large antigens toward the follicle center. In lymph nodes, subcapsular sinus macrophages take up immune complexes and transport them to B cell areas and relay them to naive B cells that transport them to FDC



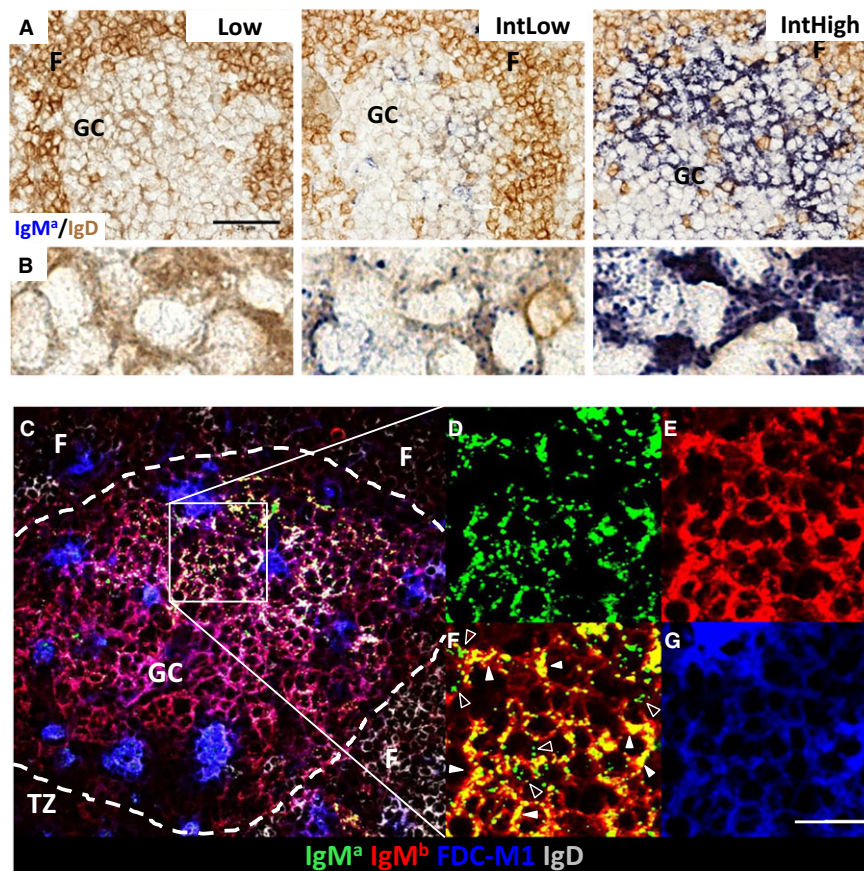
**Fig. 1. Entry and disappearance of IgM<sup>a</sup> after immunization with anti-NP IgM<sup>a</sup>-NP-CGG immune complex.** Following injected IgM<sup>a</sup> over the first 5 days after immunization, carrier primed IgM<sup>b</sup>-expressing C57BL/6 mice were immunized with low affinity anti-NP IgM<sup>a</sup>-NP-CGG immune complex. (A) B-cell follicle and surrounding area before injection showing T zone (TZ), IgD on B cell follicles (F) is stained in brown, surrounded by marginal zone (MZ). (B) IgM<sup>a</sup>-containing immune complex (blue) is easily detectable in marginal sinus and follicle 2 h after injection, and (C) localizes on FDCs in the follicle center within 24 h. (D) Three days post-immunization GCs have formed in the follicle center containing lacy IgM<sup>a</sup>-containing immune complex on the FDC network. (E) Five days after immunization the originally injected low affinity anti-NP IgM<sup>a</sup> is undetectable. (F) An adjacent section of the same germinal center shows strong staining for endogenously produced IgM<sup>b</sup> (blue, right) on the FDC networks and IgM<sup>b</sup> producing extrafollicular plasma cells. Scale bar = 50  $\mu$ m. Further experimental detail described in (90).

in the follicle center (84). Similarly, in spleen, antigen is transported by marginal zone B cells shuttling between marginal zone macrophages and the follicle center (19). Both forms of transport are dependent on binding of complement component C3 in immune complexes to complement receptors first on macrophages, then on B cells, and on FDC (84, 85). Macrophages and B cells can bind C3 simultaneously through expression of different complement receptors (85). Immune complex is transferred from B cells to FDC via an active process involving actin polymerization (86). In mice as well as humans, FDC express splice variants of CR2 (87, 88). Whether these have higher affinity for complement is not known.

Efficient evolution in GC can only be achieved if selection is directed toward higher affinities. Directed evolution and directional selection of species is typically caused by directional changes in the environment (89). With antigen being available in abundance, we wondered whether other factors might restrict antigen access and also lead to a directional change in accessibility of antigen. Antibody produced early on in extrafollicular foci and shielding epitopes in antigen immune complex might cause a barrier that prevents easy access by B-cell receptors. Further, if GC would produce plasma cell output from an early stage during the GC response, and if these antibodies would transfer back and replace pre-existing lower affinity antibodies in immune

complexes inside GC, this would produce a slowly rising threshold for B cells to interact with antigen. Affinity thresholds would represent the affinities of B cells that are available in the GC at a given time, and as affinity of plasma cells would be expected to rise over time, this could provide a slowly rising threshold for antigen access that would support a slow directional evolution in GC over a long time.

To test whether such an antibody feedback mechanism plays a role, we performed experiments where immune complexes of NP-chicken gamma globulin (CGG) and anti-NP IgM were injected into mice (90). The antibody injected was of different allotype than the antibody produced by the mice, making it possible to differentiate between injected and endogenously produced antibody. While this experiment showed that, as seen by others, all immune complexes are quickly transported onto the FDC network in the follicle centers (Fig. 1), it also showed that low affinity antibody in these immune complexes was quickly replaced by endogenous antibody (Fig. 1). Further experiments with antibodies of different affinities showed that this replacement process is a specific effect dependent on the affinity of the specific interaction between antibody and antigen. While replacement of low affinity antibody was quite efficient, with no detectable antibody deposits left on the FDC network 5 days after immunization, high affinity antibodies were easily detectable throughout this time (Fig. 2). Further experiments



**Fig. 2. Affinity dependence of antibody retention in immune complexes on follicular dendritic cells.** Five days post immunization using a protocol similar to Fig. 1, but with immune complexes containing anti-NP IgM of Low, IntLow and IntHigh affinity. For experimental details, see (90). (A) Low (left), IntLow (middle) or IntHigh (right) affinity anti-NP IgM<sup>a</sup> (blue). F: follicle; GC: germinal center. Scale bar: 25  $\mu$ m. (B) High magnification detail of light zone FDC from the images above, showing punctate iccosome-like staining remaining 5 days after injection of IntLow immune complex (middle) and iccosome plus dendritic-like staining after injection of IntHigh immune complex (right). (C) Four parameter confocal microscopy 5 days after IntHigh affinity IgM<sup>a</sup>-IC immunization. Germinal center is outlined with dashed line. Square denotes area magnified in (D)–(G). TZ: T zone; F: follicle; GC: germinal center. (D) Injected IgM<sup>a</sup> (green) shows mainly punctate iccosome-like staining. (E) Endogenous IgM<sup>b</sup> (red) is seen in a dendritic pattern on FDC and on B cells. (F) Double exposure of IgM<sup>a</sup> and IgM<sup>b</sup> shows punctate pattern (open arrowheads) mainly in green (IgM<sup>a</sup> only) and some dendritic staining of immune complexes on FDC (closed arrowheads) in yellow (IgM<sup>a</sup>+IgM<sup>b</sup>) and red (IgM<sup>b</sup>). (G) FDC-M1 staining (blue) shows dendritic FDC staining and tingible body macrophages. Scale bar: 20  $\mu$ m.

designed to test whether such a replacement process could also happen when the GC response was ongoing showed that injected soluble IgM can deposit in ongoing GC. This was affinity dependent and also dependent on time, meaning that higher affinity antibodies were more efficient to replace endogenous antibodies and they were able to do this for longer periods, while lower affinity antibodies were only able to deposit themselves in GC early during the response. Downstream experiments to test effects of this process on selection and affinity maturation showed more apoptosis, less output, and higher affinity antibody produced due to more stringent competition from injected IgM (90).

It is not clear how IgM enters the GC and replaces pre-existing antibody in immune complexes. Antibody binds

epitopes in a reversible manner, and the speed of unbinding and rebinding to antigen determines the affinity of this interaction. Therefore, if antibody produced elsewhere is able to access the GC it should over time replace and penetrate immune complex deposits located there on FDC. GC-derived plasma cells are located very close to the GC perimeter (90–92), and immunoglobulin secreted there may penetrate the GC simply by diffusion, but an active transport process may also be possible.

The experiments described above were all done with IgM antibody. It is not clear what the role of IgG class switching is for antibody feedback. Experiments with IgG of similar avidity showed less efficient deposition on FDC (Y. Zhang, unpublished observation), which may indicate that an active process regulates access of antibody to the GC.



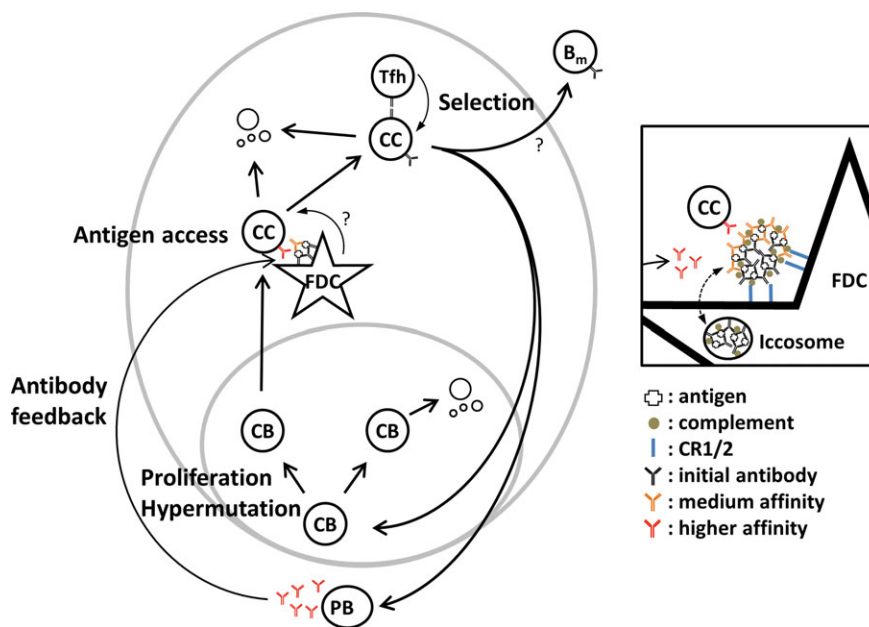
Interactions of B cells with high affinity to hen egg lysozyme (HEL) with HEL coupled to phycoerythrin (PE) on FDC have been studied by intravital microscopy and *in vitro* (93). Intravital videos show these B cells capturing large clusters of material from FDC followed by B-cell activation, and antigen capture was reduced when lower affinity interacting duck egg lysozyme coupled to PE was used. Is uptake of large clusters of antigen compatible with the antibody feedback hypothesis saying that individual affinity-dependent interactions of B-cell receptors determine antigen uptake and activation? Antigen can be taken off FDC in large clusters, even by ripping off some FDC membrane (93). However, B cells can only achieve this if sufficient BCR molecules are able to make contact with the immune complex. This is still dependent on these BCR molecules having higher affinity than competing antibodies. A larger number of BCR successfully binding antigen in immune complex might then either remove clusters of antigen because the BCR–antigen interaction is of higher affinity than the antigen–antibody interaction within the immune complex, or remove it from the FDC because it binds with higher affinity than the immune complex–CR2 interactions. CR2 does bind complement with modest affinity (94), meaning it should be relatively easy for B cells to remove chunks of immune complex from CR1/2 receptors on FDC. Finally, it may not even be necessary to break this interaction, as B cells may acquire parts of membrane with the antigen from donor cells (93, 95).

FDC retain captured immune complex extracellularly in a non-processed form without phagocytosis and transfer into the lysosome antigen-presentation pathway (83). This surface retention on FDC dendrites produces the typical lacy pattern seen in histological staining of immune complexes in GC (28) (Fig. 2). There is a second reservoir of membrane-covered bead-like structures termed iccosomes (96). Extracellular and internalized immune complex are in continuous exchange via an active process, recycling antigens from the outside toward the inside of the FDC and back (85, 86). While a substantial proportion of antigen is recycling, 60% of antigen is not recycling within 3 h (86). FDC can hold intact antigen in the form of immune complex for many months (97, 98). The presence of a second intracellular reservoir may be important, as it may represent a protected habitat where antigen is held for prolonged periods, possibly occasionally presented to reactivate B cells over sustained periods. The presence of two reservoirs is noticeable when high affinity antibody replaces lower affinity antibody during the antibody response (90). The antibody feedback

experiments described above showed that after immunization with anti-NP IgM<sup>a</sup>–NP–CGG immune complex, the lacy patterned dendritic immune complex deposits were replaced by higher affinity endogenous IgM<sup>b</sup> antibody quickly. While this replacement happened, a bead-like staining pattern for the remaining IgM<sup>a</sup> developed (Fig. 2). Immune complex in these beads, which may represent iccosomes, were far better protected from replacement by high affinity antibody over the 8-day period the experiment was performed. If this interpretation is correct, then this would mean that iccosomes are reservoirs of longer term antigen deposition, protected from direct attack by B cells or antibody. One can speculate about the function of such a second antigen reservoir. It might be important to keep some reservoirs of antigen complexed with early-stage antibody which is of low affinity and non-switched, in order to stimulate or rescue B cells at later stages that are not of the highest affinity. It also has been speculated that iccosomes are sites of long-term antigen storage providing antigen deposits for repetitive stimulation and keeping long-term memory alive (99).

#### Signals regulating output from the GC

Much is not known about signals regulating output of memory B cells or plasma cells. Plasma cells are selected for high affinity: comparing antibody affinities produced by and mutations generated in plasma cells compared to GC and memory B cells showed that the bone marrow plasma cell population showed better affinity maturation from an earlier stage of the response than the average GC or memory B cell (100, 101). This would mean that antibody feedback followed by differentiation signals from T-helper cells may regulate plasma cell output from GC. Accordingly, we have shown that higher stringency antibody feedback, apart from leading to more cell death by apoptosis, can restrict the amount of plasma cells developing from GC (90). As stringent antibody feedback reduces the ability of B cells to take up antigen, this should lead to reduced efficiency of interactions with T-helper cells. This was confirmed in an experiment where more stringent antibody feedback lead to a reduction in IgG1 germline transcripts – typically indicators of successful cognate interaction with T cells in the presence of Th2-like cytokines (30). T-helper cells in GC have been shown to produce IL-4 and IL-21 after cognate interactions with B cells (81). IL-4 is known as a factor supporting Th2 responses, Ig class switching, and is important for the induction of GC (50). IL-21 drives B-cell differentiation and can support plasma cell differentiation as well as Bcl-6 induction (54). As IL-21 supports plasma cell differentiation



**Fig. 3. Differentiation and selection of germinal center B cells.** Model for affinity-based differentiation of B cells in germinal center, modified from (15, 79), including antibody feedback (90). B cells proliferate and hypermutate in the germinal center dark zone as centroblasts (CB). CB with non-functional receptors may undergo apoptosis. CB migrate to the germinal center light zone differentiating into centrocytes (CC). These are dependent on interaction with antigen held on follicular dendritic cells (FDC). Additional signals from FDC are possible. In order to avoid apoptosis, CC must be able to take up antigen and present this to Tfh cells. Dependent on the amount of antigen presented they will receive differentiation signals from Tfh cells. Differentiation will guide them back into the dark zone CB pool, leading to further expansion and mutation, or differentiation into plasma cells leaving via the germinal center dark zone. Memory B cells may be a further result of this interaction. Germinal center-derived plasma cells produce antibody of higher affinity that may replace antibody in immune complexes held on FDC, leading to a more stringent barrier for antigen access. Inset: FDC hold immune complex via splice variants of CR2 and Fc receptors (blue). Antigen is initially deposited on FDC complexed with low affinity antibody (black) derived from the early extrafollicular plasma cell response. Over time this is replaced by higher affinity variants (orange and red) that are produced by germinal center output cells. Some of the immune complex cycles through iccosomes, possibly representing long-term reservoirs of antigen and antibody. Note that published experiments on antibody feedback were performed with IgM (90), not with bivalent antibody as schematically depicted here.

during the extrafollicular responses (52), it is a strong candidate for doing the same for GC B cells. Studies on plasma cells generated from GC early on support a role of IL-21 in this process (Y. Zhang, submitted).

GC used to be seen as the main producers of B cell memory. It has become clear now that memory B cells derive from cognate interaction with T cells and are not strictly dependent on signals derived from GC or Tfh cells (102). Memory B cells can be class switched or still express IgM, and class-switched memory B cells are more prone to differentiate into plasma cells upon secondary antigen challenge (103). Markers CD80 and CD273 have been used to better characterize subsets of memory B cells and their differentiation potential (104). Earlier *in vitro* studies showed that human GC B cells rapidly adopt a memory B-cell phenotype when cocultured with stimulated CD40L expressing memory T cells (105). Much is not known what apart from general T helper cell signals are inducing these different memory B-cell populations (106). Research into signals driving centro-

cyte differentiation toward further affinity maturation, exit as plasma cells, or memory B cells certainly will be the subject of intense interest during the coming decade.

### Concluding remarks

B-cell differentiation in GC is regulated by a range of factors starting with antigen deposits on FDC that may or may not be accessible dependent on antibody feedback that is generated by the plasma cells derived from the ongoing GC response (Fig. 3). Aside from providing antigen deposits, FDC may relay further signals (107). Dependent on how much antigen B cells take up antigen from FDC and how efficiently they present this antigen, Tfh cells in the GC light zone will generate regulatory signals that will lead to further rounds of proliferation and mutation or lead to output of effector cells. Which signals exactly regulate alternative fates, and which accessory cells provide them is still unclear. Cytokines and contact-dependent signals are obvious candi-

dates for interventions in this differentiation process that is important not only for affinity matured responses to infection or vaccines, but is also important in the development of autoimmunity and cancer. Whether antibody feedback can contribute to tools manipulating immune responses is an open question. Our own experiments have shown that

immunization with IgM immune complexes of medium affinity can lead to accelerated affinity maturation (Y. Zhang, unpublished observation). This is a delicate balance however, dependent on the exact affinity of the antibody. Finally, whether IgG and class switching have a role in regulating this process is also still unclear.

## References

- Tarlinton DM. Evolution in miniature: selection, survival and distribution of antigen reactive cells in the germinal centre. *Immunol Cell Biol* 2008;**86**:133–138.
- Sabouri Z, et al. Redemption of autoantibodies on anergic B cells by variable-region glycosylation and mutation away from self-reactivity. *Proc Natl Acad Sci USA* 2014;**111**:E2567–E2575.
- Regner M. Cross-reactivity in T-cell antigen recognition. *Immunol Cell Biol* 2001;**79**:91–100.
- Dal Porto JM, Haberman AM, Shlomchik MJ, Kelsoe G. Antigen drives very low affinity B cells to become plasmacytes and enter germinal centers. *J Immunol* 1998;**161**:5373–5381.
- Shih TA, Meffre E, Roederer M, Nussenzweig MC. Role of BCR affinity in T cell dependent antibody responses in vivo. *Nat Immunol* 2002;**3**:570–575.
- MacLennan IC, et al. Extrafollicular antibody responses. *Immunol Rev* 2003;**194**:8–18.
- Jacob J, Kassir R, Kelsoe G. In situ studies of the primary immune response to (4-hydroxy-3-nitrophenyl)acetyl. I. The architecture and dynamics of responding cell populations. *J Exp Med* 1991;**173**:1165–1175.
- Liu YJ, Zhang J, Lane PJ, Chan EY, MacLennan IC. Sites of specific B cell activation in primary and secondary responses to T cell-dependent and T cell-independent antigens. *Eur J Immunol* 1991;**21**:2951–2962.
- Griffiths GM, Berek C, Kaartinen M, Milstein C. Somatic mutation and the maturation of immune response to 2-phenyl oxazolone. *Nature* 1984;**312**:271–275.
- Gearhart PJ, Johnson ND, Douglas R, Hood L. IgG antibodies to phosphorylcholine exhibit more diversity than their IgM counterparts. *Nature* 1981;**291**:29–34.
- MacLennan IC, Gray D. Antigen-driven selection of virgin and memory B cells. *Immunol Rev* 1986;**91**:61–85.
- Jacob J, Kelsoe G, Rajewsky K, Weiss U. Intracloonal generation of antibody mutants in germinal centres. *Nature* 1991;**354**:389–392.
- Küppers R, Zhao M, Hansmann ML, Rajewsky K. Tracing B-cell development in human germinal-centers by molecular analysis of single cells picked from histological sections. *EMBO J* 1993;**12**:4955–4967.
- MacLennan IC. Germinal centers. *Annu Rev Immunol* 1994;**12**:117–139.
- MacLennan IC, et al. The changing preference of T and B cells for partners as T-dependent antibody responses develop. *Immunol Rev* 1997;**156**:53–66.
- Toellner KM. Cognate interactions: extrafollicular IL-4 drives germinal-center reactions, a new role for an old cytokine. *Eur J Immunol* 2014;**44**:1917–1920.
- Roozendaal R, et al. Conduits mediate transport of low-molecular-weight antigen to lymph node follicles. *Immunity* 2009;**30**:264–276.
- Pape KA, Catron DM, Itano AA, Jenkins MK. The humoral immune response is initiated in lymph nodes by B cells that acquire soluble antigen directly in the follicles. *Immunity* 2007;**26**:491–502.
- Arnon TI, Horton RM, Grigorova IL, Cyster JG. Visualization of splenic marginal zone B-cell shuttling and follicular B-cell egress. *Nature* 2013;**493**:684–688.
- Ferguson AR, Youd ME, Corley RB. Marginal zone B cells transport and deposit IgM-containing immune complexes onto follicular dendritic cells. *Int Immunol* 2004;**16**:1411–1422.
- Carrasco YR, Batista FD. B cells acquire particulate antigen in a macrophage-rich area at the boundary between the follicle and the subcapsular sinus of the lymph node. *Immunity* 2007;**27**:160–171.
- Weiser P, Muller R, Braun U, Reth M. Endosomal targeting by the cytoplasmic tail of membrane immunoglobulin. *Science* 1997;**276**:407–409.
- Kaisho T, Schwenk F, Rajewsky K. The roles of gamma 1 heavy chain membrane expression and cytoplasmic tail in IgG1 responses. *Science* 1997;**276**:412–415.
- Martin SW, Goodnow CC. Burst-enhancing role of the IgG membrane tail as a molecular determinant of memory. *Nat Immunol* 2002;**3**:182–188.
- Dempsey PW, Allison ME, Akkaraju S, Goodnow CC, Fearon DT. C3d of complement as a molecular adjuvant: bridging innate and acquired immunity. *Science* 1996;**271**:348–350.
- Nimmerjahn F, Ravetch JV. Antibody-mediated modulation of immune responses. *Immunol Rev* 2010;**236**:265–275.
- Garside P, Ingulli E, Merica RR, Johnson JG, Noelle RJ, Jenkins MK. Visualization of specific B and T lymphocyte interactions in the lymph node. *Science* 1998;**281**:96–99.
- Toellner K-M, Gulbranson-Judge A, Taylor DR, Sze DM-Y, MacLennan ICM. Immunoglobulin switch transcript production in vivo related to the site and time of antigen-specific B cell activation. *J Exp Med* 1996;**183**:2303–2312.
- Reif K, et al. Balanced responsiveness to chemoattractants from adjacent zones determines B-cell position. *Nature* 2002;**416**:94–99.
- Toellner K-M, et al. T helper 1 (Th1) and Th2 characteristics start to develop during T cell priming and are associated with an immediate ability to induce immunoglobulin class switching. *J Exp Med* 1998;**187**:1193–1204.
- Bergstedt-Lindqvist S, Sideras P, MacDonald HR, Severinson E. Regulation of Ig class secretion by soluble products of certain T cell lines. *Immunol Rev* 1984;**78**:25–50.
- Cunningham AF, et al. Th2 activities induced during virgin T cell priming in the absence of IL-4, IL-13, and B cells. *J Immunol* 2002;**169**:2900–2906.
- Cunningham AF, et al. Pinpointing IL-4-independent acquisition and IL-4-influenced maintenance of Th2 activity by CD4 T cells. *Eur J Immunol* 2004;**34**:686–694.
- Pape KA, et al. Visualization of the genesis and fate of isotype-switched B cells during a primary immune response. *J Exp Med* 2003;**197**:1677–1687.
- Marshall JL, et al. Early B blasts acquire a capacity for Ig class switch recombination that is lost as they become plasmablasts. *Eur J Immunol* 2011;**41**:3506–3512.
- Jacob J, Kelsoe G. In situ studies of the primary immune response to (4-hydroxy-3-nitrophenyl) acetyl. II. A common clonal origin for periarteriolar lymphoid sheath-associated foci and germinal centers. *J Exp Med* 1992;**176**:679–687.
- Sze DM, Toellner K-M, Garcia de Vinuesa C, Taylor DR, MacLennan IC. Intrinsic constraint on plasmablast growth and extrinsic limits of plasma cell survival. *J Exp Med* 2000;**192**:813–821.
- Toellner K-M, Jenkinson WE, Taylor DR, Sze DM-Y, Vinuesa CG, MacLennan ICM. Low-level hypermutation in T cell-independent germinal centers compared with high mutation rates associated with T cell-dependent germinal centers. *J Exp Med* 2002;**195**:383–389.
- William J, Euler C, Christensen S, Shlomchik MJ. Evolution of autoantibody responses via somatic hypermutation outside of germinal centers. *Science* 2002;**297**:2066–2070.
- Di Niro R, et al. Salmonella infection drives promiscuous B cell activation followed by extrafollicular affinity maturation. *Immunity* 2015;**43**:120–131.
- Cunningham AF, et al. Salmonella induces a switched antibody response without germinal centers that impedes the extracellular spread of infection. *J Immunol* 2007;**178**:6200–6207.

42. Manz RA, Radbruch A. Plasma cells for a lifetime? *Eur J Immunol* 2002;**32**:923–927.
43. Haynes NM, Allen CD, Lesley R, Ansel KM, Killeen N, Cyster JG. Role of CXCR5 and CCR7 in follicular Th cell positioning and appearance of a programmed cell death gene-1 high germinal center-associated subpopulation. *J Immunol* 2007;**179**:5099–5108.
44. Kelly LM, Pereira JP, Yi T, Xu Y, Cyster JG. EB12 guides serial movements of activated B cells and ligand activity is detectable in lymphoid and nonlymphoid tissues. *J Immunol* 2011;**187**:3026–3032.
45. Gatto D, Brink R. B cell localization: regulation by EB12 and its oxysterol ligand. *Trends Immunol* 2013;**34**:336–341.
46. Kerfoot SM, et al. Germinal center B cell and T follicular helper cell development initiates in the interfollicular zone. *Immunity* 2011;**34**:947–960.
47. Gatto D, Paus D, Basten A, Mackay CR, Brink R. Guidance of B cells by the orphan G protein-coupled receptor EB12 shapes humoral immune responses. *Immunity* 2009;**31**:259–269.
48. Green JA, et al. The sphingosine 1-phosphate receptor S1P(2) maintains the homeostasis of germinal center B cells and promotes niche confinement. *Nat Immunol* 2011;**12**:672–680.
49. MacLennan IC, Liu YJ, Oldfield S, Zhang J, Lane PJ. The evolution of B-cell clones. *Curr Top Microbiol Immunol* 1990;**159**:37–63.
50. Turqueti-Neves A, et al. B-cell-intrinsic STAT6 signaling controls germinal center formation. *Eur J Immunol* 2014;**44**:2130–2138.
51. Linterman MA, et al. IL-21 acts directly on B cells to regulate Bcl-6 expression and germinal center responses. *J Exp Med* 2010;**207**:353–363.
52. Zotos D, et al. IL-21 regulates germinal center B cell differentiation and proliferation through a B cell-intrinsic mechanism. *J Exp Med* 2010;**207**:365–378.
53. Lee SK, et al. B cell priming for extrafollicular antibody responses requires Bcl-6 expression by T cells. *J Exp Med* 2011;**208**:1377–1388.
54. Ozaki K, et al. Regulation of B cell differentiation and plasma cell generation by IL-21, a novel inducer of Blimp-1 and Bcl-6. *J Immunol* 2004;**173**:5361–5371.
55. Cascalho M, Ma A, Lee S, Masat L, Wabl M. A quasi-monoclonal mouse. *Science* 1996;**272**:1649–1652.
56. Garcia de Vinuesa C, et al. Germinal centers without T cells. *J Exp Med* 2000;**191**:485–494.
57. Flemming W. Studien über die Regeneration der Gewebe. *Arch Mikrosk Anat* 1885;**24**:50–91.
58. Gerdes J, Schwab U, Lemke H, Stein H. Production of a mouse monoclonal antibody reactive with a human nuclear antigen associated with cell proliferation. *Int J Cancer* 1983;**31**:13–20.
59. Stein H, Bonk A, Tolksdorf G, Lennert K, Rodt H, Gerdes J. Immunohistologic analysis of the organization of normal lymphoid tissue and non-Hodgkin's lymphomas. *J Histochem Cytochem* 1980;**28**:746–760.
60. Casamayor-Palleja M, Khan M, MacLennan IC. A subset of CD4<sup>+</sup> memory T cells contains preformed CD40 ligand that is rapidly but transiently expressed on their surface after activation through the T cell receptor complex. *J Exp Med* 1995;**181**:1293–1301.
61. Hauser AE, et al. Definition of germinal-center B cell migration in vivo reveals predominant intrazonal circulation patterns. *Immunity* 2007;**26**:655–667.
62. Allen CD, Okada T, Tang HL, Cyster JG. Imaging of germinal center selection events during affinity maturation. *Science* 2007;**315**:528–531.
63. Victora GD, et al. Germinal center dynamics revealed by multiphoton microscopy with a photoactivatable fluorescent reporter. *Cell* 2010;**143**:592–605.
64. Allen CD, et al. Germinal center dark and light zone organization is mediated by CXCR4 and CXCR5. *Nat Immunol* 2004;**5**:943–952.
65. Bannard O, Horton RM, Allen CD, An J, Nagasawa T, Cyster JG. Germinal center centroblasts transition to a centrocyte phenotype according to a timed program and depend on the dark zone for effective selection. *Immunity* 2013;**39**:912–924.
66. Berek C, Berger A, Apel M. Maturation of the immune response in germinal centers. *Cell* 1991;**67**:1121–1129.
67. Kepler TB, Perelson AS. Cyclic re-entry of germinal center B cells and the efficiency of affinity maturation. *Immunol Today* 1993;**14**:412–415.
68. Jacob J, Przylepa J, Miller C, Kelsø G. In situ studies of the primary immune response to (4-hydroxy-3-nitrophenyl)acetyl. III. The kinetics of V region mutation and selection in germinal center B cells. *J Exp Med* 1993;**178**:1293–1307.
69. Dörner T, Brezinschek HP, Foster SJ, Brezinschek RI, Farner NL, Lipsky PE. Delineation of selective influences shaping the mutated expressed human Ig heavy chain repertoire. *J Immunol* 1998;**160**:2831–2841.
70. Weiss U, Rajewsky K. The repertoire of somatic antibody mutants accumulating in the memory compartment after primary immunization is restricted through affinity maturation and mirrors that expressed in the secondary response. *J Exp Med* 1990;**172**:1681–1689.
71. Butch AW, Chung GH, Hoffmann JW, Nahm MH. Cytokine expression by germinal center cells. *J Immunol* 1993;**150**:39–47.
72. Toellner K-M, et al. The human germinal center cells, follicular dendritic cells and germinal center T-cells produce B-cell-stimulating cytokines. *Cytokine* 1995;**7**:344–354.
73. Linterman MA, et al. Foxp3<sup>+</sup> follicular regulatory T cells control the germinal center response. *Nat Med* 2011;**17**:975–982.
74. Gordon J, Katira A, Holder M, MacDonald I, Pound J. Central role of CD40 and its ligand in B lymphocyte responses to T-dependent antigens. *Cell Mol Biol* 1994;**40**(Suppl. 1):1–13.
75. Gulbranson-Judge A, Casamayor-Palleja M, MacLennan IC. Mutually dependent T and B cell responses in germinal centers. *Ann N Y Acad Sci* 1997;**815**:199–210.
76. Gulbranson-Judge A, MacLennan I. Sequential antigen-specific growth of T cells in the T zones and follicles in response to pigeon cytochrome c. *Eur J Immunol* 1996;**26**:1830–1837.
77. Meyer-Hermann ME, Maini PK, Iber D. An analysis of B cell selection mechanisms in germinal centers. *Math Med Biol* 2006;**23**:255–277.
78. Schwickert TA, et al. A dynamic T cell-limited checkpoint regulates affinity-dependent B cell entry into the germinal center. *J Exp Med* 2011;**208**:1243–1252.
79. Victora GD, Nussenzweig MC. Germinal centers. *Annu Rev Immunol* 2012;**30**:429–457.
80. Gitlin AD, Shulman Z, Nussenzweig MC. Clonal selection in the germinal centre by regulated proliferation and hypermutation. *Nature* 2014;**509**:637–640.
81. Shulman Z, et al. Dynamic signaling by T follicular helper cells during germinal center B cell selection. *Science* 2014;**345**:1058–1062.
82. Kosco MH, Tew JG, Szakal AK. Antigenic phenotyping of isolated and in situ rodent follicular dendritic cells (FDC) with emphasis on the ultrastructural demonstration of Ia antigens. *Anat Rec* 1986;**215**(201–213):219–225.
83. Chen LL, Frank AM, Adams JC, Steinman RM. Distribution of horseradish peroxidase (HRP)-anti-HRP immune complexes in mouse spleen with special reference to follicular dendritic cells. *J Cell Biol* 1978;**79**:184–199.
84. Phan TG, Green JA, Gray EE, Xu Y, Cyster JG. Immune complex relay by subcapsular sinus macrophages and noncognate B cells drives antibody affinity maturation. *Nat Immunol* 2009;**10**:786–793.
85. Heesters BA, Myers RC, Carroll MC. Follicular dendritic cells: dynamic antigen libraries. *Nat Rev Immunol* 2014;**14**:495–504.
86. Heesters BA, et al. Endocytosis and recycling of immune complexes by follicular dendritic cells enhances B cell antigen binding and activation. *Immunity* 2013;**38**:1164–1175.
87. Donius LR, Handy JM, Weis JJ, Weis JH. Optimal germinal center B cell activation and T-dependent antibody responses require expression of the mouse complement receptor Cr1. *J Immunol* 2013;**191**:434–447.
88. Liu YJ, et al. Follicular dendritic cells specifically express the long CR2/CD21 isoform. *J Exp Med* 1997;**185**:165–170.
89. Schoener TW. The newest synthesis: understanding the interplay of evolutionary and ecological dynamics. *Science* 2011;**331**:426–429.
90. Zhang Y, et al. Germinal center B cells govern their own fate via antibody feedback. *J Exp Med* 2013;**210**:457–464.
91. Meyer-Hermann M, Mohr E, Pelletier N, Zhang Y, Victora GD, Toellner K-M. A theory of germinal center b cell selection, division, and exit. *Cell Rep* 2012;**26**:162–174.
92. Mohr E, et al. Dendritic cells and monocyte/macrophages that create the IL-6/APRIL-rich lymph node microenvironments where plasmablasts mature. *J Immunol* 2009;**182**:2113–2123.
93. Suzuki K, GrigoroVA I, Phan TG, Kelly LM, Cyster JG. Visualizing B cell capture of cognate antigen

- from follicular dendritic cells. *J Exp Med* 2009;**206**:1485–1493.
94. Sarrias MR, et al. Kinetic analysis of the interactions of complement receptor 2 (CR2, CD21) with its ligands C3d, iC3b, and the EBV glycoprotein gp350/220. *J Immunol* 2001;**167**:1490–1499.
95. Batista FD, Iber D, Neuberger MS. B cells acquire antigen from target cells after synapse formation. *Nature* 2001;**411**:489–494.
96. Szakal AK, Kosco MH, Tew JG. A novel in vivo follicular dendritic cell-dependent iccosome-mediated mechanism for delivery of antigen to antigen-processing cells. *J Immunol* 1988;**140**:341–353.
97. Kedl RM, Tamburini BA. Antigen archiving by lymph node stroma: a novel function for the lymphatic endothelium. *Eur J Immunol* 2015;**45**:2721–2729.
98. Mandel TE, Phipps RP, Abbot AP, Tew JG. Long-term antigen retention by dendritic cells in the popliteal lymph node of immunized mice. *Immunology* 1981;**43**:353–362.
99. Burton GF, Kosco MH, Szakal AK, Tew JG. Iccosomes and the secondary antibody response. *Immunology* 1991;**73**:271–276.
100. Phan TG, et al. High affinity germinal center B cells are actively selected into the plasma cell compartment. *J Exp Med* 2006;**203**:2419–2424.
101. Smith KG, Light A, Nossal GJ, Tarlinton DM. The extent of affinity maturation differs between the memory and antibody-forming cell compartments in the primary immune response. *EMBO J* 1997;**16**:2996–3006.
102. Takemori T, Kaji T, Takahashi Y, Shimoda M, Rajewsky K. Generation of memory B cells inside and outside germinal centers. *Eur J Immunol* 2014;**44**:1258–1264.
103. Dogan I, et al. Multiple layers of B cell memory with different effector functions. *Nat Immunol* 2009;**10**:1292–1299.
104. Zuccarino-Catania GV, et al. CD80 and PD-L2 define functionally distinct memory B cell subsets that are independent of antibody isotype. *Nat Immunol* 2014;**15**:631–637.
105. Casamayor-Palleja M, Feuillard J, Ball J, Drew M, MacLennan IC. Centrocytes rapidly adopt a memory B cell phenotype on co-culture with autologous germinal centre T cell-enriched preparations. *Int Immunol* 1996;**8**:737–744.
106. Shlomchik MJ, Weisel F. Germinal center selection and the development of memory B and plasma cells. *Immunol Rev* 2012;**247**:52–63.
107. Gaspal FM, et al. The generation of thymus-independent germinal centers depends on CD40 but not on CD154, the T cell-derived CD40-ligand. *Eur J Immunol* 2006;**36**:1665–1673.