

## Body mass index and survival in people with heart failure

Jones, Nicholas R; Ordóñez-Mena, José M; Roalfe, Andrea K; Taylor, Kathryn S; Goyder, Clare R; Hobbs, Fd Richard; Taylor, Clare J

DOI:

[10.1136/heartjnl-2023-322459](https://doi.org/10.1136/heartjnl-2023-322459)

License:

Creative Commons: Attribution (CC BY)

### Document Version

Publisher's PDF, also known as Version of record

### Citation for published version (Harvard):

Jones, NR, Ordóñez-Mena, JM, Roalfe, AK, Taylor, KS, Goyder, CR, Hobbs, FR & Taylor, CJ 2023, 'Body mass index and survival in people with heart failure', *Heart*, vol. 109, no. 20, pp. 1542-1549.  
<https://doi.org/10.1136/heartjnl-2023-322459>

[Link to publication on Research at Birmingham portal](#)

### General rights

Unless a licence is specified above, all rights (including copyright and moral rights) in this document are retained by the authors and/or the copyright holders. The express permission of the copyright holder must be obtained for any use of this material other than for purposes permitted by law.

- Users may freely distribute the URL that is used to identify this publication.
- Users may download and/or print one copy of the publication from the University of Birmingham research portal for the purpose of private study or non-commercial research.
- User may use extracts from the document in line with the concept of 'fair dealing' under the Copyright, Designs and Patents Act 1988 (?)
- Users may not further distribute the material nor use it for the purposes of commercial gain.

Where a licence is displayed above, please note the terms and conditions of the licence govern your use of this document.

When citing, please reference the published version.

### Take down policy

While the University of Birmingham exercises care and attention in making items available there are rare occasions when an item has been uploaded in error or has been deemed to be commercially or otherwise sensitive.

If you believe that this is the case for this document, please contact [UBIRA@lists.bham.ac.uk](mailto:UBIRA@lists.bham.ac.uk) providing details and we will remove access to the work immediately and investigate.



Original research

# Body mass index and survival in people with heart failure

Nicholas R Jones <sup>1</sup>, José M Ordóñez-Mena,<sup>1,2</sup> Andrea K Roalfe,<sup>1</sup> Kathryn S Taylor,<sup>1</sup> Clare R Goyder <sup>1</sup>, FD Richard Hobbs <sup>1</sup>, Clare J Taylor <sup>1</sup>

► Additional supplemental material is published online only. To view, please visit the journal online (<http://dx.doi.org/10.1136/heartjnl-2023-322459>).

<sup>1</sup>Nuffield Department of Primary Care Health Sciences, University of Oxford, Oxford, UK  
<sup>2</sup>NIHR Oxford Biomedical Research Centre, Oxford, UK

## Correspondence to

Dr Nicholas R Jones, Nuffield Department of Primary Care Health Sciences, University of Oxford, Oxford, OX2 6GG, UK; [nicholas.jones2@phc.ox.ac.uk](mailto:nicholas.jones2@phc.ox.ac.uk)

Received 30 January 2023  
Accepted 18 May 2023  
Published Online First  
8 June 2023

## ABSTRACT

**Aims** In people with heart failure (HF), a high body mass index (BMI) has been linked with better outcomes ('obesity paradox'), but there is limited evidence in community populations across long-term follow-up. We aimed to examine the association between BMI and long-term survival in patients with HF in a large primary care cohort.

**Methods** We included patients with incident HF aged  $\geq 45$  years from the Clinical Practice Research Datalink (2000–2017). We used Kaplan-Meier curves, Cox regression and penalised spline methods to assess the association of pre-diagnostic BMI, based on WHO classification, with all-cause mortality.

**Results** There were 47 531 participants with HF (median age 78.0 years (IQR 70–84), 45.8% female, 79.0% white ethnicity, median BMI 27.1 (IQR 23.9–31.0)) and 25 013 (52.6%) died during follow-up. Compared with healthy weight, people with overweight (HR 0.78, 95% CI 0.75 to 0.81, risk difference (RD) –4.1%), obesity class I (HR 0.76, 95% CI 0.73 to 0.80, RD –4.5%) and class II (HR 0.76, 95% CI 0.71 to 0.81, RD –4.5%) were at decreased risk of death, whereas people with underweight were at increased risk (HR 1.59, 95% CI 1.45 to 1.75, RD 11.2%). In those underweight, this risk was greater among men than women ( $p$  value for interaction=0.02). Class III obesity was associated with increased risk of all-cause mortality compared with overweight (HR 1.23, 95% CI 1.17 to 1.29).

**Conclusion** The U-shaped relationship between BMI and long-term all-cause mortality suggests a personalised approach to identifying optimal weight may be needed for patients with HF in primary care. Underweight people have the poorest prognosis and should be recognised as high-risk.

## INTRODUCTION

Heart failure (HF) affects around 1%–2% of adults globally.<sup>1</sup> The mean 5-year survival for people with HF is around 50%.<sup>2</sup> Survival rates have shown only modest improvement since the start of the century, despite the discovery of several treatments that confer prognostic benefit.<sup>3</sup>

The prevalence of obesity has nearly tripled since 1975, with close to 2 billion adults globally now living with overweight or obesity.<sup>4</sup> People with obesity are at increased risk of cardiovascular disease (CVD) and up to twice as likely to develop HF compared with people with a healthy body mass index (BMI).<sup>5,6</sup> This association has been confirmed

## WHAT IS ALREADY KNOWN ON THIS TOPIC

⇒ Previous research suggests a so-called 'obesity paradox' exists, whereby people with obesity are more likely to develop heart failure (HF) but survive longer with it, compared with people with healthy weight. However, these data are based on clinical trial or secondary care studies and may not be generalisable to the wider population with HF seen in primary care, who are typically older and frailer.

## WHAT THIS STUDY ADDS

⇒ In this large primary care study, people with HF who were underweight were at the greatest risk of death, but only where body mass index (BMI) was recorded within 3 years of death or end of follow-up. In contrast, people with class I or II obesity were at lower risk of death than people with a healthy weight.

## HOW THIS STUDY MIGHT AFFECT RESEARCH, PRACTICE OR POLICY

⇒ Clinicians may need to adopt a tailored approach to discussions of weight management in people with HF, recognising that previous research suggests weight loss in those with obesity may improve symptoms but that a lower BMI is associated with worse survival. Future research could investigate the effect of intentional weight loss in terms of survival among people with HF.

using other measures of adiposity, such as waist circumference and waist-hip ratio.<sup>7</sup>

Among people with established HF, increasing BMI has been linked to a reduced risk of all-cause mortality, the so-called 'obesity paradox'.<sup>8,9</sup> However, these data are from clinical trial participants or studies conducted in secondary or tertiary centres, meaning the results may not be generalisable to the larger population living with HF in the community.

We are not aware of any studies that have analysed the prognostic significance of BMI among people with HF using routine primary care data. Many patients will first present with symptoms of HF to primary care clinicians and an awareness of the impact of BMI on outcome could be important to guide clinical care. In this analysis, we examine



► <https://dx.doi.org/10.1136/heartjnl-2023-322797>



© Author(s) (or their employer(s)) 2023. Re-use permitted under CC BY. Published by BMJ.

**To cite:** Jones NR, Ordóñez-Mena JM, Roalfe AK, *et al.* *Heart* 2023;**109**:1542–1549.

the association between BMI and long-term survival in patients with HF in a large primary care cohort.

## METHODS

The present study is a secondary analysis of the data obtained for 'SurviveHF', a retrospective electronic health record (EHR) linkage community study that compared long-term survival between people with and without HF.<sup>3</sup>

### Patient and public involvement

Two patients with HF informed the original 'SurviveHF' research question and study design. Their experience was that prognosis in HF was not often discussed and they had been surprised to find it was a long-term condition, rather than a terminal diagnosis. They wanted 'doctors to have the facts' about survival rates in HF to better inform discussions with patients.

### Design and setting

We completed a retrospective cohort study using routinely collected primary care data from Clinical Practice Research Datalink (CPRD), between 2000 and 2017. Participating practices contributed to at least 1 year of data and met data quality measures. The data are linked to secondary care Hospital Episode Statistics (HES) to help ensure the accuracy of diagnostic codes. This limited the study to practices in England. Data are also linked to Office for National Statistics (ONS) mortality data and the Index of Multiple Deprivation (IMD) socio-economic data.

### Study population

We included patients aged  $\geq 45$  years who had an incident diagnostic code for HF in their EHR during the study period, were eligible for data linkage and registered at an eligible practice for  $\geq 12$  months. We excluded patients with no recorded BMI or diagnosed with HF prior to 1 January 2000.

Patients entered the cohort at the latest of the following: their 45th birthday, 1 January 2000, patient registration date plus 12 months, practice up-to-standard date plus 12 months. Patients exited the cohort on the earliest of the following: 31 December 2017, date of death, patient transfer out date, last date of practice data collection, last date of available linked data.

### Case definition

We defined new HF cases as the earliest recorded diagnostic code in the EHR (the index date). Time to death was measured from the index date.

### Exposure assessment

BMI was categorised according to the WHO classification as underweight (BMI  $< 18.5$  kg/m<sup>2</sup>), healthy weight (18.5–24.9 kg/m<sup>2</sup>), overweight (25–29.9 kg/m<sup>2</sup>) or obesity class I (30–34.9 kg/m<sup>2</sup>), II (35–39.9 kg/m<sup>2</sup>) or III ( $\geq 40$  kg/m<sup>2</sup>).<sup>10</sup> We used the most recent BMI reading on or before the index date. Recent data support a move to more ethnicity-specific BMI cut-offs,<sup>11</sup> so we also categorised BMI into finer data-driven categories using deciles to assess the shape of the relationship with all-cause mortality.

### Covariates

Patient-level characteristics included age, sex, ethnicity, smoking status, IMD, systolic and diastolic blood pressure, total cholesterol, and history of atrial fibrillation, angina, ischaemic heart disease, myocardial infarction, hypertension, type 2 diabetes mellitus, stroke, valvular disease and other CVDs.

## Outcomes

The primary outcome was all-cause mortality. Secondary outcomes included cause of death and cardiovascular mortality. We also assessed effect modification by sex of the association of BMI with all-cause mortality.

### Statistical analysis

We undertook a descriptive analysis of the cohort based on categories of BMI. We calculated median time and IQR between BMI measurement and HF diagnosis. Causes of death were tabulated by BMI categories. Kaplan-Meier survival curves were produced to compare BMI categories and to estimate 1-year, 5-year, 10-year and 15-year overall survival rates by BMI subgroups as a univariable analysis in the whole cohort and within age categories. Cox regression was used to predict age-adjusted survival rates by BMI category.

For the primary analysis, we ran a Cox proportional hazards model to estimate HRs and 95% CIs, as a univariable analysis, age and sex adjusted and then a multivariable model adjusted for the covariates listed above. Penalised splines were used to model BMI as a continuous variable and assess whether the relationship with all-cause mortality was non-linear. Cox models were stratified by sex to assess variability in the association of BMI with all-cause mortality, and interaction terms of BMI categories with sex and ethnicity were added to the primary analysis to test for effect modification.

Low BMI close to the end of life may identify people with a poor prognosis because of factors such as sarcopenia, cachexia or advanced frailty. High BMI in people with HF may be due to fluid overload and therefore sometimes reflects more advanced disease. To discard the influence of reverse causality leading to incorrect conclusions about the direction of association between BMI and risk of death, a sensitivity analysis was conducted repeating the primary analysis after excluding deaths occurring within 1, 2, 3, 4 and 5 years of BMI measurement.

We suspected data such as BMI, smoking and cholesterol would not be missing at random and so chose to use a complete case analysis, as multiple imputation may lead to biased estimates.<sup>12</sup> We performed multiple imputation with chained equations to confirm the results of the main analysis were not significantly different to the complete case analysis.

All analyses were completed in R V.4.2.0 (Vienna, Austria).<sup>13 14</sup>

## RESULTS

There were 47 531 included patients with a median age of 78.0 years (IQR 70–84) and BMI 27.1 (IQR 23.9–31.0). The median time between BMI measurement and HF diagnosis was 1 year (IQR 0.33–3 years). Most participants were overweight (36.3%) compared with 31.3% having a healthy weight, 30.1% having obesity (19.0%, 7.2% and 3.9% with obesity classes I, II and III, respectively) and 2.3% underweight.

People with a higher than healthy BMI were more likely to be younger and current smoker and have type 2 diabetes and hypertension, whereas people with underweight were more likely to be female, older and have a history of stroke (table 1).

For this analysis, 8428 (15.1%) were removed from the original cohort because they did not have a recorded BMI in their EHR. These people were more likely to be women, older and to have missing information on ethnicity, smoking status and medical history (online supplemental table 1).

Table 1 Baseline characteristics of people with heart failure stratified by BMI category

Variable	Underweight	Healthy weight	Overweight	Obesity class I	Obesity class II	Obesity class III	All cohort
	(<18.5 kg/m <sup>2</sup> )	(18.5–25 kg/m <sup>2</sup> )	(25–30 kg/m <sup>2</sup> )	(30–35 kg/m <sup>2</sup> )	(35–40 kg/m <sup>2</sup> )	(≥40 kg/m <sup>2</sup> )	
Total	1084 (100)	14880 (100)	17277 (100)	9013 (100)	3400 (100)	1877 (100)	47531 (100)
Gender, n (%)							
Men	315 (29.06)	7429 (49.93)	10486 (60.69)	5086 (56.43)	1674 (49.24)	765 (40.76)	25755 (54.19)
Women	769 (70.94)	7451 (50.07)	6791 (39.31)	3927 (43.57)	1726 (50.76)	1112 (59.24)	21776 (45.81)
Age (years), median (IQR)	82 (75–87)	81 (74–86)	78 (71–84)	76 (68–82)	73 (65–79)	68 (60–75)	78 (70–84)
Age category, n (%)							
45–54	17 (1.57)	316 (2.12)	542 (3.14)	390 (4.33)	210 (6.18)	189 (10.07)	1664 (3.50)
55–64	64 (5.90)	980 (6.59)	1497 (8.66)	1140 (12.65)	609 (17.91)	519 (27.65)	4809 (10.12)
65–74	165 (15.22)	2624 (17.63)	4002 (23.16)	2605 (28.90)	1139 (33.50)	654 (34.84)	11189 (23.54)
75–84	416 (38.38)	5952 (40.00)	7157 (41.43)	3492 (38.74)	1138 (33.47)	441 (23.49)	18596 (39.12)
85–94	391 (36.07)	4620 (31.05)	3870 (22.40)	1328 (14.73)	291 (8.56)	74 (3.94)	10574 (22.25)
94+	31 (2.86)	388 (2.61)	209 (1.21)	58 (0.64)	13 (0.38)	0 (0.00)	699 (1.47)
Ethnicity, n (%)							
White	863 (79.61)	11755 (79.00)	13731 (79.48)	7018 (77.87)	2696 (79.29)	1474 (78.53)	37537 (78.97)
Non-white	16 (1.48)	381 (2.56)	489 (2.83)	296 (3.28)	110 (3.24)	56 (2.98)	1348 (2.84)
Mixed	127 (11.72)	1738 (11.68)	2155 (12.47)	1288 (14.29)	490 (14.41)	280 (14.92)	6078 (12.79)
Missing	78 (7.20)	1006 (6.76)	902 (5.22)	411 (4.56)	104 (3.06)	67 (3.57)	2568 (5.40)
Smoking status, n (%)							
Never	403 (37.18)	6137 (41.24)	6554 (37.93)	3172 (35.19)	1191 (35.03)	649 (34.58)	18106 (38.09)
Former	260 (23.99)	2240 (15.05)	2013 (11.65)	998 (11.07)	398 (11.71)	243 (12.95)	6152 (12.94)
Current	406 (37.45)	6337 (42.59)	8531 (49.38)	4746 (52.66)	1771 (52.09)	960 (51.15)	22751 (47.87)
Missing	15 (1.38)	166 (1.12)	179 (1.04)	97 (1.08)	40 (1.18)	25 (1.33)	522 (1.10)
Index of multiple deprivation (quintile), n (%)							
1 (most deprived)	181 (16.70)	3191 (21.44)	3534 (20.45)	1570 (17.42)	530 (15.59)	238 (12.68)	9244 (19.45)
2	260 (23.99)	3522 (23.67)	4052 (23.45)	1970 (21.86)	699 (20.56)	351 (18.70)	10854 (22.84)
3	230 (21.22)	3111 (20.91)	3723 (21.55)	1957 (21.71)	755 (22.21)	401 (21.36)	10177 (21.41)
4	236 (21.77)	2990 (20.09)	3539 (20.48)	2001 (22.20)	776 (22.82)	496 (26.43)	10038 (21.12)
5 (least deprived)	175 (16.14)	2048 (13.76)	2415 (13.98)	1507 (16.72)	640 (18.82)	390 (20.78)	7175 (15.10)
Missing	2 (0.18)	18 (0.12)	14 (0.08)	8 (0.09)	0 (0.00)	1 (0.05)	43 (0.09)
Medical history of							
Atrial fibrillation, n (%)	280 (25.83)	4195 (28.19)	4748 (27.48)	2393 (26.55)	894 (26.29)	470 (25.04)	12980 (27.31)
Angina, n (%)	175 (16.14)	3214 (21.60)	4160 (24.08)	2201 (24.42)	765 (22.50)	356 (18.97)	10871 (22.87)
Type 2 diabetes mellitus, n (%)	132 (12.18)	2480 (16.67)	4251 (24.60)	3056 (33.91)	1502 (44.18)	1004 (53.49)	12425 (26.14)
Hypertension, n (%)	501 (46.22)	8122 (54.58)	10512 (60.84)	6057 (67.20)	2474 (72.76)	1386 (73.84)	29052 (61.12)
Ischaemic heart disease, n (%)	222 (20.48)	3934 (26.44)	5095 (29.49)	2664 (29.56)	870 (25.59)	411 (21.90)	13196 (27.76)
Myocardial infarction, n (%)	186 (17.16)	3095 (20.80)	4043 (23.40)	2048 (22.72)	635 (18.68)	264 (14.06)	10271 (21.61)

Continued

Table 1 Continued

Variable	Underweight ( $<18.5$ kg/m <sup>2</sup> )	Healthy weight (18.5–25 kg/m <sup>2</sup> )	Overweight (25–30 kg/m <sup>2</sup> )	Obesity class I (30–35 kg/m <sup>2</sup> )	Obesity class II (35–40 kg/m <sup>2</sup> )	Obesity class III ( $\geq 40$ kg/m <sup>2</sup> )	All cohort
Other cardiovascular disease, n (%)	288 (26.57)	3944 (26.51)	4563 (26.41)	2219 (24.62)	771 (22.68)	381 (20.30)	12 166 (25.60)
Stroke, n (%)	131 (12.08)	1759 (11.82)	2040 (11.81)	1024 (11.36)	339 (9.97)	139 (7.41)	5432 (11.43)
Valvular disease, n (%)	101 (9.32)	1407 (9.46)	1411 (8.17)	559 (6.20)	180 (5.29)	78 (4.16)	3736 (7.86)
BMI (kg/m <sup>2</sup> ), median (IQR)	17.54 (16.8–18.04)	22.8 (21.27–23.99)	27.29 (26.14–28.53)	31.97 (30.9–33.23)	36.91 (35.85–38.11)	43.71 (41.49–47.33)	27.06 (23.88–31)
Systolic blood pressure (mm Hg), median (IQR)	132 (120–146)	136 (120–148)	137 (124–150)	138 (125–150)	140 (127–150)	138.5 (126–150)	137 (123–150)
Missing	7 (0.65)	83 (0.56)	77 (0.45)	37 (0.41)	5 (0.15)	3 (0.16)	212 (0.45)
Diastolic blood pressure (mm Hg), median (IQR)	74 (67–80)	76 (70–82)	78 (70–82)	79 (70–84)	80 (70–85)	80 (70–86)	78 (70–83)
Missing	7 (0.65)	83 (0.56)	77 (0.45)	37 (0.41)	5 (0.15)	3 (0.16)	212 (0.45)
Total cholesterol (mmol/L), median (IQR)	4.7 (3.95–5.5)	4.6 (3.8–5.5)	4.5 (3.8–5.4)	4.5 (3.8–5.3)	4.5 (3.8–5.3)	4.4 (3.7–5.2)	4.5 (3.8–5.4)
Missing	373 (34.41)	4082 (27.43)	3623 (20.97)	1462 (16.22)	398 (11.71)	202 (10.76)	10 140 (21.33)

BMI, body mass index.

### Risk of all-cause mortality

There were 25 013 deaths during a mean 3.3 years of follow-up. The 1-year, 5-year, 10-year and 15-year overall survival rates appeared to improve from lower to higher BMI groups (table 2). For example, the 10-year survival rate among people with underweight was 10.3% (95% CI 7.8% to 13.8%) compared with 19.1% (95% CI 18.1% to 20.1%) with healthy weight and 31.2% (95% CI 29.7% to 32.8%) with class I obesity. This pattern was also seen after stratifying and adjusting by age (online supplemental tables 2 and 3). Figure 1 shows the lower probability of overall survival over time among people with underweight, healthy weight or overweight compared with those with obesity.

After adjusting for potential confounders, compared with people with healthy weight, people with underweight were at increased risk of all-cause mortality (HR 1.59, 95% CI 1.45 to 1.75, risk difference (RD) 11.2%). People with overweight (HR 0.78, 95% CI 0.75 to 0.81, RD –4.1%), obesity class I (HR 0.76, 95% CI 0.73 to 0.80, RD –4.5%) and obesity class II (HR 0.76, 95% CI 0.71 to 0.81, RD –4.5%) were at decreased risk of all-cause mortality (table 3, online supplemental table 4). People with obesity class III were not at increased risk of all-cause mortality compared with those with healthy weight, but were at greater risk than those with overweight or obesity class I or II. The HR for death comparing people with obesity class III to overweight was 1.23 (95% CI 1.17 to 1.29). The increased risk of all-cause mortality with underweight was greater among men than women (p value for interaction=0.02) (online supplemental table 5). There was no evidence of effect modification by sex for the higher BMI categories.

Testing for an interaction between ethnicity and BMI found no significant difference from our main findings (online supplemental table 6). The results of the complete case analysis and multiple imputation were broadly similar (online supplemental table 7). We confirmed that the proportional hazards assumption was met using Schoenfeld's residual plots.

The analysis using penalised splines showed a U-shaped relationship whereby those with overweight and obesity class I were at lowest risk of all-cause mortality (figure 2). The analysis using deciles of equally spaced BMI categories also showed no evidence of a linear inverse association between BMI and all-cause mortality (figure 3).

The increased risk of all-cause mortality among people with underweight was sensitive to the time between BMI assessment and death (online supplemental table 8). The association was no longer there in people who had their BMI measurement recorded more than 3 years apart from their death or end of follow-up. The same principle applied to the decreased risks of all-cause mortality seen among those with obesity classes I and II. In contrast, the lower risk of death seen among people with HF who were overweight was robust to the exclusions of those with their BMI assessment within 5 years of their time of death or censoring.

### Cause-specific mortality

Among people who were underweight, a relatively lower proportion died from CVD or cancer and a higher proportion died from respiratory diseases compared with other weight categories (online supplemental table 9). However, fewer people with overweight or obesity died directly from HF or had HF listed as a contributory cause of death compared with people with underweight or obesity class III, meaning the higher CVD mortality in these two groups was due to cardiovascular conditions other than HF.

**Table 2** Survival rates at 1, 5, 10 and 15 years after a diagnosis of HF stratified by BMI category

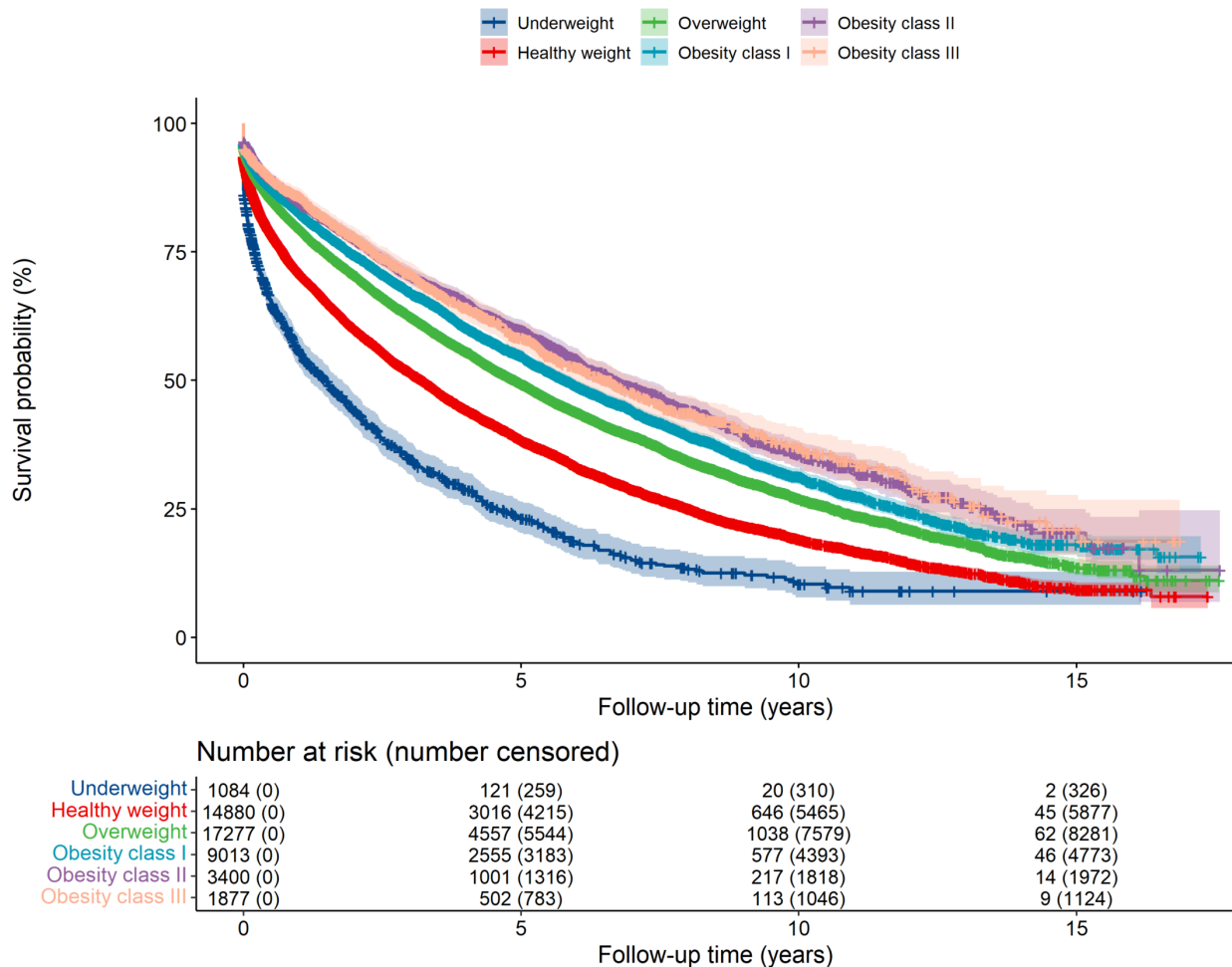
Subgroup	Survival rate (% (95% CI))			
	1 year	5 years	10 years	15 years
Overall*	77.45 (77.07 to 77.84)	47.42 (46.90 to 47.95)	25.83 (25.22 to 26.45)	13.57 (12.70 to 14.50)
By BMI category:				
Underweight (<18.5 kg/m <sup>2</sup> )	55.85 (52.89 to 58.98)	23.14 (20.28 to 26.40)	10.33 (7.75 to 13.77)	8.98 (6.34 to 12.71)
Healthy weight (18.5–25 kg/m <sup>2</sup> )	70.80 (70.06 to 71.55)	38.39 (37.48 to 39.32)	19.07 (18.13 to 20.07)	9.20 (7.96 to 10.64)
Overweight (25–30 kg/m <sup>2</sup> )	79.52 (78.90 to 80.13)	49.35 (48.48 to 50.23)	26.95 (25.94 to 27.99)	13.58 (12.09 to 15.26)
Obesity class I (30–35 kg/m <sup>2</sup> )	82.60 (81.80 to 83.40)	54.75 (53.55 to 55.98)	31.22 (29.73 to 32.78)	18.09 (16.15 to 20.27)
Obesity class II (35–40 kg/m <sup>2</sup> )	84.66 (83.43 to 85.91)	59.87 (57.96 to 61.86)	35.56 (33.02 to 38.29)	20.31 (16.53 to 24.96)
Obesity class III (≥40 kg/m <sup>2</sup> )	85.83 (84.23 to 87.46)	58.19 (55.51 to 61.01)	36.84 (33.34 to 40.71)	20.99 (15.93 to 27.66)

\*Among people with HF and a measurement of BMI.  
BMI, body mass index; HF, heart failure.

After adjusting for potential confounders, people who were underweight were at increased risk of dying from CVD compared with people with healthy weight (HR 1.51, 95% CI 1.32 to 1.73) (online supplemental table 10). People with overweight (HR 0.79, 95% CI 0.75 to 0.83), obesity class I (HR 0.77, 95% CI 0.72 to 0.81) and obesity class II (HR 0.78, 95% CI 0.71 to 0.85) were at decreased risk of dying from CVD.

**DISCUSSION**

In this large primary care cohort of people with HF, those with underweight were at the highest risk of all-cause and cardiovascular mortality. People with overweight, class I or II obesity were at a decreased relative risk of death and HF-related mortality. Our results show that the obesity paradox endures over longer-term follow-up and among patients with HF in community settings.



**Figure 1** Survival over time for people with heart failure, according to their body mass index. The Kaplan-Meier curve shows that the probability of survival is lowest among people with heart failure who are underweight, then people with healthy weight compared with people with overweight or obesity.

**Table 3** HRs and 95% CIs for the association of BMI categories with all-cause mortality among people with heart failure

BMI category	N	n	Crude model		Age and sex adjusted		N*	n*	Multivariable model†	
Underweight (<18.5 kg/m <sup>2</sup> )	1084	756	1.59	(1.48 to 1.71)	1.52	(1.41 to 1.64)	681	446	1.59	(1.45 to 1.75)
Healthy weight (18.5–25 kg/m <sup>2</sup> )	14880	8959	1.00	(Reference)	1.00	(Reference)	10223	5579	1.00	(Reference)
Overweight (25–30 kg/m <sup>2</sup> )	17277	8939	0.74	(0.72 to 0.76)	0.81	(0.79 to 0.84)	13071	6054	0.78	(0.75 to 0.81)
Obesity class I (30–35 kg/m <sup>2</sup> )	9013	4197	0.64	(0.62 to 0.66)	0.79	(0.76 to 0.82)	7235	3045	0.76	(0.73 to 0.80)
Obesity class II (35–40 kg/m <sup>2</sup> )	3400	1417	0.56	(0.53 to 0.59)	0.78	(0.74 to 0.82)	2904	1123	0.76	(0.71 to 0.81)
Obesity class III (≥40 kg/m <sup>2</sup> )	1877	745	0.56	(0.52 to 0.60)	0.95	(0.88 to 1.02)	1614	594	0.96	(0.88 to 1.05)

\*The numbers at risk and dying are smaller in the multivariable model due to missing data.

†Adjusted for sex, age, smoking status, index of multiple deprivation, ethnicity, systolic and diastolic blood pressure, total cholesterol, and history of atrial fibrillation, angina, type 2 diabetes mellitus, hypertension, ischaemic heart disease, myocardial infarction, stroke, valvular heart disease and other cardiovascular diseases. BMI, body mass index; N, number at risk of dying within the relevant BMI category; n, number dying from all-causes for the BMI category.

### Comparison with existing literature

Previous systematic reviews consistently report that people with HF and obesity or overweight were at decreased risk of all-cause and cardiovascular mortality compared with healthy weight.<sup>6,15,16</sup> However, these studies rely on data from secondary care or trial participants, typically with relatively short-term follow-up and younger participants (mean age 54–72 years) than our real-world primary care study (76.6 years).<sup>16,17</sup> We found that a similar association is seen over extended follow-up among older people with chronic HF. The previous reviews have found only limited data with regard to cardiovascular mortality in people with overweight.<sup>6</sup>

Our age-specific results showed that survival rates were lower for people who were underweight, irrespective of age (online supplemental table 3). In contrast, an individual patient data analysis including 6000 patients with chronic HF reported that the increased risk of all-cause mortality among people with underweight or healthy BMI was only seen in patients aged ≥75 years with at least one co-morbidity.<sup>18</sup> The authors concluded that lower BMI may be a marker of advanced HF or cardiac cachexia and a poor prognostic indicator in older people only.<sup>18</sup> This study relied on patients in clinical trials with a younger

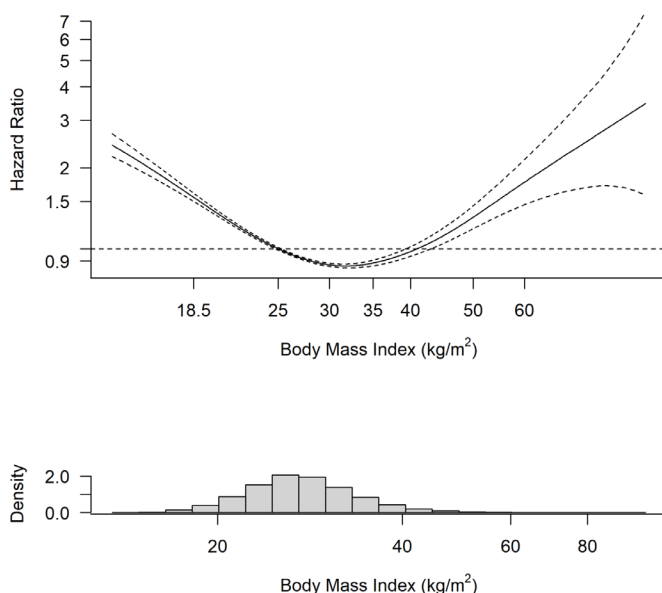
mean age (65 years (SD 12)) than is typical in HF. In contrast, our cohort was older and the inverse relationship seen between weight status and survival is likely to be generalisable to the majority of patients with HF.

### Strengths and limitations

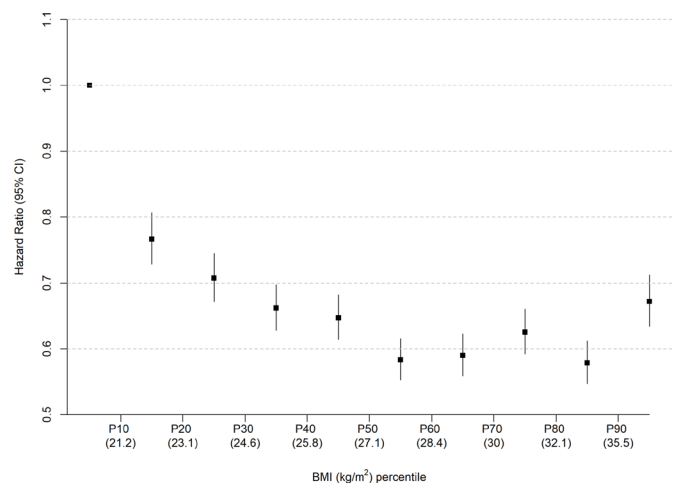
To our knowledge, this is the first study conducted in primary care to report long-term survival rates among people with HF in relation to their BMI. Our analysis draws on a large cohort of patients and is likely to be broadly representative of people with HF living in high-income countries.

We chose to use the most recent BMI prior to HF diagnosis because this provided a time point that was comparable for all patients in their disease course. However, height and weight are inconsistently recorded in primary care with a clustering of weight recordings expected in women, younger and older adults, those with low or high BMI and in people with relevant comorbid health conditions.<sup>19</sup> Missing data may not have been missing at random and people with healthy weight may be under-represented.

BMI has been criticised as a poor measure of weight status as it does not differentiate between adipose tissue, lean muscle mass or weight gain due to oedema, which may be of particular importance in a population with HF. A recent UK Biobank study found that low BMI (<18.5 kg/m<sup>2</sup>) was associated with an increased



**Figure 2** Relationship between BMI and all-cause mortality among people with heart failure. The modelled penalised spline regression demonstrates a U-shaped relationship between BMI and risk of all-cause mortality among people with heart failure. Dotted lines denote the 95% CIs. BMI, body mass index.



**Figure 3** Association of BMI categories by deciles with all-cause mortality. HR and 95% CI for the association between deciles of BMI category and all-cause mortality among people with heart failure. People with overweight or class I obesity are at lowest risk, while people in the lowest weight decile have the highest risk of death. BMI, body mass index.

risk of incident CVD compared with a log-linear association for other measures of adiposity, such as waist circumference or percentage body fat mass.<sup>20</sup> The authors suggest that this may be because the association between health status and BMI is more prone to confounding or reverse causality.<sup>20</sup> Nonetheless, BMI is widely seen as a reliable marker of percentage body fat across populations and alternative measures, such as waist circumference, are rarely coded in primary care.<sup>21</sup> We tested for the existence of reverse causality by repeating the primary analysis after excluding deaths occurring close to the time of BMI measurement. Underweight was only associated with an increased risk of death if the most recent BMI measurement was made within 2 years of death, suggesting that cachexia at the end of life is important rather than underweight in earlier life. However, there were only small numbers of participants in these subgroups and it is difficult to draw definite conclusions. In contrast, the reduced risk of death in people with overweight or obesity class I was robust to the time between weight measurement and death.

Data were only available on the most recent BMI measure and so we were not able to analyse changes in BMI, nor the duration of overweight or obesity, even though these factors may impact on the risk of mortality. Misclassification by BMI is also possible in participants whose weight changed significantly over time. Residual confounding related to factors not well coded in the EHR cannot be excluded, such as cardiorespiratory fitness levels.<sup>22</sup> Results are not adjusted for treatment effect or aetiology of HF, though the prognostic significance of these factors are not known to be altered by weight status.<sup>23</sup>

The recording of HF in primary care rarely categorises the left ventricular ejection fraction, and it was therefore not possible to explore the relevance of this in relation to survival. This may be important as increasing BMI is associated with a greater risk of developing heart failure with preserved ejection fraction (HFpEF) as opposed to heart failure with reduced ejection fraction (HFrEF),<sup>9</sup> though an association between reduced mortality and increased body weight has been reported among populations with both HFrEF<sup>24</sup> and HFpEF.<sup>25</sup>

### Implications for practice and future research

The mechanism of the obesity paradox remains unclear. It has been postulated that people with obesity may benefit from greater metabolic reserves or an attenuated response of the renin-angiotensin-aldosterone system.<sup>8</sup> People with obesity typically have higher arterial blood pressure, which might mean higher doses of medications are tolerated that confer a prognostic benefit in HF.<sup>8</sup>

Clinicians may need to adopt a tailored approach to discussing weight management in HF, accounting for baseline BMI. Previous research suggests that the obesity paradox only exists among people with poor cardiorespiratory fitness,<sup>8,26</sup> and small amounts of weight loss and improvements in fitness levels may improve outcomes in HF.<sup>27</sup> Weight management programmes for people with HFpEF and obesity have been shown to improve exercise capacity and overall quality of life.<sup>28</sup> Furthermore, increasing BMI is independently associated with risk of HF hospitalisation among people with HFpEF.<sup>29</sup> There remains a need for further research into the role of intentional weight loss in people with HF to determine the impact this may have on symptoms and quality of life as well as survival.<sup>27</sup>

Clinicians should recognise that cachexia and low BMI, particularly in the context of clinical frailty, are likely to be markers of poor prognosis in people with HF. Prevalence of frailty is far higher among people with HF compared with the age-matched

population, and the presence of frailty and HF are associated with an 80% higher risk of all-cause mortality.<sup>30</sup> A multidisciplinary approach including physical rehabilitation and support for diet and nutrition may be helpful for this cohort of patients.

### CONCLUSIONS

In this large, long-term primary care cohort study, we observed a U-shaped relationship between BMI and HF mortality. People with overweight and class I or II obesity were at the lowest risk, supporting previous findings of an 'obesity paradox' for HF survival in relation to body weight. In contrast, the relatively small number of people with underweight were at the greatest risk of death and should be identified as such by clinicians. Further research is needed to inform recommendations around the possible benefits of intentional weight loss for patients with HF.

**Twitter** Nicholas R Jones @dnrjones and Clare J Taylor @clarejtaylor

**Acknowledgements** The SurviveHF protocol was approved by the Independent Scientific Advisory Committee to the Medicine and Healthcare products Regulatory Agency (protocol number 18\_061R). This work uses data provided by patients and collected by the NHS as part of their care and support and would not have been possible without access to these data. The National Institute for Health Research recognises and values the role of patient data, securely accessed and stored, in underpinning and leading to improvements in research and care. HES and ONS data are subject to copyright (2018) and can be re-used with the permission of The Health and Social Care Information Centre. All rights reserved.

**Contributors** CJT, RH and NRJ conceived the study. CJT, NRJ and JMO-M designed the study. JMO-M led the statistical analysis plan, with input from AKR and KT. CG helped with the literature review and provided clinical input. NRJ wrote the first draft of the manuscript and is the guarantor for the study. All authors inputted on writing the manuscript and approved the final version.

**Funding** The study was funded by the National Institute for Health Research (NIHR) Collaboration for Leadership in Applied Health Research and Care (CLAHRC) Oxford. The funders did not have any role in the design of the study, analysis and interpretation of the data, or writing of the results for publication. NRJ and CG are supported by grants from the Wellcome Trust (grant number 203921/Z/16/Z). JMOM, AKR and RH are supported by the NIHR Applied Research Collaborative (ARC) Oxford Thames Valley. CJT is an NIHR Academic Clinical Lecturer.

**Disclaimer** The views expressed are those of the authors and not necessarily those of the NHS, the NIHR, or the Department of Health and Social Care.

**Competing interests** CJT reports personal fees and non-financial support from Roche outside the submitted work. All other authors report no conflicts of interest.

**Patient and public involvement** Patients and/or the public were involved in the design, or conduct, or reporting, or dissemination plans of this research. Refer to the Methods section for further details.

**Patient consent for publication** Not applicable.

**Ethics approval** Not applicable.

**Provenance and peer review** Not commissioned; externally peer reviewed.

**Data availability statement** Data may be obtained from a third party and are not publicly available. Data for this study were obtained from the Clinical Practice Research Datalink.

**Author note** An abstract of this work was presented at the European Society of Cardiology Congress, Barcelona 2022 and published in the European Heart Journal ([https://academic.oup.com/eurheartj/article/43/Supplement\\_2/ehac544.894/6743746](https://academic.oup.com/eurheartj/article/43/Supplement_2/ehac544.894/6743746)).

**Supplemental material** This content has been supplied by the author(s). It has not been vetted by BMJ Publishing Group Limited (BMJ) and may not have been peer-reviewed. Any opinions or recommendations discussed are solely those of the author(s) and are not endorsed by BMJ. BMJ disclaims all liability and responsibility arising from any reliance placed on the content. Where the content includes any translated material, BMJ does not warrant the accuracy and reliability of the translations (including but not limited to local regulations, clinical guidelines, terminology, drug names and drug dosages), and is not responsible for any error and/or omissions arising from translation and adaptation or otherwise.

**Open access** This is an open access article distributed in accordance with the Creative Commons Attribution 4.0 Unported (CC BY 4.0) license, which permits



others to copy, redistribute, remix, transform and build upon this work for any purpose, provided the original work is properly cited, a link to the licence is given, and indication of whether changes were made. See: <https://creativecommons.org/licenses/by/4.0/>.

#### ORCID iDs

Nicholas R Jones <http://orcid.org/0000-0002-0352-3785>  
 Clare R Goyder <http://orcid.org/0000-0002-7461-9661>  
 FD Richard Hobbs <http://orcid.org/0000-0001-7976-7172>  
 Clare J Taylor <http://orcid.org/0000-0001-8926-2581>

#### REFERENCES

- van Riet EES, Hoes AW, Wagenaar KP, *et al*. Epidemiology of heart failure: the prevalence of heart failure and ventricular dysfunction in older adults over time. A systematic review. *Eur J Heart Fail* 2016;18:242–52.
- Jones NR, Roalfe AK, Adoki I, *et al*. Survival of patients with chronic heart failure in the community: a systematic review and meta-analysis. *Eur J Heart Fail* 2019;21:1306–25.
- Taylor CJ, Ordóñez-Mena JM, Roalfe AK, *et al*. Trends in survival after a diagnosis of heart failure in the United Kingdom 2000–2017: population based cohort study. *BMJ* 2019;364:l223.
- World Health Organisation. Obesity and overweight. 2021. Available: <https://www.who.int/news-room/fact-sheets/detail/obesity-and-overweight> [Accessed 11 Jan 2022].
- Hu G, Jousilahti P, Antikainen R, *et al*. Joint effects of physical activity, body mass index, waist circumference, and waist-to-hip ratio on the risk of heart failure. *Circulation* 2010;121:237–44.
- Mahajan R, Stokes M, Elliott A, *et al*. Complex interaction of obesity, intentional weight loss and heart failure: a systematic review and meta-analysis. *Heart* 2020;106:58–68.
- Loehr LR, Rosamond WD, Poole C, *et al*. Association of multiple Anthropometrics of overweight and obesity with incident heart failure: the Atherosclerosis risk in communities study. *Circ Heart Fail* 2009;2:18–24.
- Lavie CJ, Alpert MA, Arena R, *et al*. Impact of obesity and the obesity paradox on prevalence and prognosis in heart failure. *JACC Heart Fail* 2013;1:93–102.
- Vergaro G, Gentile F, Meems LMG, *et al*. NT-proBNP for risk prediction in heart failure: identification of optimal cutoffs across body mass index categories. *JACC Heart Fail* 2021;9:653–63.
- Obesity: preventing and managing the global epidemic. report of a WHO consultation. *World Health Organ Tech Rep Ser* 2000;894:i–xii.
- Caleyachetty R, Barber TM, Mohammed NI, *et al*. Ethnicity-specific BMI cutoffs for obesity based on type 2 diabetes risk in England: a population-based cohort study. *Lancet Diabetes Endocrinol* 2021;9:419–26.
- Sterne JAC, White IR, Carlin JB, *et al*. Multiple imputation for missing data in Epidemiological and clinical research: potential and pitfalls. *BMJ* 2009;338:b2393.
- Therneau TM. A package for survival analysis in R. 2022. Available: <https://CRAN.R-project.org/package=survival>
- Kassambara A, Kosinski M, Biecek P. Drawing survival curves using ‘ggplot2’ 2021. Available: <https://CRAN.R-project.org/package=survminer>
- Oga EA, Eseyin OR. The obesity paradox and heart failure: a systematic review of a decade of evidence. *J Obes* 2016;2016:9040248.
- Sharma A, Lavie CJ, Borer JS, *et al*. Meta-analysis of the relation of body mass index to all-cause and cardiovascular mortality and hospitalization in patients with chronic heart failure. *Am J Cardiol* 2015;115:1428–34.
- Zhang J, Begley A, Jackson R, *et al*. Body mass index and all-cause mortality in heart failure patients with normal and reduced ventricular ejection fraction: a dose-response meta-analysis. *Clin Res Cardiol* 2019;108:119–32.
- Marcks N, Aimo A, Januzzi JL Jr, *et al*. Re-appraisal of the obesity paradox in heart failure: a meta-analysis of individual data. *Clin Res Cardiol* 2021;110:1280–91.
- Nicholson BD, Aveyard P, Bankhead CR, *et al*. Determinants and extent of weight recording in UK primary care: an analysis of 5 million adults’ electronic health records from 2000 to 2017. *BMC Med* 2019;17:222.
- Iliodromiti S, Celis-Morales CA, Lyall DM, *et al*. The impact of confounding on the associations of different Adiposity measures with the incidence of cardiovascular disease: a cohort study of 296 535 adults of white European descent. *Eur Heart J* 2018;39:1514–20.
- Powell-Wiley TM, Poirier P, Burke LE, *et al*. Obesity and cardiovascular disease: a scientific statement from the American Heart Association. *Circulation* 2021;143:e984–1010.
- Oktay AA, Lavie CJ, Kokkinos PF, *et al*. The interaction of cardiorespiratory fitness with obesity and the obesity paradox in cardiovascular disease. *Prog Cardiovasc Dis* 2017;60:30–44.
- Bhatt AS, Cooper LB, Ambrosy AP, *et al*. Interaction of body mass index on the association between N-terminal-pro-B-type natriuretic peptide and morbidity and mortality in patients with acute heart failure: findings from ASCEND-HF (acute study of clinical effectiveness of Nesiritide in decompensated heart failure). *J Am Heart Assoc* 2018;7:e006740.
- Kenchaiah S, Pocock SJ, Wang D, *et al*. Body mass index and prognosis in patients with chronic heart failure: insights from the Candesartan in heart failure: assessment of reduction in mortality and morbidity (CHARM) program. *Circulation* 2007;116:627–36.
- Sharma K, Mok Y, Kwak L, *et al*. Predictors of mortality by sex and race in heart failure with preserved ejection fraction: ARIC community surveillance study. *JAHA* 2020;9:19.
- Clark AL, Fonarow GC, Horwich TB. Impact of cardiorespiratory fitness on the obesity paradox in patients with systolic heart failure. *Am J Cardiol* 2015;115:209–13.
- Elagizi A, Carbone S, Lavie CJ, *et al*. Implications of obesity across the heart failure continuum. *Prog Cardiovasc Dis* 2020;63:561–9.
- El Hajj EC, El Hajj MC, Sykes B, *et al*. Pragmatic weight management program for patients with obesity and heart failure with preserved ejection fraction. *J Am Heart Assoc* 2021;10:e022930.
- Mandviwala TM, Basra SS, Khalid U, *et al*. Obesity and the paradox of mortality and heart failure hospitalization in heart failure with preserved ejection fraction. *Int J Obes (Lond)* 2020;44:1561–7.
- Pandey A, Kitzman D, Reeves G. Frailty is intertwined with heart failure: mechanisms, prevalence, prognosis, assessment, and management. *JACC Heart Fail* 2019;7:1001–11.

**Supplemental Table 1** Baseline characteristics of people with heart failure and available or missing BMI measurement.

Variable	With BMI (n=47531)	Without BMI (n=8428)
<b>Gender, n (%)</b>		
Men	25755 (54.19)	3479 (41.28)
Women	21776 (45.81)	4949 (58.72)
<b>Age (years), median (IQR)</b>	78 (70 - 84)	82 (74 - 88)
<b>Age category, n (%)</b>		
45-54	1664 (3.50)	274 (3.25)
55-64	4809 (10.12)	617 (7.32)
65-74	11189 (23.54)	1296 (15.38)
75-84	18596 (39.12)	2938 (34.86)
85-94	10574 (22.25)	2879 (34.16)
94+	699 (1.47)	424 (5.03)
<b>Ethnicity, n (%)</b>		
White	37537 (78.97)	6606 (78.38)
Non-white	1348 (2.84)	149 (1.77)
Mixed	6078 (12.79)	507 (6.02)
Missing	2568 (5.40)	1166 (13.83)
<b>Smoking Status, n (%)</b>		
Never	18106 (38.09)	3146 (37.33)
Former	6152 (12.94)	942 (11.18)
Current	22751 (47.87)	1756 (20.84)
Missing	522 (1.10)	2584 (30.66)
<b>Index of multiple deprivation (quintile), n (%)</b>		
1 (most deprived)	9244 (19.45)	1610 (19.10)
2	10854 (22.84)	2100 (24.92)
3	10177 (21.41)	1770 (21.00)
4	10038 (21.12)	1669 (19.80)
5 (least deprived)	7175 (15.10)	1272 (15.09)
Missing	43 (0.09)	7 (0.08)
<b>Medical history of</b>		
Atrial Fibrillation, n (%)	12980 (27.31)	1649 (19.57)
Angina, n (%)	10871 (22.87)	1094 (12.98)
Diabetes, n (%)	12425 (26.14)	679 (8.06)
Hypertension, n (%)	29052 (61.12)	3264 (38.73)
Ischaemic Heart Disease, n (%)	13196 (27.76)	1410 (16.73)
Myocardial infarction, n (%)	10271 (21.61)	1025 (12.16)
Other Cardiovascular disease, n (%)	12166 (25.60)	1591 (18.88)
Stroke, n (%)	5432 (11.43)	839 (9.95)
Valvular disease, n (%)	3736 (7.86)	418 (4.96)
<b>BMI (kg/m<sup>2</sup>)</b>	27.06 (23.88 - 31)	n/a
<b>Systolic blood pressure (mmHg)</b>		
Missing	212 (0.45)	1060 (12.58)

<b>Diastolic blood pressure (mmHg)</b>	78 (70 - 83)	80 (70 - 85)
Missing	212 (0.45)	1060 (12.58)
<b>Total cholesterol (mmol/L)</b>	4.5 (3.8 - 5.4)	4.9 (4.1 - 5.8)
Missing	10140 (21.33)	5338 (63.34)

**Abbreviations:** BMI: body mass index; IQR: interquartile range

**Supplemental Table 2** Age-adjusted survival rates at 1,5, 10, and 15 years after a diagnosis of heart failure stratified by BMI category.

BMI category:	Age-adjusted survival rate (% (95% CI))			
	1 year	5 years	10 years	15 years
Underweight	67.26 (65.31 to 69.21)	28.1 (25.52 to 30.68)	7.6 (6.16 to 9.04)	1.42 (0.92 to 1.91)
Healthy weight	77.02 (76.48 to 77.55)	43.35 (42.49 to 44.21)	18.33 (17.51 to 19.15)	6.06 (5.3 to 6.83)
Overweight	80.88 (80.42 to 81.34)	50.7 (49.91 to 51.49)	25.19 (24.3 to 26.07)	10.25 (9.21 to 11.29)
Obesity class I	81.43 (80.86 to 82.01)	51.82 (50.74 to 52.9)	26.33 (25.15 to 27.51)	11.03 (9.82 to 12.24)
Obesity class II	81.6 (80.7 to 82.51)	52.17 (50.37 to 53.97)	26.69 (24.77 to 28.6)	11.28 (9.66 to 12.9)
Obesity class III	78.07 (76.64 to 79.49)	45.27 (42.66 to 47.89)	20.02 (17.63 to 22.4)	7.01 (5.46 to 8.56)

**Abbreviations:** BMI: body mass index

**Supplemental Table 3** Survival rates at 1, 5, 10, and 15 years after a diagnosis of heart failure stratified by age and BMI category

Subgroup	Survival rate (% (95% CI))			
	At 1 year	At 5 years	At 10 years	At 15 years
45-54 years	90.3 (88.97 to 91.65)	78.45 (76.36 to 80.6)	64.73 (61.61 to 68.01)	54.44 (49.98 to 59.3)
By BMI category:				
Underweight	87.84 (73.37 to 100)	60.39 (32.56 to 100)	40.26 (14.65 to 100)	NA
Healthy weight	88.67 (85.2 to 92.28)	75.48 (70.23 to 81.11)	61.43 (53.88 to 70.04)	50.46 (40.53 to 62.82)
Overweight	91.53 (89.16 to 93.96)	82.41 (78.82 to 86.16)	69.38 (63.56 to 75.73)	57.22 (48.28 to 67.81)
Obesity class I	91.27 (88.46 to 94.17)	80.89 (76.49 to 85.53)	68.99 (62.28 to 76.42)	63.02 (54.44 to 72.95)
Obesity class II	90.9 (86.97 to 95.01)	76.34 (69.8 to 83.5)	61.99 (52.35 to 73.39)	51.88 (39.79 to 67.65)
Obesity class III	89.71 (85.42 to 94.21)	74.87 (67.48 to 83.08)	57.47 (47.2 to 69.99)	57.47 (47.2 to 69.99)
55-64 years	87.88 (87 to 88.77)	70.63 (69.27 to 72.01)	52.78 (50.93 to 54.7)	38.43 (35.56 to 41.53)
By BMI category:				
Underweight	69.84 (59.34 to 82.18)	47.77 (36.02 to 63.34)	30.98 (18.34 to 52.32)	30.98 (18.34 to 52.32)
Healthy weight	83.94 (81.64 to 86.3)	65.77 (62.54 to 69.16)	49.72 (45.62 to 54.18)	36.59 (30.74 to 43.55)
Overweight	88.82 (87.21 to 90.45)	74.97 (72.54 to 77.49)	56.27 (52.71 to 60.07)	42.09 (36.38 to 48.69)
Obesity class I	90.27 (88.54 to 92.03)	72.79 (69.89 to 75.8)	56.05 (52.12 to 60.29)	45.62 (40.37 to 51.56)
Obesity class II	92.49 (90.38 to 94.65)	73.23 (69.21 to 77.47)	51.09 (45.05 to 57.93)	27.66 (17.74 to 43.14)
Obesity class III	89.26 (86.59 to 92.01)	68.18 (63.64 to 73.05)	49.56 (43.41 to 56.58)	25.84 (17.1 to 39.06)
65-74 years	83.45 (82.79 to 84.12)	59.08 (58.12 to 60.06)	35.38 (34.2 to 36.61)	17.23 (15.48 to 19.17)
By BMI category:				
Underweight	59.68 (52.53 to 67.8)	29.22 (22.18 to 38.51)	21.74 (15.07 to 31.36)	21.74 (15.07 to 31.36)
Healthy weight	78.11 (76.53 to 79.73)	53.29 (51.19 to 55.47)	31.78 (29.33 to 34.43)	15.37 (11.9 to 19.86)
Overweight	85.79 (84.7 to 86.89)	61.49 (59.81 to 63.22)	37.88 (35.8 to 40.09)	16.45 (13.34 to 20.28)
Obesity class I	86.58 (85.26 to 87.93)	62.81 (60.71 to 64.99)	36.43 (33.67 to 39.41)	17.89 (14.43 to 22.19)
Obesity class II	87.32 (85.38 to 89.31)	65.26 (62.15 to 68.52)	38.79 (34.63 to 43.44)	24.89 (18.71 to 33.12)
Obesity class III	85.68 (82.98 to 88.47)	57.37 (52.93 to 62.2)	32.14 (26.31 to 39.25)	13.39 (6.27 to 28.59)
75-84 years	76.54 (75.97 to 77.12)	43.2 (42.43 to 43.97)	18.37 (17.56 to 19.21)	5.83 (4.85 to 7.01)
By BMI category:				
Underweight	59.85 (55.21 to 64.88)	24.7 (20.24 to 30.15)	7.46 (4.06 to 13.68)	NA
Healthy weight	73.04 (71.9 to 74.2)	38.81 (37.39 to 40.28)	15.28 (13.91 to 16.78)	4.8 (3.36 to 6.85)
Overweight	79.61 (78.66 to 80.57)	46.9 (45.57 to 48.27)	20.7 (19.21 to 22.3)	7.3 (5.23 to 10.18)

Obesity class I	81.68 (80.38 to 83)	48.42 (46.48 to 50.44)	21.49 (19.26 to 23.98)	6.91 (4.38 to 10.91)
Obesity class II	81.26 (78.97 to 83.62)	51 (47.6 to 54.64)	24.32 (20.28 to 29.16)	8.24 (3.84 to 17.68)
Obesity class III	82.25 (78.64 to 86.02)	45.25 (39.57 to 51.75)	21.57 (15.33 to 30.34)	NA
85-94 years	63.22 (62.38 to 64.06)	22.26 (21.37 to 23.18)	4.41 (3.76 to 5.18)	0.23 (0.04 to 1.38)
By BMI category:				
Underweight	47.8 (42.89 to 53.27)	13.88 (9.97 to 19.32)	NA	NA
Healthy weight	61.49 (60.06 to 62.97)	20.56 (19.08 to 22.15)	5.03 (3.87 to 6.53)	0.74 (0.15 to 3.77)
Overweight	68.52 (67.02 to 70.04)	25.45 (23.71 to 27.31)	4.95 (3.65 to 6.7)	NA
Obesity class I	69.03 (66.5 to 71.66)	30.48 (27.4 to 33.91)	6.29 (3.89 to 10.17)	NA
Obesity class II	67.43 (61.97 to 73.37)	28.8 (22.43 to 36.96)	6.56 (2.46 to 17.52)	NA
Obesity class III	73.33 (63.35 to 84.87)	15.93 (7.22 to 35.14)	NA	NA
94+ years	43.9 (40.95 to 47.05)	6.03 (4.38 to 8.29)	43.9 (40.95 to 47.05)	6.03 (4.38 to 8.29)
By BMI category:				
Underweight	32.29 (18.85 to 55.33)	NA	NA	NA
Healthy weight	45.56 (40.67 to 51.04)	7.99 (4.95 to 12.91)	NA	NA
Overweight	55.41 (48.59 to 63.19)	7.52 (3.72 to 15.2)	NA	NA
Obesity class I	47.76 (35.67 to 63.95)	11.17 (3.78 to 33.06)	NA	NA
Obesity class II	43.96 (23.28 to 83.01)	NA	NA	NA
Obesity class III	NA	NA	NA	NA

**Abbreviations:** BMI: body mass index; N: not available (insufficient data for this analysis)

**Supplemental Table 4** Adjusted hazard Ratios (HR), 95% Confidence Intervals (CI) and the risk difference between BMI categories with all-cause mortality among people with heart failure.\*

BMI Category	Adjusted HR	Absolute Risk	Risk Difference
Healthy weight (reference)	1.00	18.8% (8,959/14,880*100)	-
Overweight	0.78	18.8% * 0.78 = 14.7%	-4.1%
Obesity class I	0.76	18.8% * 0.76 = 14.3%	-4.5%
Obesity class II	0.76	18.8% * 0.76 = 14.3%	-4.5%
Obesity class III	0.96	18.8% * 0.96 = 18.1%	-0.7%
Underweight	1.59	18.8% * 1.59 = 30.0%	11.2%

Among participants with Heart Failure and healthy weight (n = 14,880), 18.8% (n = 8,959) died during follow-up. Risk differences calculated using the adjusted hazard ratios reported in Table 3.

\* Adjusted for age, smoking status, index of multiple deprivation, ethnicity, systolic and diastolic blood pressure, total cholesterol, and history of atrial fibrillation, angina, diabetes, hypertension, ischaemic heart disease, myocardial infarction, stroke, valvular heart disease, and other cardiovascular diseases.

**Supplemental Table 5** Hazard Ratios (HR) and 95% Confidence Intervals (CI) for the association of BMI categories with all-cause mortality among men and women with heart failure.\*

BMI Category	Men			Women			P-value interaction
	N	n	HR (95% CI)	N	n	HR (95% CI)	
Underweight (<18.5 kg/m <sup>2</sup> )	209	149	1.90 (1.61 to 2.24)	472	297	1.48 (1.31 to 1.67)	0.02
Healthy weight (18.5-25 kg/m <sup>2</sup> )	5340	2998	1.00 (Reference)	4883	2581	1.00 (Reference)	-
Overweight (25-30 kg/m <sup>2</sup> )	8255	3855	0.77 (0.73 to 0.81)	4816	2199	0.79 (0.75 to 0.84)	0.42
Obesity class I (30-35 kg/m <sup>2</sup> )	4247	1789	0.76 (0.71 to 0.81)	2988	1256	0.77 (0.72 to 0.83)	0.57
Obesity class II (35-40 kg/m <sup>2</sup> )	1490	569	0.77 (0.7 to 0.85)	1414	554	0.75 (0.68 to 0.82)	0.72
Obesity class III (≥40 kg/m <sup>2</sup> )	676	216	0.91 (0.79 to 1.05)	938	378	0.97 (0.87 to 1.09)	0.31

**Abbreviations:** N: number at risk of dying within the relevant BMI category; n: number dying from all-causes for the BMI category.

\* Adjusted for age, smoking status, index of multiple deprivation, ethnicity, systolic and diastolic blood pressure, total cholesterol, and history of atrial fibrillation, angina, diabetes, hypertension, ischaemic heart disease, myocardial infarction, stroke, valvular heart disease, and other cardiovascular diseases.



**Supplemental Table 6** Hazard Ratios (HR) and 95% Confidence Intervals (CI) for the association of BMI categories with all-cause mortality among people with heart failure and white, non-white or mixed ethnicity.

Category	White			Non-white				Mixed			p*
	N	n	HR (95% CI)	N	n	HR (95% CI)	N	n	HR (95% CI)		
Underweight	565	379	<b>1.57 (1.41 to 1.75)</b>	12	5	1.59 (0.64 to 3.95)	0.83	104	62	<b>1.76 (1.35 to 2.29)</b>	0.51
Healthy weight	8416	4763	1.00 (Reference)	331	143	1.00 (Reference)	-	1476	673	1.00 (Reference)	-
Overweight	10700	5211	<b>0.78 (0.75 to 0.81)</b>	429	170	0.89 (0.71 to 1.11)	0.32	1942	673	<b>0.75 (0.67 to 0.83)</b>	0.20
Obesity class I	5799	2552	<b>0.75 (0.72 to 0.79)</b>	273	88	<b>0.68 (0.51 to 0.89)</b>	0.56	1163	405	<b>0.87 (0.76 to 0.99)</b>	0.56
Obesity class II	2340	934	<b>0.73 (0.67 to 0.78)</b>	103	39	1.10 (0.76 to 1.59)	0.03	461	150	1.02 (0.85 to 1.23)	0.12
Obesity class III	1306	514	0.94 (0.85 to 1.03)	51	14	0.64 (0.36 to 1.14)	0.52	257	66	1.11 (0.86 to 1.45)	0.61

**Abbreviations:** BMI: body mass index; HR: hazard ratio; N: number at risk of dying from CVD within the relevant BMI category; n: number dying from CVD for the BMI category.

\* p-value for interaction

**Supplemental Table 7** Sensitivity analysis comparing different approaches to handling missing data in the primary analysis, in which we report the Hazard Ratios (HR) and 95% Confidence Intervals (CI) for the association of BMI categories with all-cause mortality among people with heart failure.

Category	Adjusted HR (95% CI)			
	Complete case analysis (n = 35,728) <sup>a</sup>	Missing indicator analysis (n = 37,278) <sup>b</sup>	Excluding total cholesterol (n = 44,280) <sup>c</sup>	Multiple imputation (n = 47,531) <sup>d</sup>
<b>Underweight</b>	<b>1.59 (1.45 to 1.75)</b>	<b>1.57 (1.43 to 1.73)</b>	<b>1.56 (1.44 to 1.68)</b>	<b>1.51 (1.40 to 1.63)</b>
<b>Healthy weight</b>	1.00 (Reference)	1.00 (Reference)	1.00 (Reference)	1.00 (Reference)
<b>Overweight</b>	<b>0.78 (0.75 to 0.81)</b>	<b>0.79 (0.76 to 0.82)</b>	<b>0.80 (0.77 to 0.82)</b>	<b>0.79 (0.77 to 0.82)</b>
<b>Obesity class I</b>	<b>0.76 (0.73 to 0.80)</b>	<b>0.77 (0.74 to 0.81)</b>	<b>0.77 (0.74 to 0.81)</b>	<b>0.77 (0.75 to 0.80)</b>
<b>Obesity class II</b>	<b>0.76 (0.71 to 0.81)</b>	<b>0.77 (0.72 to 0.82)</b>	<b>0.77 (0.73 to 0.82)</b>	<b>0.76 (0.72 to 0.81)</b>
<b>Obesity class III</b>	0.96 (0.88 to 1.05)	0.97 (0.89 to 1.06)	0.96 (0.89 to 1.04)	0.95 (0.88 to 1.03)

**Abbreviations:** n: number of participants included in analysis.

<sup>a</sup> Excluded those with missing information on ethnicity, smoking status, index of multiple deprivation, systolic and diastolic blood pressure, and total cholesterol.

<sup>b</sup> Excluded those with missing data on systolic and diastolic blood pressure, and total cholesterol, and added missing indicator variables for smoking, ethnicity, and index of multiple deprivation.

<sup>c</sup> Did not adjust for total cholesterol, all other covariates were kept the same. Those with missing data on ethnicity, smoking status, index of multiple deprivation, systolic and diastolic blood pressure were excluded.

<sup>d</sup> Adjusted for the same set of variables as in the complete case analyses. Results were pooled across 5 imputed datasets.

**Supplemental Table 8** Hazard ratios and 95% confidence intervals for the association of BMI categories with all-cause mortality among people with heart failure after excluding those dying within 1, 2, 3, 4, and 5 years after the assessment of BMI.\*

Time between BMI assessment and death	Underweight (<18.5 kg/m <sup>2</sup> )	Healthy weight (18.5-25 kg/m <sup>2</sup> )	Overweight (25-30 kg/m <sup>2</sup> )	Obesity class I (30-35 kg/m <sup>2</sup> )	Obesity class II (35-40 kg/m <sup>2</sup> )	Obesity class III (≥40 kg/m <sup>2</sup> )
≥ 1 year	331/171, <b>1.38 (1.19 to 1.62)</b>	6482/2986, 1.00 (Reference)	9403/3782, <b>0.82 (0.78 to 0.86)</b>	5324/1981, <b>0.83 (0.78 to 0.88)</b>	2170/734, <b>0.82 (0.75 to 0.89)</b>	1188/392, 1.10 (0.98 to 1.23)
≥ 2 year	223/112, <b>1.41 (1.16 to 1.71)</b>	4771/2098, 1.00 (Reference)	7410/2887, <b>0.85 (0.81 to 0.90)</b>	4189/1497, <b>0.85 (0.79 to 0.91)</b>	1741/580, <b>0.87 (0.79 to 0.96)</b>	916/292, <b>1.14 (1.00 to 1.30)</b>
≥ 3 year	151/67, 1.27 (0.99 to 1.62)	3548/1510, 1.00 (Reference)	5739/2158, <b>0.86 (0.81 to 0.92)</b>	3302/1161, <b>0.88 (0.81 to 0.95)</b>	1368/437, <b>0.87 (0.78 to 0.97)</b>	685/216, 1.14 (0.98 to 1.33)
≥ 4 year	105/45, 1.27 (0.94 to 1.72)	2640/1086, 1.00 (Reference)	4439/1617, <b>0.88 (0.81 to 0.95)</b>	2548/854, <b>0.88 (0.80 to 0.97)</b>	1084/339, 0.91 (0.80 to 1.03)	531/158, 1.12 (0.94 to 1.34)
≥ 5 year	70/26, 1.09 (0.74 to 1.61)	1959/781, 1.00 (Reference)	3377/1186, <b>0.86 (0.79 to 0.95)</b>	1982/644, 0.89 (0.80 to 1.00)	830/261, 0.93 (0.80 to 1.08)	407/113, 1.08 (0.88 to 1.33)

**Abbreviations:** BMI: body mass index

\* The numbers shown in each cell correspond to the number at risk, number dying, the hazard ratio and its confidence intervals within brackets.

**Supplemental Table 9** Numbers and causes of death of people with heart failure stratified by BMI category.

<b>Causes of death subgroup, n (%)</b>	<b>Underweight (<math>&lt;18.5</math> kg/m<sup>2</sup>)</b>		<b>Healthy weight (18.5-25 kg/m<sup>2</sup>)</b>		<b>Overweight (25-30 kg/m<sup>2</sup>)</b>		<b>Obesity class I (30-35 kg/m<sup>2</sup>)</b>		<b>Obesity class II (35-40 kg/m<sup>2</sup>)</b>		<b>Obesity class III (<math>\geq 40</math> kg/m<sup>2</sup>)</b>	
Total Number of Deaths	756	(100)	8959	(100)	8939	(100)	4197	(100)	1417	(100)	745	(100)
Death due to cardiovascular disease	383	(50.7)	4955	(55.3)	5008	(56.0)	2338	(55.7)	826	(58.3)	403	(54.1)
Heart failure primary cause	63	(8.33)	675	(7.53)	533	(5.96)	278	(6.62)	86	(6.07)	65	(8.72)
Heart failure any cause of death*	347	(45.9)	3891	(43.4)	3659	(40.9)	1774	(42.3)	623	(44.0)	348	(46.7)
Arrhythmias (ICD-10 codes: I47-	20	(2.65)	162	(1.81)	136	(1.52)	59	(1.41)	24	(1.69)	7	(0.94)
Diseases of the respiratory system	196	(25.9)	1526	(17.0)	1334	(14.9)	573	(13.7)	184	(13.0)	111	(14.9)
Cancer	59	(7.80)	1061	(11.8)	1243	(13.9)	615	(14.7)	179	(12.6)	72	(9.66)
Diseases of the digestive system	32	(4.23)	295	(3.29)	333	(3.73)	138	(3.29)	62	(4.38)	33	(4.43)
Diseases of the genitourinary	19	(2.51)	197	(2.20)	222	(2.48)	110	(2.62)	40	(2.82)	24	(3.22)
Other	67	(8.86)	925	(10.3)	799	(8.94)	423	(10.1)	126	(8.89)	102	(13.7)

\* Includes patients for whom heart failure may have been the primary or a contributory cause of death.

**Supplemental Table 10** Hazard ratios and 95% confidence intervals for the association of BMI categories with CVD mortality among people with heart failure.

<b>BMI Category</b>	<b>N</b>	<b>n</b>	<b>Crude model</b>		<b>Age &amp; Sex adjusted</b>		<b>N</b>	<b>n</b>	<b>Multivariable model</b>	
Underweight (<18.5 kg/m <sup>2</sup> )	1084	383	1.41	(1.27 to 1.57)	1.42	(1.28 to 1.57)	681	236	1.51	(1.32 to 1.73)
Healthy weight (18.5-25 kg/m <sup>2</sup> )	14880	4955	1.00	(Reference)	1.00	(Reference)	10223	3096	1.00	(Reference)
Overweight (25-30 kg/m <sup>2</sup> )	17277	5008	0.76	(0.73 to 0.79)	0.82	(0.79 to 0.85)	13071	3387	0.79	(0.75 to 0.83)
Obesity class I (30-35 kg/m <sup>2</sup> )	9013	2338	0.65	(0.62 to 0.69)	0.80	(0.76 to 0.84)	7235	1681	0.77	(0.72 to 0.81)
Obesity class II (35-40 kg/m <sup>2</sup> )	3400	826	0.60	(0.56 to 0.64)	0.85	(0.78 to 0.91)	2904	630	0.78	(0.71 to 0.85)
Obesity class III (≥40 kg/m <sup>2</sup> )	1877	403	0.55	(0.50 to 0.61)	0.97	(0.87 to 1.08)	1614	329	0.97	(0.86 to 1.09)

**Abbreviations:** BMI: body mass index; N: number at risk of dying from CVD within the relevant BMI category; n: number dying from CVD for the BMI category.

\* The numbers at risk and dying from CVD are smaller in the multivariable model due to missing data.

\*\* Adjusted for sex, age, smoking status, index of multiple deprivation, ethnicity, systolic and diastolic blood pressure, total cholesterol, and history of atrial fibrillation, angina, diabetes, hypertension, ischaemic heart disease, myocardial infarction, stroke, valvular heart disease, and other cardiovascular diseases.