

## Antibody-mediated depletion of human CLEC-2 in a novel humanized mouse model

Brown, Helena C.; Beck, Sarah; Navarro, Stefano; Di, Ying; Soriano jerez, Eva M.; Kaczmarzyk, Jana; Thomas, Steven G.; Mirakaj, Valbona; Watson, Steve P.; Nieswandt, Bernhard; Stegner, David

DOI:

[10.1182/bloodadvances.2021006463](https://doi.org/10.1182/bloodadvances.2021006463)

License:

Creative Commons: Attribution-NonCommercial-NoDerivs (CC BY-NC-ND)

*Document Version*

Publisher's PDF, also known as Version of record

*Citation for published version (Harvard):*

Brown, HC, Beck, S, Navarro, S, Di, Y, Soriano jerez, EM, Kaczmarzyk, J, Thomas, SG, Mirakaj, V, Watson, SP, Nieswandt, B & Stegner, D 2023, 'Antibody-mediated depletion of human CLEC-2 in a novel humanized mouse model', *Blood Advances*, vol. 7, no. 6, pp. 997–1000. <https://doi.org/10.1182/bloodadvances.2021006463>

[Link to publication on Research at Birmingham portal](#)

### General rights

Unless a licence is specified above, all rights (including copyright and moral rights) in this document are retained by the authors and/or the copyright holders. The express permission of the copyright holder must be obtained for any use of this material other than for purposes permitted by law.

- Users may freely distribute the URL that is used to identify this publication.
- Users may download and/or print one copy of the publication from the University of Birmingham research portal for the purpose of private study or non-commercial research.
- User may use extracts from the document in line with the concept of 'fair dealing' under the Copyright, Designs and Patents Act 1988 (?)
- Users may not further distribute the material nor use it for the purposes of commercial gain.

Where a licence is displayed above, please note the terms and conditions of the licence govern your use of this document.

When citing, please reference the published version.

### Take down policy

While the University of Birmingham exercises care and attention in making items available there are rare occasions when an item has been uploaded in error or has been deemed to be commercially or otherwise sensitive.

If you believe that this is the case for this document, please contact [UBIRA@lists.bham.ac.uk](mailto:UBIRA@lists.bham.ac.uk) providing details and we will remove access to the work immediately and investigate.

## TO THE EDITOR:

# Antibody-mediated depletion of human CLEC-2 in a novel humanized mouse model

Helena C. Brown,<sup>1,2</sup> Sarah Beck,<sup>1</sup> Stefano Navarro,<sup>1,3</sup> Ying Di,<sup>2</sup> Eva M. Soriano Jerez,<sup>1,4</sup> Jana Kaczmarzyk,<sup>1</sup> Steven G. Thomas,<sup>2,5</sup> Valbona Mirakaj,<sup>6</sup> Steve P. Watson,<sup>2,5</sup> Bernhard Nieswandt,<sup>1</sup> and David Stegner<sup>1</sup>

<sup>1</sup>Institute of Experimental Biomedicine I, University Hospital and Rudolf Virchow Center for Integrative and Translational Bioimaging, University of Wuerzburg, Wuerzburg, Germany; <sup>2</sup>Institute of Cardiovascular Sciences, College of Medical and Dental Sciences, University of Birmingham, Birmingham, United Kingdom; <sup>3</sup>Department of Biochemistry, Cardiovascular Research Institute Maastricht, Maastricht University, Maastricht, The Netherlands; <sup>4</sup>Institute for Cardiovascular and Metabolic Research, University of Reading, Reading, United Kingdom; <sup>5</sup>Centre of Membrane Proteins and Receptors, Universities of Birmingham and Nottingham, The Midlands, United Kingdom; and <sup>6</sup>Division of Molecular Intensive Care Medicine, Department of Anesthesiology and Intensive Care Medicine, Eberhard - Karls University of Tübingen, Tübingen, Germany

C-type lectin-like receptor 2 (CLEC-2) is a unique platelet activation receptor signaling through a single YXXL sequence, representing half of an immunoreceptor tyrosine-based activation motif (hemITAM).<sup>1,2</sup> CLEC-2 and its endogenous ligand podoplanin are crucial for normal development, with mice deficient in either showing defective blood-lymphatic vessel separation.<sup>3-5</sup> This interaction also has a role in tumor metastasis.<sup>6,7</sup>

CLEC-2 is important in thrombosis, particularly in immunothrombosis and smaller vascular beds,<sup>2,8-12</sup> with CLEC-2 deficiency reducing vessel occlusion in several *in vivo* thrombosis models with little effect on hemostasis.<sup>13-15</sup> Occlusion is unaltered in CLEC-2 Y7A signaling null mice, in which the receptor is normally expressed, suggesting that it is the presence of CLEC-2 itself, rather than CLEC-2-induced platelet activation, that has a role in thrombus stability.<sup>14</sup> Furthermore, immunodepletion of CLEC-2 from the platelet surface using the monoclonal antibody INU1 has similar effects on thrombus formation, with depletion lasting up to 6 days and accompanied by transient thrombocytopenia.<sup>8,13</sup>

As a result, CLEC-2 has been suggested as a potential antithrombotic target. However, the *in vivo* role of human CLEC-2 cannot be readily investigated experimentally in humans, meaning there are limited methods to assess the relevance of human CLEC-2 in arterial thrombosis or tools to test potential therapeutics preclinically. In addition, although antibodies against human CLEC-2, such as AYP1,<sup>16</sup> exist, it is unknown if human, like mice, CLEC-2 can be immunodepleted. Here, we have generated a humanized CLEC-2 mouse model that can be used to test potential antihuman CLEC-2 therapeutics *in vivo*.

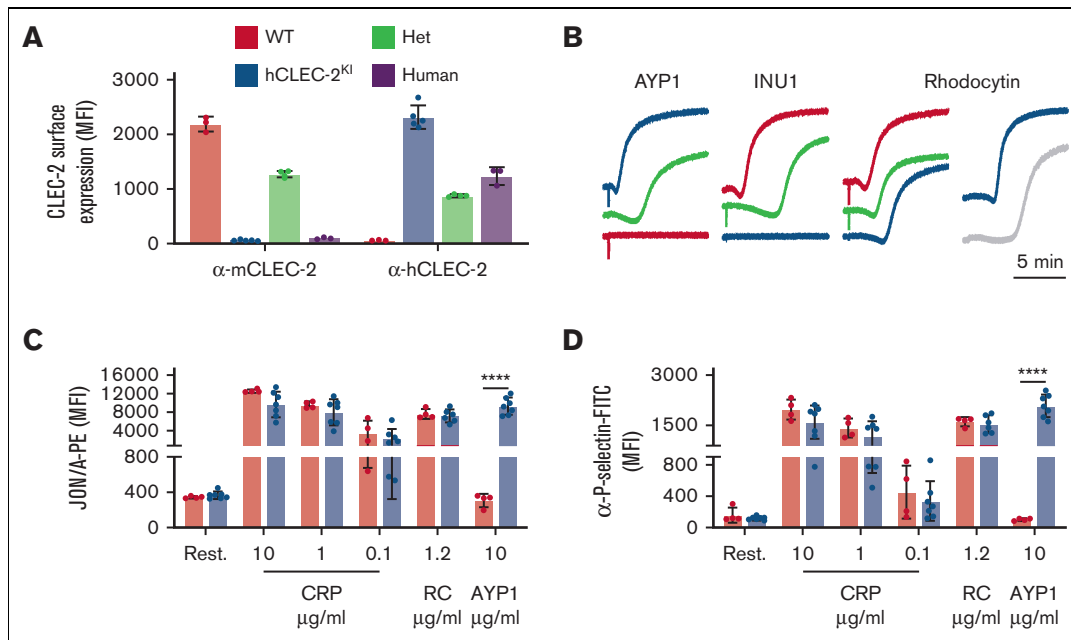
Humanized CLEC-2 (hCLEC-2<sup>KI</sup>) mice were generated using CRISPR to replace the mouse gene with the human variant (supplemental Figure 1). These mice are viable, fertile, and born in the Mendelian ratio (supplemental Table 1). There were no obvious signs of blood lymphatic defects, and both platelet and megakaryocyte counts were comparable to wild-type (WT) mice (supplemental Table 2; supplemental Figure 2). This is in contrast to other mouse lines in which CLEC-2 or podoplanin have been genetically modified<sup>3,4,14</sup> and suggests that human CLEC-2 can compensate for loss of the mouse protein and the interaction with murine podoplanin is sufficient for blood-lymphatic vessel separation. Human but not mouse CLEC-2 could be detected on platelets from hCLEC-2<sup>KI</sup> mice with heterozygotes expressing half each of human and mouse CLEC-2 (Figure 1A; supplemental Figure 3). The surface abundance of CLEC-2 on hCLEC-2<sup>KI</sup> platelets was approximately double that on human platelets (Figure 1A). The surface abundance of all other glycoprotein receptors was comparable to WT platelets (supplemental Table 3) as were platelet activation and aggregation for G protein-coupled receptors and GPVI

Submitted 26 October 2021; accepted 23 August 2022; prepublished online on *Blood Advances* First Edition 31 August 2022; final version published online 17 March 2023. <https://doi.org/10.1182/bloodadvances.2021006463>.

The data that support the plots within this article and other findings of this study are available upon reasonable request from the corresponding author, David Stegner ([stegner@virchow.uni-wuerzburg.de](mailto:stegner@virchow.uni-wuerzburg.de)).

The full-text version of this article contains a data supplement.

© 2023 by The American Society of Hematology. Licensed under [Creative Commons Attribution-NonCommercial-NoDerivatives 4.0 International \(CC BY-NC-ND 4.0\)](https://creativecommons.org/licenses/by-nc-nd/4.0/), permitting only noncommercial, nonderivative use with attribution. All other rights reserved.



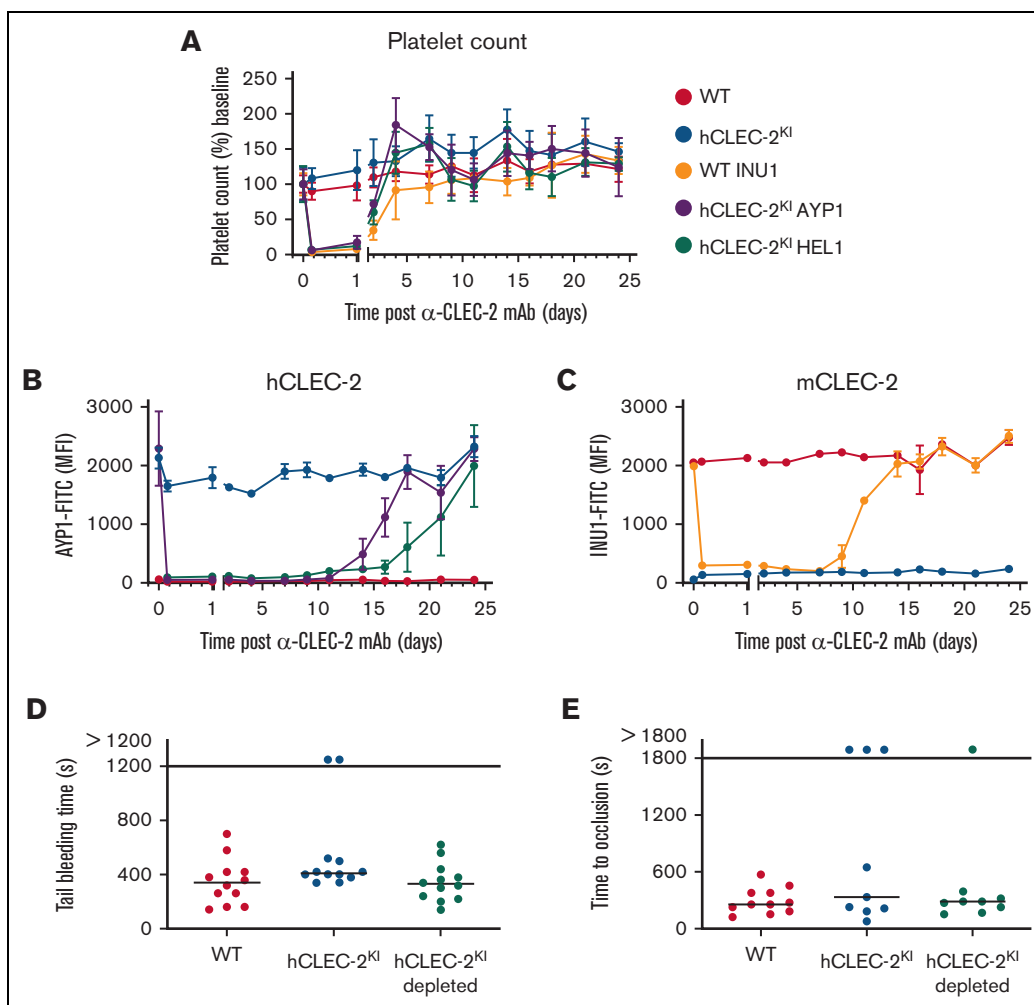
**Figure 1. hCLEC-2<sup>Kl</sup> mice have normal CLEC-2 expression and platelet activation.** (A) Surface expression of mouse and human CLEC-2 by flow cytometry using INU1 and AYP1 antibodies, respectively. Heterozygous mice expressed half human and half mouse CLEC-2, whereas hCLEC-2<sup>Kl</sup> mice expressed only hCLEC-2 on their platelet surface. (B) Light transmission aggregometry with washed platelets shows that AYP1 (10 μg/mL) and INU1 (10 μg/mL) cause aggregation of hCLEC-2<sup>Kl</sup> and WT platelets, respectively, and reduced aggregation in hCLEC-2<sup>Kl</sup> heterozygous platelets. RC-induced (0.24 μg/mL) aggregation has a longer lag time not only in hCLEC-2<sup>Kl</sup> platelets but also in human platelets. (C) Platelet integrin activation measured by JON/A-PE antibody binding in flow cytometry shows no difference in (hem)ITAM-mediated platelet activation in hCLEC-2<sup>Kl</sup> platelets and hCLEC-2-specific activation by AYP1. (D) Platelet granule secretion measured using an anti-P-selectin antibody in flow cytometry was unaltered in hCLEC-2<sup>Kl</sup> following platelet activation by (hem)ITAM agonists, whereas AYP1 causes hCLEC-2-specific granule secretion. Data analyzed by two-way analysis of variance followed by a Sidak multiple comparison test. \*\*\*\**P* < .001. Results are shown as mean ± standard deviation, with each circle representing 1 individual and are representative of 3 independent experiments. CRP, collagen-related peptide; FITC, fluorescein isothiocyanate; Het, heterozygous; MFI, mean fluorescent intensity; PE, phycoerythrin; RC, rhodocytin.

agonists (Figure 1B-D; supplemental Figure 4). However, there was a slight increase in lag time before aggregation with RC, similar to that seen in human platelets (Figure 1B). Thrombus formation on collagen under flow at 1200 s<sup>-1</sup> was unaltered in hCLEC-2<sup>Kl</sup> mice (supplemental Figure 5). Platelet spreading was comparable to WT on both fibrinogen and collagen-related peptide. However, it was slightly reduced on mouse podoplanin for hCLEC-2<sup>Kl</sup> platelets because, although they formed both filopodia and lamellipodia, there were few fully spread platelets (supplemental Figure 6). Overall, this suggests that there are no major differences in platelet function in hCLEC-2<sup>Kl</sup> compared with WT mice.

The novel antibody HEL1 was generated by hybridoma technology following immunization of Wistar rats with hCLEC-2 immunoprecipitated from human platelet lysates. HEL1 is specific to hCLEC-2 and can be used in flow cytometry, western blotting, and immunoprecipitation (supplemental Figure 7A-C). It binds to a different epitope on CLEC-2 than AYP1 because no competition between the 2 antibodies was observed (supplemental Figure 7D), although both antibodies cause hCLEC-2<sup>Kl</sup> platelet aggregation (Figure 1B; supplemental Figure 7E). Furthermore, HEL1 Fab fragments neither block RC-induced platelet aggregation, unlike AYP1 Fab fragments,<sup>16</sup> nor block AYP1 IgG-induced aggregation of hCLEC-2<sup>Kl</sup> platelets (supplemental Figure 7F). This not only shows that AYP1 and HEL1 act at different sites on CLEC-2 but also shows

that CLEC-2 dimerization at either site is sufficient to trigger platelet activation because both antibodies, but not their Fab fragments, stimulate aggregation. To investigate whether human, like mice, CLEC-2 can be immunodepleted in vivo, AYP1 or HEL1 were injected intraperitoneally, and CLEC-2 surface expression was determined by flow cytometry. Both antibodies depleted CLEC-2 for at least 11 days, with levels returning to normal by 18 days for AYP1 and 24 days for HEL1 (Figure 2B; supplemental Figure 8). In both cases, there was a transient thrombocytopenia lasting up to 4 days (Figure 2A). This is consistent with immunodepletion of mCLEC-2 using INU1; however, the length of the CLEC-2 depletion is prolonged (Figure 2C).<sup>8,17</sup>

The effect of hCLEC-2 depletion was investigated in in vivo thrombosis and hemostasis models. Depletion had no effect on tail bleeding time (Figure 2D), which adds further support for CLEC-2 having a minor role in hemostasis.<sup>13</sup> In the mechanical injury of the abdominal aorta thrombosis model, there was no difference in the time to vessel occlusion in CLEC-2-depleted hCLEC-2<sup>Kl</sup> mice compared with untreated controls, and neither group differed significantly from WT mice (Figure 2E). Notably, in the ferric chloride-induced injury of the mesenteric arterioles, hCLEC-2<sup>Kl</sup> mice displayed an increased time to occlusion with 9 of 16 vessels failing to occlude. This was not the case for the hCLEC-2<sup>Kl</sup>-depleted mice, in which only 3 of 14 vessels failed to occlude (supplemental Figure 9). Thus, hCLEC-2<sup>Kl</sup> mice apparently



**Figure 2. hCLEC-2 can be immunodepleted using HEL1 or AYP1, with little effect on hemostasis.** (A) Platelet count following intraperitoneal injection of INU1, AYP1, or HEL1 antibody (3  $\mu$ g/g bodyweight). Transient thrombocytopenia lasting up to 4 days after injection can be seen for all antibody-treated groups compared with the untreated controls. Platelet count was determined by flow cytometry and is shown as the percentage of the baseline count. (B) hCLEC-2 surface expression determined by flow cytometry following depletion by either AYP1 or HEL1. For both antibodies, CLEC-2 could not be detected on the platelet surface for at least 11 days. (C) mCLEC-2 surface expression determined by flow cytometry following depletion by INU1 shows that CLEC-2 was absent for at least 7 days after injection. Measurements with anti-rat and anti-mouse IgG excluded the possibility that the abolished anti-CLEC-2-FITC binding was due to the presence of remaining anti-CLEC-2 antibodies on the platelets (supplemental Figure 8). (D) Depletion of CLEC-2 (using HEL1) had no effect on tail bleeding time.  $P > .05$ , Fisher exact test. Horizontal lines represent the median time to cessation of bleeding, with each circle representing 1 mouse. (E) Depletion of CLEC-2 had no effect on occlusive thrombus formation following mechanical injury of the abdominal aorta, and hCLEC-2<sup>Kl</sup> mice were comparable to WT.  $P > .05$ , Fisher exact test. Horizontal lines represent the median time to vessel occlusion, with each circle representing 1 mouse. For all experiments, a minimum of 5 mice were tested per group. FITC, fluorescein isothiocyanate; mAb, monoclonal antibody; MFI, mean fluorescent intensity.

resemble CLEC-2–depleted WT mice, as mice lacking CLEC-2 were protected in this model of arterial thrombosis.<sup>8,13</sup> These results are in line with previous studies suggesting that the contribution of CLEC-2 to thrombosis differs depending on the type of injury or the vascular bed.<sup>8,13,14</sup> In addition, our data suggest that there is a difference in the roles of mouse and humanized CLEC-2 in arterial thrombosis, with mouse CLEC-2 contributing to thrombus stability. We speculate that this discrepancy to previous reports on CLEC-2–deficient mice that displayed reduced thrombus formation<sup>8,13,15,18</sup> could be attributed to the postulated intravascular CLEC-2 ligand. This could explain the reduction in vessel occlusion in untreated hCLEC-2<sup>Kl</sup> mice

because the human receptor cannot interact with the mouse ligand to the same extent as the mouse receptor. In line with this hypothesis, it has recently been confirmed that mouse CLEC-2 contributes to arterial thrombosis and thrombus formation on collagen in vitro, whereas competitive inhibition of human CLEC-2 had no effect on in vitro thrombus formation.<sup>18</sup> It is also possible that human CLEC-2 itself has, at least to some extent, an antithrombotic effect, which could explain the difference in vessel occlusion between hCLEC-2<sup>Kl</sup> and hCLEC-2<sup>Kl</sup>–depleted mice. Notably, hCLEC-2 can compensate for mCLEC-2 during development and in hemostasis, suggesting a conserved interaction between CLEC-2 and podoplanin in hCLEC-2<sup>Kl</sup> mice.

Here, we have demonstrated that hCLEC-2 can be immunodepleted and provide proof of principle that the hCLEC-2<sup>KI</sup> mouse can be used to study anti-hCLEC-2 agents in vivo.

**Acknowledgments:** The authors thank Stefanie Hartmann, Juliana Goldmann, and Ewa Stepien-Bötsch for their excellent technical assistance.

This project has received funding from the European Union's Horizon 2020 research and innovation program under the Marie Skłodowska-Curie grant agreement number 766118. This work was supported by the CRC1525 (project number 453989101) and the TR240 (project number 374031971) of the Deutsche Forschungsgemeinschaft (German Research Foundation) and the Rudolf Virchow Center.

**Contribution:** H.C.B. performed experiments, analyzed data, and wrote the manuscript; S.B., S.N., E.M.S.J., and J.K. performed experiments and analyzed data; Y.D. and V.M. provided vital reagents and proofread the manuscript; S.G.T., S.P.W., and B.N. supervised the research and edited the manuscript; and D.S. supervised the research, performed experiments, analyzed the data, and wrote the manuscript.

**Conflict-of-interest disclosure:** The authors declare no competing financial interests.

**ORCID profiles:** H.C.B., 0000-0001-7794-151X; S.B., 0000-0002-7102-8241; S.N., 0000-0002-1112-8400; Y.D., 0000-0003-1963-0961; E.M.S.J., 0000-0003-3125-1833; S.G.T., 0000-0001-8733-7842; V.M., 0000-0002-6907-6455; S.P.W., 0000-0002-7846-7423; B.N., 0000-0003-1454-7413; D.S., 0000-0003-1059-9865.

**Correspondence:** David Stegner, Institute of Experimental Biomedicine, University Hospital and Rudolf Virchow Center for Integrative and Translational Biomedicine, University of Würzburg, Josef-Schneider-Str. 2/D15, 97080 Würzburg, Germany; email: [stegner@virchow.uni-wuerzburg.de](mailto:stegner@virchow.uni-wuerzburg.de).

## References

- Fuller GL, Williams JA, Tomlinson MG, et al. The C-type lectin receptors CLEC-2 and Dectin-1, but not DC-SIGN, signal via a novel YXXL-dependent signaling cascade. *J Biol Chem*. 2007;282(17):12397-12409.
- Rayes J, Watson SP, Nieswandt B. Functional significance of the platelet immune receptors GPVI and CLEC-2. *J Clin Invest*. 2019;129(1):12-23.
- Bertozzi CC, Schmaier AA, Mericko P, et al. Platelets regulate lymphatic vascular development through CLEC-2-SLP-76 signaling. *Blood*. 2010;116(4):661-670.
- Finney BA, Schweighoffer E, Navarro-Nunez L, et al. CLEC-2 and Syk in the megakaryocytic/platelet lineage are essential for development. *Blood*. 2012;119(7):1747-1756.
- Suzuki-Inoue K, Kato Y, Inoue O, et al. Involvement of the snake toxin receptor CLEC-2, in podoplanin-mediated platelet activation, by cancer cells. *J Biol Chem*. 2007;282(36):25993-26001.
- Kato Y, Kaneko MK, Kunitz A, et al. Molecular analysis of the pathophysiological binding of the platelet aggregation-inducing factor podoplanin to the C-type lectin-like receptor CLEC-2. *Cancer Sci*. 2008;99(1):54-61.
- Suzuki-Inoue K. Roles of the CLEC-2-podoplanin interaction in tumor progression. *Platelets*. 2018;29(8):786-792.
- May F, Hagedorn I, Pleines I, et al. CLEC-2 is an essential platelet-activating receptor in hemostasis and thrombosis. *Blood*. 2009;114(16):3464-3472.
- Shao B, Hoover CM, Shi H, et al. Deletion of platelet CLEC-2 decreases GPIIb/IIIa-mediated integrin  $\alpha$ IIb $\beta$ 3 activation and decreases thrombosis in TTP. *Blood*. 2022;139(16):2523-2533.
- Hitchcock JR, Cook CN, Bobat S, et al. Inflammation drives thrombosis after Salmonella infection via CLEC-2 on platelets. *J Clin Invest*. 2015;125(12):4429-4446.
- Beristain-Covarrubias N, Perez-Toledo M, Flores-Langarica A, et al. Salmonella-induced thrombi in mice develop asynchronously in the spleen and liver and are not effective bacterial traps. *Blood*. 2019;133(6):600-604.
- Stegner D, Göb V, Krenzl V, et al. Foudroyant cerebral venous (sinus) thrombosis triggered through CLEC-2 and GPIIb/IIIa dependent platelet activation. *Nat Cardiovasc Res*. 2022;1(2):132-141.
- Bender M, May F, Lorenz V, et al. Combined in vivo depletion of glycoprotein VI and C-type lectin-like receptor 2 severely compromises hemostasis and abrogates arterial thrombosis in mice. *Arterioscler Thromb Vasc Biol*. 2013;33(5):926-934.
- Haining EJ, Cherpokova D, Wolf K, et al. CLEC-2 contributes to hemostasis independently of classical hemITAM signaling in mice. *Blood*. 2017;130(20):2224-2228.
- Suzuki-Inoue K, Inoue O, Ding G, et al. Essential in vivo roles of the C-type lectin receptor CLEC-2: embryonic/neonatal lethality of CLEC-2-deficient mice by blood/lymphatic misconnections and impaired thrombus formation of CLEC-2-deficient platelets. *J Biol Chem*. 2010;285(32):24494-24507.
- Gitz E, Pollitt AY, Gitz-Francois JJ, et al. CLEC-2 expression is maintained on activated platelets and on platelet microparticles. *Blood*. 2014;124(14):2262-2270.
- Lorenz V, Stegner D, Stritt S, et al. Targeted downregulation of platelet CLEC-2 occurs through Syk-independent internalization. *Blood*. 2015;125(26):4069-4077.
- Bourne J, Smith C, Jooss N, et al. CLEC-2 supports platelet aggregation in mouse but not human blood at arterial shear. *Thromb Haemost*. 2022;122(22):1988-2000.