

Spin-density-wave order controlled by uniaxial stress in CeAuSb₂

Waite, R.; Orlandi, F.; Sokolov, D. A.; Ribeiro, R. A.; Canfield, P. C.; Manuel, P.; Khalyavin, D. D.; Hicks, C. W.; Hayden, S. M.

DOI:

[10.1103/PhysRevB.106.224415](https://doi.org/10.1103/PhysRevB.106.224415)

License:

None: All rights reserved

Document Version

Early version, also known as pre-print

Citation for published version (Harvard):

Waite, R, Orlandi, F, Sokolov, DA, Ribeiro, RA, Canfield, PC, Manuel, P, Khalyavin, DD, Hicks, CW & Hayden, SM 2023, 'Spin-density-wave order controlled by uniaxial stress in CeAuSb₂', *Physical Review B*, vol. 106, no. 22, 224415. <https://doi.org/10.1103/PhysRevB.106.224415>

[Link to publication on Research at Birmingham portal](#)

Publisher Rights Statement:

This is the Submitted manuscript of an article published in Physical Review B and available at 10.1103/PhysRevB.106.224415.

General rights

Unless a licence is specified above, all rights (including copyright and moral rights) in this document are retained by the authors and/or the copyright holders. The express permission of the copyright holder must be obtained for any use of this material other than for purposes permitted by law.

- Users may freely distribute the URL that is used to identify this publication.
- Users may download and/or print one copy of the publication from the University of Birmingham research portal for the purpose of private study or non-commercial research.
- User may use extracts from the document in line with the concept of 'fair dealing' under the Copyright, Designs and Patents Act 1988 (?)
- Users may not further distribute the material nor use it for the purposes of commercial gain.

Where a licence is displayed above, please note the terms and conditions of the licence govern your use of this document.

When citing, please reference the published version.

Take down policy

While the University of Birmingham exercises care and attention in making items available there are rare occasions when an item has been uploaded in error or has been deemed to be commercially or otherwise sensitive.

If you believe that this is the case for this document, please contact UBIRA@lists.bham.ac.uk providing details and we will remove access to the work immediately and investigate.

Spin-density-wave order controlled by uniaxial stress in CeAuSb₂

R. Waite,^{1,2} F. Orlandi,² D. A. Sokolov,³ R.A. Ribeiro,⁴ P. C. Canfield,⁴
P. Manuel,² D. D. Khalyavin,² C. W. Hicks,^{3,5} and S. M. Hayden¹

¹*H. H. Wills Physics Laboratory, University of Bristol, Bristol, BS8 1TL, United Kingdom*

²*ISIS Facility, Rutherford Appleton Laboratory, Chilton, Didcot, OX11 0QX, United Kingdom*

³*Max Planck Institute for Chemical Physics of Solids, Nöthnitzer Straße 40, 01187 Dresden, Germany*

⁴*Ames Laboratory, U.S. DOE, and Department of Physics and Astronomy,
Iowa State University, Ames, Iowa 50011, United States*

⁵*School of Physics and Astronomy, University of Birmingham, Birmingham B15 2TT*

The tetragonal heavy fermion compound CeAuSb₂ (space group $P4/nmm$) exhibits incommensurate spin density wave (SDW) order below $T_N \approx 6.5$ K with the propagation vector $\mathbf{q}_A = (\delta_A, \delta_A, 1/2)$. The application uniaxial stress along the [010] direction induces a sudden change in the resistivity ratio ρ_a/ρ_b at a compressive strain of $\epsilon \approx -0.5\%$. Here we use neutron scattering to show that the uniaxial stress induces a first-order transition to a SDW state with a different propagation vector $(0, \delta_B, 1/2)$ with $\delta_B = 0.25$. The magnetic structure of the new (B) phase consists of Ce layers with ordered moments alternating with layers with zero moment stacked along the c -axis. The ordered layers have an up-up-down-down configuration along the b -axis. This is an unusual situation in which the loss of spatial inversion is driven by itinerant magnetic order. We argue that the change in SDW wavevector leads to a concomitant Fermi surface reconstruction, similar to other materials where a SDW can be controlled by uniaxial stress or magnetic field such as Sr₃Ru₂O₇.

I. INTRODUCTION

Spin density wave (SDW) order occurs in many metallic systems and is a spatially varying magnetisation which, in general, is incommensurate with the crystal lattice. It can often be understood in terms of the electronic structure near the Fermi surface, in particular “nesting” between different electronic bands. A canonical example of a SDW system is elemental chromium¹ where the magnetic order appears above ambient temperature and can be understood in terms of Fermi surface nesting. In recent years, a number of systems, including Sr₃Ru₂O₇² and URu₂Si₂³, have been discovered in which spin density waves can be controlled by an applied magnetic field. In these materials, it is believed that the field-dependent exchange splitting between up- and down-spin bands changes the electronic structure and the nesting such that SDW phases are stabilised for particular field ranges. The presence of the SDWs can be seen in transport properties where it leads to anisotropic resistivity^{1,2,4}. In Sr₃Ru₂O₇, changes in the SDW order appear to correlate with metamagnetic transitions and topological changes in the Fermi surface^{2,5,6}.

CeAuSb₂ is a moderately heavy-fermion antiferromagnet^{7,8} with linear coefficient of specific heat $\gamma \approx 0.5$ JK⁻¹ mole⁻¹, a Kondo temperature of ~ 14 K and SDW order below $T_{SDW} \approx 6.5$ K at zero stress and magnetic field. It crystallises with a tetragonal space group $P4/nmm$ in a quasi-2D structure that consists of alternating CeSb-Au and CeSb-Sb planes stacked along the c -axis and the in-plane Ce-Ce bonds are along a/b axes. The application of a magnetic field^{8,9} along the c -axis leads to a magnetisation curve

$M(B)$ with metamagnetic anomalies and resistivity anomalies at $\mu_0 B_1 = 2.78$ T and $\mu_0 B_2 = 5.42$ T. These anomalies can be used to identify two phases A and A' as shown in Fig. 1. Neutron diffraction measurements by Marcus *et al.*¹⁰ show that the A phase is a SDW state with ordering wavevectors $\mathbf{q}_{1,2} = (\delta_A, \pm\delta_A, 0.5)$, where $\delta = 0.136$, and an ordered-moment polarised along the c -axis. Marcus *et al.* conclude that the A phase has single- \mathbf{q} SDW domains with \mathbf{q}_1 or \mathbf{q}_2 order and microscopic orthorhombic symmetry. In contrast, the A' is found to have a multi- \mathbf{q} structure in which modulations with wavevectors \mathbf{q}_1 , \mathbf{q}_2 , and $\mathbf{q}_1 \pm \mathbf{q}_2$ co-exist.

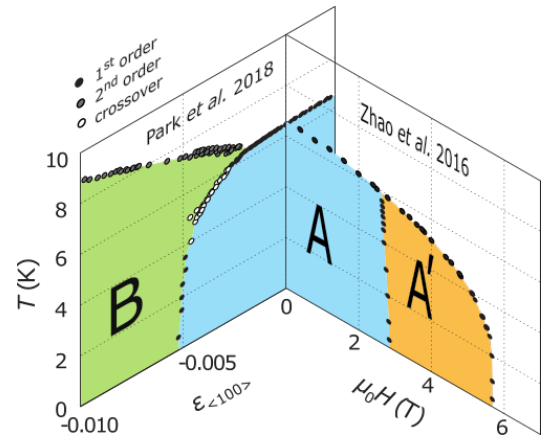


FIG. 1. Phase diagram of CeAuSb₂ determined from transport measurements in Refs. 9, 11, and 12 for a magnetic field applied along the [001] and a compressive strain $\epsilon_{\langle 100 \rangle}$ along the $\langle 100 \rangle$ -type direction.

The fact that a modest magnetic field can induce

changes in the structure of the SDW order suggests that CeAuSb₂ may have multiple nearly-degenerate ordered states. Another useful perturbation or tuning parameter is uniaxial stress applied, for example, along the $\langle 100 \rangle$ -type lattice direction of the tetragonal parent structure. In this paper we designate the axis along which stress is applied as the b -axis, or [010]. In contrast to applying the field along [001], this perturbation breaks the tetragonal lattice symmetry. The temperature/strain/magnetic field diagram of CeAuSb₂ has been extensively studied by transport and heat capacity^{9,11,12} (see Fig. 1 for a summary). Stress applied along [010] induces a transition into a new “B phase” at a strain of $\epsilon \sim -0.5\%$ (where negative ϵ denotes compressive strain) at the lowest temperatures. The transition to the B phase is characterised by sudden jump in the resistivity which suggests a first order transition, in particular, the resistivity along the [100] is enhanced. A analogous anisotropy in resistivity is induced in the SDW phases of Sr₃Ru₂O₇ when a component of magnetic field is applied along [100]^{2,4}.

In order to understand the unusual transport properties of the CeAuSb₂ B phase it is important to establish the nature of the SDW order. Here we report neutron diffraction measurements performed with in-situ uniaxial stress. Our measurements reveal that the B phase has a single- \mathbf{q} SDW order with the moment polarised along the c -axis and propagation vector, $\mathbf{q}_B = (0, 0.25, 0.5)$. The most obvious mechanism responsible for the anisotropic resistivity is a Fermi surface reconstruction caused by the SDW. In addition, the phase diagram of CeAuSb₂ has a strong similarity to those of the other heavy-fermion systems CeNiGe₃¹³, CeRh₂Si₂¹⁴ and YbNiSi₃¹⁵, which suggests that the stress and field phenomenology we will describe here might be rather common. In all these compounds, the easy axis is the c -axis, and transition from the zero-field magnetic order to a homogeneously-polarized state occurs via two first-order metamagnetic transitions, through an intermediate phase with higher resistivity.

II. EXPERIMENT

A. Sample Growth and Characterisation

Single crystals of CeAuSb₂ were grown by combining high purity elements (+99.99% Ce from Ames Lab, +99.9% Au, +99.99% Sb Alfa) in a CeAu₆Sb₁₂ ratio (as determined in Ref. 9). The elements were placed in a 5 ml fritted crucible set¹⁶ and sealed in an amorphous silica tube with silica wool below and above the set¹⁷. The growth ampoule was then heated to 1100 C over 5 hours, dwelled at 1100 C for 10 hours, cooled to 700 C over 150 hours. The melt was then decanted in a centrifuge to separate the excess liquid from the CeAuSb₂

single crystals¹⁷. Single crystals formed as plate-like crystals (see Fig. 2) that can readily have dimensions of $5 \times 5 \times 1$ mm³ or larger (with the shortest dimension along the c -axis). Temperature dependent electrical resistivity measurements allowed for evaluation of the residual resistivity ratio, $RRR \sim 6$, consistent with Ref. 9 and DC SQUID magnetisation measurements show the transition into the SDW-A phase occurs at $T_N \approx 6.5$ K.

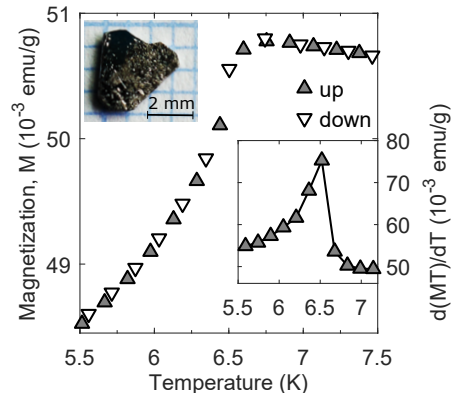


FIG. 2. DC SQUID magnetisation measurements for up and down temperature sweeps for the sample measured with neutron diffraction (shown in inset). A field of 0.5 T was applied in the ab -plane. The inset plot shows the derivative $d(MT)/dT$ for the up-sweep data - for an antiferromagnet at constant field this quantity is proportional to the heat capacity, $C_p(T)$ ¹⁸. The transition into the SDW-A phase occurs at $T_N \approx 6.5$ K.

B. Neutron Diffraction under uniaxial stress

The sample was mounted in a piezoelectric actuated uniaxial stress apparatus adapted for use in neutron scattering and muon spin rotation experiments. The apparatus and mounting procedure are described in detail in Ref. 19. The sample was cut into a bar of approximate dimensions 3.1 mm x 1.3 mm in the ab plane using a wire saw, and polished to a thickness of 0.21 mm along the c -axis. The sample ends were epoxied into the apparatus using de-gassed Stycast 2850FT prepared with the catalyst 23LV. Cadmium foil (which is strongly neutron absorbing) was used to mask the parts of the apparatus, epoxy exposed to the neutron beam and the end portions of the sample where the strain inhomogeneity was expected to be greatest. As will be discussed below, we observe that some portion of the sample exposed to the neutron beam remained unstained. The exposed length of sample was approximately 2.2 mm.

The sample holder incorporates a force sensor, and the cell a displacement sensor. Over the entire range of force explored here, the displacement was linear in applied force, indicating that both the sample and epoxy

holding it were within their elastic limits. The force sensor was calibrated by hanging weights from the holder, and yields the stress in the sample. Due to deformation of the epoxy holding the sample the displacement sensor cannot be used as an accurate sensor of the strain in the sample.

Neutron diffraction measurements were performed on WISH a time-of-flight (TOF) diffractometer at the ISIS neutron source, UK²⁰. The axis of the uniaxial stress cell was vertical, perpendicular to the (horizontal) scattering plane ($H, 0, L$). The sample was cooled to base temperature, 1.7 K, (in the presence of exchange gas) before stress was applied. Data were taken at two temperatures (1.7 K and 5.5 K) and a maximum compressive stress of $\sigma_{010} = 440$ MPa. For all stresses, the force and displacement measured by the strain gauge circuits were proportional indicating the sample did not crack.

The lattice strain along a and c (i.e. transverse to the compressive uniaxial stress) could be resolved in the d -spacing of the nuclear Bragg peaks. At non-zero stress, Bragg peaks measured in backscattering geometry (where the d -spacing resolution is highest) exhibit a shoulder at the d -spacing of the unstrained peak indicating that some of the sample ($\approx 20\%$) was unstrained.

Due to limited detector coverage out of the horizontal plane it was not possible to measure the b lattice parameter directly and the elastic constants of CeAuSb₂ have not been measured (so b cannot be inferred from the measured strain along the a and c axes). Further details can be found in Appendix A.

For determination of the UB matrices used to index reflections in the remainder of this work, we assume that the unit cell volume is conserved under uniaxial stress (isochoric distortion). This condition sets the b -axis Young's modulus to be 95 GPa, and can be considered to set a lower bound on the magnitude of the b -axis strain. Comparison of the data here with the phase diagram of Ref. 11 indicates a Young's modulus of ≈ 60 GPa. It will be shown that the uncertainty on the b lattice parameter does not impact the conclusions of this paper.

The single crystal data were integrated using the Mantid software²¹. The data were corrected for the Lorentz factor, normalised to the total current and incident flux and to a vanadium standard sample run to account for detector efficiency. The data were also corrected for absorption using a cylindrical shaped crystal as approximation for the sample shape. The refinements of the nuclear and magnetic structures were performed using the Jana2006 software²² for data collected on a single crystal orientation at 1.7K at two stresses $\sigma_{010} = 0$ MPa and $\sigma_{010} = 440$ MPa. Structures are displayed using the MVisualize software^{23,24}. Cif and mCif files of all the structures refined are reported as supplementary information.²⁵

III. RESULTS

A. Stress-induced SDW order (B phase)

Fig. 3 shows the scattering intensity in the ($H, K, 0.5$) plane at selected stresses at the two temperatures measured. At zero stress and zero magnetic field, CeAuSb₂ exhibits incommensurate SDW order (A phase). The parent $P4/nmm$ space group gives rise to two symmetrically equivalent domains of single- \mathbf{q} order with propagation vectors $\mathbf{q}_{1,2} = (\delta_A, \pm\delta_A, 0.5)$, producing four satellite peaks shown in Fig. 3a (as seen previously in Ref. 10).

The compressive stress along the b -axis induces a new mono-domain of single- \mathbf{q} SDW order in the B phase with wave-vector $\mathbf{q}_B = (0, \delta_B, 0.5)$. The SDW order in A & B phases doubles the unit cell along the c -axis, in contrast to the SDW order in the magnetic-field-induced A' phase¹⁰. In addition it can be seen that the boundary between the A & B phases occurs at a lower stress at 5.5 K (see Fig. 1) and that there is some phase coexistence near the phase boundary (most evident in the 1.7 K data at $\sigma_{010} = 272$ MPa). Phase coexistence would be expected at a first-order transition, but there may also be a contribution from the inhomogeneity of the applied strain.

Fig. 3b shows the integrated intensity of magnetic Bragg peaks in the A & B phases as a function of compressive stress at the two temperatures measured 1.7 K and 5.5 K (after subtraction of a temperature and stress independent linear background). The resistivity for a current applied parallel and perpendicular to the compressive strain as a function of strain at 1.5 K from Park *et al.*¹¹ is also reproduced with the axis scaled to the stress used in this experiment using a Young's modulus of $E = 60$ GPa, that provides a rough agreement between the observed phase boundary at low temperature.

From Fig. 3b it can be seen that at both temperatures measured the SDW intensity in the A phase does not respond strongly to compressive stress along b until the onset stress for the B phase is reached (this can also be seen in the raw data shown in Fig. 3c). The onset of the B phase peak intensity is correlated with the reduction in A phase peak intensity, which plateaus at a low value slightly above the background at a stress of $\sigma_{010} \approx 272$ MPa and $\sigma_{010} \gtrsim 320$ MPa at 5.5 K and 1.7 K respectively. The residual A phase peak intensity at the largest stress measured is roughly 20% of the average zero stress intensity at both temperatures, which is consistent with the volume fraction of the sample under stress determined from the fits to (003) peak (see Appendix A).

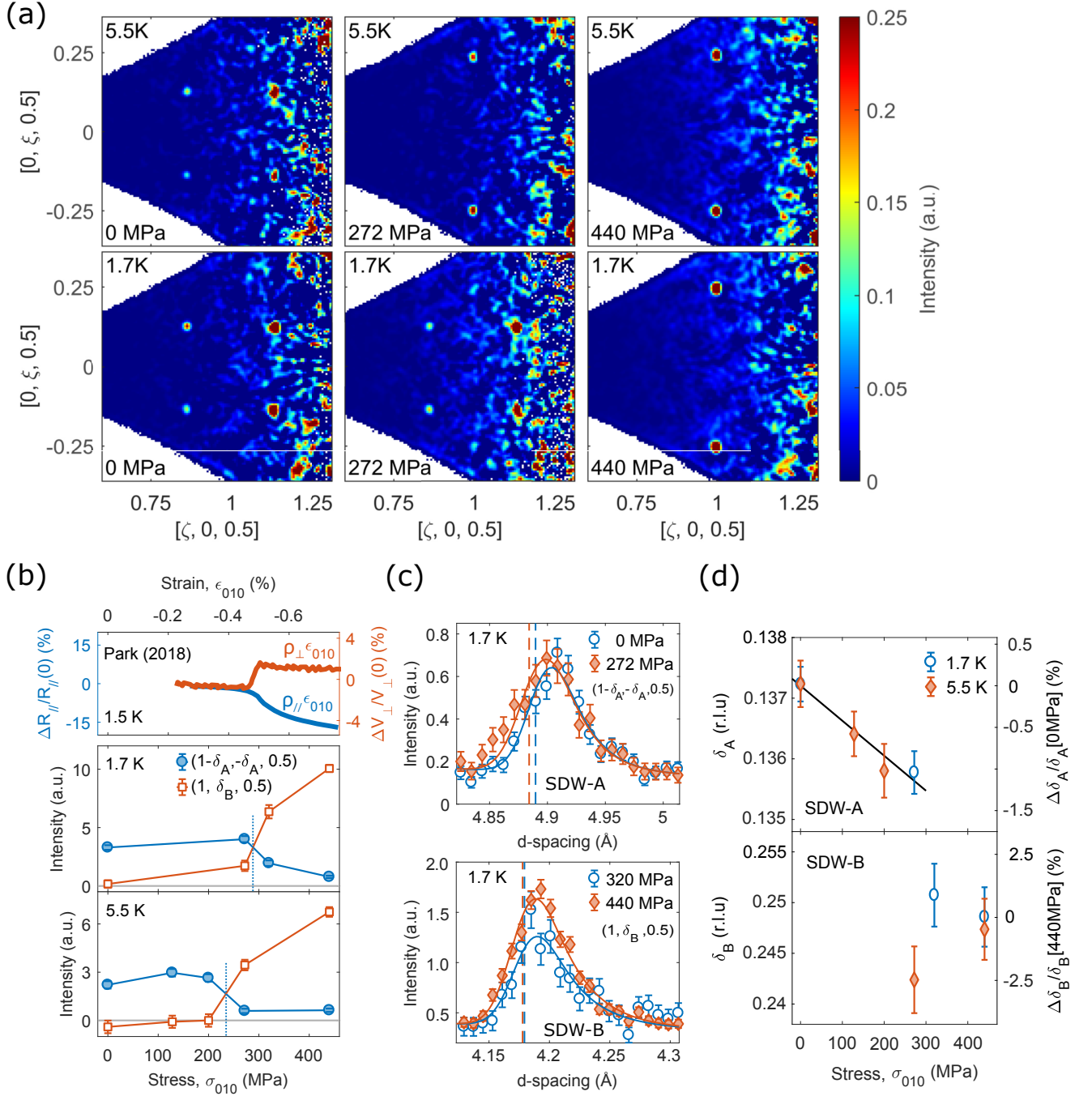


FIG. 3. (a) Neutron diffraction data in the $(H,K,0.5)$ plane for three values of compressive stress along $[010]$, σ_{010} , at two temperatures (5.5 K and 1.7 K). The data are smoothed and a planar background has been subtracted. It can be seen that compressive uniaxial stress along $[010]$ induces a mono-domain of single- \mathbf{q} order with a modulation vector rotated by 45° with respect to the zero stress phase. (b) (top) Resistivity for a current applied parallel and perpendicular to the compressive strain as a function of strain at 1.5 K reproduced from Ref. 11. (middle, bottom) Integrated intensity of magnetic Bragg peaks in the A & B phase as a function of stress (after background subtraction) for $T=1.7, 5.5$ K. Vertical blue lines represent the approximate phase boundary determined from the crossing of the A phase and B phase curves. (c) Magnetic Bragg peaks in the A phase (top) and B phase (bottom) at the minimum and maximum stress at which data were collected at 1.7 K. Solid lines are fits to the peak with a Gaussian convoluted with a back to back exponential, the fitted lattice parameter is indicated by dashed line (which does not coincide with the peak maximum). (d) Refined value of δ_A (top) and δ_B (bottom) at two temperatures 1.7 K and 5.5 K as a function of compressive stress along b . Solid line is a linear fit.

B. Stress dependence of the SDW modulation

shown at the minimum and maximum stress measured

In Fig. 3c we show the scattered intensity for magnetic Bragg peaks in the A and B phases. Data are

in each phase at 1.7 K. The peaks were fitted with a Gaussian peak convoluted with a back-to-back exponential (the same profile used to fit the nuclear Bragg peaks). The d -spacing of the A phase reflection (indicated by the dashed line in Fig. 3c - which does not coincide with the maximum of the peak due to the asymmetric pulse shape from the moderator) exhibits a weak dependence on stress, with a barely resolvable shift to lower d -spacing for $\sigma_{010} = 272$ MPa. If the incommensurability of the A phase wavevector, δ_A , were to remain at the zero stress value, the d -spacing would be expected to increase slightly by approximately the same magnitude as the observed peak shift (the momentum transfer has only a small component along the compressed axis, b , and the a and c lattice parameters are increasing due to the Poisson's ratio of the material). There is no resolvable shift observed in the d -spacing of the B phase peak.

Under the assumption of an isochoric lattice distortion, we have determined the incommensurability, $\delta_{A/B}$, of the modulation vectors from the d -spacing of the magnetic reflections using a total of 8 peaks (4 symmetrically inequivalent) and 6 peaks (3 symmetrically inequivalent) for the A and B phase respectively. Fig. 3d shows the refined incommensurability as a function of stress. Note for the A phase at finite stress the modulation has been assumed to maintain the tetragonal symmetry (i.e. the component of the modulation along a and b has been assumed to be equal) - this is reasonable given the distortion is small and the phase does not appear to couple strongly to stress.

The incommensurability of the A phase at zero stress, $\delta_A = 0.137(2)$, is consistent with the value found by Marcus *et al.*¹⁰. These data suggest that δ_A may decrease slightly with σ_{010} (of the order of 1% over the extent of the phase). The modulation in the B phase at 1.7 K and $\sigma_{010} = 440$ MPa stress is $\delta_B \approx 0.248(4)$ - it is consistent with a commensurate value $\delta_B = 0.25$ for all stresses measured. The absolute magnitude of δ_B (and to a lesser extent δ_A) will of course depend on the b lattice parameter: in the refinement we have assumed an isochoric distortion, however the effect of assuming the material is softer with a Young's modulus of $E \approx 60$ GPa (determined from the approximate phase boundary at 1.7 K) is an order of magnitude smaller than the uncertainty on δ_B at $\sigma_{010} = 440$ MPa.

C. Refinement of the single crystal data

1. Zero strain phase (A phase)

The zero stress data were refined from the published structure with the tetragonal space group $P4/nmm$ ²⁶. A total of 41 viable nuclear reflections were integrated over

$T = 1.7$ K	0 MPa
Spacegroup	$P4/nmm$
$a(\text{\AA})$	4.3976(3)
$c(\text{\AA})$	10.30644(9)
Ce, z	0.7545(14)
Sb2, z	0.3261(14)
U_{iso}	0.0047(18)
Reflections	41
R	11.88%
R_w	12.61%

TABLE I. Lattice parameters and nuclear structure refinement results for data at 0 MPa at 1.7 K. Atomic positions are in fractional coordinates: Ce 2c(0,0.5, z), Au 2b(-0.5,0.5,0.5), Sb1 2a(0,0,0), Sb2 2c(0,0.5, z). An isotropic thermal displacement parameter U_{iso} was constrained to be the same for all atoms.

an ellipsoid in \mathbf{Q} -space with axes determined for each reflection from the estimated covariance of the data in a sphere of radius governed by the TOF width of the peak. To reduce the number of refinable parameters a single isotropic thermal factor has been defined for all atomic species. The extinction correction used in the refinement is a type-II Becker and Coppens isotropic model²⁷. The results of the nuclear structure refinement are shown in Table. I, the agreement between calculated and observed structure factor and a sketch of the structure are reported in Fig. 4.

The magnetic superspace group for the SDW A phase has been determined with the help of group theoretical calculation using the ISODISTORT and ISOTROPY software^{28,29}. Two irreducible representation (irreps) mS2 and mS4, corresponding to the superspace groups $Cmme1'(0\beta 1/2)s00s$ and $Cmme1'(0\beta 1/2)s0ss$ respectively, have been found to refine the data with the same reliability parameters. The difference between the two irreps regards the relative phase of the Ce moment at different z -coordinate, being antiferromagnetic for mS2 and ferromagnetic for mS4. The refined SDW has an amplitude of $0.66(4)\mu_B$. The refinement has been conducted on 10 magnetic reflections taking into account both magnetic domains and by fixing the domain fraction to 0.5. The reliability factor for the magnetic refinement are $R = 12.1\%$ and $R_w = 14\%$. The value of the SDW amplitude in zero strain is significantly smaller than what observed by Marcus *et al.*¹⁰. The reason for this discrepancy is still not clear. The final agreement between the observed and calculated structure factors is shown in Fig. 4. As mentioned earlier, the SDW in the A phase has single- \mathbf{q} domains¹⁰, a \mathbf{q}_1 domain is shown in Fig. 4.

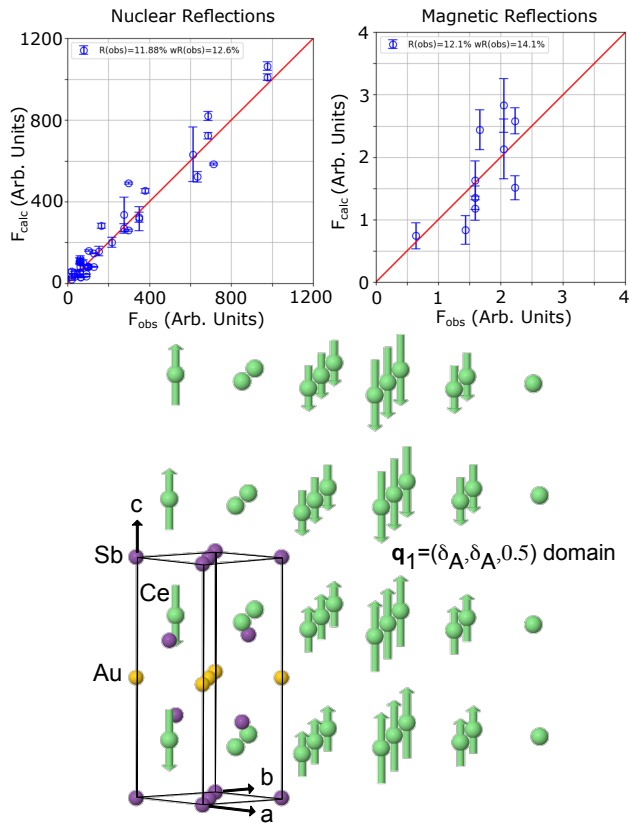


FIG. 4. A phase structure. (Top) Observed and calculated intensities from the refinement of the nuclear and magnetic structure at 0 MPa and 1.7 K using Jana2006. The nuclear structure refinement has $R = 11.9\%$ and $R_w = 12.6\%$ and the magnetic structure refinement has $R = 12.1\%$ and $R_w = 14.1\%$. (Bottom) drawing of the nuclear and magnetic structure at 0 MPa and 1.7 K (only cerium atoms shown in magnetic structure for clarity). The magnetic structure shows a single $\mathbf{q}_1 = (\delta_A, \delta_A, 0.5)$ domain.

2. High strain phase (B phase)

The single crystal data at finite stress were refined with the orthorhombic space group $Pm\bar{m}n$ for the nuclear structure, derived from the action of the orthorhombic Γ_2^+ strain on the $P4/nmm$ space group. As for the zero strain structure a single isotropic thermal parameter has been refined and an isotropic Becker and Coppens²⁷ Type-II model has been used for extinction correction. The structure parameters and reliability factors are reported in Table. II, the agreement between observed and calculated structure factors and a sketch of the nuclear structure are reported in Fig. 5

The experimentally determined propagation vector in the B phase, $\mathbf{q}_B = (0, \delta_B, 1/2)$, is commensurate with $\delta_B = 1/4$ within the accuracy of our measurements, as discussed Sec. III B. Furthermore there is a symmetry

$T = 1.7$ K	440 MPa
Spacegroup	$Pm\bar{m}n$
a (Å)	4.4035(3)
b (Å)	4.3772
c (Å)	10.3404(1)
Ce, z	0.7652(11)
Au, z	0.4950(8)
Sb1, z	0.0026(11)
Sb2, z	0.3192(10)
U_{iso}	0.0054(13)
Reflections	41
R	9.51
R_w	9.44

TABLE II. Lattice parameters and nuclear structure refinement results for data at 440 MPa compressive stress along the b -axis at 1.7 K. The a/c lattice parameters were determined from fits to nuclear Bragg peaks, the b lattice parameter assumes an isochoric distortion. Atomic positions are in fractional coordinates: Ce $2c(0, 0.5, z)$, Au $2b(0, 0, z)$, Sb1 $2a(0, 0, z)$, Sb2 $2c(0, 0.5, z)$. An isotropic thermal displacement parameter U_{iso} was constrained to be the same for all atoms.

reason to lock the propagation vector to the commensurate value. The latter comes from the fact that when $\delta_B = 1/4$, the Landau free energy decomposition allows the presence of additional “lock-in” terms, $h_j^8 + h_j^{*8}$, where (h_j, h_j^*) are the complex order parameters transformed by mB_j ($j = 1 - 4$) irreducible representations (irreps) of the $Pm\bar{m}n$ space group, associated with the \mathbf{q}_B propagation vector. The invariance of these terms can be verified using the matrix operators for the generating symmetry elements summarized in Table III in the Appendix B. It worth to point out that the lock-in commensurate phases have been also observed in some other Ce-based intermetallic systems such as CeIrGe₃³⁰ and CeRhGe₃³¹. Taking into account these facts, we approached the refinement of the magnetic structure in the B phase of CeAuSb₂ assuming a commensurate propagation vector. In this scenario, the symmetry of the magnetic structure depends on the global phase of the modulation, resulting in a several possible origin choices. Another important symmetry aspect is the existence of linear-cubic free energy invariants which provide a coupling between $mB_1(\eta_1, \eta_1^*)$ and $mB_3(\eta_3, \eta_3^*)$, $\eta_1\eta_3^3 + \eta_1^*\eta_3^{*3}$, and between $mB_2(\eta_2, \eta_2^*)$ and $mB_4(\eta_4, \eta_4^*)$, $\eta_2\eta_4^3 + \eta_2^*\eta_4^{*3}$, order parameters. These invariants are symmetric with respect to the subscript indices and the coupling terms $\eta_3\eta_1^3 + \eta_3^*\eta_1^{*3}$ and $\eta_4\eta_2^3 + \eta_4^*\eta_2^{*3}$ are also allowed. This implies that in the case of commensurate ordering, the corresponding order parameters can be mixed without changing the magnetic symmetry of the system. The mB_1 and mB_3 irreps transform the magnetic modes with the moments along the a -axis of the $Pm\bar{m}n$ space group, while mB_2 and mB_4 transform the modes with the moments along the b - and

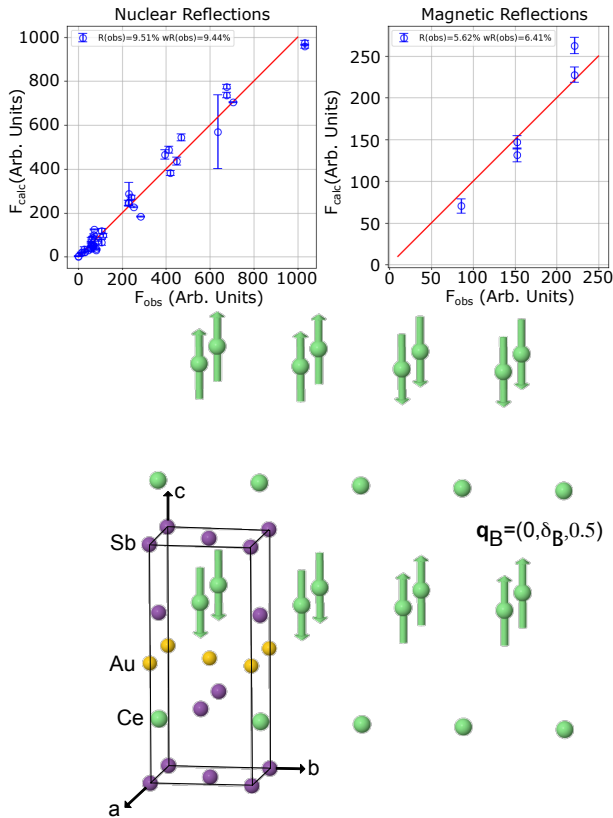


FIG. 5. B phase structure. (Top) Observed and calculated intensities from the refinement of the nuclear and magnetic structure at 440 MPa and 1.7 K using Jana2006. The nuclear structure refinement has $R = 9.5\%$ and $R_w = 9.4\%$ and the magnetic structure refinement has $R = 5.6\%$ and $R_w = 6.4\%$ (commensurate A_bem2 structure). (Bottom) drawing of the nuclear and magnetic structure at 440 MPa and 1.7 K (only cerium atoms shown in magnetic structure for clarity).

c -axes. The magnetic phases of the spin density waves localized on the Ce sites with $z=0.235$ and $z=0.765$ in the parent structure, differ by π in the magnetic modes which belong to the different irreps. Quantitative refinement of the measured magnetic intensities revealed that, similar to the A phase, the Ce moments in the B phase are predominantly polarized along the c -axis which is common for both tetragonal $P4/nmm$ and $Pmnm$ space groups. Moreover, the refinement has been found to be sensitive to the admixture between mB_2 and mB_4 irreps, yielding equal weight for both order parameters, as well as to their relative magnetic phases. The best fitting quality was achieved in the model shown in Fig. 5 with reliability factors $R = 5.62\%$ and $R_w = 6.41\%$. This solution implies the orthorhombic polar symmetry A_bem2 , making $CeAuSb_2$ an exciting system, where loss of spatial inversion is driven by magnetic ordering. This phenomenon is well known for insulators such as type II multiferroics³², but it rather rare for metals^{33,34}.

Refinement of the neutron diffraction data assuming the incommensurate propagation vector provided a worse fitting quality with a R_w reliability factor of 8.6% compared to 6.4% for the commensurate A_bem2 with the same number of refinable variables. In this case, two magnetic superspace groups $Pmmm1'(0, \beta, 1/2)s0ss$ and $Pmmm1'(0, \beta, 1/2)s00s$ associated with mB_2 and mB_4 irreps cannot be distinguished. In both models, the Ce moments are aligned along the c -axis and the difference stands to the relative magnetic phases for the spin density waves localized on the Ce sites with different z -coordinate in the parent structure. No admixture of the irreps is allowed for the incommensurate propagation vector. Due to the worse fitting quality, the observed propagation vector and the symmetry reasons discussed above, we believe the incommensurate scenario is less likely and we do not discuss it further. The proposed commensurate magnetic structure, shown in Fig. 5, involves alternation of the Ce layers which carry magnetic moments of $1.15(4)\mu_B$ at 1.7K with zero-moment layers. In the former, the ordering is up, up, down, down upon propagation along the b -axis.

IV. DISCUSSION

A. Itinerant magnetism

There are two paradigms in which to consider the magnetism in this compound: the localised limit and the itinerant limit in which the Ce moments are screened by the conduction electrons. The refined wavevector of the B phase is consistent within the error with a commensurate modulation, $\mathbf{q}_B = (0, 0.25, 0.5)$. We note that this conclusion is not impacted by the negligible systematic uncertainty on the b -axis lattice parameter. However, a commensurate wavevector does not necessarily imply local-moment order. For example, dilute chromium alloys³⁵ and the iron pnictide superconductor $BaFe_2As_2$ ³⁶ exhibit a first-order incommensurate-commensurate transition that arises from slightly imperfect nesting between electron and hole-pockets, which in both of the above compounds can be tuned with doping. Unlike an incommensurate sinusoidal modulation, the free energy of a commensurate modulation depends on the phase. It might be energetically favourable to preserve a constant moment across all sites (which would hint at local moment behaviour), or conversely to have nodes of zero amplitude on specific sites (which is incompatible with local moments). This can force a modulation to 'lock-in' on a commensurate value even if the ideal nesting is slightly incommensurate³⁷. For example, such a mechanism is believed to be behind the incommensurate-commensurate transitions of the charge-density wave in $2H-TaSe_2$ ³⁸.

Overall the observed magnetic structure of the B phase that includes Ce sites with zero magnetic moment, shown in Fig. 5, and the detailed symmetry analysis reported in Sec. III-C suggest that the order in CeAuSb₂ is closer to the itinerant limit. This result is consistent with CeAuSb₂ being a moderate, heavy Fermion material. We note that the presence of sites with zero-magnetic moments is not unique in metallic systems and it has been observed in other SDW ordered materials such as in the C₄ phase of iron-based superconductors^{39,40}

The present work taken together with the previous neutron study¹⁰ shows that the SDW state of CeAuSb₂ may be switched by the application of magnetic field or uniaxial stress. At the lowest temperature these phase transitions are first order with a change in the symmetry of the order parameter. The ordering in SDW systems can be often be understood terms of the wavevector-dependent susceptibility $\chi(\mathbf{q})$ calculated from the Lindhard function. The generalised Stoner criterion will predict SDW order when $U\chi(\mathbf{q}) \geq 1$, where U is the Hubbard energy. In the case of CeAuSb₂ we would then expect $\chi(\mathbf{q})$ to be sufficiently field and stress dependent that the SDW ordering wavevector can switch between different \mathbf{q} 's. To date, a detailed connection between the electronic structure/Fermi surface the ordering wavevectors has not been identified, however, published band structures^{10,41} do offer possibilities for nesting. We note that a Fermi surface that shows topological reconstruction as a function of magnetic field has been proposed in the sister compound Sr₃Ru₂O₇ which also exhibits a SDW controlled by magnetic field^{2,6}.

B. Transport signature of the B phase

Previous transport measurements have mapped out the temperature-strain-magnetic field phase diagram of CeAuSb₂^{9,11,12}. The neutron diffraction data presented here are qualitatively consistent with the published phase diagram^{11,12}. In particular we observe the onset of magnetic Bragg scattering associated with the B phase at a lower stress at 5.5 K than 1.7 K. The present data shed new light on the anisotropic transport observed inside the B phase. The onset of B phase order as a function of stress at low temperature is associated with a first-order step in the resistivity perpendicular to the axis of compression¹¹. We can now identify the axis of the enhanced resistivity as perpendicular to the observed wavevector in the B phase (i.e. $\rho_{\perp} > \rho_{\parallel}$). The opposite trend is observed in Sr₃Ru₂O₇^{2,4} and in Cr⁴² ($\rho_{\parallel} > \rho_{\perp}$).

As the B phase exhibits only one domain the enhanced resistivity is intrinsic to the order (i.e. not due to scattering at domain walls). If the resistivity enhancement in ρ_{\parallel} were due to the SDW gapping out carriers on the Fermi surface, this result would imply that the \mathbf{q}_B -SDW

gaps out states where the Fermi velocity is predominately perpendicular to \mathbf{q}_B . From the top and middle panels in Fig. 3 we see that reduction of ρ_{\perp} correlates with the intensity of $(1 - \delta_A, -\delta_A, 0.5)$ peak of the A phase suggesting that this is due to the return of states at the Fermi level previously gapped out by the SDW with this wavevector.

V. CONCLUSION

The main result of this work is that compressive uniaxial stress applied along the [010] axis of tetragonal CeAuSb₂ induces a phase (B phase) with a mono-domain of single- \mathbf{q} SDW order with commensurate wavevector $\mathbf{q}_B = (0, 0.25, 0.5)$ producing a structure that breaks spatial inversion symmetry. The B phase of CeAuSb₂ is one of small number of metals^{33,34} where the loss of spatial inversion is driven by magnetic ordering. The component of \mathbf{q}_B in the ab -plane is parallel to the direction of the applied stress. This contrasts with A phase (in the absence of stress) where the SDW has wavevectors $\mathbf{q}_A = (0.136, \pm 0.136, 0.5)$. We believe that the change in SDW wavevector leads to a Fermi surface reconstruction which is reflected in a change in transport anisotropy. CeAuSb₂ is a good system to test this mechanism because a single domain SDW can be prepared. A similar mechanism may occur in other materials where magnetic field or strain-dependent anomalies in resistivity are observed including Sr₃Ru₂O₇^{2,4}, URu₂Si₂³, CeNiGe₃¹³, CeRh₂Si₂¹⁴ and YbNiSi₃¹⁵.

ACKNOWLEDGMENTS

We acknowledge funding and support from the Engineering and Physical Sciences Research Council (EPSRC) Centre for Doctoral Training in Condensed Matter Physics (CDT-CMP), Grant No. EP/L015544/1. The authors thanks the Science and Technology Facility Council (STFC) for the provision of neutron beam time at ISIS (UK). Work done at Ames Laboratory (PCC, RAR) was supported by the U.S. Department of Energy, Office of Basic Energy Science, Division of Materials Sciences and Engineering. Ames Laboratory is operated for the U.S. Department of Energy by Iowa State University under Contract No. DE-AC02-07CH11358. RAR was also supported by the Gordon and Betty Moore Foundation's EPiQS Initiative through Grant GBMF4411.

	$mB_1(\eta_1, \eta_1^*)$	$mB_2(\eta_2, \eta_2^*)$	$mB_3(\eta_3, \eta_3^*)$	$mB_4(\eta_4, \eta_4^*)$
$\{2_z 1/2, 1/2, 0\}$	$\begin{pmatrix} 0 & e^{\frac{1}{4}\pi i} \\ e^{-\frac{1}{4}\pi i} & 0 \end{pmatrix}$	$\begin{pmatrix} 0 & e^{\frac{5}{4}\pi i} \\ e^{\frac{3}{4}\pi i} & 0 \end{pmatrix}$	$\begin{pmatrix} 0 & e^{\frac{5}{4}\pi i} \\ e^{\frac{3}{4}\pi i} & 0 \end{pmatrix}$	$\begin{pmatrix} 0 & e^{\frac{1}{4}\pi i} \\ e^{-\frac{1}{4}\pi i} & 0 \end{pmatrix}$
$\{2_y 0, 1/2, 0\}$	$\begin{pmatrix} e^{\frac{1}{4}\pi i} & 0 \\ 0 & e^{-\frac{1}{4}\pi i} \end{pmatrix}$	$\begin{pmatrix} e^{\frac{1}{4}\pi i} & 0 \\ 0 & e^{-\frac{1}{4}\pi i} \end{pmatrix}$	$\begin{pmatrix} e^{\frac{5}{4}\pi i} & 0 \\ 0 & e^{\frac{3}{4}\pi i} \end{pmatrix}$	$\begin{pmatrix} e^{\frac{5}{4}\pi i} & 0 \\ 0 & e^{\frac{3}{4}\pi i} \end{pmatrix}$
$\{-1 0, 0, 0\}$	$\begin{pmatrix} 0 & 1 \\ 1 & 0 \end{pmatrix}$	$\begin{pmatrix} 0 & 1 \\ 1 & 0 \end{pmatrix}$	$\begin{pmatrix} 0 & 1 \\ 1 & 0 \end{pmatrix}$	$\begin{pmatrix} 0 & 1 \\ 1 & 0 \end{pmatrix}$
$\{1 0, 1, 0\}$	$\begin{pmatrix} e^{\frac{1}{2}\pi i} & 0 \\ 0 & e^{-\frac{1}{2}\pi i} \end{pmatrix}$	$\begin{pmatrix} e^{\frac{1}{2}\pi i} & 0 \\ 0 & e^{-\frac{1}{2}\pi i} \end{pmatrix}$	$\begin{pmatrix} e^{\frac{1}{2}\pi i} & 0 \\ 0 & e^{-\frac{1}{2}\pi i} \end{pmatrix}$	$\begin{pmatrix} e^{\frac{1}{2}\pi i} & 0 \\ 0 & e^{-\frac{1}{2}\pi i} \end{pmatrix}$
$\{1 0, 0, 1\}$	$\begin{pmatrix} -1 & 0 \\ 0 & -1 \end{pmatrix}$	$\begin{pmatrix} -1 & 0 \\ 0 & -1 \end{pmatrix}$	$\begin{pmatrix} -1 & 0 \\ 0 & -1 \end{pmatrix}$	$\begin{pmatrix} -1 & 0 \\ 0 & -1 \end{pmatrix}$
T	$\begin{pmatrix} -1 & 0 \\ 0 & -1 \end{pmatrix}$	$\begin{pmatrix} -1 & 0 \\ 0 & -1 \end{pmatrix}$	$\begin{pmatrix} -1 & 0 \\ 0 & -1 \end{pmatrix}$	$\begin{pmatrix} -1 & 0 \\ 0 & -1 \end{pmatrix}$

TABLE III. Matrices of the irreducible representations of $Pm\bar{m}n$ space group, associated with $q=(0,1/4,1/2)$ propagation vector⁴³. T is time reversal operator.

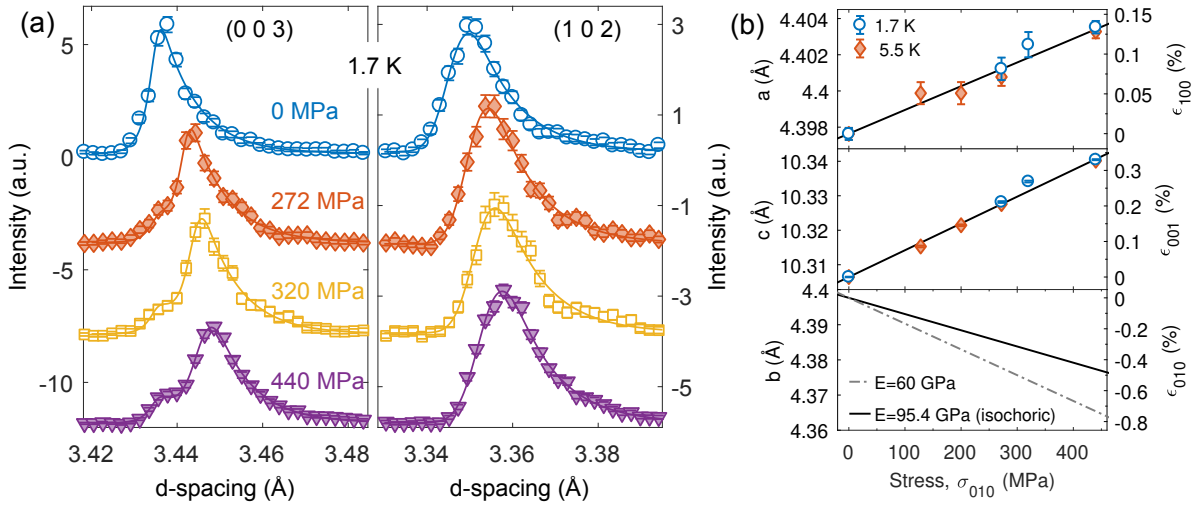


FIG. 6. (a) The intensity of (003) and (102) nuclear peaks plotted as a function of d -spacing for various values of compressive stress along the b -axis (curves are offset for clarity). Solid lines are fits with a back-to-back exponential convoluted with a Gaussian. The (003) peak was measured at higher resolution, at non-zero stress the peak exhibits a shoulder at the zero stress position indicating a portion of the sample ($\approx 20\%$) was not stressed. The peak positions shift due to larger d -spacing with increasing compression along the b -axis as the a - and c -axis lattice parameters increase. (b) The a and c lattice parameters at 1.7 K and 5.5 K as a function of compressive stress along the b -axis, σ_{010} , and the predicted b -axis lattice parameter for two values of the Young's modulus (b could not be measured directly). The lattice parameters were refined from the d -spacing of 8 nuclear peaks.

Appendix A: Measurement of the applied strain

Fig. 6(a) shows the intensity of (003) and (102) nuclear peaks at a different compressive stresses. Under compressive stress the peaks shift to higher d -spacing as the a and c lattice parameters increase due to the Poisson's ratios of the material. The stress dependence of the a and c lattice parameters is shown in Fig. 6(b)), obtained from a fit of 8 nuclear peaks using a Gaussian peak convoluted with a back-to-back exponential⁴⁴.

At finite stress several nuclear peaks that were measured in backscattering geometry, where the d -spacing resolution is highest, such as the (003) peak shown in Fig. 6(a), exhibit a small shoulder ($\approx 20\%$ of the total intensity) centered at the zero strain d -spacing. This in-

dicates that a small portion of the sample was unstrained. In the remainder of the sample a high stress homogeneity was achieved: a single stressed Bragg peak is observed and in the high-resolution data we do not observe a statistically significant increase in the peak full width half maximum.

Appendix B: Lock-in terms

Table III reports the transformation matrices, defined in a complex basis, for the generators of the $Pmmn$ space group. The mB_j ($j = 1 - 4$) irreducible representations are all time odd and the matrices can be used to verify the invariance of the free energy terms discussed in Sec. III C 2.

-
- ¹ E. Fawcett, Rev. Mod. Phys. **60**, 209 (1988).
 - ² C. Lester, S. Ramos, R. Perry, T. Croft, R. Bewley, T. Guidi, P. Manuel, D. Khalyavin, E. Forgan, and S. Hayden, Nat. Mater. **14**, 373 (2015).
 - ³ W. Knafo, F. Duc, F. Bourdarot, K. Kuwahara, H. Nojiri, D. Aoki, J. Billette, P. Frings, X. Tonon, E. Lelievre-Berna, J. Flouquet, and L.-P. Regnault, Nat. Commun. **7**, 13075 (2016).
 - ⁴ R. A. Borzi, S. A. Grigera, J. Farrell, R. S. Perry, S. J. S. Lister, S. L. Lee, D. A. Tennant, Y. Maeno, and A. P. Mackenzie, Science **315**, 214 (2007).
 - ⁵ S. A. Grigera, P. Gegenwart, R. A. Borzi, F. Weickert, A. J. Schofield, R. S. Perry, T. Tayama, T. Sakakibara, Y. Maeno, A. G. Green, and A. P. Mackenzie, Science **306**, 1154 (2004).
 - ⁶ D. V. Efremov, A. Shtyk, A. W. Rost, C. Chamon, A. P. Mackenzie, and J. J. Betouras, Phys. Rev. Lett, **123**, 207202 (2019).
 - ⁷ A. Thamizhavel, T. Takeuchi, T. Okubo, M. Yamada, R. Asai, S. Kiritani, A. Galatanu, E. Yamamoto, T. Ebihara, Y. Inada, R. Settai, and Y. Ōnuki, Phys. Rev. B **68**, 054427 (2003).
 - ⁸ L. Balicas, S. Nakatsuji, H. Lee, P. Schlottmann, T. P. Murphy, and Z. Fisk, Phys. Rev. B **72**, 064422 (2005).
 - ⁹ L. Zhao, E. A. Yelland, J. A. Bruin, I. Sheikin, P. C. Canfield, V. Fritsch, H. Sakai, A. P. Mackenzie, and C. W. Hicks, Phys. Rev. B **93**, 195124 (2016).
 - ¹⁰ G. G. Marcus, D.-J. Kim, J. A. Tutmaher, J. A. Rodriguez-Rivera, J. O. Birk, C. Niedermeyer, H. Lee, Z. Fisk, and C. L. Broholm, Phys. Rev. Lett, **120**, 097201 (2018).
 - ¹¹ J. Park, H. Sakai, O. Erten, A. P. Mackenzie, and C. W. Hicks, Phys. Rev. B **97**, 024411 (2018).
 - ¹² J. Park, H. Sakai, A. P. Mackenzie, and C. W. Hicks, Phys. Rev. B **98**, 024426 (2018).
 - ¹³ E. Mun, S. L. Budko, A. Kreyssig, and P. C. Canfield, Phys. Rev. B **82**, 054424 (2010).
 - ¹⁴ W. Knafo, D. Aoki, D. Vignolles, B. Vignolle, Y. Klein, C. Jaudet, A. Villaume, C. Proust, and J. Flouquet, Phys. Rev. B **81**, 094403 (2010).
 - ¹⁵ S. L. Budko, P. C. Canfield, M. A. Avila, and T. Takabatake, Phys. Rev. B **75**, 094433 (2007).
 - ¹⁶ P. C. Canfield, T. Kong, U. S. Kaluarachchi, and N. H. Jo, Phil. Mag. **96**, 84 (2016).
 - ¹⁷ P. C. Canfield, Rep. Prog. Phys. **83**, 016501 (2020).
 - ¹⁸ M. E. Fisher, Phil. Mag. **7**, 1731 (1962).
 - ¹⁹ S. Ghosh, F. Brückner, A. Nikitin, V. Grinenko, M. Elander, A. P. Mackenzie, H. Luetkens, H.-H. Klauss, and C. W. Hicks, Rev. Sci. Instrum. **91**, 103902 (2020).
 - ²⁰ L. C. Chapon, P. Manuel, P. G. Radaelli, C. Benson, L. Perrott, S. Ansell, N. J. Rhodes, D. Raspino, D. Duxbury, E. Spill, and J. Norris, Neutron News **22**, 22 (2011).
 - ²¹ O. Arnold, J. Bilheux, J. Borreguero, A. Buts, S. Campbell, L. Chapon, M. Doucet, N. Draper, R. Ferraz Leal, M. Gigg, V. Lynch, A. Markvardsen, D. Mikkelson, R. Mikkelson, R. Miller, K. Palmen, P. Parker, G. Passos, T. Perring, P. Peterson, S. Ren, M. Reuter, A. Savici, J. Taylor, R. Taylor, R. Tolchenov, W. Zhou, and J. Zikovsky, Nuc. Inst. Meth. Phys. A **764**, 156 (2014).
 - ²² V. Petříček, M. Dušek, and L. Palatinus, Z. Kristallogr. Cryst. Mater. **229**, 345 (2014).
 - ²³ The mCif files may be viewed using the MVISUALIZE software at www.cryst.ehu.es.
 - ²⁴ J. Perez-Mato, S. Gallejo, E. Tasci, L. Elcoro, G. de la Flor, and M. Aroyo, Annual Review of Materials Research **45**, 217 (2015).
 - ²⁵ See Supplemental Material at *link to be inserted* for Cif and mCif files.
 - ²⁶ O. Sologub, K. Hiebl, P. Rogl, H. Noël, and O. Bodak, J. Alloys Compd. **210**, 153 (1994).
 - ²⁷ P. J. Becker and P. Coppens, Acta Cryst. A **30**, 129 (1974).
 - ²⁸ D. M. Hatch and H. T. Stokes, J. App. Cryst. **36**, 951 (2003).
 - ²⁹ H. T. Stokes, D. M. Hatch, and B. J. Campbell, ISOTROPY Software Suite, iso.byu.edu.
 - ³⁰ V. K. Anand, A. D. Hillier, D. T. Adroja, D. D. Khalyavin, P. Manuel, G. Andre, S. Rols, and M. M. Koza, Phys. Rev. B **97**, 184422 (2018).

- ³¹ A. D. Hillier, D. T. Adroja, P. Manuel, V. K. Anand, J. W. Taylor, K. A. McEwen, B. D. Rainford, and M. M. Koza, *Phys. Rev. B* **85**, 134405 (2012).
- ³² M. Mostovoy, *Phys. Rev. Lett.* **96**, 067601 (2006).
- ³³ A. J. Princep, H. L. Feng, Y. F. Guo, F. Lang, H. M. Weng, P. Manuel, D. Khalyavin, A. Senyshyn, M. C. Rahn, Y. H. Yuan, Y. Matsushita, S. J. Blundell, K. Yamaura, and A. T. Boothroyd, *Phys. Rev. B* **102**, 104410 (2020).
- ³⁴ H. L. Feng, C.-J. Kang, P. Manuel, F. Orlandi, Y. Su, J. Chen, Y. Tsujimoto, J. Hadermann, G. Kotliar, K. Yamaura, E. E. McCabe, and M. Greenblatt, *Chem. Mater.* **33**, 4188 (2021).
- ³⁵ E. Fawcett, H. Alberts, V. Y. Galkin, D. Noakes, and J. Yakhmi, *Rev. Mod. Phys.* **66**, 25 (1994).
- ³⁶ D. K. Pratt, M. G. Kim, A. Kreyssig, Y. B. Lee, G. S. Tucker, A. Thaler, W. Tian, J. L. Zarestky, S. L. Budko, P. C. Canfield, B. N. Harmon, A. I. Goldman, and M. R. J, *Phys. Rev. Lett.* **106**, 257001 (2011).
- ³⁷ P. Lee, T. Rice, and P. Anderson, *Solid State Commun.* **88**, 1001 (1993).
- ³⁸ R. Fleming, D. Moncton, J. Axe, and G. Brown, *Phys. Rev. B* **30**, 1877 (1984).
- ³⁹ S. Avci, O. Chmaissem, J. Allred, S. Rosenkranz, I. Eremin, A. V. Chubukov, D. Bugaris, D. Chung, M. G. Kanatzidis, J.-P. Castellán, J. A. Schlueter, H. Claus, D. D. Khalyavin, P. Manuel, A. Daoud-Aladine, and R. Osborn, *Nat. Commun.* **5**, 1 (2014).
- ⁴⁰ J. M. Allred, K. M. Taddei, D. E. Bugaris, M. J. Krogstad, S. H. Lapidus, D. Y. Chung, H. Claus, M. G. Kanatzidis, D. E. Brown, J. Kang, R. M. Fernandes, I. Eremin, S. Rosenkranz, O. Chmaissem, and R. Osborn, *Nat. Phys.* **12**, 493 (2016).
- ⁴¹ G. Yumnam, Y. Chen, Y. Zhao, A. Thamizhavel, S. K. Dhar, and D. K. Singh, *Phys. Status Solidi B* **13**, 1900304 (2019).
- ⁴² W. Muir and J. Ström-Olsen, *Phys. Rev. B* **4**, 988 (1971).
- ⁴³ M. I. Aroyo, A. Kirov, C. Capillas, J. M. Perez-Mato, and H. Wondratschek, *Acta Cryst. A* **62**, 115 (2006).
- ⁴⁴ R. B. Von Dreele, J. D. Jorgensen, and C. G. Windsor, *J. Appl. Cryst.* **15**, 581 (1982).