

## Pathogenesis of periodontitis

Saliem, Saif; Bede, Salwan; Cooper, Paul; Abdulkareem, Ali; Milward, Michael; Abdullah, Bashar

DOI:

[10.1016/j.jdsr.2022.09.001](https://doi.org/10.1016/j.jdsr.2022.09.001)

License:

Creative Commons: Attribution-NonCommercial-NoDerivs (CC BY-NC-ND)

*Document Version*

Publisher's PDF, also known as Version of record

*Citation for published version (Harvard):*

Saliem, S, Bede, S, Cooper, P, Abdulkareem, A, Milward, M & Abdullah, B 2022, 'Pathogenesis of periodontitis: A potential role for epithelial- mesenchymal transition', *Japanese Dental Science Review*, vol. 58, pp. 268-278.  
<https://doi.org/10.1016/j.jdsr.2022.09.001>

[Link to publication on Research at Birmingham portal](#)

### General rights

Unless a licence is specified above, all rights (including copyright and moral rights) in this document are retained by the authors and/or the copyright holders. The express permission of the copyright holder must be obtained for any use of this material other than for purposes permitted by law.

- Users may freely distribute the URL that is used to identify this publication.
- Users may download and/or print one copy of the publication from the University of Birmingham research portal for the purpose of private study or non-commercial research.
- User may use extracts from the document in line with the concept of 'fair dealing' under the Copyright, Designs and Patents Act 1988 (?)
- Users may not further distribute the material nor use it for the purposes of commercial gain.

Where a licence is displayed above, please note the terms and conditions of the licence govern your use of this document.

When citing, please reference the published version.

### Take down policy

While the University of Birmingham exercises care and attention in making items available there are rare occasions when an item has been uploaded in error or has been deemed to be commercially or otherwise sensitive.

If you believe that this is the case for this document, please contact [UBIRA@lists.bham.ac.uk](mailto:UBIRA@lists.bham.ac.uk) providing details and we will remove access to the work immediately and investigate.



# Pathogenesis of periodontitis – A potential role for epithelial-mesenchymal transition<sup>☆</sup>

Saif S. Saliem<sup>a,\*</sup>, Salwan Y. Bede<sup>a</sup>, Paul R. Cooper<sup>b</sup>, Ali A. Abdulkareem<sup>a,\*</sup>, Michael R. Milward<sup>c</sup>, Bashar H. Abdullah<sup>a</sup>

<sup>a</sup> College of Dentistry, University of Baghdad, P.O. Box 1417, Bab Al Mudam, Baghdad, Iraq

<sup>b</sup> Faculty of Dentistry, Sir John Walsh Research Institute, University of Otago, P.O. Box 56, Dunedin 9054, New Zealand

<sup>c</sup> School of Dentistry, University of Birmingham, 5 Mill Pool Way, B5 7EG Birmingham, UK

## ARTICLE INFO

### Article history:

Received 20 May 2022

Received in revised form 11 August 2022

Accepted 5 September 2022

### Keywords:

Epithelial mesenchymal transition

Periodontitis

Transcription factor

Cell adhesion

Growth factor

Periodontal pathogen

## ABSTRACT

Epithelial mesenchymal transition (EMT) is a process comprising cellular and molecular events which result in cells shifting from an epithelial to a mesenchymal phenotype. Periodontitis is a destructive chronic disease of the periodontium initiated in response to a dysbiotic microbiome, and dominated by Gram-negative bacteria in the subgingival niches accompanied by an aberrant immune response in susceptible subjects. Both EMT and periodontitis share common risk factors and drivers, including Gram-negative bacteria, excess inflammatory cytokine production, smoking, oxidative stress and diabetes mellitus. In addition, periodontitis is characterized by down-regulation of key epithelial markers such as E-cadherin together with up-regulation of transcriptional factors and mesenchymal proteins, including Snail1, vimentin and N-cadherin, which also occur in the EMT program. Clinically, these phenotypic changes may be reflected by increases in micro-ulceration of the pocket epithelial lining, granulation tissue formation, and fibrosis. Both in vitro and in vivo data now support the potential involvement of EMT as a pathogenic mechanism in periodontal diseases which may facilitate bacterial invasion into the underlying gingival tissues and propagation of inflammation. This review surveys the available literature and provides evidence linking EMT to periodontitis pathogenesis.

© 2022 The Authors. Published by Elsevier Ltd on behalf of The Japanese Association for Dental Science. This is an open access article under the CC BY-NC-ND license (<http://creativecommons.org/licenses/by-nc-nd/4.0/>).

## Contents

1. Introduction	269
2. Types of EMT	269
3. Biomarkers of EMT	270
4. Features of EMT	270
4.1. EMT-associated cellular junctions and cytoskeletal changes	270
4.2. Loss of cell-extracellular matrix adhesion and motility	271
5. Role of bacteria in promoting EMT	272
6. Pathogenesis of periodontitis	272
7. In vitro, animal model and clinical evidence supporting a role for EMT in periodontal disease	273
8. Summary	274
Acknowledgment	274
Conflicts of interest	275
References	275

<sup>☆</sup> Scientific field of dental Science: Periodontology, molecular/cellular biology, microbiology, immunology.

\* Corresponding authors.

E-mail addresses: [Drsaiifjuma@codental.uobaghdad.edu.iq](mailto:Drsaiifjuma@codental.uobaghdad.edu.iq) (S.S. Saliem), [ali.abbas@codental.uobaghdad.edu.iq](mailto:ali.abbas@codental.uobaghdad.edu.iq) (A.A. Abdulkareem).

## 1. Introduction

Periodontitis is a chronic inflammatory disease affecting the tooth's supporting structures. The disease is initiated and propagated by a dysbiotic dental biofilm, predominated by Gram-negative anaerobes, and in the presence of an aberrant immune response in a genetically susceptible host [1]. If periodontitis-associated tissue destruction is not diagnosed and appropriately managed it can lead to hard and soft tissue breakdown, and ultimately tooth loss [2]. According to the World Health Organization, between 35% and 50% of the global population are affected by periodontitis with different levels of severities [3]. In 2015, the Global Burden of Disease reported that the prevalence of severe periodontitis worldwide was 7.4%, while the prevalence of milder forms of periodontitis may be as high as 50% [4]. Worldwide, data demonstrate that periodontitis seriously affects an individuals' quality of life and has profound economic and health burdens [5–8]. Furthermore, periodontal disease-associated inflammatory events are not isolated from other organs and bodily systems. The local dysbiotic subgingival microbiota can upregulate systemic levels of cytokines either directly by entry of periodontal pathogens into the blood stream or indirectly due to the inflammatory microenvironment of periodontal pockets acting as a focus for proinflammatory cytokine production. These findings are supported by a relatively large number of studies that highlight the association between periodontitis and several systemic diseases and conditions, including diabetes mellitus, cardiovascular disease, adverse pregnancy outcomes (APO), gastrointestinal disease, osteoporosis and cancers [9–13].

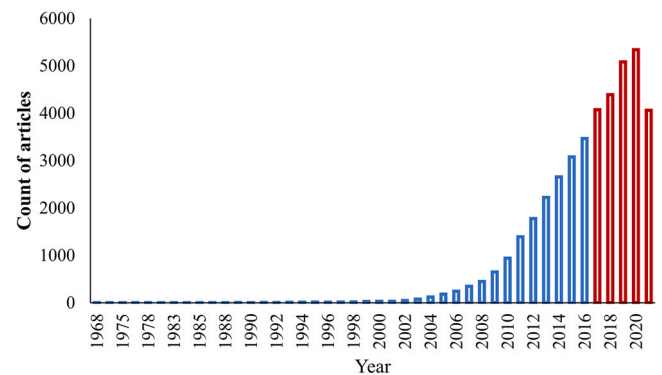
Epithelial-mesenchymal transition (EMT) is a process by which epithelial cells acquire a mesenchymal phenotype following complete or partial loss of their original phenotype [14–16]. The EMT process requires a series of orchestrated cellular and molecular events including an increased resistance to apoptosis and anoikis, loss of apico-basal polarity, dissociation of adhesion proteins, and cytoskeleton architectural reorganization. These events are associated with the simultaneous up-regulation of mesenchymal phenotypic markers and down-regulation of epithelial phenotypic markers [14–17]. Transitioned cells consequently exhibit increased mobility together with increased enzymatic activity which results in remodeling and degradation of the underlying basement membrane (BM) [18,19]. The outcome of these events can be a compromise in the integrity of epithelial-barrier function. Notably, these tissue changes are a hallmark of periodontal pocketing and enable the invasion of periodontal pathogens to the underlying mucosal tissues [20]. Over recent decades the interest in the role of EMT in developmental and disease biology has grown exponentially with the majority of the research on EMT being published in the past 5 years (Fig. 1). Notably, over half of these studies relate to cancer metastasis.

Interestingly, there are several risk factors and promoters common to both periodontitis progression and EMT. EMT-inducers include Gram-negative bacteria and their virulence factors, exposure to chronically elevated levels of inflammatory cytokines, tobacco smoke exposure and hypoxia [21–24]. Furthermore, systemic diseases, such as diabetes mellitus, have been shown to be associated with EMT-induction [25,26]. The association of these pathogenic and environmental risk factors with periodontitis is well-established and this highlights the potential involvement of EMT as a pathogenic mechanism in periodontitis. Consequently, this review surveys the current literature to identify evidence for the potential involvement of EMT in periodontitis pathogenesis.

## 2. Types of EMT

Developmental biologists have defined EMT “as a phenotypic transformation linked with metastasis and a morphological

conversion taking place at particular sites within embryonic epithelia to produce individual migratory cells” [27]. Comparable ob-

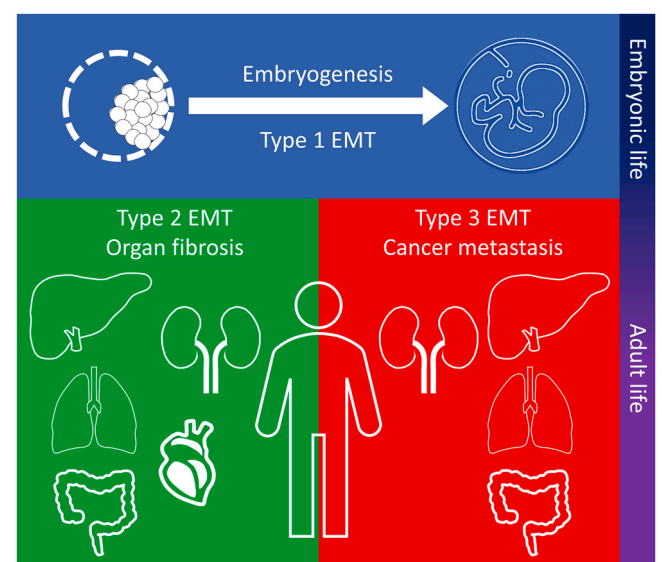


**Fig. 1.** Growth of the EMT-related literature. The first experimental analysis of epithelial-mesenchymal transition (EMT) in development was published in 1968. The relationship of EMT to growth factors was identified in 1989 and the transcriptional regulation of EMT was identified in 1994. More recent studies link EMT to metastasis, organ fibrosis and stem cells.

(retrieved from PubMed at <https://pubmed.ncbi.nlm.nih.gov/> using the search terms: epithelial-mesenchymal transition, epithelial-mesenchymal transformation in April 2022)

servations are also reported by cancer researchers [28–30]. Consequently, based on the biological context, EMT has now been classified into three types (Fig. 2) [31,32].

Type 1 EMT was first highlighted in the 1960 s by the pioneering work of Elizabeth Hay using chick embryos [33]. During embryonic life, EMT and its reverse process, mesenchymal-epithelial transition, are physiological processes necessary for implantation of the embryo and its subsequent transition into a three-layered structure during gastrulation [34]. EMT is an integral mechanism in organ and tissue formation, including neural crest tissue development [35,36], heart valve development [36], and Müller duct regression [37]. Data derived from mouse developmental models have identified that EMT is regulated by several key signaling pathways. Studies of aberrant Wnt expression during gastrulation have shown abnormal embryonic morphology due to unsuccessful EMT induction [38].



**Fig. 2.** Types of epithelial-mesenchymal transition (EMT). Type 1 EMT is evident during embryonic life and considered as an integral mechanism for the gastrulation and development of the organs. During adult life, type 2 and 3 EMT are classified as pathological processes responsible for the fibrosis of organs and cancer metastasis, respectively.

Further studies using chick embryos have demonstrated that blocking Wnt8 signaling results in failure of primitive streak formation [39], and similar outcomes have also been obtained in studies of Wnt3 signaling in developing mice [40]. Further analysis has demonstrated that Wnt signaling is mediated by members of the transforming growth factor (TGF)- $\beta$  superfamily, including Nodal and vegetal-1, and their deficiency can also lead to EMT failure with morphological consequences, such as embryonic asymmetry [41,42].

During adult life, EMT is regarded as a pathological process either involved in organ fibrosis (Type 2) or cancer metastasis (Type 3). Chronic inflammation is reported to be a potent inducer of Type 2 EMT and is responsible for compromising epithelial barrier integrity and organ dysfunction [28]. Consequently, chronic and persistent inflammation leading to increased production of inflammatory cytokines and chemokines, such as TGF- $\beta$ 1 and interleukins (IL), is considered a major factor in the development of EMT type 2 [43]. Although inflammation is regarded as a normal tissue defense mechanism, an aberrant and prolonged inflammatory response has been reported to be involved in EMT induction [44–46]. EMT has therefore been shown to arise and contribute to various types of inflammation-associated fibrosis including ones involved in lung, liver, and kidney tissues [47]. Notably, Type 2 EMT is also reported as being essential for scar tissue formation and tissue repair [48,49]. Indeed, data indicate that over-expression of key transcriptional regulators of EMT in human keratinocytes in vitro are responsible for increasing wound healing processes involving cell proliferation and desmosome function [50].

In Type 3 EMT, reports from studies utilizing mouse and in vitro cell models have shown that epithelial cancer cells are characterized by increased expression of mesenchymal markers, including vimentin, fibroblast specific protein (FSP)-1, and  $\alpha$ -smooth muscle actin (SMA), and down-regulated expression of epithelial markers, including E-cadherin and  $\beta$ -catenin [51]. Current data indicates that neoplastic cells in the early stages of carcinoma exist in an epithelial-like state, but as the tumor progresses they gradually acquire mesenchymal characteristics and the resulting quasi-mesenchymal cells then become resistant to various treatment regimens [52]. In addition to elevated therapeutic resistance, activation of an EMT program in mammary carcinoma cells has led to a tumor-initiating state, also termed the cancer stem cell state [53,54]. This EMT-induced acquisition of stemness can also occur in several other types of carcinomas. Data from many research groups have suggested that the EMT program is an integral metastatic mechanism found in all types of carcinomas [55–58].

### 3. Biomarkers of EMT

During EMT, expression of certain biomarkers is markedly changed (Table 1) and these are considered as the hallmarks of the EMT process [59,60]. Nevertheless, definition of EMT is not limited to molecular changes and includes several other cellular and behavioral criteria. Recently the case definition of EMT was extensively reviewed by Yang and coauthors [16] and they outlined a set of criteria to enable diagnosis of cells undergoing EMT. Several of these changes are also described in more detail below.

E-cadherin is a calcium ion-dependent transmembrane protein, it is the basic structural unit forming adherens junctions which unite the epithelial cells into a coherent tissue structure [61]. During morphogenesis, cadherins regulate cell arrangement, their localisation, and movement in response to extracellular signaling [62]. Snail1 is a zinc finger protein that, in humans is encoded by the *SNAIL1* gene [63], and belongs to a family of transcription factors (TFs) that promote the repression of E-cadherin [64]. Snail1 activity is considered a major EMT-inducer as it is highly expressed during the EMT process at a relatively early stage. In addition, Snail1 is responsible for inducing and modulating other EMT-TFs, including ZEB1/2 and Slug [64], which collectively activate the EMT programs during development, fibrosis, and

**Table 1**

Molecular markers, and their expression level changes, which occur during EMT.

Category/Function	Biomarker	EMT associated changes	Publications
Cell-cell attachment molecules	E-cadherin	↓	[28,78]
	ZO-1, Occludins, Claudins	↓	[79,80]
	Desmoplakin, plakoglobin	↓	[81]
	N-cadherin	↑	[82]
Cytoskeletal molecules	$\beta$ -catenin	↓	[83,84]
	Cytokeratin	↓	[85,86]
	$\alpha$ -SMA	↑	[87]
	Vimentin	↑	[88]
	FSP-1	↑	[89]
Transcriptional factors	Snail, Slug (Snail-2)	↑	[14,83]
	Twist	↑	[90]
	LEF-1	↑	[91]
	ZEB-1	↑	[92]
	NF- $\kappa$ B	↑	[2,93]
	SOX 10	↑	[94,95]
	FOXC2	↑	[96,97]
ECM proteins	Collagen I, III	↑	[98]
	Collagen IV	↓	[99]
	Fibronectin	↑	[45]
	Laminin	↓	[100]
Cell-BM attachment proteins	Integrin $\alpha$ 6 $\beta$ 4	↓	[14]
	Integrin $\alpha$ 5 $\beta$ 1, $\alpha$ V $\beta$ 6	↑	[101,102]
Proteolytic enzymes	MMP-9, -2, -3	↑	[45,103]

Abbreviations: ZO-1: Zonula occludens-1,  $\alpha$ -SMA:  $\alpha$ -smooth muscle actin, FSP-1: Fibroblast-specific protein 1, LEF-1: Lymphoid enhancer-binding factor 1, ZEB-1: zinc finger and homeodomain transcription factor 1, NF- $\kappa$ B: Nuclear factor kappa-light-chain-enhancer of activated B cells, MMP: Matrix metalloproteinase.

cancer progression [65]. Snail1 activity suppresses E-cadherin levels by combining the E-box sequence in the proximal promoter region of the *E-cadherin* gene [66,67], this thereby increases the likelihood of cells acquiring the EMT-phenotype.

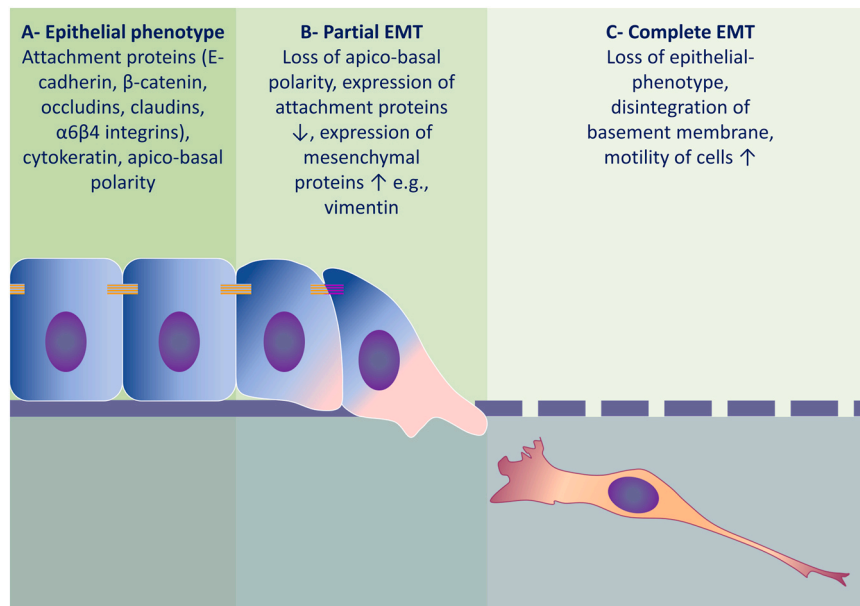
$\beta$ -catenin is a bi-functional protein involved in the regulation and coordination of cell adhesion and gene transcription.  $\beta$ -catenin is responsible for the cytoplasmic anchoring of cadherins [68] and acts as an intracellular signal transducer for the Wnt signaling pathway [69,70]. The cadherin-catenin complex is integral for the formation and maintenance of coherent epithelial layers. In addition, as part of the complex,  $\beta$ -catenin regulates cell growth, and the transmission of contact inhibition signals which are essential to halt mitosis once the epithelial sheet is formed [71].

Vimentin is a type III intermediate filament cytoskeletal protein expressed in mesenchymal cells [72] and is the main cytosolic component of these cells. Consequently, vimentin is often used as a biomarker of mesenchymal cells or to detect cells undergoing EMT [73]. Vimentin plays several roles, including cell regulation, interactions with signaling proteins and adhesion molecules [74,75]. The dynamic nature of vimentin is important for cell flexibility [76] and plasticity to support essential cellular functions and cell re-organization during mitosis [77].

### 4. Features of EMT

#### 4.1. EMT-associated cellular junctions and cytoskeletal changes

Fig. 3 illustrates the progression of EMT-associated molecular and cellular events. Initially there is disruption of polarity and dissociation of the cellular attachment proteins which occurs in target cells in response to extracellular sensing. The TGF- $\beta$  pathway plays a central role in EMT-induction in different tissues [104,105] and the TGF- $\beta$  superfamily members bind to specific cell surface receptors.



**Fig. 3.** Progression of molecular and cellular events in EMT. A) Under homeostatic conditions, epithelial cells form coherent epithelial sheets and express molecules uniquely associated with the epithelial-phenotype, such as E-cadherin,  $\beta$ -catenin, occludins, and  $\alpha$ 6 $\beta$ 4 integrins. B) Exposure of epithelial cells to EMT-inducer(s), e.g., cytokines or Gram-negative bacterial components, triggers the EMT process. Early events include loss of apico-basal polarity followed by downregulation of attachment proteins concomitant with up-regulation of mesenchymal proteins, such as vimentin. At this stage, both epithelial and mesenchymal biomarkers are co-expressed in the same cell and this is defined as partial EMT. C) Prolonged exposure to EMT-inducers results in a complete loss of the epithelial phenotype and acquisition of a mesenchymal phenotype. Transitioned cells exhibit increased motility together with increased expression of matrix metalloproteinases that degrade the basement membrane, thereby, facilitating migration of these mesenchymal cells to the underlying connective tissue.

This binding subsequently results in the intracellular phosphorylation of SMAD2 and SMAD3 which then complex with SMAD4. This complex then translocates to the nucleus where it binds to specific DNA-motifs resulting in regulation of the expression of a relatively large subset of genes which drive the acquisition of the mesenchymal phenotype [106]. This transcriptional activity involves the DNA-binding TFs described above including Snail, Twist, and other basic helix-loop-helix TFs [107,108]. These EMT-TFs further upregulate the expression of TGF- $\beta$  ligands, instigating the establishment of autocrine signaling that drives the EMT process [109,110]. This canonical signaling collaborates with several other signaling pathways, including the phosphatidylinositol 3-kinase (PI3K), mitogen-activated protein kinase (MAPK) and Rho- GTPase pathways, which also contribute to the activation of the EMT program [106]. The combined effect of these TFs is the suppression of expression of epithelial markers responsible for cell attachment and polarity [111,112].

Epithelial cells display apical-basal polarity which is organized by the complexes that are physically and functionally integrated within the cell junction architecture. In vertebrate cells, the localization of these polarity complexes defines the cellular compartments. For instance, partitioning-defective proteins and their complexes, and the Crumbs complexes are located apically in association with tight junctions (TJs) and define the apical compartment, while the location of Scribble (SCRIB) defines the basolateral compartment [113]. Consequently, the removal of the epithelial junctions during EMT confers a loss of apical-basal polarity. The association between junctional and polarity proteins is observed when the expression of E-cadherin is down-regulated and this is a key feature of cells undergoing EMT. Subsequently, SCRIB is prevented from interacting with the lateral plasma membrane [114], and the decreasing SCRIB and/or E-cadherin levels reduce adhesion and increase cell motility [115].

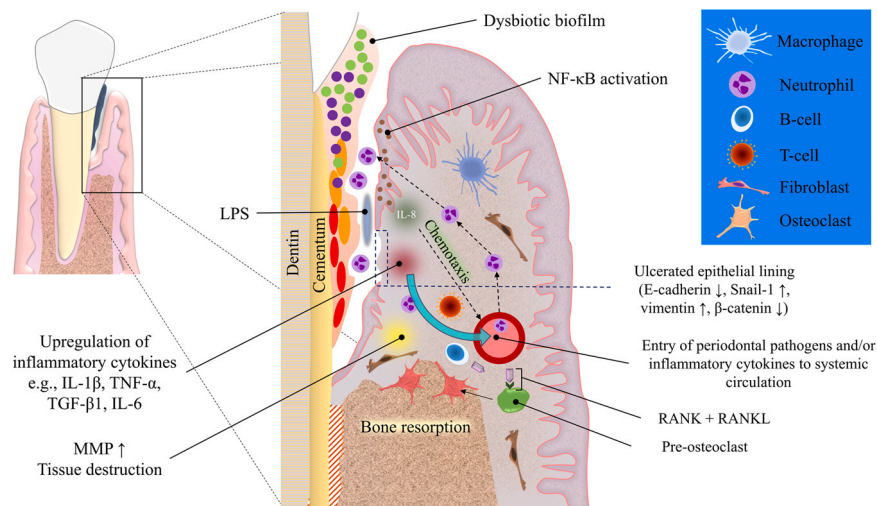
During EMT, alongside the down-regulation of the expression of E-cadherin there is structural reorganization of other epithelial markers, in particular cytoskeletal cytokeratin proteins. Conversely, the expression of markers associated with the mesenchymal-

phenotype are activated. Subsequently, the well characterized marker of EMT induction, N-cadherin, is involved in the process termed ‘cadherin switching’, whereby epithelial E-cadherin is replaced by its mesenchymal counterpart, N-cadherin [116,117]. Other epithelial junctions are then removed and the junctional proteins become translocated and/or degraded. For instance, the dissolution of TJs is accompanied by decrease in claudin and occludins expression and diffusion of zonula occludens (ZO)-1, which is responsible for the apical seal between the cells [118]. During the destabilization of adherens junctions, E-cadherin is cleaved at the plasma membrane and subsequently degraded [119]. Consequently,  $\beta$ -catenin is released and translocates to the nucleus where it collaborates with T-cell factor and lymphoid enhancer factor to activate Wnt gene expression [120]. Notably, and as has been highlighted above, the blocking of Wnt/ $\beta$ -catenin signaling results in inhibition of EMT and is reported to prevent renal fibrosis [121]. The p120-catenin (catenin- $\delta$ 1) also accumulates in the nucleus and is involved in transcription regulation after decreasing E-cadherin levels [122]. As EMT progresses, expression of junctional proteins is transcriptionally repressed and this is also implicated in the loss of epithelial junctions and adhesions [112,123,124].

#### 4.2. Loss of cell-extracellular matrix adhesion and motility

Cells undergoing EMT rearrange their cortical actin to allow for dynamic cell elongation and directional movement [34,119,125]. The transitioned cells are characterized by increased contractility and the formation of actin stress fibers [126], however, the molecular mechanisms that control actin dynamics during EMT remain to be entirely elucidated. Notably, some Rho-GTPases have been shown to regulate the dynamics and rearrangement of actin during EMT, e.g., RhoA promotes actin stress fiber formation, while Ras-related C3 botulinum toxin substrate 1 and cell division control protein 42 homolog mainly promote the formation of motility-associated cellular structures, such as lamellipodia and filopodia [127,128]. Additionally, the migratory phenotype is associated with the up-





**Fig. 4.** Pathogenesis of periodontitis. Dysbiosis of subgingival microbiome results in an increased populations of red and orange bacteria such as *Porphyromonas gingivalis* and *Fusobacterium nucleatum*. The virulence factors described in the main text body trigger an inflammatory response mainly via Toll-like receptor signaling which activates intracellular NF- $\kappa$ B which in turn increases interleukin (IL) production. IL-8, in particular, acts as a chemotactic agent for inflammatory cells such as neutrophils and macrophages, recruiting them from nearby blood vessels. Cellular (T-cells) and humoral (B-cells) immune cells also increase in numbers due to the chemotactic gradients generated in association with chronic inflammation. These inflammatory events lead to further escalation of inflammatory mediator production which can compromise the integrity of the epithelial pocket lining and drive the EMT process. Additionally, tissue destruction and bone resorption increase due to overexpression of matrix metalloproteinases and RANKL, respectively. Subsequent exposure of the underlying connective tissue and increased vascular permeability facilitate the entry of periodontal pathogens and/or inflammatory cytokines to the circulation thereby contributing to the impact of periodontitis on systemic diseases.

regulation of vimentin which is essential for the process of cellular protrusion formation and the maturation of actin networks [129].

The EMT-phenotype is further characterised by the release of matrix metalloproteinases (MMP) which facilitate cell invasion and migration by their degradation of the underlying basement membrane (BM). The association between EMT and MMP has been particularly well demonstrated in mouse xenograft models of human gastric cancer which have shown that increased MMP-9 expression, together with the EMT-phenotype, increased the frequency of lung metastases [130]. Changes in the levels of MMP-mediated EMT are also associated with the substitution of epithelial integrins with mesenchymal-associated molecules. During EMT, epithelial integrin  $\alpha 6 \beta 4$  is down-regulated while the mesenchymal integrin  $\alpha 5 \beta 1$  is concomitantly up-regulated, and this increases the tendency of cells to adhere to fibronectin in the extracellular matrix (ECM). Additionally, alteration of integrin expression itself triggers EMT via activating signaling, including the TGF- $\beta$ /Smad pathway, and integrin-linked kinases [131].

## 5. Role of bacteria in promoting EMT

The role of bacteria, especially Gram-negative anaerobes, in the activation of EMT has now been investigated in many studies. *Helicobacter pylori*, is a microaerophilic Gram-negative bacteria found primarily in the stomach and is associated with loss of epithelial integrity in the mucosa leading to gastric ulceration. The injection of *H. pylori* proteins into gastric epithelial cells has been shown to result in the disruption of epithelial barrier function [132]. The effects of this bacterium reportedly occur due to its ability to down-regulate ZO1-mediated TJs causing dissociation of cell-cell attachment and loss of the apical seal, thereby facilitating cellular invasion into underlying tissues. Persistent exposure of gastric epithelium to *H. pylori* has been shown to result in morphological changes indicative of mesenchymal-like cells [132]. In addition, specific toxins and virulence factors from this bacterium, e.g., CagA, are can induce morphological changes and increase cellular migratory ability [133–135]. These data support the role of *H. pylori* as a major risk factor for gastric and duodenal ulceration and gastric carcinoma which potentially act via EMT-induction [136,137].

*In vitro* and *in vivo* studies have demonstrated that EMT-induction can occur in response to bacterial lipopolysaccharide (LPS)-toll-like receptor (TLR)–4 mediated nuclear factor kappa B (NF- $\kappa$ B) signaling [138]. Intranasal inoculation of mice with LPS results in increased Snail activity and subsequent down-regulation of claudins, the subunits of TJ, breaking the apical epithelial seal via activation of TLR-4 signaling *in vivo* [139]. Additionally, colonization of the nasal epithelium with *Streptococcus pneumoniae* and *Haemophilus influenza* has been shown to cause down-regulation of claudins, also mediated by TLR-dependent mechanisms. The subsequent loss of epithelial coherence enabled invasion of these bacteria to the underlying tissues. Furthermore, findings obtained using an *in vitro* model of lung disease which used primary human bronchial epithelial cells, demonstrated a similar pattern of claudin down-regulation in response to bacterial exposure following increased expression of Snail, which required activation of the p38 MAPK/TGF- $\beta$  signaling [139,140].

## 6. Pathogenesis of periodontitis

Initiation and progression of periodontitis is attributed to key bacteria in the dental biofilm which stimulate the inflammatory immune response, leading to tissue damage in susceptible individuals (Fig. 4). Indeed, periodontal disease is known to be the result of complex interactions between the pathogenic subgingival biofilm and the host's immune-inflammatory responses. The subgingival microbiota has been reported to contain more than 700 bacteria species [141]. However, only a relatively small number of bacteria are reportedly to be closely associated with periodontitis progression, and includes the key periopathogens *Fusobacterium nucleatum*, *Porphyromonas gingivalis*, *Tannerella forsythia*, *Treponema denticola*, and *Aggregatibacter actinomycetemcomitans* [142].

The first physical barrier between the bacteria of the dental biofilm and the underlying mucosal connective tissue (CT) is the sulcular and junctional epithelium (JE). Periodontitis development not only relies on the change to a dysbiotic biofilm, but also the presence of host risk factors. For instance, an aberrant immune response, such as defective chemotaxis or hyperresponsive reactive oxygen species production by polymorphonuclear leukocytes (PMN),

in the presence of the dysbiotic biofilm, leads to a chain of tissue destructive events in the periodontium [143]. Furthermore, as the biofilm advances apically, the body responds by the apical migration of the JE resulting in periodontal pocket formation. With the increasing periodontal pocket depth, the complexity and diversity of the subgingival microbiome is increased and is dominated by Gram-negative anaerobes. Key periodontal pathogens also produce several potent virulence factors, e.g. fimbriae and lectin-type adhesins, a polysaccharide capsule, LPS, hemagglutinins, potent proteinases, toxic products of metabolism, outer membrane vesicles, and numerous enzymes, which trigger and maintain an intense immune response which involves subsequent inflammatory mediator release from the pocket epithelium [144]. Increased expression of MMPs and prostaglandin E2 by the host in addition to receptor activator of nuclear factor-kappa B ligand (RANKL) stimulation participate in increasing the pocket depth and drive alveolar bone resorption [145,146]. Under normal physiologic conditions, bone remodeling is orchestrated by RANKL and its antagonist osteoprotegerin (OPG) [147]. The RANKL/OPG system is disrupted during periodontitis as the levels of RANKL are markedly upregulated; thereby, overwhelming the decoy action of OPG and tipping the balance towards increased osteolytic activity [148]. Interestingly, RANKL can induce EMT via activating NF- $\kappa$ B signaling pathway [149,150] and increasing nuclear translocation of EMT-associated transcription factors, such as Snail and Twist [149]. In the healthy periodontium, neutrophils are resident in relatively small numbers, however, once the bacterial infection induces the host pro-inflammatory response; neutrophils are recruited in relatively large numbers and release enzymes and oxygen radicals which aim to reduce the bacterial load. There is reportedly an exaggerated neutrophilic response during periodontal disease and the molecules which aim to kill bacteria also result in local tissue damage, further exacerbating the immune response resulting in a non-resolving chronic inflammatory lesion [151].

Within the periodontal pocket, the early and initial response of the host to the dysbiotic subgingival biofilm is characterised by the recruitment of inflammatory cells [152]. At later stages of disease, the growing populations of immune cells also contribute to the inflammatory cytokine milieu which is increasingly rich in cytokines, such as TNF- $\alpha$ , IL-1, IL-4, IL-10, interferon- $\gamma$ , and TGF- $\beta$  [153]. In addition, CD4+ T-cells produce RANKL promoting bone breakdown and absorption [154].

The loss of epithelial integrity consequently provides a portal for entry of the periodontal bacteria into the underlying CT where key fibroblast populations participate in the defense mechanism also by secreting increased levels of inflammatory cytokines. In addition, they secrete a fibrous ECM that is aimed at walling off the inflammatory site to limit the invasion of the periodontal bacteria into deeper tissues [155,156]. Gingival fibroblasts under disease conditions can also increase their secretion of proteolytic enzymes and pro-inflammatory proteins, e.g., MMP-2 and prostaglandin E2 [157]; which contribute to soft tissue destruction and bone resorption. This inflammatory environment therefore contains conditions which are potent for the local driving of EMT.

## 7. *In vitro*, animal model and clinical evidence supporting a role for EMT in periodontal disease

It is well known that the inflammation aims to provide protection which limits the bacterial invasion. However, when the inflammatory response does not resolve and becomes chronic, there is a disruption of the epithelial barrier exposing the CT to periodontal pathogens which further contribute to the local inflammatory response [158]. Notably, the increased amount of the granulation tissue in the periodontal pockets indicates fibrosis which, together with loss of epithelial integrity, are hallmarks of Type 2 EMT [18]. Implication of EMT as a pathogenic mechanism of gingival fibrosis

associated with disruptions of the basement membrane was previously indicated by several studies [45,100,159]. Gingival biopsies from periodontitis patients suggested that remnant embryonic cells contribute to the development of the reactive lining epithelium of periodontal pockets [160]. Immunohistochemical and real-time PCR analyses showed that a Hertwig's epithelial root sheath (HERS) cell line co-expresses mesenchymal markers (vimentin and N-cadherin) and epithelial proteins (cytokeratin14, E-cadherin, and p63) when stimulated with inflammatory cytokines [161]. Consistent results were reported by Itaya et al. (2017) who demonstrated that fragmented HERS in periodontal ligament (PDL) underwent EMT when stimulated with TGF- $\beta$ 1, where the expression of E-cadherin was downregulated with associated upregulation of N-cadherin and extracellular matrix proteins [162]. Additionally, multi-lineage potential was observed in stem cells present in the epithelial cell rests of Malassez of the PDL via EMT leading to co-expression of both epithelial and mesenchymal markers in these cells [163]. Granulation tissues isolated from periodontal pockets, infected with red complex bacteria, exhibited strong expression of Collagen type I and mesenchymal/fibroblastic cells of embryonic origin [164]. This could indicate that EMT is a major contributor to increasing resident fibroblast populations resulting in fibrosis of periodontal pockets and non-resolving chronic inflammatory lesion.

Indeed, evidence indicate that periodontal pathogens invade relatively deeply into tissues penetrating through the inflamed and damaged periodontal pocket epithelium [156,165,166]. Bleeding on probing (BOP) is evident in active periodontal pockets and this clearly indicates the presence of micro-ulceration of the pocket epithelium [144,167]. The cellular and tissue changes present in disease combined with the presence of key cytokines and other molecular mediators implicate the potential involvement of EMT as a mechanism in periodontal disease progression. Indeed, several recent studies have now shown EMT-associated changes in periodontally diseased tissues. For example, gingival samples from patients with periodontal disease demonstrate increased expression of fibronectin and integrin  $\alpha$ v $\beta$ 6 in the CT, and epithelial cell cultures derived from the same patient showed an increased expression of fibronectin, Slug, MMP-9, MMP-13, and MMP-2 [168,169]. Consistently, the expression of the epithelial  $\alpha$ v $\beta$ 6 Integrin was downregulated in gingival epithelial cell cultures exposed to multiple virulence factors derived from periodontal bacteria [170]. Additionally, expression of proteins involved in Wnt/ $\beta$ -catenin signaling, one of the main EMT-inducing pathways, markedly increased in periodontitis as compared with periodontal health [171,172].

As highlighted above, several bacterial species are regarded as being key to the pathogenesis of periodontitis. One of the most important bacteria is *P. gingivalis*, which is a Gram-negative anaerobe, member of the red complex and is considered a keystone periodontal pathogens that mediates the transition from a symbiotic to dysbiotic dental biofilm [173]. Studies have shown that *P. gingivalis*-infected gingival epithelial cells (GEC) demonstrate activation of anti-apoptotic pathways, e.g., JAK/STAT and PI3K/Akt, signaling which are also involved in the inflammatory and EMT processes [174]. The JAK/STAT pathway activates NF- $\kappa$ B signaling leading to increased cytokine production [175] and the PI3K/Akt pathway, is involved in upregulating TLR-4 mRNA expression in response to bacterial LPS [176]. Phosphorylation of Akt, and its consequent activation, also induces NF- $\kappa$ B signaling which increases the transcription of several anti-apoptotic genes in GECs [177]. Several other periodontal bacteria can also induce host cell NF- $\kappa$ B-mediated responses, promote cell survival, increase cell migration and invasion, and increase the expression of EMT promoting cytokines [178,179]. In addition, *P. gingivalis* exposure increases phosphorylation of the GSK3 $\beta$  enzyme and overexpression of the transcription factors, Slug and Snail, in GECs which increases ZEB1 levels that in turn can inhibit expression of E-cadherin and upregulate vimentin,  $\beta$ -catenin

and MMP-2, -7 and -9. These data are derived from animal and in vitro models of GECs [180]. These molecular changes affect the *P. gingivalis*-infected GECs, resulting in them demonstrating a mesenchymal phenotype [181]. Furthermore, gingival samples obtained from patients with periodontitis have indicated that *P. gingivalis* infection compromises epithelial connections by exploiting internal cellular mechanisms to down-regulate E-cadherin and increase expression of IL-1 $\beta$ . These findings were also supported by results from an experimental animal model following injection *P. gingivalis*-LPS into the rat gingival sulcus [182] and exposing human gingival epithelial cells to *P. gingivalis*-LPS [183]. The same outcomes were observed in both of these studies with E-cadherin being down-regulated [182,183] and IL-1 $\beta$  being up-regulated [182]. Interestingly, treatment with antioxidants, such as vitamin E and ascorbic acid, which are also known anti-EMT agents, was able to restore the impaired epithelial integrity [183]. The potential of *P. gingivalis* to induce EMT is not only limited to the periodontal pocket niche; results from an experimental animal model showed that *P. gingivalis*-LPS injection exacerbated atherosclerosis via TNF- $\alpha$ -induced EMT of endothelial cells [184].

*F. nucleatum* is an opportunistic Gram-negative anaerobe belonging to the orange complex group and is abundantly detected in periodontal disease [11]. It is responsible for altering the microenvironment of the subgingival microbiome and enables colonization with red complex bacteria, thereby providing the bridging between the primary colonizers and the more pathogenic bacteria. The role of *F. nucleatum* in disease is however not only limited to periodontitis but extends to other systemic conditions including APO, gastrointestinal disease, atherosclerosis, and carcinomas [9,11,13,185]. Interestingly, *F. nucleatum* has recently been reported to be involved in driving EMT [186]. Data demonstrate that *F. nucleatum* exposure reduces levels of epithelial markers, including E-cadherin, and increases levels of EMT-associated transcription factors, including Snail and Slug, in the epithelium of progressive colorectal cancer [187] as well as periodontitis [20]. Moreover, ZEB1 levels have been shown to be up-regulated in oral cancer cells when stimulated by *F. nucleatum* [188]. Indeed, both *P. gingivalis* and *F. nucleatum* have been linked to the increased invasiveness of oral squamous cell carcinoma (OSCC) [189–191]. Results from a recent study have shown that *F. nucleatum* can induce EMT via downstream activation of lncRNA MIR4435-2HG/miR-296-5p/Akt2/SNAI1 signaling in OSCC and noncancerous human immortalized oral epithelial cells [192]. Consequently, *F. nucleatum*, potentially promotes increased metastatic ability in OSCC [188]. Similarly, results from a systematic review have suggested that *P. gingivalis* is involved in different stage of OSCC including EMT of malignant cells [193]. Notably, periodontal pathogens reportedly represent a potential risk factor for development of oral cancer [194]; therefore, monitoring patients with severe periodontitis and maintaining their oral hygiene could significantly reduce the risk of developing OSCC [194].

Other studies using an in vitro model of periodontitis, have shown that the exposure of primary oral keratinocytes to *F. nucleatum* and *P. gingivalis*, results in hallmark EMT changes, including up-regulation of vimentin, N-cadherin, MMP-2, and Snail1, along with down-regulation of E-cadherin and an increased migratory ability [20]. These events were also associated with loss of epithelial coherence as indicated by lowering resistance of the epithelial monolayer to the passage of an electric current [20]. Other studies have shown that exposure of oral keratinocytes to *F. nucleatum*, *P. gingivalis* or their components leads to changes in cytokeratin expression and increased transcription of EMT-promoting cytokines, such as TNF- $\alpha$  and IL-6 as well as promoting the migratory ability of epithelial cells [195]. A key EMT risk factor is the chronic exposure to cytokines, of which TGF- $\beta$ 1 is known to be one of the main drivers [105,196]. Notably, periodontitis progression is associated with up-regulation of TGF- $\beta$ 1, as studies of periodontal tissue samples derived from patients with advanced periodontitis showed

significantly higher TGF- $\beta$ 1 levels compared with healthy controls [197].

The potential of periodontal pathogens to induce EMT has been more directly demonstrated in a previous analysis of gingival tissue samples obtained from individuals with advanced periodontitis. Data demonstrated down-regulation of cell adhesion proteins such as E-cadherin and connexins-26 and -43 in the lining epithelium of periodontal pockets [198]. Notably, a direct correlation between the severity of periodontitis and the expression of the EMT biomarkers was demonstrated [199]. Analysis of tissue samples from patients with periodontitis has also demonstrated down-regulation of E-cadherin which is a major indicator of EMT [200]. Additionally, tissue samples from periodontal pockets and subgingival plaque samples demonstrates activation of RANKL transcription, which is also proposed to be an EMT-inducing factor, and this was associated with a significant increase in the levels and presence of *P. gingivalis* at disease sites [201].

## 8. Summary

EMT was initially described as an integral physiologic mechanism responsible for plasticity of cells during embryogenesis. More recently, it has been recognized as a pathologic process, in particular during cancer metastasis, inflammatory diseases and organ fibrosis. Cumulative evidence now indicates the potential involvement of EMT in the pathogenesis of periodontitis. This linkage is based on several factors which include both processes sharing common risk factors and drivers, including Gram-negative anaerobes, persistent exposure to cytokines, cigarette smoking, diabetes mellitus, hypoxia, and increased local oxidative stress. It is also notable that exposure of epithelial cells to titanium can also drive EMT and this therefore may have implications for the related gum disease of peri-implantitis [202].

While inflammation is aimed at providing a protective mechanism; in susceptible individuals, the exaggerated and chronic immune reaction, in response to the dysbiotic subgingival microbiome, is responsible for the initiation and progression of periodontitis. Current evidence now suggests that periodontal pocket epithelial cells may manifest aspects of EMT due to this prolonged exposure to cytokines which are locally released in response to exposure to Gram-negative bacteria, their components and virulence factors, together with other environmental risk factors. Consequently, the loss of epithelial coherence allows the spread of periodontal pathogens and their virulence factors deeper into the oral tissues, propagating the inflammation, frustrating the healing process and increasing the severity of periodontal tissue destruction. Furthermore, the penetration of the bacteria and cytokines may contribute to the systemic impact and health burden of periodontitis.

Currently, the available level of evidence about EMT-induction during periodontitis in human is scarce which necessitates conducting further pre-clinical and clinical studies to better characterise the role of EMT in the development and progression of periodontitis. Available studies indirectly and separately investigate EMT-associated molecular, cellular, and functional features in periodontitis. Studying these events as one mechanism will better clarify their role in the pathogenesis of periodontitis. Targeted studies could identify novel therapeutic opportunities, including the potential application of repurposed drugs currently used in other indications, now aimed at halting EMT in periodontitis. Such an approach could enable restoration of a homeostatic and cohesive tissue architecture, whilst enabling a controlled and resolving dynamic inflammatory response which would be beneficial for the host.

## Acknowledgment

This study was self-funded. No sponsor was involved in the study design, in the collection, analysis and interpretation of data; in the



writing of the manuscript; and in the decision to submit the manuscript for publication.

## Conflicts of interest

Authors confirm that there are no known conflicts of interest associated with this publication.

## References

- [1] Wolff L, Dahlén G, Aeppli D. Bacteria as risk markers for periodontitis. *J Periodo* 1994;65:498–510.
- [2] Martin JA, Page RC, Loeb CF, Levi Jr. PA. Tooth loss in 776 treated periodontal patients. *J Periodo* 2010;81:244–50.
- [3] Petersen PE, Ogawa H. The global burden of periodontal disease: towards integration with chronic disease prevention and control. *Periodontol* 2000 2012;60:15–39.
- [4] Billings M, Holtfreter B, Papapanou PN, Mitnik GL, Kocher T, Dye BA. Age-dependent distribution of periodontitis in two countries: Findings from NHANES 2009 to 2014 and SHIP-TREND 2008 to 2012. *J Clin Periodo* 2018;45(Suppl 20):S130–48.
- [5] Botelho J, Machado V, Leira Y, Proença L, Chambrone L, Mendes JJ. Economic burden of periodontitis in the United States and Europe: an updated estimation. *J Periodo* 2022;93:373–9.
- [6] Durham J, Fraser HM, McCracken GI, Stone KM, John MT, Preshaw PM. Impact of periodontitis on oral health-related quality of life. *J Dent* 2013;41:370–6.
- [7] Fischer RG, Lira Junior R, Retamal-Valdes B, Figueiredo LC, Malheiros Z, Stewart B, et al. Periodontal disease and its impact on general health in Latin America. Section V: Treatment of periodontitis. *Braz Oral Res* 2020;34:e026.
- [8] Bishop C. Time to take gum disease seriously: the societal and economic impact of periodontitis. *Econ Intell Unit* 2021;2022:1–46.
- [9] Vander Haar EL, So J, Gyamfi-Bannerman C, Han YW. *Fusobacterium nucleatum* and adverse pregnancy outcomes: epidemiological and mechanistic evidence. *Anaerobe* 2018;50:55–9.
- [10] Zardawi F, Gul S, Abdulkareem A, Sha A, Yates J. Association between periodontal disease and atherosclerotic cardiovascular diseases: revisited. *Front Cardiovasc Med* 2020;7:625579.
- [11] Han YW. *Fusobacterium nucleatum*: a commensal-turned pathogen. *Curr Opin Microbiol* 2015;23:141–7.
- [12] Al-Rawi NH, Imran NK, Abdulkareem AA, Abdulsattar AM, Uthman AT. Association between maternal periodontitis, acute-phase reactants and pre-term birth. *Oral Dis* 2021.
- [13] Wu J, Li Q, Fu X. *Fusobacterium nucleatum* contributes to the carcinogenesis of colorectal cancer by inducing inflammation and suppressing host immunity. *Transl Oncol* 2019;12:846–51.
- [14] Lamouille S, Xu J, Derynck R. Molecular mechanisms of epithelial-mesenchymal transition. *Nat Rev Mol Cell Biol* 2014;15:178–96.
- [15] Das V, Bhattacharya S, Chikkaputtaiah C, Hazra S, Pal M. The basics of epithelial-mesenchymal transition (EMT): a study from a structure, dynamics, and functional perspective. *J Cell Physiol* 2019.
- [16] Yang J, Antin P, Berx G, Blanpain C, Brabletz T, Bronner M, et al. Guidelines and definitions for research on epithelial-mesenchymal transition. *Nat Rev Mol Cell Biol* 2020;21:341–52.
- [17] Ismael MK. The prognostic value of some epithelial-mesenchymal transition markers and metastasis-related markers in human transitional cell carcinoma of the bladder. *Baghdad Sci J* 2018;15:244–52.
- [18] Kalluri R, Neilson EG. Epithelial-mesenchymal transition and its implications for fibrosis. *J Clin Invest* 2003;112:1776–84.
- [19] Radisky DC. Epithelial-mesenchymal transition. *J Cell Sci* 2005;118:4325–6.
- [20] Abdulkareem AA, Shelton RM, Landini G, Cooper PR, Milward MR. Potential role of periodontal pathogens in compromising epithelial barrier function by inducing epithelial-mesenchymal transition. *J Periodontol Res* 2018;53:565–74.
- [21] Hofman P, Vouret-Craviari V. Microbes-induced EMT at the crossroad of inflammation and cancer. *Gut Microbes* 2012;3:176–85.
- [22] Dongre A, Weinberg RA. New insights into the mechanisms of epithelial-mesenchymal transition and implications for cancer. *Nat Rev Mol Cell Biol* 2019;20:69–84.
- [23] Vu T, Jin L, Datta PK. Effect of cigarette smoking on epithelial to mesenchymal transition (EMT) in lung cancer. *J Clin Med* 2016;5:44.
- [24] Hou W, Hu S, Li C, Ma H, Wang Q, Meng G, et al. Cigarette smoke induced lung barrier dysfunction, emt, and tissue remodeling: a possible Link between COPD and lung cancer. *Biomed Res Int* 2019;2025636.
- [25] Chen CM, Juan SH, Pai MH, Chou HC. Hyperglycemia induces epithelial-mesenchymal transition in the lungs of experimental diabetes mellitus. *Acta Histochem* 2018;120:525–33.
- [26] Zhang P, Lu B, Zhu R, Yang D, Liu W, Wang Q, et al. Hyperglycemia accelerates inflammation in the gingival epithelium through inflammasomes activation. *J Periodontol Res* 2021;56:667–78.
- [27] Kim DH, Xing T, Yang Z, Duxek R, Lu Q, Chen YH. Epithelial mesenchymal transition in embryonic development, tissue repair and cancer: a comprehensive overview. *J Clin Med* 2017;7.
- [28] Kalluri R, Weinberg RA. The basics of epithelial-mesenchymal transition. *J Clin Invest* 2009;119:1420–8.
- [29] Mittal V. Epithelial mesenchymal transition in tumor metastasis. *Annu Rev Pathol* 2018;13:395–412.
- [30] Agnoletto C, Caruso C, Garofalo C. Heterogeneous circulating tumor cells in sarcoma: implication for clinical practice. *Cancers* 2021;13.
- [31] Blick T, Widodo E, Hugo H, Waltham M, Lenburg ME, Neve RM, et al. Epithelial mesenchymal transition traits in human breast cancer cell lines. *Clin Exp Metastas* 2008;25:629–42.
- [32] Trimboli AJ, Fukino K, de Bruin A, Wei G, Shen L, Tanner SM, et al. Direct evidence for epithelial-mesenchymal transitions in breast cancer. *Cancer Res* 2008;68:937–45.
- [33] Hay ED, editor Organization and fine structure of epithelium and mesenchyme in the developing chick embryo. Epithelial-Mesenchymal Interactions; 18th Hahemann Symposium, 1968; 1968: Williams & Wilkins.
- [34] Thiery JP, Sleeman JP. Complex networks orchestrate epithelial-mesenchymal transitions. *Nat Rev Mol Cell Biol* 2006;7:131–42.
- [35] Newgreen DF, Ritterman M, Peters EA. Morphology and behaviour of neural crest cells of chick embryo in vitro. *Cell Tissue Res* 1979;203:115–40.
- [36] Thiery JP, Duband JL, Rutishauser U, Edelman GM. Cell adhesion molecules in early chicken embryogenesis. *Proc Natl Acad Sci USA* 1982;79:6737–41.
- [37] Trelstad RL, Hayashi A, Hayashi K, Donahoe PK. The epithelial-mesenchymal interface of the male rat Mullerian duct: loss of basement membrane integrity and ductal regression. *Dev Biol* 1982;92:27–40.
- [38] Pöpperl H, Schmidt C, Wilson V, Hume CR, Dodd J, Krumlauf R, et al. Misexpression of Cwnt8C in the mouse induces an ectopic embryonic axis and causes a truncation of the anterior neuroectoderm. *Development* 1997;124:2997–3005.
- [39] Skromme I, Stern CD. Interactions between Wnt and Vg1 signalling pathways initiate primitive streak formation in the chick embryo. *Development* 2001;128:2915–27.
- [40] Liu P, Wakamiya M, Shea MJ, Albrecht U, Behringer RR, Bradley A. Requirement for Wnt3 in vertebrate axis formation. *Nat Genet* 1999;22:361–5.
- [41] Skromme I, Stern CD. A hierarchy of gene expression accompanying induction of the primitive streak by Vg1 in the chick embryo. *Mech Dev* 2002;114:115–8.
- [42] Chea HK, Wright CV, Swalla BJ. Nodal signaling and the evolution of deuterostome gastrulation. *Dev Dyn* 2005;234:269–78.
- [43] Wynn TA. Cellular and molecular mechanisms of fibrosis. *J Pathol* 2008;214:199–210.
- [44] López-Novoa JM, Nieto MA. Inflammation and EMT: an alliance towards organ fibrosis and cancer progression. *EMBO Mol Med* 2009;1:303–14.
- [45] Sume SS, Kantarci A, Lee A, Hasturk H, Trackman PC. Epithelial to mesenchymal transition in gingival overgrowth. *Am J Pathol* 2010;177:208–18.
- [46] Zhou B, von Gise A, Ma Q, Hu YW, Pu WT. Genetic fate mapping demonstrates contribution of epicardium-derived cells to the annulus fibrosis of the mammalian heart. *Dev Biol* 2010;338:251–61.
- [47] Jenkins RG, Moore BB, Chambers RC, Eickelberg O, Königshoff M, Kolb M, et al. An official American thoracic society workshop report: use of animal models for the preclinical assessment of potential therapies for pulmonary fibrosis. *Am J Respir Cell Mol Biol* 2017;56:667–79.
- [48] Savagner P, Arnoux V. Epithelial-mesenchymal transition and cutaneous wound healing. *Bull Acad Natl Med* 2009;193:1981–91.
- [49] Stone RC, Pastar I, Ojeh N, Chen V, Liu S, Garzon KI, et al. Epithelial-mesenchymal transition in tissue repair and fibrosis. *Cell Tissue Res* 2016;365:495–506.
- [50] Savagner P, Kusewitt DF, Carver EA, Magnino F, Choi C, Gridley T, et al. Developmental transcription factor slug is required for effective re-epithelialization by adult keratinocytes. *J Cell Physiol* 2005;202:858–66.
- [51] Yang J, Weinberg RA. Epithelial-mesenchymal transition: at the crossroads of development and tumor metastasis. *Dev Cell* 2008;14:818–29.
- [52] Shibue T, Weinberg RA. EMT, CSCs, and drug resistance: the mechanistic link and clinical implications. *Nat Rev Clin Oncol* 2017;14:611–29.
- [53] Mani SA, Guo W, Liao MJ, Eaton EN, Ayyanan A, Zhou AY, et al. The epithelial-mesenchymal transition generates cells with properties of stem cells. *Cell* 2008;133:704–15.
- [54] Morel A-P, Lièvre M, Thomas C, Hinkal G, Ansieau S, Puisieux A. Generation of breast cancer stem cells through epithelial-mesenchymal transition. *PLoS One* 2008;3: e2888-e2888.
- [55] Moody SE, Perez D, Pan TC, Sarkisian CJ, Portocarrero CP, Sterner CJ, et al. The transcriptional repressor Snail promotes mammary tumor recurrence. *Cancer Cell* 2005;8:197–209.
- [56] Baumgart E, Cohen MS, Silva Neto B, Jacobs MA, Wotkowicz C, Rieger-Christ KM, et al. Identification and prognostic significance of an epithelial-mesenchymal transition expression profile in human bladder tumors. *Clin Cancer Res* 2007;13:1685–94.
- [57] Rhim AD, Mirek ET, Aiello NM, Maitra A, Bailey JM, McAllister F, et al. EMT and dissemination precede pancreatic tumor formation. *Cell* 2012;148:349–61.
- [58] Ye X, Tam WL, Shibue T, Kaygusuz Y, Reinhardt F, Ng Eaton E, et al. Distinct EMT programs control normal mammary stem cells and tumour-initiating cells. *Nature* 2015;525:256–60.
- [59] Zeisberg M, Neilson EG. Biomarkers for epithelial-mesenchymal transitions. *J Clin Invest* 2009;119:1429–37.
- [60] Scanlon CS, Van Tubergen EA, Inglehart RC, D'Silva NJ. Biomarkers of epithelial-mesenchymal transition in squamous cell carcinoma. *J Dent Res* 2012;92:114–21.
- [61] Alimperti S, Andreadis ST. CDH2 and CDH11 act as regulators of stem cell fate decisions. *Stem Cell Res* 2015;14:270–82.
- [62] Gumbiner BM. Regulation of cadherin-mediated adhesion in morphogenesis. *Nat Rev Mol Cell Biol* 2005;6:622–34.

- [63] Paznekas WA, Okajima K, Schertzer M, Wood S, Jabs EW. Genomic organization, expression, and chromosome location of the human SNAIL gene (SNAIL1) and a related processed pseudogene (SNAIL1P). *Genomics* 1999;62:42–9.
- [64] Stemmler MP, Eccles RL, Brabletz S, Brabletz T. Non-redundant functions of EMT transcription factors. *Nat Cell Biol* 2019;21:102–12.
- [65] Barrallo-Gimeno A, Nieto MA. The Snail genes as inducers of cell movement and survival: implications in development and cancer. *Development* 2005;132:3151–61.
- [66] Batlle E, Sancho E, Francí C, Domínguez D, Monfar M, Baulida J, et al. The transcription factor snail is a repressor of E-cadherin gene expression in epithelial tumour cells. *Nat Cell Biol* 2000;2:84–9.
- [67] Dong C, Wu Y, Wang Y, Wang C, Kang T, Rychahou PG, et al. Interaction with Suv39H1 is critical for Snail-mediated E-cadherin repression in breast cancer. *Oncogene* 2013;32:1351–62.
- [68] McCrea PD, Turck CW, Gumbiner B. A homolog of the armadillo protein in *Drosophila* (plakoglobin) associated with E-cadherin. *Science* 1991;254:1359–61.
- [69] Peifer M, Rauskolb C, Williams M, Riggleman B, Wieschaus E. The segment polarity gene armadillo interacts with the wingless signaling pathway in both embryonic and adult pattern formation. *Development* 1991;111:1029–43.
- [70] Noordermeer J, Klingensmith J, Perrimon N, Nusse R. Dishevelled and armadillo act in the wingless signalling pathway in *Drosophila*. *Nature* 1994;367:80–3.
- [71] Nelson WJ. Regulation of cell-cell adhesion by the cadherin-catenin complex. *Biochem Soc Trans* 2008;36:149–55.
- [72] Cabeen MT, Jacobs-Wagner C. The bacterial cytoskeleton. *Annu Rev Genet* 2010;44:365–92.
- [73] Windoffer R, Beil M, Magin TM, Leube RE. Cytoskeleton in motion: the dynamics of keratin intermediate filaments in epithelia. *J Cell Biol* 2011;194:669–78.
- [74] Bhattacharya R, Gonzalez AM, Debiase PJ, Trejo HE, Goldman RD, Flitney FW, et al. Recruitment of vimentin to the cell surface by beta3 integrin and plectin mediates adhesion strength. *J Cell Sci* 2009;122:1390–400.
- [75] Kim J, Yang C, Kim EJ, Jang J, Kim SJ, Kang SM, et al. Vimentin filaments regulate integrin-ligand interactions by binding to the cytoplasmic tail of integrin  $\beta 3$ . *J Cell Sci* 2016;129:2030–42.
- [76] Goldman RD, Khuon S, Chou YH, Opal P, Steinert PM. The function of intermediate filaments in cell shape and cytoskeletal integrity. *J Cell Biol* 1996;134:971–83.
- [77] Duarte S, Viedma-Poyatos Á, Navarro-Carrasco E, Martínez AE, Pajares MA, Pérez-Sala D. Vimentin filaments interact with the actin cortex in mitosis allowing normal cell division. *Nat Commun* 2019;10:4200.
- [78] Peinado H, Ballestas E, Esteller M, Cano A. Snail mediates E-cadherin repression by the recruitment of the Sin3A/histone deacetylase 1 (HDAC1)/HDAC2 complex. *Mol Cell Biol* 2004;24:306–19.
- [79] Ikenouchi J, Matsuda M, Furuse M, Tsukita S. Regulation of tight junctions during the epithelium-mesenchyme transition: direct repression of the gene expression of claudins/occludin by Snail. *J Cell Sci* 2003;116:1959–67.
- [80] Polette M, Mestdagt M, Bindels S, Nawrocki-Raby B, Hunziker W, Foidart JM, et al. Beta-catenin and ZO-1: shuttle molecules involved in tumor invasion-associated epithelial-mesenchymal transition processes. *Cells Tissues Organs* 2007;185:61–5.
- [81] Savagner P, Yamada KM, Thiery JP. The zinc-finger protein slug causes desmosome dissociation, an initial and necessary step for growth factor-induced epithelial-mesenchymal transition. *J Cell Biol* 1997;137:1403–19.
- [82] Jiang S-B, He X-J, Xia Y-J, Hu W-J, Luo J-G, Zhang J, et al. MicroRNA-145-5p inhibits gastric cancer invasiveness through targeting N-cadherin and ZEB2 to suppress epithelial-mesenchymal transition. *Oncotargets Ther* 2016;9:2305–15.
- [83] Medici D, Hay ED, Olsen BR. Snail and Slug promote epithelial-mesenchymal transition through beta-catenin-T-cell factor-4-dependent expression of transforming growth factor-beta3. *Mol Biol Cell* 2008;19:4875–87.
- [84] Yan D, Avtanski D, Saxena NK, Sharma D. Leptin-induced epithelial-mesenchymal transition in breast cancer cells requires  $\beta$ -catenin activation via Akt/GSK3- and MTA1/Wnt1 protein-dependent pathways. *J Biol Chem* 2012;287:8598–612.
- [85] Savagner P. The epithelial-mesenchymal transition (EMT) phenomenon. *Ann Oncol* 2010;21(Suppl 7):vii89–92.
- [86] Serrano MJ, Ortega FG, Alvarez-Cubero MJ, Nadal R, Sanchez-Rovira P, Salido M, et al. EMT and EGFR in CTCs cytokeratin negative non-metastatic breast cancer. *Oncotarget* 2014;5:7486–97.
- [87] Ding L, Zhang Z, Shang D, Cheng J, Yuan H, Wu Y, et al.  $\alpha$ -Smooth muscle actin-positive myofibroblasts, in association with epithelial-mesenchymal transition and lymphogenesis, is a critical prognostic parameter in patients with oral tongue squamous cell carcinoma. *J Oral Pathol Med* 2014;43:335–43.
- [88] Mendez MG, Kojima S, Goldman RD. Vimentin induces changes in cell shape, motility, and adhesion during the epithelial to mesenchymal transition. *Faseb J* 2010;24:1838–51.
- [89] Okada H, Danoff TM, Kalluri R, Neilson EG. Early role of Fsp1 in epithelial-mesenchymal transformation. *Am J Physiol* 1997;273:F563–74.
- [90] Eckert MA, Lwin TM, Chang AT, Kim J, Danis E, Ohno-Machado L, et al. Twist1-induced invadopodia formation promotes tumor metastasis. *Cancer Cell* 2011;19:372–86.
- [91] Kim K, Lu Z, Hay ED. Direct evidence for a role of beta-catenin/LEF-1 signaling pathway in induction of EMT. *Cell Biol Int* 2002;26:463–76.
- [92] Xu J, Lamouille S, Derynck R. TGF- $\beta$ -induced epithelial to mesenchymal transition. *Cell Res* 2009;19:156–72.
- [93] Huber MA, Azoitei N, Baumann B, Grünert S, Sommer A, Pehamberger H, et al. NF-kappaB is essential for epithelial-mesenchymal transition and metastasis in a model of breast cancer progression. *J Clin Invest* 2004;114:569–81.
- [94] He P, Jin X. SOX10 induces epithelial-mesenchymal transition and contributes to nasopharyngeal carcinoma progression. *Biochem Cell Biol* 2018;96:326–31.
- [95] Dravis C, Spike BT, Harrell JC, Johns C, Trejo CL, Southard-Smith EM, et al. Sox10 regulates stem/progenitor and mesenchymal cell states in mammary epithelial cells. *Cell Rep* 2015;12:2035–48.
- [96] Børretzen A, Gravdal K, Haukaas SA, Beisland C, Akslen LA, Halvorsen OJ. FOXC2 expression and epithelial-mesenchymal phenotypes are associated with castration resistance, metastasis and survival in prostate cancer. *J Pathol Clin Res* 2019;5:272–86.
- [97] Hollier BG, Tinnirello AA, Werden SJ, Evans KW, Taube JH, Sarkar TR, et al. FOXC2 expression links epithelial-mesenchymal transition and stem cell properties in breast cancer. *Cancer Res* 2013;73:1981–92.
- [98] Shintani Y, Maeda M, Chaika N, Johnson KR, Wheelock MJ. Collagen I promotes epithelial-to-mesenchymal transition in lung cancer cells via transforming growth factor-beta signaling. *Am J Respir Cell Mol Biol* 2008;38:95–104.
- [99] Song W, Jackson K, McGuire PG. Degradation of type IV collagen by matrix metalloproteinases is an important step in the epithelial-mesenchymal transformation of the endocardial cushions. *Dev Biol* 2000;227:606–17.
- [100] Kantarci A, Nseir Z, Kim YS, Sume SS, Trackman PC. Loss of basement membrane integrity in human gingival overgrowth. *J Dent Res* 2011;90:887–93.
- [101] Li Y, Yang J, Dai C, Wu C, Liu Y. Role for integrin-linked kinase in mediating tubular epithelial to mesenchymal transition and renal interstitial fibrogenesis. *J Clin Invest* 2003;112:503–16.
- [102] Maschler S, Wirl G, Spring H, Bredow DV, Sordat I, Beug H, et al. Tumor cell invasiveness correlates with changes in integrin expression and localization. *Oncogene* 2005;24:2032–41.
- [103] Cheng S, Lovett DH. Gelatinase A (MMP-2) is necessary and sufficient for renal tubular cell epithelial-mesenchymal transformation. *Am J Clin Pathol* 2003;102:1937–49.
- [104] Bierie B, Moses HL. TGF-beta and cancer. *Cytokine Growth Factor Rev* 2006;17:29–40.
- [105] Xu J, Lamouille S, Derynck R. TGF-beta-induced epithelial to mesenchymal transition. *Cell Res* 2009;19:156–72.
- [106] Derynck R, Muthusamy BP, Saetern KY. Signaling pathway cooperation in TGF- $\beta$ -induced epithelial-mesenchymal transition. *Curr Opin Cell Biol* 2014;31:56–66.
- [107] Shi Y, Massagué J. Mechanisms of TGF-beta signaling from cell membrane to the nucleus. *Cell* 2003;113:685–700.
- [108] Massagué J. TGF-beta in. *Cancer Cell* 2008;134:215–30.
- [109] Dhasarathy A, Phadke D, Mav D, Shah RR, Wade PA. The transcription factors Snail and Slug activate the transforming growth factor-beta signaling pathway in breast cancer. *PLoS One* 2011;6:e26514.
- [110] Grande MT, Sánchez-Laorden B, López-Blau C, De Frutos CA, Boutet A, Arévalo M, et al. Snail1-induced partial epithelial-to-mesenchymal transition drives renal fibrosis in mice and can be targeted to reverse established disease. *Nat Med* 2015;21:989–97.
- [111] Thiery JP, Huang R. Linking epithelial-mesenchymal transition to the well-known polarity protein Par6. *Dev Cell* 2005;8:456–8.
- [112] Peinado H, Olmeda D, Cano A. Snail, Zeb and bHLH factors in tumour progression: an alliance against the epithelial phenotype? *Nat Rev Cancer* 2007;7:415–28.
- [113] (St) Johnston D, Ahringer J. Cell polarity in eggs and epithelia: parallels and diversity. *Cell* 2010;141:757–74.
- [114] Navarro C, Nola S, Audebert S, Santoni MJ, Arsanto JP, Ginestier C, et al. Junctional recruitment of mammalian Scribble relies on E-cadherin engagement. *Oncogene* 2005;24:4330–9.
- [115] Qin Y, Capaldo C, Gumbiner BM, Macara IG. The mammalian Scribble polarity protein regulates epithelial cell adhesion and migration through E-cadherin. *J Cell Biol* 2005;171:1061–71.
- [116] Hazan RB, Qiao R, Keren R, Badano I, Suyama K. Cadherin switch in tumor progression. *Ann N Y Acad Sci* 2004;1014:155–63.
- [117] Dongre A, Weinberg RA. New insights into the mechanisms of epithelial-mesenchymal transition and implications for cancer. *Nat Rev Mol Cell Biol* 2019;20:69–84.
- [118] Huang RY, Guilford P, Thiery JP. Early events in cell adhesion and polarity during epithelial-mesenchymal transition. *J Cell Sci* 2012;125:4417–22.
- [119] Yilmaz M, Christofori G. EMT, the cytoskeleton, and cancer cell invasion. *Cancer Metastasis Rev* 2009;28:15–33.
- [120] Niehrs C. The complex world of WNT receptor signalling. *Nat Rev Mol Cell Biol* 2012;13:767–79.
- [121] Feiteng C, Lei C, Deng L, Chaoliang X, Zijie X, Yi S, et al. Relaxin inhibits renal fibrosis and the epithelial-to-mesenchymal transition via the Wnt/ $\beta$ -catenin signaling pathway. *Ren Fail* 2022;44: 513–24.
- [122] Kourtidis A, Ngok SP, Anastasiadis PZ. p120 catenin: an essential regulator of cadherin stability, adhesion-induced signaling, and cancer progression. *Prog Mol Biol Transl Sci* 2013;116:409–32.
- [123] Bax NAM, Pijnappels DA, van Oorschot AAM, Winter EM, de Vries AAF, van Tuyn J, et al. Epithelial-to-mesenchymal transformation alters electrical conductivity of human epicardial cells. *J Cell Mol Med* 2011;15:2675–83.
- [124] De Craene B, Berx G. Regulatory networks defining EMT during cancer initiation and progression. *Nat Rev Cancer* 2013;13:97–110.
- [125] Yilmaz M, Christofori G. Mechanisms of motility in metastasizing cells. *Mol Cancer Res* 2010;8:629–42.

- [126] Haynes J, Srivastava J, Madson N, Wittmann T, Barber DL. Dynamic actin remodeling during epithelial-mesenchymal transition depends on increased moesin expression. *Mol Biol Cell* 2011;22:4750–64.
- [127] Nelson WJ. Remodeling epithelial cell organization: transitions between front-rear and apical-basal polarity. *Cold Spring Harb Perspect Biol* 2009;1:a000513.
- [128] Godde NJ, Galea RC, Elsum IA, Humbert PO. Cell polarity in motion: redefining mammary tissue organization through EMT and cell polarity transitions. *J Mammary Gland Biol Neoplasia* 2010;15:149–68.
- [129] Schoumacher M, Goldman RD, Louvard D, Vignjevic DM. Actin, microtubules, and vimentin intermediate filaments cooperate for elongation of invadopodia. *J Cell Biol* 2010;189:541–56.
- [130] Yoo YA, Kang MH, Lee HJ, Kim BH, Park JK, Kim HK, et al. Sonic hedgehog pathway promotes metastasis and lymphangiogenesis via activation of Akt, EMT, and MMP-9 pathway in gastric cancer. *Cancer Res* 2011;71:7061–70.
- [131] Kim Y, Kugler MC, Wei Y, Kim KK, Li X, Brumwell AN, et al. Integrin  $\alpha 3$ - $\beta 1$ -dependent beta-catenin phosphorylation links epithelial Smad signaling to cell contacts. *J Cell Biol* 2009;184:309–22.
- [132] Blaser MJ. Who are we? Indigenous microbes and the ecology of human diseases. *EMBO Rep* 2006;7:956–60.
- [133] Segal ED, Cha J, Lo J, Falkow S, Tompkins LS. Altered states: involvement of phosphorylated CagA in the induction of host cellular growth changes by *Helicobacter pylori*. *Proc Natl Acad Sci USA* 1999;96:14559–64.
- [134] Odenbreit S, Püls J, Sedlmaier B, Gerland E, Fischer W, Haas R. Translocation of *Helicobacter pylori* CagA into gastric epithelial cells by type IV secretion. *Science* 2000;287:1497–500.
- [135] Bakir WA, Hussein SM, Mahmood NA. Determination of enzymatic antioxidant in Iraqi patients with chronic gastritis. *Iraqi J Pharm Sci* 2008;17:26–31.
- [136] Wroblewski LE, Peek Jr RM, Wilson KT. *Helicobacter pylori* and gastric cancer: factors that modulate disease risk. *Clin Microbiol Rev* 2010;23:713–39.
- [137] Baj J, Korona-Glowniak I, Forma A, Maani A, Sitarz E, Rahnema-Hezavah M, et al. Mechanisms of the epithelial-mesenchymal transition and tumor micro-environment in *Helicobacter pylori*-Induced Gastric. *Cancer Cells* 2020;9:1055.
- [138] Yin Y, Li F, Li S, Cai J, Shi J, Jiang Y. TLR4 influences hepatitis B virus related hepatocellular carcinoma by regulating the Wnt/ $\beta$ -catenin pathway. *Cell Physiol Biochem* 2017;42:469–79.
- [139] Clarke TB, Francella N, Huegel A, Weiser JN. Invasive bacterial pathogens exploit TLR-mediated downregulation of tight junction components to facilitate translocation across the epithelium. *Cell Host Microbe* 2011;9:404–14.
- [140] Beisswenger C, Lysenko ES, Weiser JN. Early bacterial colonization induces toll-like receptor-dependent transforming growth factor beta signaling in the epithelium. *Infect Immun* 2009;77:2212–20.
- [141] Kumar PS, Griffen AL, Moeschberger ML, Leys EJ. Identification of candidate periodontal pathogens and beneficial species by quantitative 16S clonal analysis. *J Clin Microbiol* 2005;43:3944–55.
- [142] Lovegrove JM. Dental plaque revisited: bacteria associated with periodontal disease. *J N Z Soc Periodo* 2004;7:21.
- [143] Scott DA, Krauss J. Neutrophils in periodontal inflammation. *Front Oral Biol* 2012;15:56–83.
- [144] Tribble GD, Lamont RJ. Bacterial invasion of epithelial cells and spreading in periodontal tissue. *Periodontol* 2000 2010;52:68–83.
- [145] Kornman KS, Page RC, Tonetti MS. The host response to the microbial challenge in periodontitis: assembling the players. *Periodontol* 2000 1997;14:33–53.
- [146] Hannas AR, Pereira JC, Granjeiro JM, Tjäderhane L. The role of matrix metalloproteinases in the oral environment. *Acta Odontol Scand* 2007;65:1–13.
- [147] Boyce BF, Xing L. The RANKL/RANK/OPG pathway. *Curr Osteoporos Rep* 2007;5:98–104.
- [148] Belibasakis GN, Bostanci N. The RANKL-OPG system in clinical periodontology. *J Clin Periodo* 2012;39:239–48.
- [149] Tsubaki M, Komai M, Fujimoto S, Itoh T, Imano M, Sakamoto K, et al. Activation of NF- $\kappa$ B by the RANKL/RANK system up-regulates snail and twist expressions and induces epithelial-to-mesenchymal transition in mammary tumor cell lines. *J Exp Clin Cancer Res* 2013;32:62.
- [150] Palafox M, Ferrer I, Pellegrini P, Vila S, Hernandez-Ortega S, Urruticoechea A, et al. RANK induces epithelial-mesenchymal transition and stemness in human mammary epithelial cells and promotes tumorigenesis and metastasis. *Cancer Res* 2012;72:2879–88.
- [151] Chapple ILC, Gilbert AD, Wilson NHF. *Understanding Periodontal Diseases: Assessment and Diagnostic Procedures in Practice*. London, England: Quintessence Publishing Co; 2002.
- [152] Benakanakere M, Kinane DF. Innate cellular responses to the periodontal biofilm. *Front Oral Biol* 2011;15:41–55.
- [153] Graves D. Cytokines that promote periodontal tissue destruction. *J Periodo* 2008;79:1585–91.
- [154] Vernal R, Dutzan N, Hernández M, Chandía S, Puente J, León R, et al. High expression levels of receptor activator of nuclear factor- $\kappa$ B ligand associated with human chronic periodontitis are mainly secreted by CD4<sup>+</sup> T lymphocytes. *J Periodo* 2006;77:1772–80.
- [155] Ahn SH, Chun S, Park C, Lee JH, Lee SW, Lee TH. Transcriptome profiling analysis of senescent gingival fibroblasts in response to *Fusobacterium nucleatum* infection. *PLoS One* 2017;12:e0188755.
- [156] Palm E, Khalaf H, Bengtsson T. *Porphyromonas gingivalis* downregulates the immune response of fibroblasts. *BMC Microbiol* 2013;13:155.
- [157] Page RC, Kornman KS. The pathogenesis of human periodontitis: an introduction. *Periodontol* 2000 1997;14:9–11.
- [158] Cekici A, Kantarci A, Hasturk H, Van, Dyke TE. Inflammatory and immune pathways in the pathogenesis of periodontal disease. *Periodontol* 2000 2014;64:57–80.
- [159] Alshargabi R, Sano T, Yamashita A, Takano A, Sanada T, Iwashita M, et al. SPOCK1 is a novel inducer of epithelial to mesenchymal transition in drug-induced gingival overgrowth. *Sci Rep* 2020;10:9785.
- [160] Hunter N, Nicholls B, Srivastava M, Chapple CC, Zoellner HF, Gibbins JR. Reactive pocket epithelium in untreated chronic periodontal disease: possible derivation from developmental remnants of the enamel organ and root sheath. *J Oral Pathol Med* 2001;30:178–86.
- [161] Akimoto T, Fujiwara N, Kagiya T, Otsu K, Ishizeki K, Harada H. Establishment of Hertwig's epithelial root sheath cell line from cells involved in epithelial-mesenchymal transition. *Biochem Biophys Res Commun* 2011;404:308–12.
- [162] Itaya S, Oka K, Ogata K, Tamura S, Kira-Tatsuoka M, Fujiwara N, et al. Hertwig's epithelial root sheath cells contribute to formation of periodontal ligament through epithelial-mesenchymal transition by TGF- $\beta$ . *Biomed Res* 2017;38:61–9.
- [163] Xiong J, Mrozik K, Gronthos S, Bartold PM. Epithelial cell rests of Malassez contain unique stem cell populations capable of undergoing epithelial-mesenchymal transition. *Stem Cells Dev* 2012;21:2012–25.
- [164] Ronay V, Belibasakis GN, Schmidlin PR, Bostanci N. Infected periodontal granulation tissue contains cells expressing embryonic stem cell markers. A pilot study. *Schweiz Mon Zahnmed* 2013;123:12–6.
- [165] Dabija-Wolter G, Cimpan MR, Costea DE, Johannessen AC, Sørnes S, Neppelberg E, et al. *Fusobacterium nucleatum* enters normal human oral fibroblasts in vitro. *J Periodo* 2009;80:1174–83.
- [166] Amornchat C, Rassameemasmaung S, Sripairojthikoon W, Swasdison S. Invasion of *porphyromonas gingivalis* into human gingival fibroblasts in vitro. *J Int Acad Periodo* 2003;5:98–105.
- [167] Costerton JW, Lewandowski Z, DeBeer D, Caldwell D, Korber D, James G. Biofilms, the customized microniche. *J Bacteriol* 1994;176:2137–42.
- [168] Sume S, Kantarci A, Lee A, Hasturk H, Trackman P. Epithelial to MESENCHYMAL TRANSITION IN GINGIVAL OVERgrowth. *Am J Clin Pathol* 2010;177:208–18.
- [169] Matuszczak E, Cwalina I, Tylicka M, Wawrzyn K, Nowosielska M, Sankiewicz A, et al. Levels of selected matrix metalloproteinases-MMP-1, MMP-2 and fibronectin in the saliva of patients planned for endodontic treatment or surgical extraction. *J Clin Med* 2020;9.
- [170] Bi J, Koivisto L, Pang A, Li M, Jiang G, Aurora S, et al. Suppression of  $\alpha v \beta 6$  Integrin Expression by Polymicrobial Oral Biofilms in Gingival Epithelial Cells. *Sci Rep* 2017;7:4411.
- [171] Chatzopoulos GS, Koidou VP, Wolff LF. Expression of Wnt signaling agonists and antagonists in periodontitis and healthy subjects, before and after non-surgical periodontal treatment: a systematic review. *J Periodontol Res* 2022;57:698–710.
- [172] Liu X, Zhang Z, Pan S, Shang S, Li C. Interaction between the Wnt/ $\beta$ -catenin signaling pathway and the EMMPRIN/MMP-2, 9 route in periodontitis. *J Periodontol Res* 2018;53:842–52.
- [173] Hajishengallis G, Darveau RP, Curtis MA. The keystone-pathogen hypothesis. *Nat Rev Microbiol* 2012;10:717–25.
- [174] Shouda T, Yoshida T, Hanada T, Wakioka T, Oishi M, Miyoshi K, et al. Induction of the cytokine signal regulator SOCS3/CIS3 as a therapeutic strategy for treating inflammatory arthritis. *J Clin Invest* 2001;108:1781–8.
- [175] Ahmad SF, Ansari MA, Zoheir KM, Bakheet SA, Korashy HM, Nadeem A, et al. Regulation of TNF- $\alpha$  and NF- $\kappa$ B activation through the JAK/STAT signaling pathway downstream of histamine 4 receptor in a rat model of LPS-induced joint inflammation. *Immunobiology* 2015;220:889–98.
- [176] Jiang D, Li D, Cao L, Wang L, Zhu S, Xu T, et al. Positive feedback regulation of proliferation in vascular smooth muscle cells stimulated by lipopolysaccharide is mediated through the TLR 4/Rac1/Akt pathway. *PLoS One* 2014;9:e92398.
- [177] Lieberthal W, Levine JS. The role of the mammalian target of rapamycin (mTOR) in renal disease. *J Am Soc Nephrol* 2009;20:2493.
- [178] Hoare A, Soto C, Rojas-Celis V, Bravo D. Chronic inflammation as a link between periodontitis and carcinogenesis. *Mediat Inflamm* 2019;2019:1029857.
- [179] Lee J, Roberts JS, Atanasova KR, Chowdhury N, Han K, Yilmaz Ö. Human primary epithelial cells acquire an epithelial-mesenchymal-transition phenotype during long-term infection by the oral opportunistic pathogen, *porphyromonas gingivalis*. *Front Cell Infect Microbiol* 2017;7:493.
- [180] Yost S, Stashenko P, Choi Y, Kukuruzinska M, Genco CA, Salama A, et al. Increased virulence of the oral microbiome in oral squamous cell carcinoma revealed by metatranscriptome analyses. *Int J Oral Sci* 2018;10:32.
- [181] Sztukowska MN, Ojo A, Ahmed S, Carenbauer AL, Wang Q, Shumway B, et al. *Porphyromonas gingivalis* initiates a mesenchymal-like transition through ZEB1 in gingival epithelial cells. *Cell Microbiol* 2016;18:844–58.
- [182] Li Y, Li B, Liu Y, Wang H, He M, Liu Y, et al. *Porphyromonas gingivalis* lipopolysaccharide affects oral epithelial connections via pyroptosis. *J Dent Sci* 2021;16:1255–63.
- [183] Abe-Yutori M, Chikazawa T, Shibasaki K, Murakami S. Decreased expression of E-cadherin by *Porphyromonas gingivalis*-lipopolysaccharide attenuates epithelial barrier function. *J Periodontol Res* 2017;52:42–50.
- [184] Suh JS, Kim S, Boström KI, Wang C-Y, Kim RH, Park N-H. Periodontitis-induced systemic inflammation exacerbates atherosclerosis partly via endothelial-mesenchymal transition in mice. *Int J Oral Sci* 2019;11:21.
- [185] Figuero E, Sánchez-Beltrán M, Cuesta-Frechoso S, Tejerina JM, del Castro JA, Gutiérrez JM, et al. Detection of periodontal bacteria in atheromatous plaque by nested polymerase chain reaction. *J Periodo* 2011;82:1469–77.

- [186] Harrandah AM, Chukkapalli SS, Bhattacharyya I, Progulsk-Fox A, Chan EKL. Fusobacteria modulate oral carcinogenesis and promote cancer progression. *J Oral Microbiol* 2020;13:1849493.
- [187] Yu MR, Kim HJ, Park HR. Fusobacterium nucleatum accelerates the progression of colitis-associated colorectal cancer by promoting EMT. *Cancers* 2020;12.
- [188] Shao W, Fujiwara N, Mouri Y, Kisoda S, Yoshida K, Yoshida K, et al. Conversion from epithelial to partial-EMT phenotype by Fusobacterium nucleatum infection promotes invasion of oral cancer cells. *Sci Rep* 2021;11:14943.
- [189] Abdulkareem AA, Shelton RM, Landini G, Cooper PR, Milward MR. Periodontal pathogens promote epithelial-mesenchymal transition in oral squamous carcinoma cells in vitro. *Cell Adh Migr* 2018;12:127–37.
- [190] Lamont RJ, Fitzsimonds ZR, Wang H, Gao S. Role of Porphyromonas gingivalis in oral and orodigestive squamous cell carcinoma. *Periodontol* 2022;2000.
- [191] Harrandah AM, Chukkapalli SS, Bhattacharyya I, Progulsk-Fox A, Chan EKL. Fusobacteria modulate oral carcinogenesis and promote cancer progression. *J Oral Microbiol* 2020;13:1849493.
- [192] Zhang S, Li C, Liu J, Geng F, Shi X, Li Q, et al. Fusobacterium nucleatum promotes epithelial-mesenchymal transition through regulation of the lncRNA MIR4435-2HG/miR-296-5p/Akt2/SNAI1 signaling pathway. *FEBS J* 2020;287:4032–47.
- [193] Lafuente Ibáñez de Mendoza I, Maritxalar Mendia X, García de la Fuente AM, Quindós Andrés G, Aguirre Urizar JM. Role of Porphyromonas gingivalis in oral squamous cell carcinoma development: a systematic review. *J Periodontal Res* 2020;55:13–22.
- [194] Komlós G, Csurgay K, Horváth F, Pelyhe L, Németh Z. Periodontitis as a risk for oral cancer: a case-control study. *BMC Oral Health* 2021;21:640.
- [195] Palena C, Hamilton DH, Fernando RI. Influence of IL-8 on the epithelial-mesenchymal transition and the tumor microenvironment. *Future Oncol* 2012;8:713–22.
- [196] Kim BN, Ahn DH, Kang N, Yeo CD, Kim YK, Lee KY, et al. TGF- $\beta$  induced EMT and stemness characteristics are associated with epigenetic regulation in lung cancer. *Sci Rep* 2020;10:10597.
- [197] Mize TW, Sundararaj KP, Leite RS, Huang Y. Increased and correlated expression of connective tissue growth factor and transforming growth factor beta 1 in surgically removed periodontal tissues with chronic periodontitis. *J Periodontal Res* 2015;50:315–9.
- [198] Ye P, Chapple CC, Kumar RK, Hunter N. Expression patterns of E-cadherin, involucrin, and connexin gap junction proteins in the lining epithelia of inflamed gingiva. *J Pathol* 2000;192:58–66.
- [199] Wadie KW, Bashir MH, Abbass MMS. Epithelial-mesenchymal transition in gingival tissues from chronic periodontitis patients: a case-control study. *Dent Med Probl* 2021;58:311–9.
- [200] Nagarakanti S, Ramya S, Babu P, Arun KV, Sudarsan S. Differential expression of E-cadherin and cytokeratin 19 and net proliferative rate of gingival keratinocytes in oral epithelium in periodontal health and disease. *J Periodo* 2007;78:2197–202.
- [201] Wara-aswapati N, Surarit R, Chayasadam A, Boch JA, Pitiphat W. RANKL up-regulation associated with periodontitis and Porphyromonas gingivalis. *J Periodo* 2007;78:1062–9.
- [202] Setyawati MI, Sevensan C, Bay BH, Xie J, Zhang Y, Demokritou P, et al. Nano-TiO (2) drives epithelial-mesenchymal transition in intestinal epithelial cancer cells. *Small* 2018;14:e1800922.