

GR13-type plasmids in *Acinetobacter* potentiate the accumulation and horizontal transfer of diverse accessory genes

Moran, Robert A; Liu, Haiyang; Doughty, Emma L; Hua, Xiaoting; Cummins, Elizabeth A; Liveikis, Tomas; McNally, Alan; Zhou, Zhihui; van Schaik, Willem; Yu, Yunsong

DOI:

[10.1099/mgen.0.000840](https://doi.org/10.1099/mgen.0.000840)

License:

Creative Commons: Attribution (CC BY)

Document Version

Publisher's PDF, also known as Version of record

Citation for published version (Harvard):

Moran, RA, Liu, H, Doughty, EL, Hua, X, Cummins, EA, Liveikis, T, McNally, A, Zhou, Z, van Schaik, W & Yu, Y 2022, 'GR13-type plasmids in *Acinetobacter* potentiate the accumulation and horizontal transfer of diverse accessory genes', *Microbial Genomics*, vol. 8, no. 6, 000840. <https://doi.org/10.1099/mgen.0.000840>

[Link to publication on Research at Birmingham portal](#)

General rights

Unless a licence is specified above, all rights (including copyright and moral rights) in this document are retained by the authors and/or the copyright holders. The express permission of the copyright holder must be obtained for any use of this material other than for purposes permitted by law.

- Users may freely distribute the URL that is used to identify this publication.
- Users may download and/or print one copy of the publication from the University of Birmingham research portal for the purpose of private study or non-commercial research.
- User may use extracts from the document in line with the concept of 'fair dealing' under the Copyright, Designs and Patents Act 1988 (?)
- Users may not further distribute the material nor use it for the purposes of commercial gain.

Where a licence is displayed above, please note the terms and conditions of the licence govern your use of this document.

When citing, please reference the published version.

Take down policy

While the University of Birmingham exercises care and attention in making items available there are rare occasions when an item has been uploaded in error or has been deemed to be commercially or otherwise sensitive.

If you believe that this is the case for this document, please contact UBIRA@lists.bham.ac.uk providing details and we will remove access to the work immediately and investigate.

GR13-type plasmids in *Acinetobacter* potentiate the accumulation and horizontal transfer of diverse accessory genes

Robert A. Moran^{1†}, Haiyang Liu^{2,3,4†}, Emma L. Doughty^{1†}, Xiaoting Hua^{2,3,4}, Elizabeth A. Cummins¹, Tomas Liveikis¹, Alan McNally¹, Zhihui Zhou^{2,3,4}, Willem van Schaik^{1,*} and Yunsong Yu^{2,3,4,*}

Abstract

Carbapenem and other antibiotic resistance genes (ARGs) can be found in plasmids in *Acinetobacter*, but many plasmid types in this genus have not been well-characterized. Here we describe the distribution, diversity and evolutionary capacity of *rep* group 13 (GR13) plasmids that are found in *Acinetobacter* species from diverse environments. Our investigation was prompted by the discovery of two GR13 plasmids in *A. baumannii* isolated in an intensive care unit (ICU). The plasmids harbour distinct accessory genes: pDETAB5 contains *bla*_{NDM-1} and genes that confer resistance to four further antibiotic classes, while pDETAB13 carries putative alcohol tolerance determinants. Both plasmids contain multiple *dif* modules, which are flanked by *pdif* sites recognized by XerC/XerD tyrosine recombinases. The ARG-containing *dif* modules in pDETAB5 are almost identical to those found in pDETAB2, a GR34 plasmid from an unrelated *A. baumannii* isolated in the same ICU a month prior. Examination of a further 41 complete, publicly available plasmid sequences revealed that the GR13 pangenome consists of just four core but 1186 accessory genes, 123 in the shell and 1063 in the cloud, reflecting substantial capacity for diversification. The GR13 core genome includes genes for replication and partitioning, and for a putative tyrosine recombinase. Accessory segments encode proteins with diverse putative functions, including for metabolism, antibiotic/heavy metal/alcohol tolerance, restriction-modification, an anti-phage system and multiple toxin-antitoxin systems. The movement of *dif* modules and actions of insertion sequences play an important role in generating diversity in GR13 plasmids. Discrete GR13 plasmid lineages are internationally disseminated and found in multiple *Acinetobacter* species, which suggests they are important platforms for the accumulation, horizontal transmission and persistence of accessory genes in this genus.

DATA SUMMARY

Sequencing reads and the complete sequences of the chromosomes and plasmids of *A. baumannii* DETAB-E227 and *A. baumannii* DETAB-B39 are available from NCBI BioSample accessions SAMN18498586 and SAMN18498587, respectively, under BioProject accession PRJNA716893. Complete sequences can be found in the GenBank nucleotide database under accession numbers CP073060-CP073061 and CP072526-CP072529. Supplementary files are available on Figshare (<https://doi.org/10.6084/m9.figshare.19494596>) [1].

INTRODUCTION

Acinetobacter is a genus of Gram-negative coccobacilli that are typically found in soils and moist environments but are also well-adapted for persistence in hospital settings [2]. *A. baumannii* is the most prominent pathogenic species and can cause human infections with high mortality rates, particularly given some strains exhibit extensive antibiotic resistance that severely

Received 13 January 2022; Accepted 30 April 2022; Published 22 June 2022

Author affiliations: ¹Institute of Microbiology and Infection, College of Medical and Dental Sciences, University of Birmingham, Birmingham B15 2TT, UK; ²Department of Infectious Diseases, Sir Run Run Shaw Hospital, Zhejiang University School of Medicine, Hangzhou, Zhejiang, 310016, PR China; ³Key Laboratory of Microbial Technology and Bioinformatics of Zhejiang Province, Hangzhou, Zhejiang, 310016, PR China; ⁴Regional Medical Center for National Institute of Respiratory Diseases, Sir Run Run Shaw Hospital, Zhejiang University School of Medicine, Hangzhou, Zhejiang, 310016, PR China.

***Correspondence:** Willem van Schaik, w.vanschaik@bham.ac.uk; Yunsong Yu, yvys119@zju.edu.cn

Keywords: *Acinetobacter*; plasmids; Microbial Genomics; *dif* modules.

Abbreviations: GR, *rep* group; IS, insertion sequence; *pdif*, plasmid-*dif*; SNP, single nucleotide polymorphism.

†These authors contributed equally to this work

Data statement: All supporting data, code and protocols have been provided within the article or through supplementary data files. Four supplementary figures and six supplementary tables are available with the online version of this article.

000840 © 2022 The Authors



This is an open-access article distributed under the terms of the Creative Commons Attribution License. This article was made open access via a Publish and Read agreement between the Microbiology Society and the corresponding author's institution.

Impact Statement

Acinetobacter species are particularly well-adapted for persistence in hospital environments where they pose a life-threatening infection risk to the most clinically vulnerable patients. Plasmids with the potential to transfer multiple antibiotic resistance determinants between *Acinetobacter* species are therefore concerning, but most are not well-characterized. This work sheds further light on the poorly understood mobile gene pool associated with *Acinetobacter*. We show here that GR13 plasmids carry a small set of core genes but have access to a highly diverse set of accessory segments that might provide fitness advantages under certain conditions. The complex evolutionary dynamics of GR13 plasmids appear to be driven by the exchange of *dif* modules and by the actions of a diverse population of insertion sequences. The novel *dif* modules characterized here emphasize the broader importance of these elements to the dissemination of accessory genes in *Acinetobacter*. This study has improved our understanding of the diversity and distribution of *dif* modules, plasmids that carry them, and how both disseminate in the continuum of *Acinetobacter* populations that link hospitals and the wider environment.

compromises treatment [2, 3]. While less commonly reported, drug-resistant infections caused by other *Acinetobacter* species are an emerging threat [4–8].

Plasmids in *Acinetobacter* are typed according to replication initiation gene (*rep*) identity and have been divided into *rep* groups (GRs) [9]. A recent review listed 33 *rep* groups [10], and we have since described an additional group, GR34 [11]. Plasmids carrying clinically significant antibiotic resistance genes (ARGs) have been reported in *A. baumannii* [12–16] and in other *Acinetobacter* species [7, 8, 17–19], clearly indicating their important role in the emergence and transmission of antimicrobial resistance in this genus. Few plasmid groups have been the subject of comparative analyses, so how the remaining types evolve or are distributed, geographically and throughout the *Acinetobacter* genus, is poorly understood and their genetic structures remain largely undescribed.

Some *Acinetobacter* plasmids carry multiple pairs of recombination sites that resemble chromosomal *dif* sites, which are targets for XerC and XerD tyrosine recombinases [20]. These have been called plasmid-*dif* (*pdif*) sites [12], and have been shown to be recognized by *A. baumannii* XerC and XerD [21]. ARGs have been found in *pdif*-flanked structures called *dif* modules, including the carbapenemase genes *bla*_{OXA-24} [22], *bla*_{OXA-58} [23] and *bla*_{OXA-72} [24], the tetracycline resistance gene *tet*(39) [12], the macrolide resistance genes *msr*(E)-*mph*(E) [12], the aminoglycoside resistance gene *aacC2d* and the sulphonamide resistance gene *sul2* [11]. Identical ARG-containing *dif* modules have been found in multiple contexts and in different types of plasmids [12]. Further *dif* modules, including those carrying genes for chromium resistance, a serine recombinase, RND efflux system and multiple toxin–antitoxin systems have also been described [11, 12, 25, 26]. Given the apparent importance of *dif* modules to the evolution of some *Acinetobacter* plasmids, it is important to understand the breadth of genetic cargo they carry and which types of plasmids can interact with them.

We recently described the GR34 family of plasmids that share a 10 kbp core segment but can grow to as large as 190 kbp through the acquisition of *dif* modules [11]. The exemplar GR34 plasmid, pDETAB2, is from an *A. baumannii* isolated in an intensive care unit (ICU) in Hangzhou, China, and carries six ARGs in a series of *dif* modules [11]. Here, we report two GR13-type plasmids found in unrelated *A. baumannii* isolated 1 and 2 months later in that same ICU, one cryptic and the other carrying ARG-containing *dif* modules identical to ones in pDETAB2. GR13 plasmids have not been studied in detail since the group was defined using *A. baumannii* plasmid p3ABAYE as a reference in 2010 [9]. In order to contextualize the differences between them, we undertook a detailed comparative analysis of the ICU GR13 plasmids and 41 complete GR13 plasmid sequences from GenBank. This facilitated the first evaluation of the distribution, gene content, structures and evolutionary characteristics of the GR13 plasmid family.

METHODS

Ethics

Ethical approval and informed consent were obtained by the Sir Run Run Shaw Hospital local ethics committee (approval number 20190802–1).

Bacterial isolation and antibiotic susceptibility testing

DETAB-E227 was isolated from a cleaning cart surface swab and DETAB-P39 from a patient rectal swab in Sir Run Run Shaw Hospital Intensive Care Unit in Hangzhou, China in 2019. Both samples were cultured on CHROMagar (CHROMagar, Paris, France) containing 2 mg l⁻¹ meropenem at 37°C for 24 h. Isolated colonies of presumptive *A. baumannii* were sub-cultured on Mueller–Hinton agar (MHA) (Oxoid, Hampshire, UK) and incubated at 37°C for 24 h. MICs for imipenem, meropenem, tobramycin, gentamicin, ciprofloxacin, levofloxacin, ceftazidime, colistin and tigecycline were determined using broth microdilution with results interpreted according to CLSI 2019 guidelines.

Plasmid transfer assays

DETAB-E227 was filter-mated with a rifampicin-resistant derivative of *A. baumannii* ATCC 17978 or *A. nosocomialis* strain XH1816 as described previously [27]. XH1816 is a colistin-resistant, meropenem-sensitive clinical *A. nosocomialis* strain that was isolated from a human urine sample in 2011. Transconjugants were selected on MHA supplemented with rifampicin ($50 \mu\text{g ml}^{-1}$) and meropenem ($8 \mu\text{g ml}^{-1}$). The identity of transconjugants was confirmed through PFGE fingerprinting after digestion of genomic DNA with *ApaI*. Transconjugants were tested for the presence of pDETAB4 and pDETAB5 by PCR with primers that target the replication genes of each plasmid (Table S1). ATCC 17978 transconjugants containing pDETAB2 were mated with XH1816 as above, with transconjugants selected on MHA supplemented with colistin ($2 \mu\text{g ml}^{-1}$) and meropenem ($8 \mu\text{g ml}^{-1}$).

S1 nuclease digestion, PFGE and Southern blot

To confirm transfer had occurred, plasmids were visualized following S1 nuclease treatment via PFGE, and the locations of resistance genes were confirmed via Southern blot as described previously [28]. Briefly, genomic DNA was digested with S1 nuclease (TaKaRa, Kusatsu, Japan) at 37°C for 20 min. Treated DNA was loaded on a 1% agarose Gold gel and PFGE was performed at 14°C for 18 h, with 6 V/cm and pulse times from 2.16 to 63.8 s using the Bio-Rad CHEF-Mapper XA machine (Bio-Rad, CA, USA). DNA was transferred to a positively charged nylon membrane (Millipore, Billerica, MA, USA) by the capillary method and hybridized with digoxigenin-labelled *bla*_{OXA-58} and *bla*_{NDM-1}-specific probes with an NBT/BCIP colour detection kit (Roche, Mannheim, Germany) according to the manufacturer's instructions. *XbaI*-treated genomic DNA from *Salmonella enterica* H9812 was used as a size marker.

Whole-genome sequencing and analysis

Genomic DNA was extracted from *A. baumannii* DETAB-E227 and DETAB-P39 using a Qiagen minikit (Qiagen, Hilden, Germany) in accordance with the manufacturer's instructions. Whole-genome sequencing was performed using both the Illumina HiSeq (Illumina, San Diego, USA) and the Oxford Nanopore GridION (Nanopore, Oxford, UK) platforms (Tianke, Zhejiang, China). Nanopore reads were trimmed with Filtlong v0.2.0 (<https://github.com/rrwick/Filtlong>) under default settings targeting approximately 100-fold genome coverage and Illumina sequence reads were trimmed with Shovill v1.1.0 under default (<https://github.com/tseemann/shovill>). *De novo* assembly of the Illumina and Nanopore reads was performed using Unicycler v0.4.8 [29]. MLST with the Pasteur and Oxford schemes was performed using mlst (<https://github.com/tseemann/mlst>) [30, 31].

Plasmid characterization

For alignment and visualization, all plasmids were opened in the same orientation and at the same position 48 bp upstream of the GR13 *rep* gene. ARGs and *rep* genes were identified using ABRicate v0.8.13 (<https://github.com/tseemann/abricate>) with the ResFinder [32] and pAci (File S1) databases, respectively. Insertion sequences were identified using the ISFinder database [33]. To screen the entire plasmid collection, an offline version of the ISFinder nucleotide database was constructed from an available version from October 2020 (<https://github.com/thanhviet/ISfinder-sequences>). The database was used with abricate, initially with a minimum nucleotide identity threshold of 80% and coverage threshold of 90% to identify putative novel IS. Representative sequences with greater than 90% coverage and between 80 and 95% nucleotide identity were validated manually and those that represented novel IS (Table S2) were submitted to ISFinder, named, and added to the database. The resulting database was used with 95% identity and coverage thresholds, and sequences identified were considered isoforms of the representative IS or putative IS in accordance with ISFinder's directions for isoform identification. Gene Construction Kit (Textco Biosoftware, Raleigh, USA) was used to annotate and examine plasmid sequences.

Plasmid pangenome analysis

Plasmids were annotated with Prokka 1.14.6 [34], using reference protein sequences to standardise annotations. Reference sequences were obtained from the NCBI Identical Protein Groups resource by querying 'Acinetobacter[Organism] AND (uniprot[filter] OR refseq[filter])'. As insertion sequences were analysed separately, lines matching 'transposase' or 'product=IS' were removed from gff annotation files. Pangenomes and a core-gene alignment were constructed from these annotations using Panaroo 0.1.0 [35], reducing contamination-removal processes using --mode relaxed --no_clean_edges --min_trailing_support 0 min_edge_support_sv 0 --trailing_recursive 0 to reflect the use of complete sequences of highly mosaic plasmids. Functional annotation based on the eggNog orthology database version 5.0.2 [36] was performed with emapper-2.1.6-43-gd6e6cdf [37] using Diamond version 2.0.13 [38] for protein sequence alignments.

Core-gene analysis

Plasmid *rep* gene sequences were extracted manually, then aligned using MAFFT version 7 [39] with the GNS-i iterative refinement method and additional parameters, --reorder --anysymbol --maxiterate 2 --retree 1 --globalpair. Low-confidence residues in the alignment were masked with GUIDANCE2 [40]. Phylogenies were constructed from the *rep* gene alignment using RaxML version 8.2.12 [41] and the GTRGAMMA model with automated bootstrapping.

Table 1. DETAB-E227 and DETAB-P39 genome characteristics

Isolate	DNA element	Replicon type	Size (bp)	% GC	Antibiotic resistance genes
DETAB-E227	chromosome	–	3 749 086	39.1	–*
	pDETAB4	GR24	113 682	42.0	<i>sul2</i> , <i>tet(B)</i>
	pDETAB5	GR13	97 035	41.5	<i>bla</i> _{OXA-58} , <i>bla</i> _{NDM-1} , <i>ble</i> _{MBL} , <i>sul2</i> , <i>aacC2d</i> , <i>msr(E)-mph(E)</i>
	pDETAB6	Aci3	7 145	32.0	–
DETAB-P39	chromosome	–	3 877 093	38.9	–†
	pDETAB13	GR13	91 083	39.9	–

*The DETAB-E227 chromosome contains the intrinsic genes *oxaAb* (OXA-24) and *ampC* (96.6% identical to *bla*_{ADC-25}).

†The DETAB-P39 chromosome contains the intrinsic genes *oxaAb* (OXA-88) and *ampC* (95.9% identical to *bla*_{ADC-25}).

For investigation of core-gene recombination, BLASTn was used to query all plasmid sequences with *parA*, *parB* and *tyr13* from reference plasmid p3ABAYE and identify their homologues. The resulting sequences were aligned with MAFFT as described above and a neighbour-joining phylogeny was constructed. BAPS was used to partition all core-gene phylogenies and the highest level of BAPS discrimination was used to define distinct core-gene variants.

RESULTS

Carbapenem-resistant DETAB-E227 carries a multidrug resistance GR13-type plasmid

DETAB-E227 was resistant to imipenem, meropenem, ceftazidime, gentamicin, tobramycin and ciprofloxacin, but susceptible to colistin and tigecycline (Table S3). The complete genome of DETAB-E227 includes a 3 749 086 bp chromosome and three plasmids, pDETAB4, pDETAB5 and pDETAB6 (Table 1). DETAB-E227 is a novel sequence type according to the Pasteur (ST_{IP}1554: *cpn60-3*, *fusA-3*, *gltA-2*, *pyrG-79*, *recA-3*, *rplB-4*, *rpoB-4*) and Oxford (ST_{OX}2210: *cpn60-1*, *gdhB-208*, *gltA-1*, *gpi-171*, *gyrB-231*, *recA-1*, *rpoD-153*) MLST schemes.

Nine antibiotic resistance genes were found in the DETAB-E227 genome (Table 1). Two of these, *bla*_{ADC-25} and *bla*_{OXA-424} are the native *ampC* and *oxaAb* β-lactamase genes found in the chromosome. The *sul2* and *tet(B)* genes are in the 113 682 bp GR24-type plasmid pDETAB4 and the remaining resistance genes, *bla*_{NDM-1}, *bla*_{OXA-58}, *ble*_{MBL}, *aacC2d* [also called *aac(3′)-IId*], *msr(E)-mph(E)* and a second copy of *sul2* are in the 97 035 bp GR13-type plasmid pDETAB5 (Table 1, Fig. 1a).

In three independent conjugation experiments, pDETAB5 transferred from DETAB-E227 to *A. baumannii* ATCC 17978 at a mean frequency of 6.96×10^{-7} transconjugants per donor (Table S4). The presence of pDETAB5 in ATCC 17978 transconjugants was confirmed using S1-PFGE, Southern blotting targeting the *bla*_{NDM-1} and *bla*_{OXA-58} genes, and PCR targeting the pDETAB5 *rep* gene (Fig. S1). pDETAB4 was not detected in transconjugants and pDETAB6 was not tested for. pDETAB5 did not transfer from DETAB-E227 to *A. nosocomialis* XH1816 or from ATCC 17978 to XH1816 in three independent experiments.

pDETAB5 resembles the GR34 plasmid pDETAB2

The combination of ARGs in pDETAB5 resembles that in the GR34 plasmid pDETAB2, found in a ST_{IP}138 *A. baumannii* isolated in the same ICU 1 month prior to DETAB-E227 [11]. pDETAB5 contains 14 *pdif* sites (Fig. 1a) and pDETAB2 contains 16. Alignment of pDETAB5 and pDETAB2 reveals that approximately 63 kbp of the pDETAB2 sequence is present in pDETAB5 (Fig. 1b). The sequence they share includes multiple *dif* modules but not the region of pDETAB2 that has been identified as core to GR34 plasmids [11]. The *aacC2d*, *bla*_{OXA-58} and *msr(E)-mph(E)*-containing *dif* modules in pDETAB2 and pDETAB5 are identical and their *sul2*-containing modules differ only through a 132 bp deletion in the copy of IS1006 in pDETAB2. Other *dif* modules shared by the plasmids encode HigAB-like and AbkAB-like toxin–antitoxins, a putative serine recombinase and a putative RND efflux system.

The *bla*_{NDM-1} and *ble*_{MBL} genes in pDETAB5 and pDETAB2 are in different contexts. In pDETAB2, the *bla*_{NDM-1} and *ble*_{MBL} genes are in a complete copy of Tn125 inserted in a 696 bp *dif* module that contains putative toxin–antitoxin genes [11]. This module is uninterrupted in pDETAB5 (Fig. 1a) and instead, the *bla*_{NDM-1} and *ble*_{MBL} genes are in a partial copy of Tn125 that retains one copy of ISAb125 and 3062 bp of the passenger segment (labelled red line in Fig. 1b). This indicates that, despite sharing a collection of *dif* modules that must have a common origin, pDETAB2 and pDETAB5 acquired *bla*_{NDM-1} independently in distinct events.

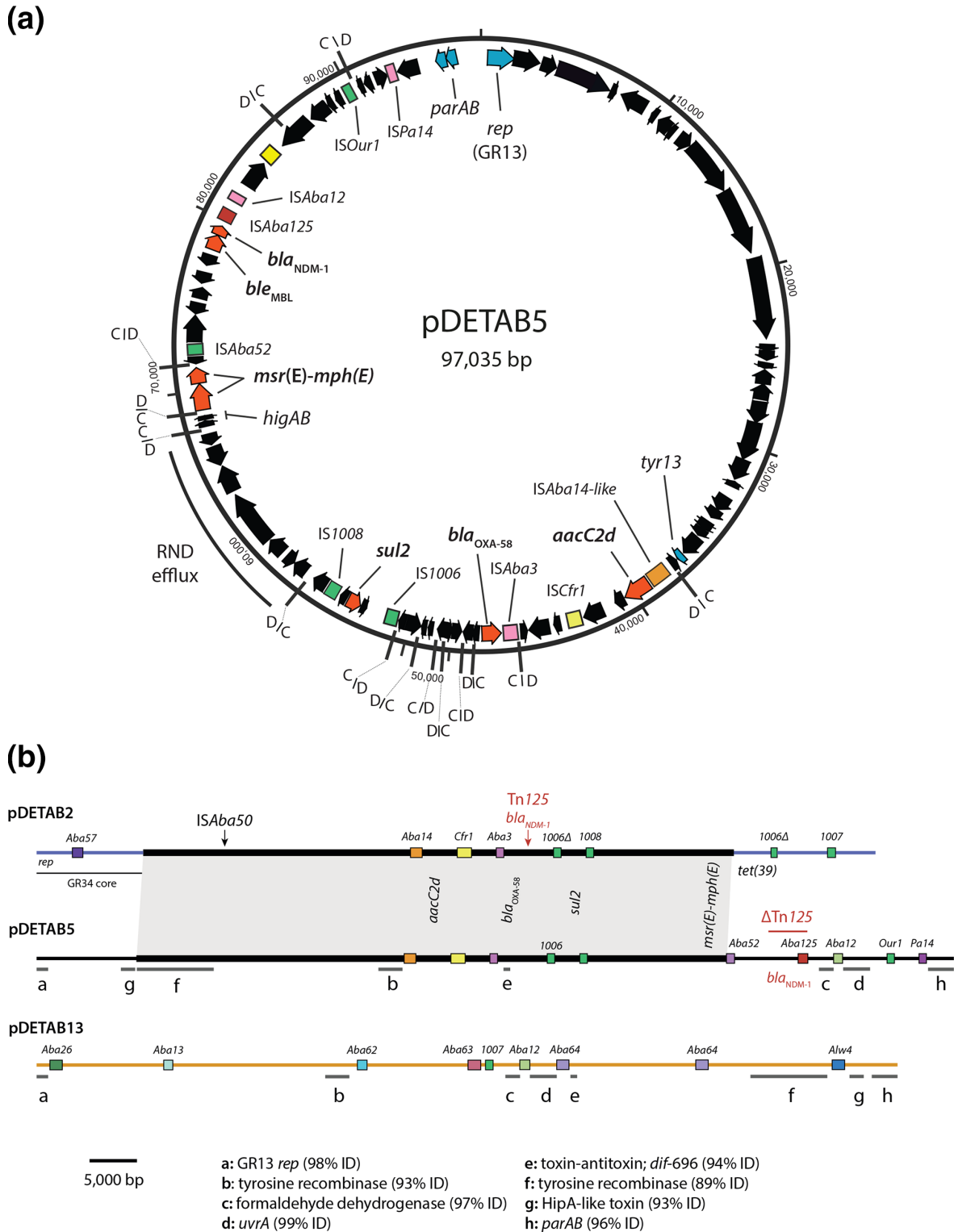


Fig. 1. GR13 plasmid pDETAB5. (a) Circular map of pDETAB5 drawn from GenBank accession CP072528. Plasmid sequence is shown as a black line, with arrows inside representing ORFs. Coloured boxes represent IS. Black lines marked 'C/D' or 'D/C' represent *pdif* sites and indicate their orientations. Arrows filled with blue and labelled *rep*, *parAB* and *tyr13* represent the GR13 genes of pDETAB5. (b) Linear maps of pDETAB2, pDETAB5 and pDETAB13, drawn to scale from GenBank accessions CP047975, CP072528 and CP073061. Near-identical sequences in pDETAB2 and pDETAB5 are bridged by grey shading and homologous regions of pDETAB5 and pDETAB13 are marked by lines labelled 'a' to 'h'. IS are shown as coloured, labelled boxes and the locations of ARGs are indicated.

pDETAB13 of carbapenem-sensitive DETAB-P39 is only distantly related to pDETAB5

The complete genome of DETAB-P39 includes a 3877093 bp chromosome and the 91083 bp plasmid pDETAB13 (Fig. S2). DETAB-39 is ST_{IP}221 and ST_{OX}351. Despite growing on the initial meropenem-supplemented CHROMagar plate, DETAB-P39 was phenotypically sensitive to meropenem and to all other antibiotics tested (Table S3), and its genome does not contain any acquired antibiotic resistance genes.

The *rep* gene of pDETAB13 is 99.4% identical to that of the reference GR13 plasmid pA3ABAYE and 98.3% identical to that of pDETAB5. pDETAB13 contains nine *pdif* sites and nine complete insertion sequences (ISs), including the novel IS*Aba62*, IS*Aba63* and IS*Aba64* (Fig. 1b and S2). Excluding ISs, just 20998 bp of pDETAB13 is homologous to pDETAB5, but the shared sequences are split across eight regions that range from 99–93% identical (Fig. 1b). The shared segments include the *rep* gene and putative partitioning genes *parAB* in a contiguous region (a and h in Fig. 1b), and determinants for several proteins with putative functions: a HipA-like toxin, a toxin–antitoxin system, formaldehyde dehydrogenase, UvrA-like excision endonuclease, and two tyrosine recombinases (also called integrases, Pfam: PF00589). The toxin–antitoxin genes in pDETAB13 are found in a 696 bp *dif* module (*dif*-696b) that is 93.6% identical to the one in pDETAB5 (*dif*-696a). Accumulated SNPs differentiate the *dif*-696 variants, suggesting that the presence of these modules in pDETAB5 and pDETAB13 is not the result of a recent horizontal transfer event.

Some notable ORFs in pDETAB13 are not shared by pDETAB5. A cluster of nine ORFs located in a 10724 bp region, which we termed ADH, between IS*Aba62* and IS*Aba63* includes determinants for a putative transcriptional regulator, putative alcohol dehydrogenases and putative metabolic enzymes including a monooxygenase, amidotransferase, hydrolase, alkene reductase and oxidoreductase. A 2111 bp *dif* module, *dif*-2111, encodes a putative NAD(P)-dependent alcohol dehydrogenase and a LysR-family transcriptional regulator. Three other *dif* modules in pDETAB13 were not assigned functions as they encode hypothetical proteins.

GR13 plasmids have been collected from diverse sources

To characterize the GR13 plasmid family, we conducted a comparative analysis of publicly available sequences. The 1173 bp *rep* gene of reference GR13 plasmid p3ABAYE (GenBank accession CU459140) [9] was used to query the GenBank non-redundant nucleotide database (last search 9 August 2021), and 40 complete plasmid sequences containing *rep* genes that ranged from 99.1–97.3% identical to the query were found, along with a single plasmid with a *rep* gene 79.8% identical to the query (Table S5). These GR13 plasmids are from *A. baumannii*, *A. pittii*, *A. nosocomialis*, *A. johnsonii*, *A. soli*, *A. seifertii* and *A. radioresistans* that were isolated from various cities in China as well as from Japan, Cambodia, Thailand, Vietnam, India, Pakistan, Australia, Chile, the USA, the Czech Republic, France, Germany and the Netherlands between 1986 and 2020 (Table S5). Sources of isolation ranged from human clinical specimens and hospital environments to terrestrial and marine animals and environments (Table S5). The plasmids range in size from 50047 bp to 206659 bp and three carry additional replication genes (Table S5), suggesting that they have formed cointegrates with plasmids from different *rep* groups.

The small GR13 core genome has been subject to recombination

To characterize the gene content of GR13 plasmids, a pangenome was constructed. This consisted of 1190 genes: two considered core (present in 43 plasmids), two soft-core (42 plasmids), 123 shell (7 to 40 plasmids) and 1063 cloud (1 to 6 plasmids).

The four core genes were *rep*, the putative partitioning genes *parA* and *parB*, and a putative tyrosine recombinase gene that we will refer to as *tyr13*. Though *parAB* were found in only 42 of the 43 plasmids by the pangenome approach, using tBLASTn to query the remaining plasmid sequence (CP038259) with the amino acid sequences of ParA and ParB of pDETAB13 revealed equivalent genes with nucleotide identities of 78.8 and 79.8%, respectively. The *parAB* genes were found adjacent to one another in all 43 plasmids and were usually adjacent to *rep*, but *tyr13* was never found adjacent to *rep* or *parAB*.

The conservation of core genes was investigated by using BAPS to place gene sequences into allelic groups that differed by few SNPs and exhibited common SNP patterns that likely arose cumulatively from a recent ancestor. The distribution of *parAB* and *tyr13* allelic groups were visualized relative to a *rep* gene phylogeny (Fig. 2a) and instances of recombination were identified where phylogenetic clusters did not contain *parA*, *parB* and *tyr13* from the same allelic groups. Substitution of *tyr13* genes appears to have occurred on multiple occasions while a single example of *parB* allele substitution was seen in CP022299.

GR13 plasmid lineages have disseminated widely

The *rep* gene phylogeny was used to sub-type GR13 plasmids. The collection was partitioned into four broad-ancestry clusters of plasmids that, apart from CP022299, shared core replication and partitioning genes from the same allelic groups, reflecting their common ancestry. Further *rep* gene variation, as evident in the phylogenetic tree (Fig. 2b), indicated that clusters could be partitioned into epidemiologically relevant plasmid lineages. We have defined three GR13 lineages that are represented by four or more plasmids in this collection that are not separated by any SNPs in the *rep* gene phylogeny (Fig. S3), equivalent to a total *rep* identity of >99.8% for lineage 1 (where the *rep* genes of three plasmids are missing a nucleotide in three different homopolymeric runs, likely due to sequencing errors) and 100% for lineages 2 and 3. Plasmids in the same lineage share significant accessory gene content (Fig. 2b), consistent with them having descended from an ancestral plasmid that contained the same *rep* gene and

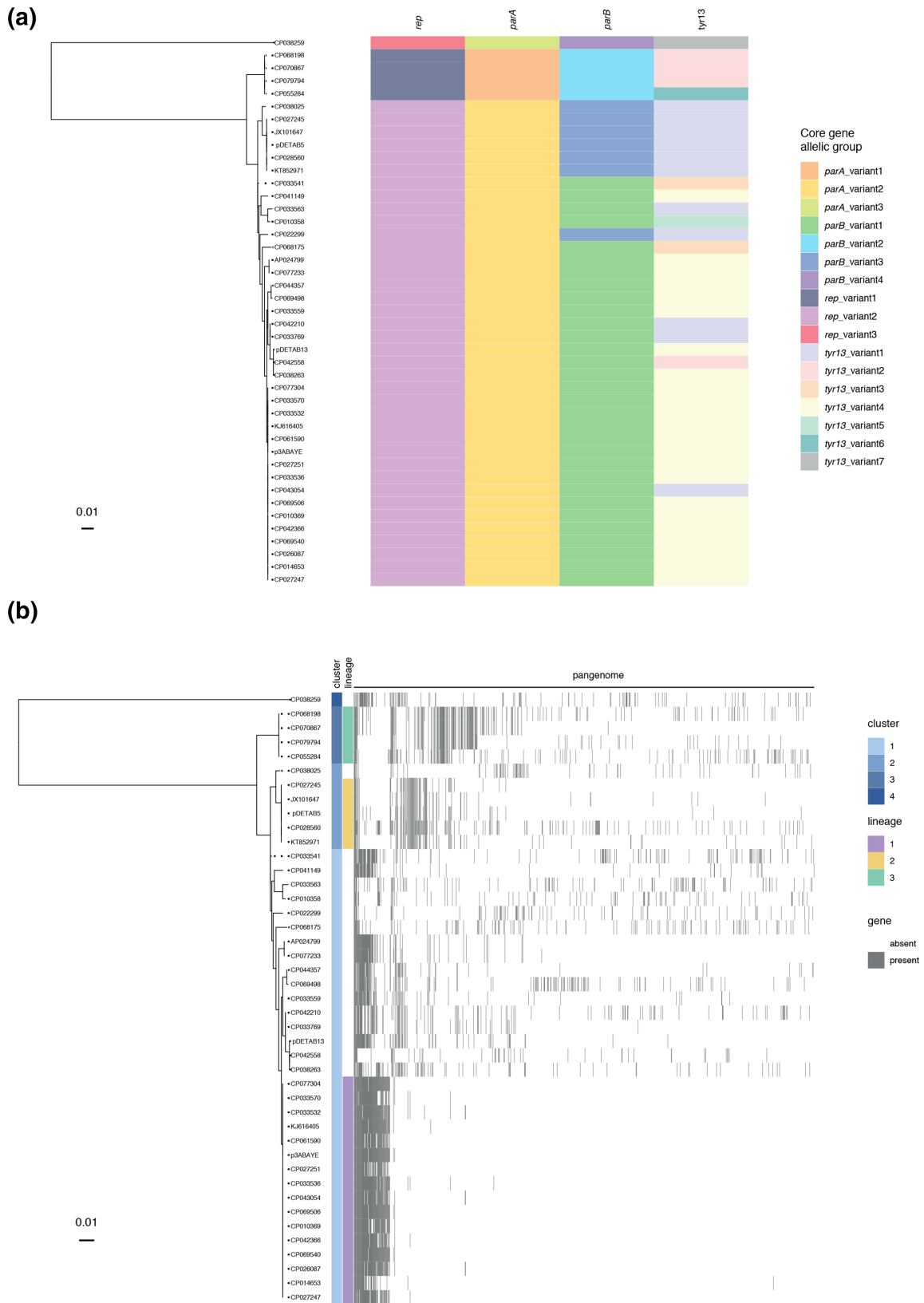


Fig. 2. The GR13 plasmid family pangenome. (a) Plasmid core-gene allelic group identities displayed relative to a *rep* gene phylogeny. (b) GR13 pangenome displayed relative to the *rep* gene phylogeny. Cluster and lineage memberships are indicated to the left of the pangenome visualization.

a conserved set of accessory genes. The presence of accessory genes that differentiate some plasmids from other members of the same lineage highlight their capacity to diversify through gene acquisition.

Host species and sources of isolation varied within lineages, indicating that they have disseminated internationally and between *Acinetobacter* species. The best-represented lineage in this collection, lineage 1, contains the reference GR13 plasmid p3ABAYE and 15 others. p3ABAYE is from a clinical *A. baumannii* isolated in France in 2001, while other members of lineage 1 are from *A. pittii*, *A. nosocomialis* and *A. seifertii* strains from human clinical samples in various Chinese provinces, Australia, Colombia and Germany (Table S5). A single lineage 1 plasmid is derived from marine sediment. Lineage 1 has a well-conserved accessory genome, consisting of 39 core genes (present in all 16 plasmids), 58 shell genes (in two to 15 plasmids) and just two cloud genes (in one plasmid each). Lineage 2 plasmids include pDETAB5 and four other ARG-bearing plasmids. Representatives of lineage 2 have been found in *A. baumannii*, *A. soli* and an isolate of indeterminate *Acinetobacter* species derived from clinical samples, an ICU environment or sewage, but only in mainland China, Taiwan or Vietnam. In contrast, the four representatives of lineage 3 are from *A. johnsonii* or an indeterminate *Acinetobacter* that were isolated across wide geographic and temporal spans: soil from the USA in 1986, a spacecraft-associated clean room in the Netherlands in 2008, an intensive care unit sink in Pakistan in 2016 and bigeye tuna in China in 2018. Taken together, the distributions of lineage 1, 2 and 3 plasmids emphasize the capacity of GR13 plasmids for widespread dissemination and persistence.

Most accessory genes in GR13 plasmids are unique

There were 1090 gene families in the GR13 pangenome, with 4453 genes identified in total. Of the 1090 gene families, 745 could be assigned putative functions with our Prokka annotation and Panaroo approach (68.3%), while 526 (48.2%) and 442 (40.6%) were assigned functions with the COG and KEGG schemes, respectively. COG placed gene families in broad functional categories, most commonly replication and repair (135/526, 25.7%), transcription (83, 15.8%) and inorganic transport and metabolism (78, 14.8%) (File S2). KEGG categories offered more specific functional annotation and facilitated identification of the most common gene functions in the collection. Amongst the 50 most prevalent gene families that were assigned functions (File S2), families with putative metabolic functions were most common. The second most common gene families encode components of toxin–antitoxin systems, with HipA-like and Fic-like toxin-encoding genes the most abundant overall. Other functions of note included DNA integration and recombination (42 gene families, 194 genes, 43 plasmids), antimicrobial resistance (three gene families, six genes, five plasmids), heavy metal resistance (22 gene families, 51 genes, seven plasmids), alcohol tolerance (11 gene families, 172 genes, 32 plasmids), and phage defence (five gene families, 89 genes, 17 plasmids). Some functional groups contained multiple gene families, suggesting that genes with the same functions have been acquired on multiple occasions by different GR13 lineages.

Of the 1186 accessory genes, 746 (62.9%) were found in just a single plasmid each. These so-called ‘singleton genes’ were found in 25 of the 43 plasmids, where they accounted for between 0.7 and 61.4% of total gene content. The pangenome network showed that many singleton genes were found adjacent to one another in long, contiguous sequences that were unique to the plasmids that carried them (File S3). In CP028560 and CP069498, an abundance of singleton genes coincided with the presence of additional *rep* genes of types GR34 and GR24, respectively, indicating that plasmid cointegrate formation was associated with the introduction of significant numbers of genes.

ARG-bearing *dif* modules are subject to rearrangement by insertion sequences

Lineage 2 plasmids and the only other ARG-containing plasmid, CP033563 from an *A. nosocomialis* isolated in Taiwan in 2010, carry ARGs in *dif* modules. Only two plasmids from lineage 2 appear to have acquired additional ARGs: KT852971 has acquired a *sul1*-containing class 1 integron with cassette array *aadB-arr-2-cmlA1-aadA1* and JX101647 has acquired *sul2* and *aphA1* in an insertion within an existing ARG-containing *dif* module, described below.

To assess whether and how individual *dif* modules have evolved since they were acquired by the ancestor of lineage 2 plasmids, their ARG-containing *dif* modules were compared. The *msr*(E)-*mph*(E) module was unchanged between the four plasmids that carried it, but variation was seen across *bla*_{OXA-58} (Fig. 3a), *sul2* (Fig. 3b) and *aacC2d*-containing (Fig. 3c) modules. The novel IS elements IS_{Aso1} and IS_{Aso2}, members of the uncharacterized ISNCY family, were acquired by both the *bla*_{OXA-58} and *sul2*-containing modules in JX101647 (Fig. 3). Both IS inserted in the same orientation adjacent to the XerC binding ends of *pdif* sites that flank their respective *dif* modules (Fig. 3a, b), with the 5 bp immediately adjacent to *pdif* involved in the target site duplication generated by insertion. The IS6/IS26-family element IS1008 fused the *bla*_{OXA-58}-containing module of CP027245 to the remnant of a previously described RND efflux module [11] following a deletion of indeterminate length (Fig. 3a). IS1008 also deleted part of the *sul2*-containing module of CP028560 and brought the remainder adjacent to another sequence, possibly a remnant of a *floR*-containing module as IS1008 has truncated the *floR* gene (Fig. 3b). In JX101647 a partial deletion of the IS_{Aba14}-like element is associated with the acquisition of a 12213 bp segment bounded at one end by an IS_{Our1}-like element and at the other by an IS_{Alw27}-like element (Fig. 3c). The acquired segment includes *sul2* and a truncated copy of Tn5393 that is interrupted by the *aphA1*-containing Tn4352. These examples highlight the capacity of IS to influence the accessory content of *dif* modules through insertion and by mediating deletion events.

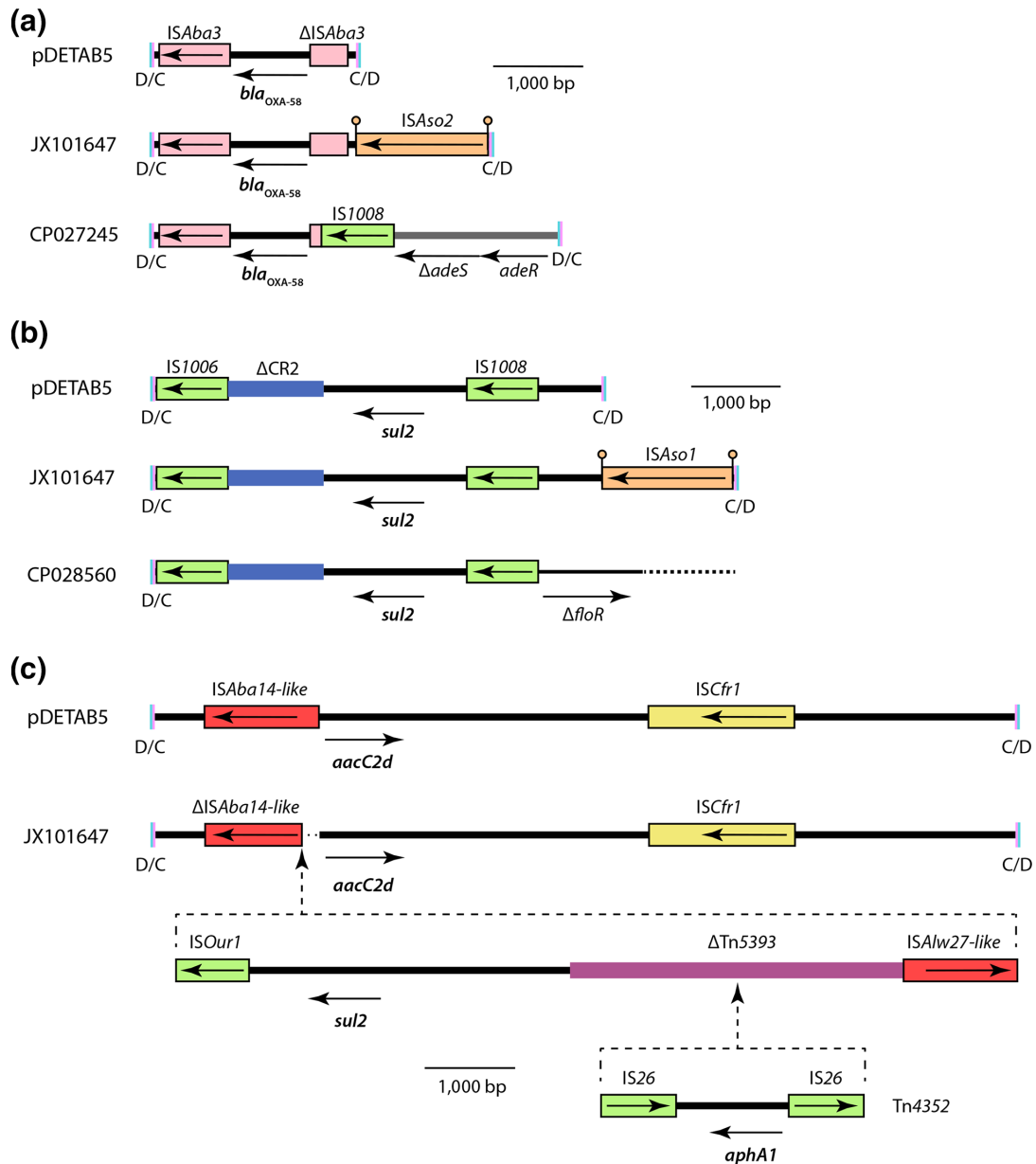


Fig. 3. ARG-containing *dif* module variants. Scaled diagrams of *dif* modules containing (a) *bla*_{OXA-58}, (b) *sul2* and (c) *aacC2d*. The extents and orientations of ORFs are indicated by labelled horizontal arrows and IS are shown as labelled boxes. IS that are the same colour belong to the same family. Drawn to scale from GenBank accessions CP072528, JX101647, CP028560, KT852971 and CP027245.

Diverse accessory genes are found in *dif* modules

To further characterize their potential for mobilizing accessory genes other than the well-known ARGs, we examined the content and distribution of 17 *dif* modules identified in pDETAB5, pDETAB13, p3ABAYE, AP024799, CP022299 and CP068175 (Table S6). The sequences of these modules were used to query the GR13 collection with BLASTN and their distributions are shown in Fig. 4(a). Twelve *dif* modules were only carried by the plasmid or plasmid lineage that they were identified in, but five were found in multiple lineages, suggesting that they have been acquired independently.

Three *dif* modules identified here (*dif*-2111, *dif*-6874 and *dif*-7136) encode putative alcohol dehydrogenases, which may be involved with alcohol tolerance and quorum sensing [42]. The largest module we identified, *dif*-28327, encodes putative copper resistance proteins, and *dif*-7932 encodes a set of putative metabolic proteins that appear to be involved with aromatic compound degradation (Fig. 4b). The *dif*-1769 module carries a putative sulphate permease determinant and is 88% identical to part of a *sulP* module that has been described previously [26]. The *dif*-6620 module found only in the cointegrate plasmid CP022299

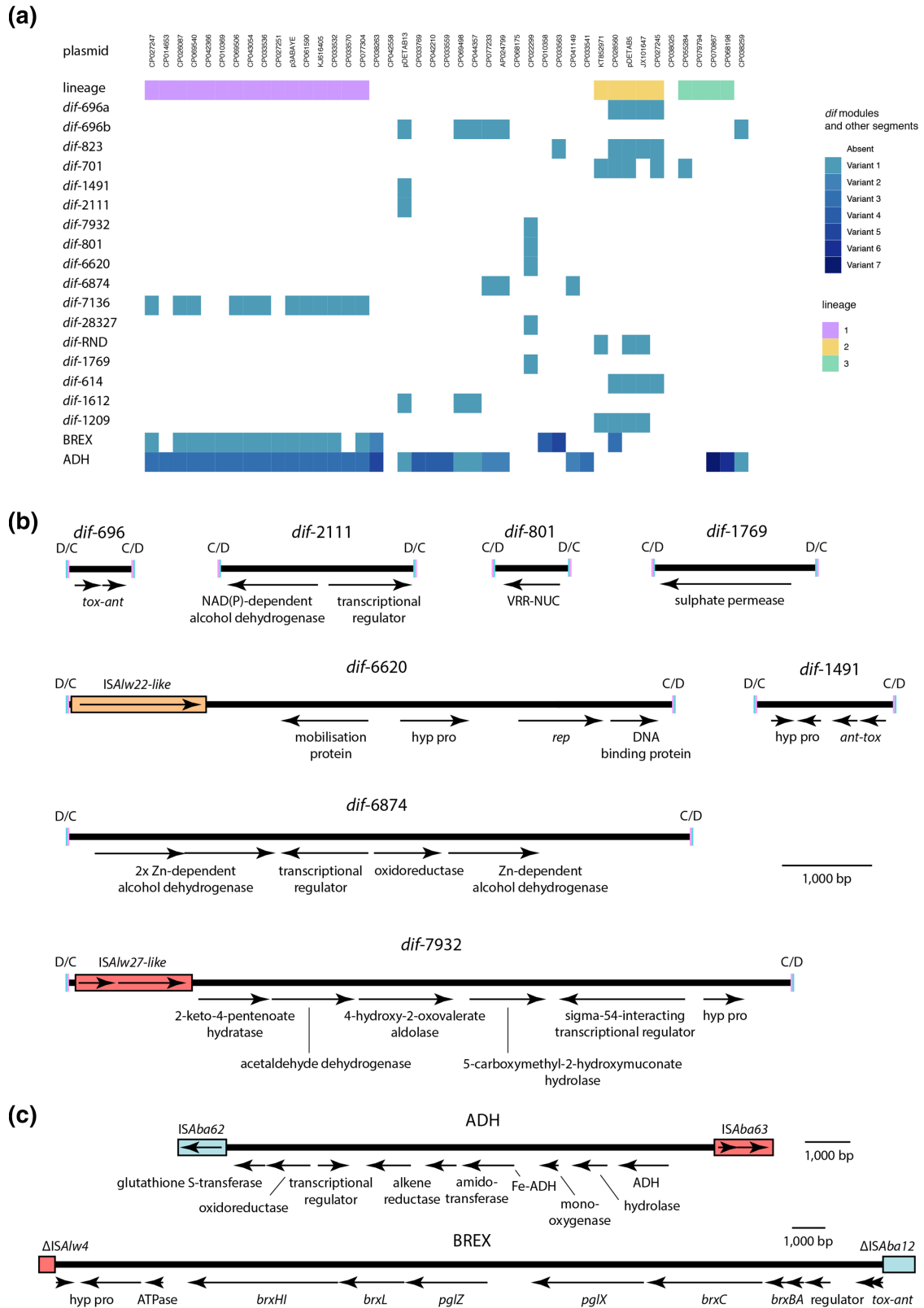


Fig. 4. Novel *dif* modules carrying diverse accessory genes. (a) Presence and absence of *dif* modules identified in GR13 plasmids. Plasmids are ordered as in the *rep* gene phylogeny shown in Fig. 2, and membership of lineages 1, 2 and 3 is indicated. The presence of variant BREX and ADH segments are indicated by different shades of colour (b) Scaled diagrams of selected *dif* modules. (c) Scaled diagrams of accessory gene segments. Sequences in parts (b) and (c) were drawn to scale from GenBank accessions CP072528, CP073061, CU459140, AP024799, CP022299 and CP068175.

contains a *rep* gene 82.3% identical to the reference GR26 *rep* (GenBank accession CP015365), as well as a putative mobilisation gene (Fig. 4b). This appears to be a small plasmid that has been integrated through recombination at *pdif* sites. The remaining modules could not be assigned putative functions, though one of these, *dif*-801, encodes a protein with a VRR-NUC domain (Pfam: PF08774), equivalents to which have been described in restriction endonucleases (43).

Two sets of ORFs from the GR13 shell genome that appeared to be discrete units in the genome network were examined to determine whether they were found in well-conserved *dif* modules. The first set of ORFs resemble determinants for bacteriophage exclusion (BREX) systems [44], and likely have anti-phage functions. The BREX determinants are not part of an identifiable *dif* module. Instead, they are found in a 26140 bp segment flanked by partial copies of *ISAlw4* and *ISAbal2* (Fig. 4c). The same BREX segment is present in 14 of 16 plasmids from lineage 1, while variant sequences are present in four plasmids from elsewhere in the phylogeny (Fig. 4a). The second set of well-conserved ORFs correspond to the ADH segment of pDETAB13 that contains two putative alcohol dehydrogenase determinants, as well as several ORFs with expected metabolic functions and one for a putative transcriptional regulator (Fig. 4c). Variants of the ADH segment are found in 30 of the 43 GR13 plasmids studied here (Fig. 4a).

Diverse insertion sequences shape GR13 plasmid accessory content

We used a version of the ISFinder database to screen the GR13 plasmid collection and assess the abundance, diversity and richness of IS. Individual plasmids contained between one and 34 IS, with up to 19 different IS and up to six copies of the same IS found in a single plasmid (Fig. S4). Sixty-four different IS were found, representing 15 different IS families. These included 17 novel IS that differed from named sequences by greater than 5% nucleotide identity and were characterized, submitted to ISFinder and assigned names as part of this study (Fig. S4, Table S2).

Members of the IS3 (17 different IS) and IS5 (12 different IS) families dominated the IS population, with representatives of one or both found in all but two GR13 plasmids. The next best-represented family was IS6/IS26 (6 different IS), members of which are known to be strongly associated with antibiotic resistance genes [45]. The highest numbers of IS6/IS26 family elements were found in the ARG-containing lineage 2 plasmids, where many were associated with ARG-containing *dif* modules (green in Fig. 3), but these elements were also seen in 13 plasmids that do not contain ARGs. ISNCY-family IS (7 different IS; 26 copies) including *ISAlw22*, *ISAsol*, *ISAsol2* (Figs. 3 and 4B), and 4 more novel IS identified here are distributed throughout the GR13 family.

DISCUSSION

Our discovery of two GR13-type plasmids in unrelated *A. baumannii* strains isolated a month apart in the same ICU, one cryptic and the other conferring multi-drug resistance, prompted an investigation of the wider GR13 plasmid family, which had not been studied previously. GR13 plasmids are found in multiple *Acinetobacter* species from a diverse set of environments. The four-gene core of GR13 plasmids is associated with a diverse accessory genome influenced by the exchange of *dif* modules, the acquisition of translocatable elements and IS-mediated deletions. This characterization of a family of *Acinetobacter* plasmids that can carry clinically significant ARGs adds to a growing body of literature on the accessory gene pool of this important human pathogen and the role of plasmids in generating diversity across this genus.

Diversity in GR13 plasmids: consequences for genomic surveillance and epidemiology

We identified three GR13 lineages on the basis of *rep* gene identity that we found share lineage-specific sets of accessory genes. Although *rep* or core-gene typing cannot account for all accessory gene diversity within GR13 lineages, we found that plasmids in the same lineage share significant gene content. Lineage-specific markers like *rep* and *parAB* might be used in targeted surveillance programmes to detect clinically relevant plasmids such as pDETAB5 and other members of lineage 2. Representatives of lineage 2 have so far only been seen in isolates from China or neighbouring Vietnam (Table S5), where the first example appeared in 2005, but it will be interesting to trace this lineage and monitor the dynamics of its dispersal in epidemiological studies. We have provided the sequences of the *rep* and *parAB* genes that can be used to identify plasmids from lineages 1, 2 and 3 in File S4. These can be used to track the dissemination of GR13 lineages across *Acinetobacter*.

How do GR13 plasmids spread horizontally?

Plasmids from the same GR13 lineages have been found in different host species that have been isolated from various sources and geographic locations. This is clear evidence for their widespread dissemination and ability to replicate in various *Acinetobacter* species. However, the mechanisms responsible for the horizontal transmission of GR13 plasmids remain unclear. In this study, pDETAB5 transferred from DETAB-E227 to *A. baumannii* ATCC 17978 at a relatively low frequency, but failed to transfer from DETAB-E227 or ATCC 17978 to *A. nosocomialis* strain XH1816.

No candidate set of ORFs for a type IV secretion system that might be associated with conjugation were found in pDETAB5 or any of the GR13 plasmids examined here, so it appears they rely on alternative mechanisms for horizontal transfer. In contrast, other large *Acinetobacter* plasmids have been shown to carry conjugation determinants in conserved backbones [13, 16, 46] while small plasmids that carry an origin-of-transfer (*oriT*) and cognate mobilisation genes [25] or *oriT* alone [47] can be mobilized

by co-resident conjugative plasmids. It is possible that the integration of small mobilisable plasmids through recombination at *pdif* sites contributes to the mobility of GR13 plasmids. An example of this is seen in CP022299 where all or part of a putatively mobilisable plasmid is present in the *dif*-6620 module (Fig. 4). The acquisition of *oriT* sequences through small plasmid integration has been described for large plasmids in *Staphylococcus* and *Proteus* [48, 49], though in those cases integration did not involve *pdif* sites. Horizontal transfer in outer membrane vesicles has also been reported in *Acinetobacter* [50, 51] and this, or other passive DNA transfer mechanisms, might play a role in plasmid dispersal. The potential role of ATCC 17978's resident plasmids in horizontal transfer of pDETAB5 was not examined experimentally here, so we cannot exclude the possibility that these played a role.

Site-specific recombination and tyrosine recombinase genes in GR13 plasmids

The importance of site-specific recombination to the evolution of some types of plasmids in *Acinetobacter* has become increasingly evident. XerC and XerD-mediated recombination at *pdif* sites is implicated in the movement of *dif* modules between plasmids of different types [12, 25, 52], and has been shown experimentally to generate cointegrate plasmids [53]. Recombination at *pdif* sites can also resolve cointegrates, potentially generating hybrids of the initial cointegrate-forming molecules [53]. This process likely explains the striking similarity of the GR13 plasmid pDETAB5 and GR34 plasmid pDETAB2 (Fig. 1b). Supporting this hypothesis, another plasmid examined here, CP028560, is a cointegrate with GR13 and GR34 replicons identical to those in pDETAB5 and pDETAB2, and appears to represent an evolutionary intermediate.

Given *pdif* sites appear to play a major role in the evolution of some plasmids, it will be important to define the types of plasmids that carry them and can participate in XerC/D-mediated cointegration events or the exchange of *dif* modules. A recently characterized family of *Acinetobacter* plasmids has pangenome characteristics similar to the GR13 family, and representatives carry mosaic regions that were called 'hotspots' [54]. The movement of *dif* modules might explain the dynamics of these hotspot regions. It will be useful to identify and study specific *pdif*-containing plasmid lineages over sustained periods of time to track small-scale evolutionary changes and further our understanding of the evolutionary consequences of *pdif* carriage.

The *dif* module gene repertoire continues to grow

The first-described *dif* modules contained ARGs, but further studies have revealed that these mobile elements can carry a diverse array of passenger genes. Our characterization of selected *dif* modules in GR13 plasmids expands the known repertoire of genes associated with these elements, further highlighting their important role in the diversification of the *Acinetobacter* accessory genome.

Many modules with diverse functions, including those expected to contribute to clinically relevant traits such as antibiotic resistance or alcohol tolerance, are accompanied by one or more *dif* modules carrying toxin-antitoxin genes [11, 12, 25]. These are expected to contribute to the stability of their host plasmids, and therefore to co-resident *dif* modules. ORFs with toxin-antitoxin functions made up 16% of functionally annotated gene families in GR13 plasmids, suggesting that they play an important role in plasmid persistence. Diversity seen in toxin-antitoxin modules here and elsewhere support the hypothesis that these and other *dif* modules are ancient elements that have co-evolved with the plasmids of *Acinetobacter* [25].

Insertion sequences target and reshape *dif* module-containing plasmids

By definition IS do not encode proteins other than those required for their transposition, but their actions can profoundly influence the evolution of their host molecules [55]. In this study we found cases where IS that are expected to generate target site duplications on insertion are not flanked by them, suggesting that they have mediated deletion events. These deletion events have clearly been responsible for sequence loss from *dif* modules, or the fusion of *dif* modules to other sequences (Fig. 3). It appears IS-mediated deletion events can produce novel, hybrid *dif* modules, though whether these are mobile is likely to depend on the precise sequences of their new flanking *pdif* sites [52]. IS-mediated deletions might also remove *pdif* sites associated with *dif* modules, creating larger segments that might resemble the IS-flanked BREX and ADH segments (Fig. 4c).

Two elements characterized here, IS*Aso1* and IS*Aso2*, are distantly related to one another (encoding 71.0% identical transposases), but inserted in the same orientation immediately adjacent to the XerC binding regions of *pdif* sites (Fig. 3). A further four elements characterized here (IS*Aba69*, IS*Aba70*, IS*Ajo5* and IS*Api2*) are related to IS*Aso1* and IS*Aso2* and appear to exhibit the same target specificity. Together with previous descriptions of IS*Ajo2*-like elements [12, 25], our findings support the notion that this group of IS are '*dif* site hunters'. The presence of *dif* site hunters can be considered strongly indicative of the presence of *pdif* sites in *Acinetobacter* plasmids, and might aid in the identification of plasmid types that participate in the exchange of *dif* modules.

CONCLUSIONS

GR13 plasmids have the capacity to accumulate diverse accessory sequences that may provide fitness advantages in the array of environments inhabited by *Acinetobacter* species. Some accessory modules pose risks to human health as they might contribute to the persistence of *Acinetobacter* populations in hospital environments. GR13 plasmid lineages have disseminated internationally and amongst different *Acinetobacter* species. Genomic surveillance should be coupled with experimental characterization of these

plasmids to better understand their contribution to the diversification and success of *Acinetobacter*, particularly in nosocomial settings.

Funding information

This work was undertaken as part of the DETECTIVE research project funded by the National Natural Science Foundation of China (81861138054, 82072313, 31970128), Zhejiang Province Medical Platform Backbone Talent Plan (2020RC075) and the Medical Research Council (MR/S013660/1). W.v.S was also supported by a Wolfson Research Merit Award (WM160092).

Acknowledgements

We are grateful to the doctors and nurses in the ICU for sample collection. We thank Professor Zhiyong Zong and his team for their careful teaching of sampling methods.

Conflicts of interest

The authors declare that there are no conflicts of interest.

References

- Moran RA, Liu H, Doughty EL, Hua X, Cummins EA, et al. GR13-type plasmids in *Acinetobacter* potentiate the accumulation and horizontal transfer of diverse accessory genes. *Figshare* 2022.
- Visca P, Seifert H, Towner KJ. *Acinetobacter* infection--an emerging threat to human health. *IUBMB Life* 2011;63:1048–1054.
- Hamidian M, Nigro SJ. Emergence, molecular mechanisms and global spread of carbapenem-resistant *Acinetobacter baumannii*. *Microb Genom* 2019;5.
- Endo S, Yano H, Kanamori H, Inomata S, Aoyagi T, et al. High frequency of *Acinetobacter soli* among *Acinetobacter* isolates causing bacteremia at a tertiary hospital in Japan. *J Clin Microbiol* 2014;52:911–915.
- Mittal S, Sharma M, Yadav A, Bala K, Chaudhary U. *Acinetobacter lwoffii* an emerging pathogen in neonatal ICU. *Infect Disord Drug Targets* 2015;15:184–188.
- Sieswerda E, Schade RP, Bosch T, de Vries J, Chamuleau MED, et al. Emergence of carbapenemase-producing *Acinetobacter ursingii* in The Netherlands. *Clin Microbiol Infect* 2017;23:779–781.
- Silva L, Mourão J, Grosso F, Peixe L. Uncommon carbapenemase-encoding plasmids in the clinically emergent *Acinetobacter pittii*. *J Antimicrob Chemother* 2018;73:52–56.
- Yang L, Dong N, Xu C, Ye L, Chen S. Emergence of ST63 pandrug-resistant *Acinetobacter pittii* isolated from an AECOPD patient in China. *Front Cell Infect Microbiol* 2021;11:739211.
- Bertini A, Poirel L, Mugnier PD, Villa L, Nordmann P, et al. Characterization and PCR-based replicon typing of resistance plasmids in *Acinetobacter baumannii*. *Antimicrob Agents Chemother* 2010;54:4168–4177.
- Salgado-Camargo AD, Castro-Jaimes S, Gutierrez-Rios R-M, Lozano LF, Altamirano-Pacheco L, et al. Structure and evolution of *Acinetobacter baumannii* plasmids. *Front Microbiol* 2020;11:1283.
- Liu H, Moran RA, Chen Y, Doughty EL, Hua X, et al. Transferable *Acinetobacter baumannii* plasmid pDETAB2 encodes OXA-58 and NDM-1 and represents a new class of antibiotic resistance plasmids. *J Antimicrob Chemother* 2021;76:1130–1134.
- Blackwell GA, Hall RM. The *tet39* determinant and the *msrE-mpfE* genes in *Acinetobacter* plasmids are each part of discrete modules flanked by inversely oriented *pdfI* (XerC-XerD) sites. *Antimicrob Agents Chemother* 2017;61:e00780-17.
- Hamidian M, Ambrose SJ, Hall RM. A large conjugative *Acinetobacter baumannii* plasmid carrying the *sul2* sulphonamide and *strAB* streptomycin resistance genes. *Plasmid* 2016;87–88:43–50.
- Hamidian M, Hall RM. pACICU2 is a conjugative plasmid of *Acinetobacter* carrying the aminoglycoside resistance transposon *TnaphA6*. *J Antimicrob Chemother* 2014;69:1146–1148.
- Liu L-L, Ji S-J, Ruan Z, Fu Y, Fu Y-Q, et al. Dissemination of *bla*_{OXA-23} in *Acinetobacter* spp. in China: main roles of conjugative plasmid pAZJ221 and transposon *Tn2009*. *Antimicrob Agents Chemother* 2015;59:1998–2005.
- Nigro SJ, Hall RM. Amikacin resistance plasmids in extensively antibiotic-resistant GC2 *Acinetobacter baumannii* from two Australian hospitals. *J Antimicrob Chemother* 2014;69:3435–3437.
- Alatraqchi AG, Mohd Rani F, A Rahman NI, Ismail S, Cleary DW, et al. Complete genome sequencing of *Acinetobacter baumannii* AC1633 and *Acinetobacter nosocomialis* AC1530 unveils a large multidrug-resistant plasmid encoding the NDM-1 and OXA-58 carbapenemases. *mSphere* 2021;6:e01076-20.
- Hayashi W, Iimura M, Horiuchi K, Arai E, Natori T, et al. Occurrence of *bla*_{NDM-1} in a clinical isolate of *Acinetobacter lwoffii* in Japan: comparison of *bla*_{NDM-1}-harboring plasmids between *A. lwoffii* and *A. pittii* Originated from A Hospital Sink. *Jpn J Infect Dis* 2021;74:252–254.
- Li L-H, Yang Y-S, Sun J-R, Huang T-W, Huang W-C, et al. Clinical and molecular characterization of *Acinetobacter seifertii* in Taiwan. *J Antimicrob Chemother* 2021;76:312–321.
- Balalovski P, Grainge I. Mobilization of *pdfI* modules in *Acinetobacter*: A novel mechanism for antibiotic resistance gene shuffling? *Mol Microbiol* 2020;114:699–709.
- Lin DL, Traglia GM, Baker R, Sherratt DJ, Ramirez MS, et al. Functional analysis of the *Acinetobacter baumannii* XerC and XerD site-specific recombinases: potential role in dissemination of resistance genes. *Antibiotics (Basel)* 2020;9:405.
- D'Andrea MM, Giani T, D'Arezzo S, Capone A, Petrosillo N, et al. Characterization of pABVA01, a plasmid encoding the OXA-24 carbapenemase from Italian isolates of *Acinetobacter baumannii*. *Antimicrob Agents Chemother* 2009;53:3528–3533.
- Bertini A, Poirel L, Bernabeu S, Fortini D, Villa L, et al. Multicopy *bla*_{OXA-58} gene as a source of high-level resistance to carbapenems in *Acinetobacter baumannii*. *Antimicrob Agents Chemother* 2007;51:2324–2328.
- Kuo H-Y, Hsu P-J, Chen J-Y, Liao P-C, Lu C-W, et al. Clonal spread of *bla*_{OXA-72}-carrying *Acinetobacter baumannii* sequence type 512 in Taiwan. *Int J Antimicrob Agents* 2016;48:111–113.
- Hamidian M, Hall RM. Genetic structure of four plasmids found in *Acinetobacter baumannii* isolate D36 belonging to lineage 2 of global clone 1. *PLoS One* 2018;13:e0204357.
- Mindlin S, Petrenko A, Petrova M. Chromium resistance genetic element flanked by XerC/XerD recombination sites and its distribution in environmental and clinical *Acinetobacter* strains. *FEMS Microbiol Lett* 2018;365.
- Jin L, Wang R, Wang X, Wang Q, Zhang Y, et al. Emergence of *mcr-1* and carbapenemase genes in hospital sewage water in Beijing, China. *J Antimicrob Chemother* 2018;73:84–87.
- Quan J, Li X, Chen Y, Jiang Y, Zhou Z, et al. Prevalence of *mcr-1* in *Escherichia coli* and *Klebsiella pneumoniae* recovered from bloodstream infections in China: a multicentre longitudinal study. *Lancet Infect Dis* 2017;17:400–410.
- Wick RR, Judd LM, Gorrie CL, Holt KE. Unicycler: Resolving bacterial genome assemblies from short and long sequencing reads. *PLoS Comput Biol* 2017;13:e1005595.

30. Bartual SG, Seifert H, Hippler C, Luzon MAD, Wisplinghoff H, et al. Development of a multilocus sequence typing scheme for characterization of clinical isolates of *Acinetobacter baumannii*. *J Clin Microbiol* 2005;43:4382–4390.
31. Diancourt L, Passet V, Nemeč A, Dijkshoorn L, Brisse S. The population structure of *Acinetobacter baumannii*: expanding multiresistant clones from an ancestral susceptible genetic pool. *PLoS ONE* 2010;5:e10034.
32. Zankari E, Hasman H, Cosentino S, Vestergaard M, Rasmussen S, et al. Identification of acquired antimicrobial resistance genes. *J Antimicrob Chemother* 2012;67:2640–2644.
33. Siguié P, Perochon J, Lestrade L, Mahillon J, Chandler M. ISfinder: the reference centre for bacterial insertion sequences. *Nucleic Acids Res* 2006;34:D32–6.
34. Seemann T. Prokka: rapid prokaryotic genome annotation. *Bioinformatics* 2014;30:2068–2069.
35. Tonkin-Hill G, MacAlasdair N, Ruis C, Weimann A, Horesh G, et al. Producing polished prokaryotic pangenomes with the Panaroo pipeline. *Genome Biol* 2020;21:180.
36. Huerta-Cepas J, Szklarczyk D, Heller D, Hernández-Plaza A, Forslund SK, et al. eggNOG 5.0: a hierarchical, functionally and phylogenetically annotated orthology resource based on 5090 organisms and 2502 viruses. *Nucleic Acids Res* 2019;47:D309–D314.
37. Cantalapiedra CP, Hernández-Plaza A, Letunic I, Bork P, Huerta-Cepas J. eggNOG-mapper v2: functional annotation, orthology assignments, and domain prediction at the metagenomic scale. *Mol Biol Evol* 2021;38:5825–5829.
38. Buchfink B, Reuter K, Drost H-G. Sensitive protein alignments at tree-of-life scale using DIAMOND. *Nat Methods* 2021;18:366–368.
39. Katoh K, Rozewicki J, Yamada KD. MAFFT online service: multiple sequence alignment, interactive sequence choice and visualization. *Brief Bioinform* 2019;20:1160–1166.
40. Sela I, Ashkenazy H, Katoh K, Pupko T. GUIDANCE2: accurate detection of unreliable alignment regions accounting for the uncertainty of multiple parameters. *Nucleic Acids Res* 2015;43:W7–14.
41. Stamatakis A. RAxML version 8: a tool for phylogenetic analysis and post-analysis of large phylogenies. *Bioinformatics* 2014;30:1312–1313.
42. Lin G-H, Hsieh M-C, Shu H-Y. Role of iron-containing alcohol dehydrogenases in *Acinetobacter baumannii* ATCC 19606 stress resistance and virulence. *Int J Mol Sci* 2021;22:9921.
43. Kinch LN, Ginalski K, Rychlewski L, Grishin NV. Identification of novel restriction endonuclease-like fold families among hypothetical proteins. *Nucleic Acids Res* 2005;33:3598–3605.
44. Goldfarb T, Sberro H, Weinstock E, Cohen O, Doron S, et al. BREX is a novel phage resistance system widespread in microbial genomes. *EMBO J* 2015;34:169–183.
45. Harmer CJ, Hall RM. An analysis of the IS6/IS26 family of insertion sequences: is it a single family? *Microb Genom* 2019;5.
46. Nigro SJ, Holt KE, Pickard D, Hall RM. Carbapenem and amikacin resistance on a large conjugative *Acinetobacter baumannii* plasmid. *J Antimicrob Chemother* 2015;70:1259–1261.
47. Blackwell GA, Hall RM. Mobilisation of a small *Acinetobacter* plasmid carrying an *oriT* transfer origin by conjugative RepAci6 plasmids. *Plasmid* 2019;103:36–44.
48. Hua X, Zhang L, Moran RA, Xu Q, Sun L, et al. Cointegration as a mechanism for the evolution of a KPC-producing multidrug resistance plasmid in *Proteus mirabilis* Emerg Microbes Infect 2020;9:1206–1218.
49. O'Brien FG, Yui Eto K, Murphy RJT, Fairhurst HM, Coombs GW, et al. Origin-of-transfer sequences facilitate mobilisation of non-conjugative antimicrobial-resistance plasmids in *Staphylococcus aureus*. *Nucleic Acids Res* 2015;43:7971–7983.
50. Chatterjee S, Mondal A, Mitra S, Basu S. *Acinetobacter baumannii* transfers the *bla*_{NDM-1} gene via outer membrane vesicles. *J Antimicrob Chemother* 2017;72:2201–2207.
51. Rumbo C, Fernández-Moreira E, Merino M, Poza M, Mendez JA, et al. Horizontal transfer of the OXA-24 carbapenemase gene via outer membrane vesicles: a new mechanism of dissemination of carbapenem resistance genes in *Acinetobacter baumannii*. *Antimicrob Agents Chemother* 2011;55:3084–3090.
52. Hamidian M, Ambrose SJ, Blackwell GA, Nigro SJ, Hall RM. An outbreak of multiply antibiotic-resistant ST49:ST128:KL11:OCL8 *Acinetobacter baumannii* isolates at a Sydney hospital. *J Antimicrob Chemother* 2021;76:893–900.
53. Cameranesi MM, Morán-Barrío J, Limansky AS, Repizo GD, Viale AM. Site-specific recombination at XerC/D sites mediates the formation and resolution of plasmid co-integrates carrying a *bla*_{OXA-58} and TnaphA6-resistance module in *Acinetobacter baumannii*. *Front Microbiol* 2018;9:66.
54. Ghaly TM, Paulsen IT, Sajjad A, Tetu SG, Gillings MR. A novel family of *Acinetobacter* mega-plasmids are disseminating multidrug resistance across the globe while acquiring location-specific accessory genes. *Front Microbiol* 2020;11:605952.
55. Vandecraen J, Chandler M, Aertsen A, Van Houdt R. The impact of insertion sequences on bacterial genome plasticity and adaptability. *Crit Rev Microbiol* 2017;43:709–730.

Five reasons to publish your next article with a Microbiology Society journal

1. The Microbiology Society is a not-for-profit organization.
2. We offer fast and rigorous peer review – average time to first decision is 4–6 weeks.
3. Our journals have a global readership with subscriptions held in research institutions around the world.
4. 80% of our authors rate our submission process as 'excellent' or 'very good'.
5. Your article will be published on an interactive journal platform with advanced metrics.

Find out more and submit your article at microbiologyresearch.org.