

## Prognostic models for predicting remission of diabetes following bariatric surgery

Singh, Pushpa; Adderley, Nicola; Hazlehurst, Jonathan; Price, Malcolm; Tahrani, Abd; Nirantharakumar, Krishnarajah; Bellary, Srikanth

DOI:  
[10.2337/dc21-0166](https://doi.org/10.2337/dc21-0166)

License:  
None: All rights reserved

Document Version  
Peer reviewed version

Citation for published version (Harvard):  
Singh, P, Adderley, N, Hazlehurst, J, Price, M, Tahrani, A, Nirantharakumar, K & Bellary, S 2021, 'Prognostic models for predicting remission of diabetes following bariatric surgery: a systematic review and meta-analysis', *Diabetes Care*, vol. 44, no. 11, pp. 2626-2641. <https://doi.org/10.2337/dc21-0166>

[Link to publication on Research at Birmingham portal](#)

### Publisher Rights Statement:

This is an author-created, uncopyedited electronic version of an article accepted for publication in *Diabetes Care*. The American Diabetes Association (ADA), publisher of *Diabetes Care*, is not responsible for any errors or omissions in this version of the manuscript or any version derived from it by third parties. The definitive publisher-authenticated version will be available in a future issue of *Diabetes Care* in print and online at <http://care.diabetesjournals.org>.

### General rights

Unless a licence is specified above, all rights (including copyright and moral rights) in this document are retained by the authors and/or the copyright holders. The express permission of the copyright holder must be obtained for any use of this material other than for purposes permitted by law.

- Users may freely distribute the URL that is used to identify this publication.
- Users may download and/or print one copy of the publication from the University of Birmingham research portal for the purpose of private study or non-commercial research.
- User may use extracts from the document in line with the concept of 'fair dealing' under the Copyright, Designs and Patents Act 1988 (?)
- Users may not further distribute the material nor use it for the purposes of commercial gain.

Where a licence is displayed above, please note the terms and conditions of the licence govern your use of this document.

When citing, please reference the published version.

### Take down policy

While the University of Birmingham exercises care and attention in making items available there are rare occasions when an item has been uploaded in error or has been deemed to be commercially or otherwise sensitive.

If you believe that this is the case for this document, please contact [UBIRA@lists.bham.ac.uk](mailto:UBIRA@lists.bham.ac.uk) providing details and we will remove access to the work immediately and investigate.

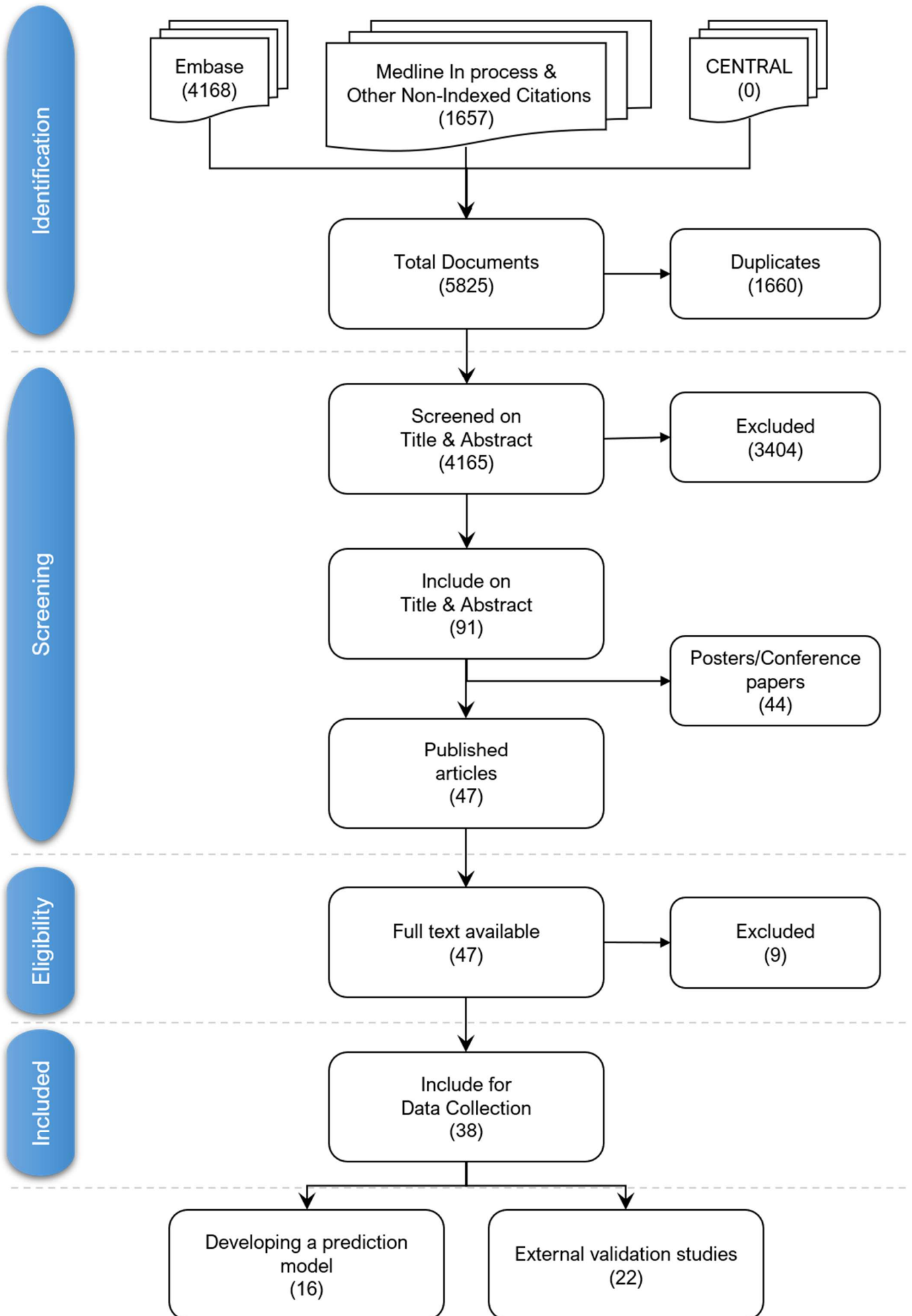
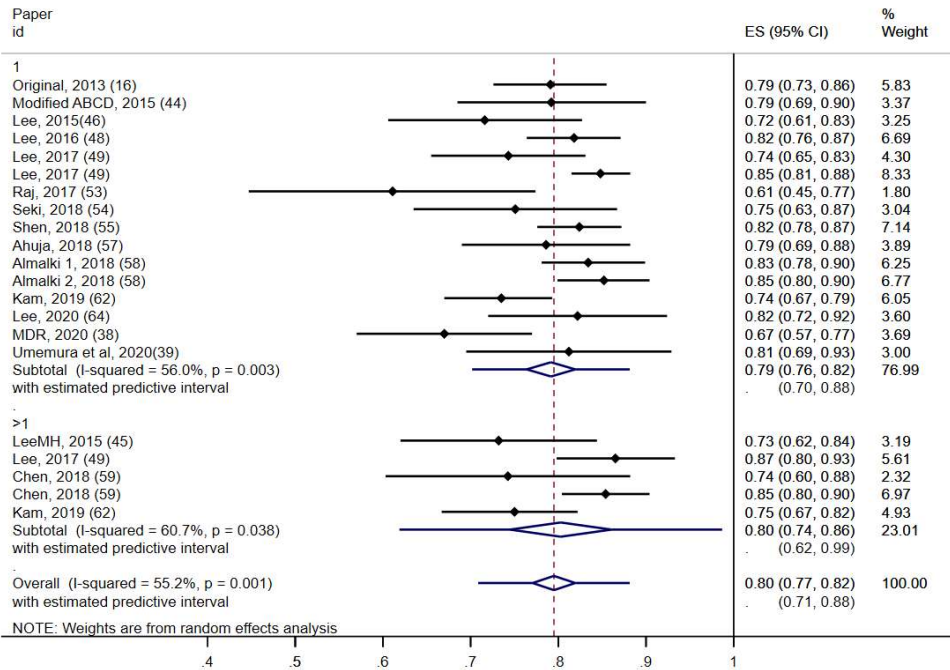
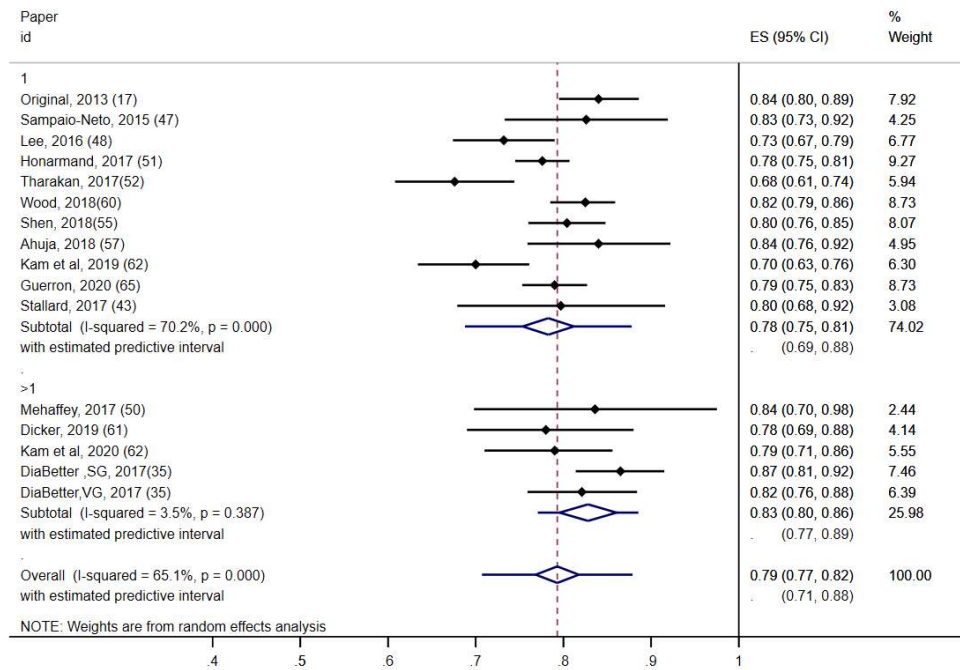


Figure 1: PRISMA flowchart

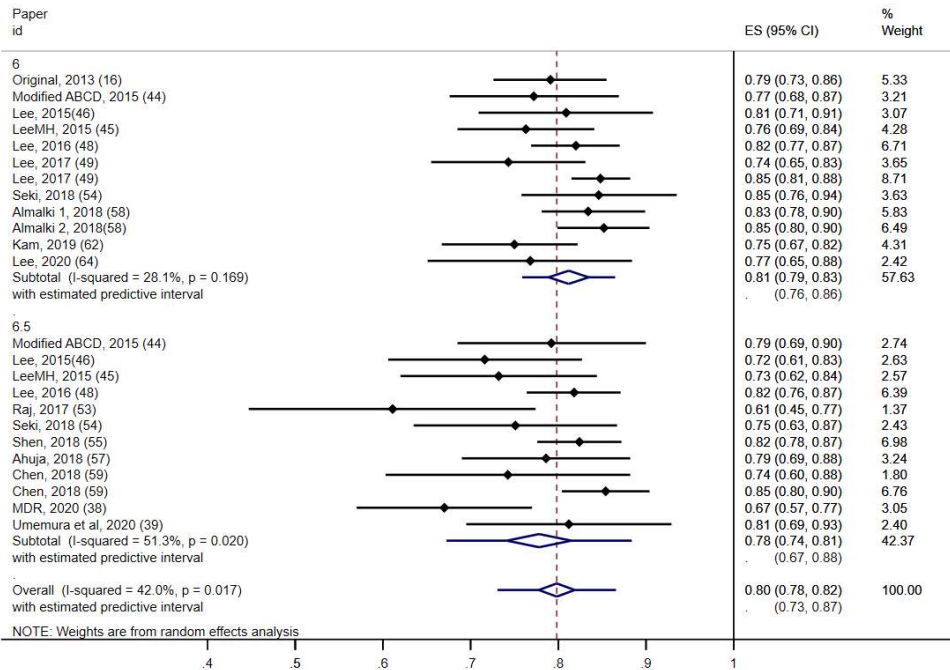
(a) Performance of ABCD based on Follow up



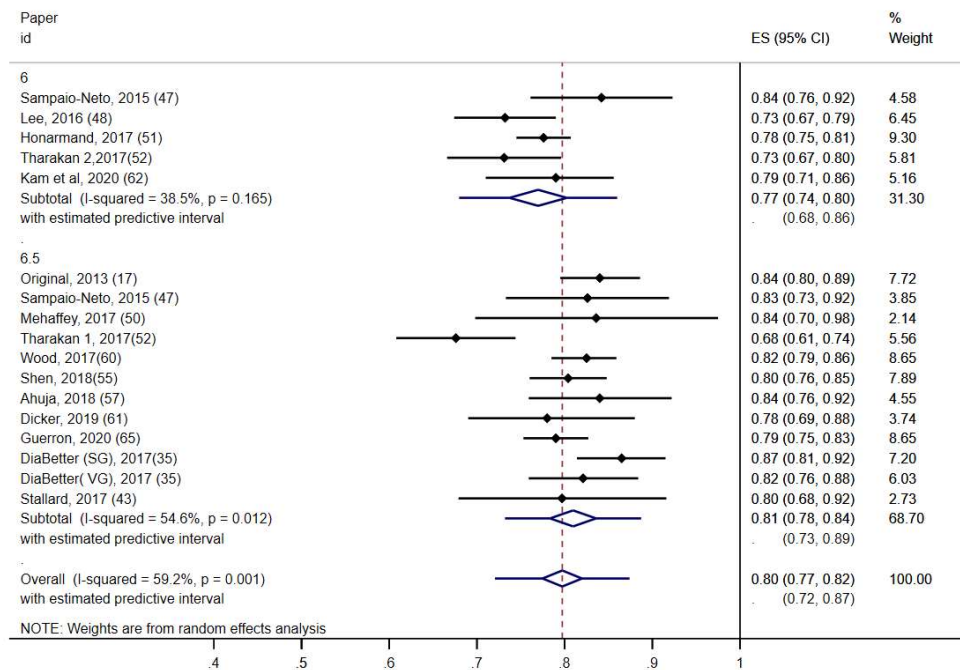
(b) Performance of DiaRem based on Follow up



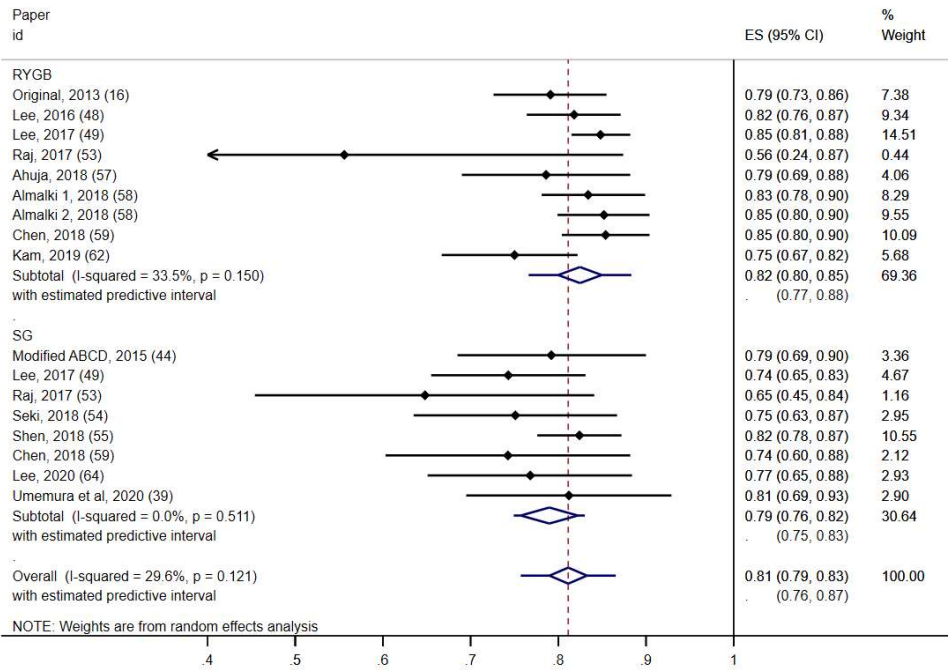
(c) Performance of ABCD based on HbA1c cutoff



(d) Performance of DiaRem based on HbA1c cutoff



(e) Performance of ABCD based on type of surgery



(f) Performance of DiaRem based on type of surgery

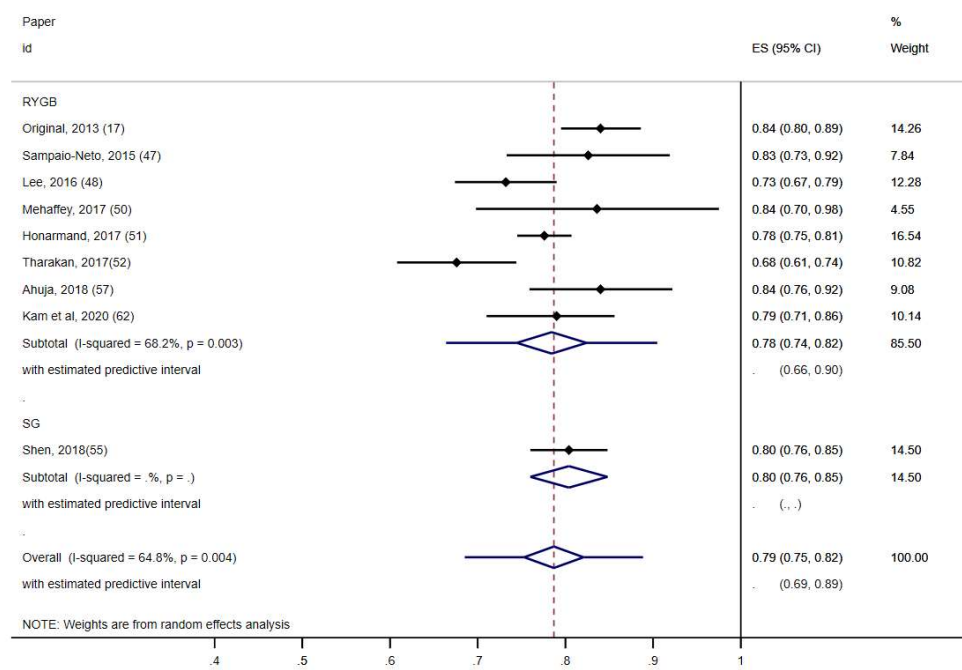


Figure 2 – Meta Analysis (a) – Performance of ABCD based on Follow up; (b) – Performance of DiaRem based on Follow up; (c) Performance of ABCD based on HbA1c cut off defining diabetes duration; (d) - Performance of DiaRem based on HbA1c cut off defining diabetes duration; (e) – Performance of ABCD based in type of bariatric surgery; (f) Performance of ABCD based in type of bariatric surgery; RYGB- Gastric bypass, SG= Sleeve gastrectomy