

## Prolyl-4-hydroxylase 3 maintains $\beta$ -cell glucose metabolism during fatty acid excess in mice

Nasteska, Daniela; Cuzzo, Federica; Vilorio, Katrina; Johnson, Elspeth; Thakker, Alpesh; Bakar, Rula Bany; Westbrook, Rebecca; Barlow, Johnathan; Hoang, Monica ; Joseph, Jamie ; Lavery, Gareth; Akerman, Ildem; Cantley, James; Hodson, Leanne; Tennant, Daniel; Hodson, David

DOI:  
[10.1172/jci.insight.140288](https://doi.org/10.1172/jci.insight.140288)

License:  
Creative Commons: Attribution (CC BY)

*Document Version*  
Publisher's PDF, also known as Version of record

*Citation for published version (Harvard):*  
Nasteska, D, Cuzzo, F, Vilorio, K, Johnson, E, Thakker, A, Bakar, RB, Westbrook, R, Barlow, J, Hoang, M, Joseph, J, Lavery, G, Akerman, I, Cantley, J, Hodson, L, Tennant, D & Hodson, D 2021, 'Prolyl-4-hydroxylase 3 maintains  $\beta$ -cell glucose metabolism during fatty acid excess in mice', *JCI Insight*, vol. 6, no. 16, e140288. <https://doi.org/10.1172/jci.insight.140288>

[Link to publication on Research at Birmingham portal](#)

### General rights

Unless a licence is specified above, all rights (including copyright and moral rights) in this document are retained by the authors and/or the copyright holders. The express permission of the copyright holder must be obtained for any use of this material other than for purposes permitted by law.

- Users may freely distribute the URL that is used to identify this publication.
- Users may download and/or print one copy of the publication from the University of Birmingham research portal for the purpose of private study or non-commercial research.
- User may use extracts from the document in line with the concept of 'fair dealing' under the Copyright, Designs and Patents Act 1988 (?)
- Users may not further distribute the material nor use it for the purposes of commercial gain.

Where a licence is displayed above, please note the terms and conditions of the licence govern your use of this document.

When citing, please reference the published version.

### Take down policy

While the University of Birmingham exercises care and attention in making items available there are rare occasions when an item has been uploaded in error or has been deemed to be commercially or otherwise sensitive.

If you believe that this is the case for this document, please contact [UBIRA@lists.bham.ac.uk](mailto:UBIRA@lists.bham.ac.uk) providing details and we will remove access to the work immediately and investigate.

## Prolyl-4-hydroxylase 3 maintains $\beta$ cell glucose metabolism during fatty acid excess in mice

Daniela Nasteska, ... , Daniel A. Tennant, David J. Hodson

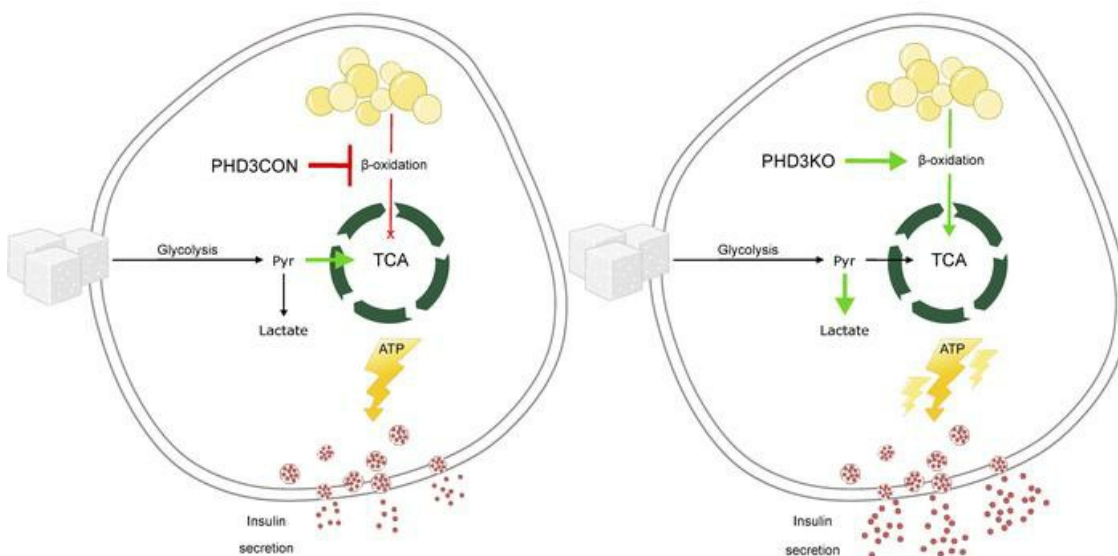
*JCI Insight.* 2021;6(16):e140288. <https://doi.org/10.1172/jci.insight.140288>.

Research Article

Endocrinology

Metabolism

### Graphical abstract



Find the latest version:

<https://jci.me/140288/pdf>



# Prolyl-4-hydroxylase 3 maintains $\beta$ cell glucose metabolism during fatty acid excess in mice

Daniela Nasteska,<sup>1,2,3</sup> Federica Cuzzo,<sup>1,2,3</sup> Katrina Vilorio,<sup>1,2,3</sup> Elspeth M. Johnson,<sup>4,5</sup> Alpesh Thakker,<sup>1,2</sup> Rula Bany Bakar,<sup>6</sup> Rebecca L. Westbrook,<sup>1,2</sup> Jonathan P. Barlow,<sup>7</sup> Monica Hoang,<sup>8</sup> Jamie W. Joseph,<sup>8</sup> Gareth G. Lavery,<sup>1,2</sup> Ildem Akerman,<sup>1,2</sup> James Cantley,<sup>6,9</sup> Leanne Hodson,<sup>4,5</sup> Daniel A. Tennant,<sup>1,2</sup> and David J. Hodson<sup>1,2,3</sup>

<sup>1</sup>Institute of Metabolism and Systems Research, University of Birmingham, Birmingham, United Kingdom. <sup>2</sup>Centre for Endocrinology, Diabetes and Metabolism, Birmingham Health Partners, Birmingham, United Kingdom. <sup>3</sup>Centre of Membrane Proteins and Receptors (COMPARE), University of Birmingham, Birmingham, United Kingdom. <sup>4</sup>Oxford Centre for Diabetes, Endocrinology and Metabolism, University of Oxford, Oxford, United Kingdom. <sup>5</sup>NIHR Oxford Biomedical Research Centre, Churchill Hospital, Oxford, United Kingdom. <sup>6</sup>Department of Physiology, Anatomy and Genetics, University of Oxford, Oxford, United Kingdom. <sup>7</sup>Mitochondrial Profiling Centre, School of Sport, Exercise and Rehabilitation Sciences, University of Birmingham, Birmingham, United Kingdom. <sup>8</sup>School of Pharmacy, University of Waterloo, Kitchener, Ontario, Canada. <sup>9</sup>Division of Systems Medicine, School of Medicine, University of Dundee, Dundee, United Kingdom.

The  $\alpha$ -ketoglutarate-dependent dioxygenase, prolyl-4-hydroxylase 3 (PHD3), is an HIF target that uses molecular oxygen to hydroxylate peptidyl prolyl residues. Although PHD3 has been reported to influence cancer cell metabolism and liver insulin sensitivity, relatively little is known about the effects of this highly conserved enzyme in insulin-secreting  $\beta$  cells *in vivo*. Here, we show that the deletion of PHD3 specifically in  $\beta$  cells ( $\beta$ PHD3KO) was associated with impaired glucose homeostasis in mice fed a high-fat diet. In the early stages of dietary fat excess,  $\beta$ PHD3KO islets energetically rewired, leading to defects in the management of pyruvate fate and a shift from glycolysis to increased fatty acid oxidation (FAO). However, under more prolonged metabolic stress, this switch to preferential FAO in  $\beta$ PHD3KO islets was associated with impaired glucose-stimulated ATP/ADP rises,  $\text{Ca}^{2+}$  fluxes, and insulin secretion. Thus, PHD3 might be a pivotal component of the  $\beta$  cell glucose metabolism machinery in mice by suppressing the use of fatty acids as a primary fuel source during the early phases of metabolic stress.

**Authorship note:** DN and FC contributed equally to this work.

**Conflict of interest:** The authors have declared that no conflict of interest exists.

**Copyright:** © 2021, Nasteska et al. This is an open access article published under the terms of the Creative Commons Attribution 4.0 International License.

**Submitted:** May 15, 2020

**Accepted:** July 14, 2021

**Published:** August 23, 2021

**Reference information:** *JCI Insight*. 2021;6(16):e140288.  
<https://doi.org/10.1172/jci.insight.140288>.

## Introduction

The prolyl-hydroxylase domain proteins (PHD1–3) encoded for by the Egl-9 homolog genes are  $\alpha$ -ketoglutarate-dependent dioxygenases, which regulate cell function by catalyzing hydroxylation of peptidyl prolyl residues within various substrates using molecular oxygen (1–4). There are 3 well-described mammalian isozymes, PHD1, PHD2, and PHD3, which were originally described as hydroxylating the  $\alpha$  subunit of the transcription factor HIF under normoxia (4), thus targeting it for polyubiquitylation and proteasomal degradation. When oxygen concentration becomes limited, PHD activity decreases and HIF is stabilized, leading to dimerization with the  $\beta$  subunit and transcriptional regulation of target genes regulating the cellular response to hypoxia (5). Although PHDs are generally regarded to be master HIF regulators, it is becoming increasingly apparent that they target a range of other substrates influencing cell function (6–9).

PHD3 is unusual among the PHDs: it is transcriptionally regulated by HIF1 during hypoxia (10), although it does not always act to destabilize HIF1 (11, 12). A number of roles for PHD3 have been described under conditions of stress or hypoxia, including macrophage influx and neutrophil survival (13, 14), apoptosis in various cancer models (8, 15, 16), and tumor cell survival (ref. 9; reviewed in ref. 17). Due to the dependence of PHD3 on  $\alpha$ -ketoglutarate and oxygen for its activity (18), many of these actions are likely to be mediated through alterations in cell metabolism (19). Indeed, PHD3 increases glucose uptake in cancer cells through interactions with pyruvate kinase M2 (8, 20). In tumors exhibiting mutations in

succinate dehydrogenase, fumarate hydratase, and isocitrate dehydrogenase 1 and 2 (21–23), PHD3 activity is altered by aberrantly high cytosolic concentrations of succinate, fumarate, and 2-hydroxyglutarate, suggesting that inactivation of this enzyme might be involved in the cellular transformation process. PHD3 has more recently been shown to hydroxylate and activate acetyl-CoA carboxylase 2 (ACC2), defined as the fatty acid oxidation gatekeeper, thus decreasing fatty acid breakdown and restraining myeloid cell proliferation during nutrient abundance (24). Together, these studies place PHD3 as a central player in the regulation of glucose and fatty acid utilization with clear implications for metabolic disease risk.

Along these lines, PHD3 has been reported to influence insulin sensitivity in the liver (25, 26), as well as maintaining glucose-stimulated insulin secretion in a rat  $\beta$  cell line (27). However, little is known about how PHD3 might contribute to glucose homeostasis and diabetes risk through effects directly in primary pancreatic  $\beta$  cells. To ensure the appropriate release of insulin,  $\beta$  cells have become well adapted as glucose sensors. Thus, glucose enters the  $\beta$  cell by facilitated diffusion through low-affinity glucose transporters (28), before conversion into glucose-6-phosphate by glucokinase and subsequent splitting into pyruvate (29). The pyruvate then undergoes oxidative metabolism in the mitochondrial matrix through the TCA cycle, driving increases in ATP/ADP ratio and leading to closure of ATP-sensitive  $K^+$  channels (30). This cascade triggers membrane depolarization, opening of voltage-dependent  $Ca^{2+}$  channels, influx of  $Ca^{2+}$ , and  $Ca^{2+}$ -dependent exocytosis of insulin vesicles through interactions with the SNARE machinery (30). Together with repression of hexokinase, monocarboxylic acid transporter 1, and lactate dehydrogenase A (31, 32), stimulus-secretion coupling prevents the inappropriate release of insulin in response to low glucose, amino acids, or lactate.

Given its reported roles in dictating fuel preference, we hypothesized that PHD3 might function as a pivotal component of the  $\beta$  cell glucose-sensing machinery by suppressing the use of fatty acids as an energy source (27). To further investigate PHD3-regulated  $\beta$  cell function in depth, we subjected a model of  $\beta$  cell-specific *Egln3*/PHD3 deletion to extensive in vivo and in vitro characterization, including detailed stable isotope-resolved metabolic tracing. Here, we show that the loss of PHD3 causes metabolic remodeling in the early stages of metabolic stress by shifting  $\beta$  cell fuel source from glucose to fatty acids. However, as metabolic stress becomes more prolonged, this energetic rewiring impairs glucose-dependent ATP/ADP ratios,  $Ca^{2+}$  fluxes, and insulin secretion.

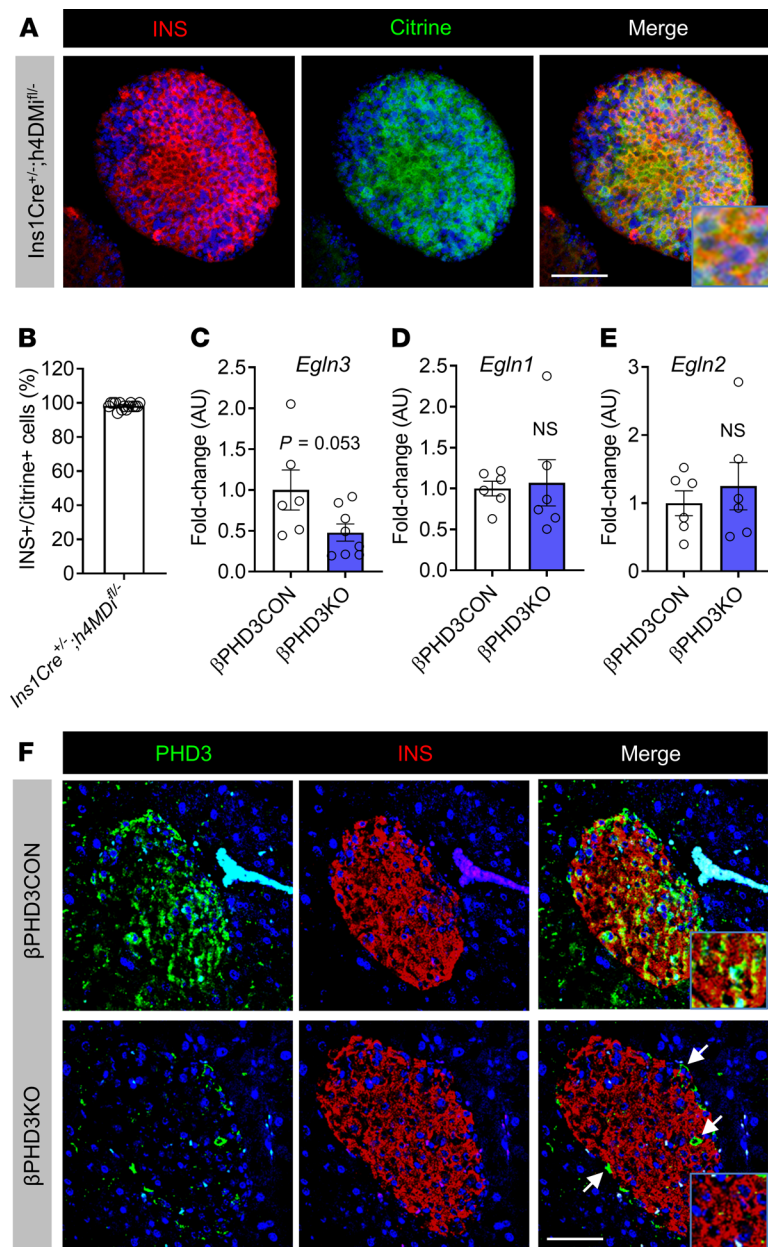
As such, these studies build upon previous findings on PHD1–3 in islets and  $\beta$  cells (27) and show that PHD3 likely constitutes a fundamental mechanism to restrain fatty acid utilization and maintain glucose sensing in  $\beta$  cells during early stages of metabolic stress.

## Results

**Confirmation of  $\beta$  cell-specific PHD3 knockout.** We first generated a model of  $\beta$  cell PHD3 knockout ( $\beta$ PHD3KO) by crossing the *Ins1Cre* deleter strain (33) with animals harboring floxed alleles for *Egln3* (34), which encodes PHD3. Given recently reported issues with allele silencing in some *Ins1Cre* colonies (35), we quantified recombination efficiency of our line using *R26-LSL-hM4Di/mCitrine* animals harboring an mCitrine reporter. Immunostaining of *Ins1Cre<sup>+/-</sup> h4MDi<sup>fl/-</sup>* islets showed *Ins1Cre*-mediated recombination of the floxed allele in almost all insulin-immunopositive cells ( $98.3\% \pm 1.8\%$ , mean  $\pm$  SD; Figure 1, A and B), similar to that reported previously by us and others (33, 36, 37). As expected from this, gene expression analyses showed a 2-fold reduction in *Egln3* expression (Figure 1C), the remainder most likely reflecting the relatively higher levels of *Egln3* detected in  $\alpha$  cells, as shown by RNA-Seq (38, 39). The loss of *Egln3* in  $\beta$ PHD3KO islets was not associated with compensatory changes in the other *Egln* paralogs, *Egln1* and *Egln2* (Figure 1, D and E). IHC analyses showed that whereas PHD3 expression was present throughout control (PHD3CON) islets, it was completely absent from  $\beta$  cells in  $\beta$ PHD3KO mice (Figure 1F). Although *Egln3* is expressed at low abundance in sorted  $\beta$  cells (38, 39), this is likely to be a result of profound reoxygenation after dissociation, thus suppressing *Egln3* expression (40). Together, these data show that PHD3 is expressed in  $\beta$  cells and can be conditionally deleted from this compartment in  $\beta$ PHD3KO animals, thus confirming the validity of the model.

**PHD3 does not contribute to glucose homeostasis under standard diet.** After confirming *Egln3*/PHD3 deletion, we set out to understand the metabolic phenotype of  $\beta$ PHD3KO mice.  $\beta$ PHD3KO mice presented with normal growth curves from 8 to 18 weeks of age compared with  $\beta$ PHD3CON littermates, with no apparent differences in male and female cohorts (Figure 2, A and B). Intraperitoneal glucose tolerance testing (IPGTT) in the same animals showed no abnormalities in glycemia (Figure 2, C and D), which was unchanged up until the age of 20 weeks (Figure 2, E and F). Likewise, oral glucose tolerance, largely determined by incretin release from the intestine (41), was similar in  $\beta$ PHD3CON and  $\beta$ PHD3KO mice (Figure 2, G and H). As expected from the

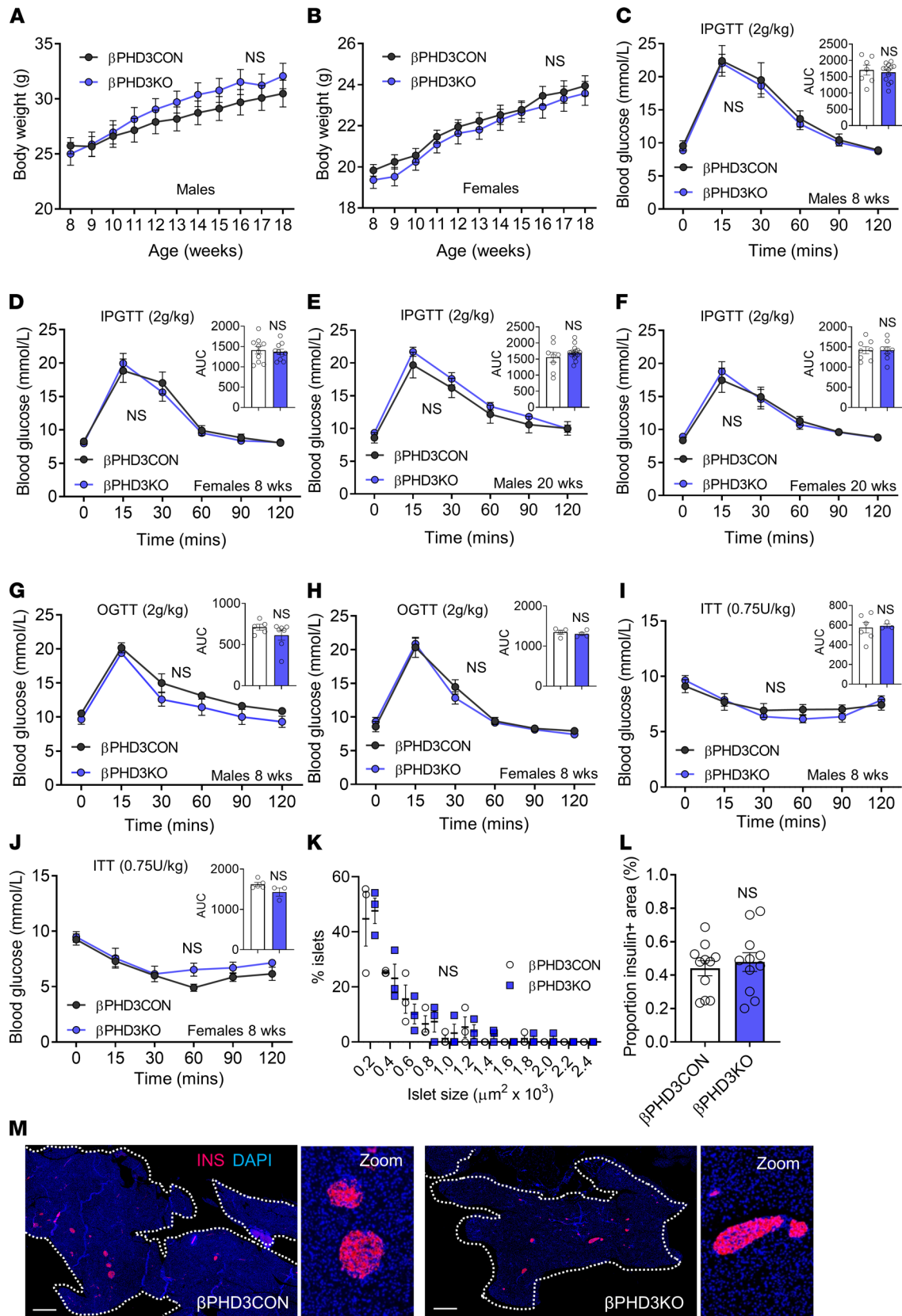




**Figure 1. Generation and validation of mice lacking PHD3 in pancreatic  $\beta$  cells.** (A) Confirmation of recombination efficiency in *Ins1Cre* islets using *R26-LSL-hM4Di/mCitrine* mice expressing an mCitrine reporter (representative image shown, scale bar: 42.5  $\mu$ m; inset is 3.5 $\times$  original magnification). (B) Percentage of insulin-positive (INS<sup>+</sup>) cells expressing mCitrine (i.e., recombined) in *Ins1Cre*<sup>+/+</sup> *h4MDI*<sup>fl/fl</sup> islets ( $n = 15$  islets). (C) *EglN3* expression is reduced in islets of  $\beta$ PHD3KO mice vs.  $\beta$ PHD3CON littermates ( $n = 6$ –8 animals/genotype, unpaired  $t$  test). (D and E) *EglN1* (D) and *EglN2* (E) expression levels are similar in  $\beta$ PHD3CON and  $\beta$ PHD3KO islets ( $n = 6$  animals/genotype, unpaired  $t$  test). (F) PHD3 is detected in the  $\beta$  cell compartment of  $\beta$ PHD3CON but not  $\beta$ PHD3KO islets. Arrows show PHD3 expression in non- $\beta$  cells (representative images shown, scale bar: 42.5  $\mu$ m; inset is 1.75 $\times$  original magnification) ( $n = 3$  animals/genotype). Data shown as mean  $\pm$  SEM. *EglN1/EglN2/EglN3*, *Egl*-9 homolog 1–3 genes; PHD3, prolyl-4-hydroxylase 3.

growth rates and glucose tolerance, both male and female  $\beta$ PHD3KO mice displayed similar insulin sensitivity to their  $\beta$ PHD3CON littermates (Figure 2, I and J). Finally, no differences in islet size distribution (Figure 2K) and  $\beta$  cell mass (Figure 2, L and M) were detected in  $\beta$ PHD3KO versus  $\beta$ PHD3CON mice.

*PHD3* does not influence  $\beta$  cell function in vitro under standard diet. Isolation of islets for more detailed in vitro workup revealed normal expression of the  $\beta$  cell transcription factors *Pdx1*, *Mafa*, and *Nkx6-1* in  $\beta$ PHD3KO islets, suggesting that  $\beta$  cell differentiation was unaffected by the loss of PHD3 (Figure 3A). Further suggestive of mature  $\beta$  cell function, live imaging approaches revealed normal glucose-stimulated  $\text{Ca}^{2+}$



**Figure 2.  $\beta$ PHD3KO in vivo phenotype under standard chow conditions.** (A and B) Male (A) and female (B)  $\beta$ PHD3CON and  $\beta$ PHD3KO mice possess similar adult body weight ( $n = 8$ –10 male and 15 female animals/genotype, 2-way RM ANOVA; Sidak's test). (C and D) No differences in glucose tolerance and AUC are detected between  $\beta$ PHD3CON and  $\beta$ PHD3KO male (C) ( $n = 13$  animals/genotype) and female (D) ( $n = 10$  animals/genotype) 8-week-old mice (2-way RM ANOVA, Sidak's test; AUC: unpaired  $t$  test). (E and F) No differences in glucose tolerance and AUC during IPGTT are detected between  $\beta$ PHD3CON and  $\beta$ PHD3KO male (E) and female (F) 20-week-old mice ( $n = 8$ –16 male and 8 female animals/genotype; 2-way RM ANOVA, Sidak's test; AUC: unpaired  $t$  test). (G and H) Oral glucose tolerance and AUC are also unchanged in  $\beta$ PHD3KO vs.  $\beta$ PHD3CON male (G) and female (H) 8-week-old mice ( $n = 3$ –5 male and 4 female animals/genotype; 2-way RM ANOVA, Sidak's test; AUC: unpaired  $t$  test). (I and J) Insulin sensitivity and AUC are similar in  $\beta$ PHD3CON and  $\beta$ PHD3KO male (I) and female (J) 8-week-old mice ( $n = 6$ –7 male and 4–7 female animals/genotype; 2-way RM ANOVA, Sidak's test; AUC: unpaired  $t$  test). (K–M) Cell resolution reconstruction of entire pancreatic sections shows no differences in islet size and  $\beta$  cell mass between  $\beta$ PHD3CON and  $\beta$ PHD3KO mice. Quantification is shown (K and L), with representative images in M (scale bar: 530  $\mu$ m; 6.5 $\times$  zoom showing maintenance of cellular resolution in a single image), K ( $n = 3$  animals/genotype, 2-way ANOVA; Sidak's test), and L ( $n = 3$  animals/genotype, unpaired  $t$  test). Data shown are mean  $\pm$  SEM. IPGTT, i.p. glucose tolerance test; OGTT, oral glucose tolerance test; ITT, insulin tolerance test.

fluxes (Figure 3, B and C) and ATP/ADP ratios (Figure 3, D and E) in  $\beta$ PHD3KO islets. Suggesting the presence of intact glucagon-like peptide-1 receptor (GLP1R) signaling, an important amplifying input for insulin secretion, cAMP responses to the incretin-mimetic Exendin-4 (Figure 3, F and G) as well as *Glp1r* expression (Figure 3H) were similar in  $\beta$ PHD3CON and  $\beta$ PHD3KO islets. In line with the  $Ca^{2+}$ , ATP/ADP, and cAMP analyses, both glucose-stimulated and Exendin-4-potentiated insulin secretion were similar in islets isolated from male and female  $\beta$ PHD3CON and  $\beta$ PHD3KO animals (Figure 3, I and J).

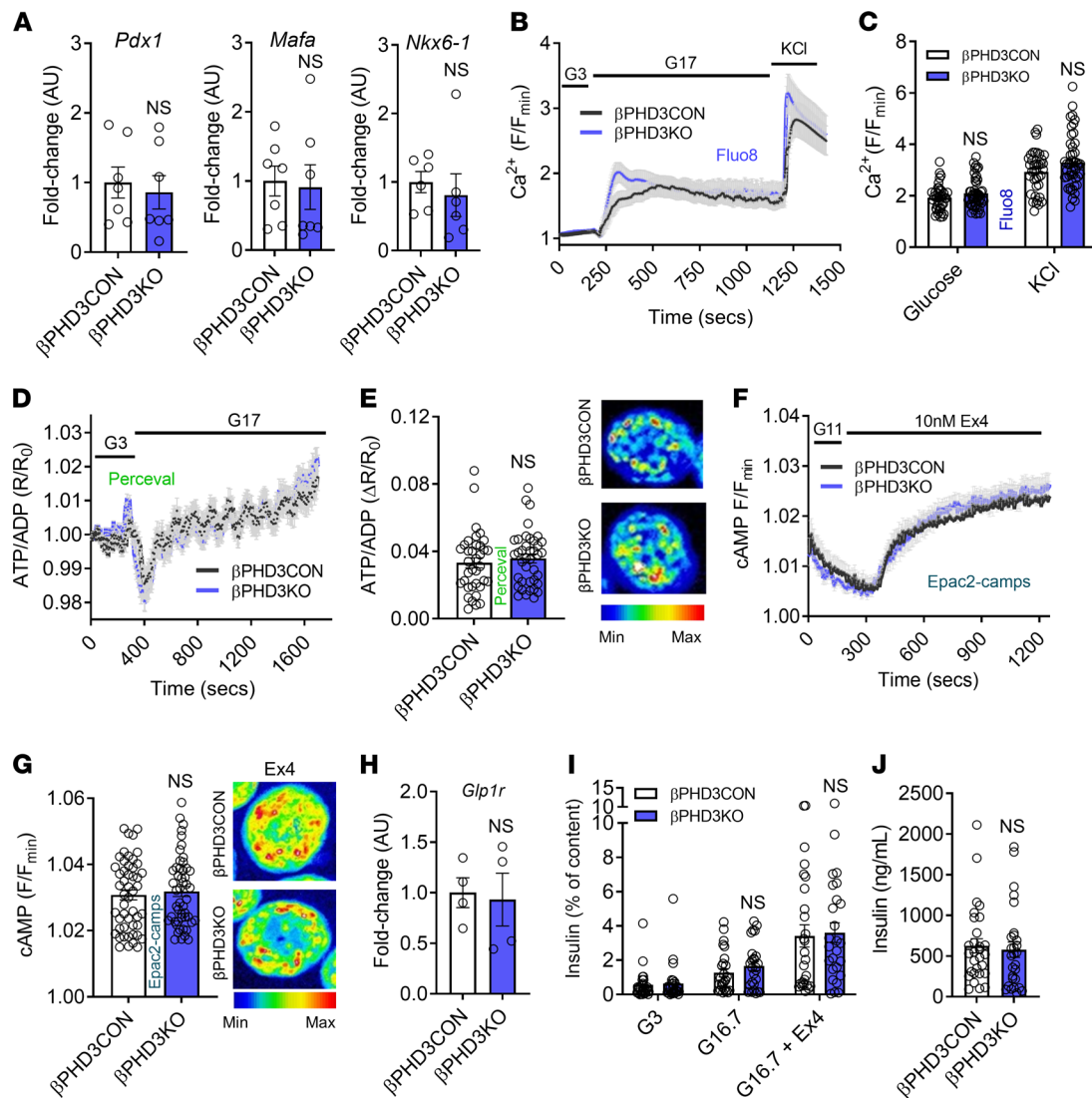
*Loss of PHD3 improves insulin secretion at the onset of metabolic stress.* We next examined whether PHD3 might play a more important role in regulating insulin release during metabolic stress. Therefore, male animals were placed on a high-fat diet (HFD) to induce obesity and metabolic stress (42).

After 4 weeks HFD, *Egln3* was moderately upregulated in  $\beta$ PHD3CON islets (Figure 4A), although this was not significant. However, *Egln3* levels remained suppressed in  $\beta$ PHD3KO islets (Figure 4A). GTT revealed significantly impaired glucose homeostasis in  $\beta$ PHD3KO mice after 4 weeks HFD feeding but not after 72 hours HFD feeding (Figure 4, B and C), despite similar body weight gain compared with  $\beta$ PHD3CON littermates (Figure 4D). The 72-hour time point was used to differentiate the effects of early and prolonged fatty acid incorporation/utilization. As expected, fasting blood glucose levels were elevated in  $\beta$ PHD3CON mice after 4 weeks HFD (Figure 4C). There was no effect of *Cre* or floxed alleles per se on the metabolic phenotype after 4 weeks HFD, with *Ins1<sup>wt/wt</sup> Egln3 <sup>$\beta/\beta$</sup>* , *Ins1Cre<sup>+/-</sup> Egln3<sup>wt/wt</sup>*, and *Ins1<sup>wt/wt</sup> Egln3<sup>wt/wt</sup>* controls being indistinguishable (Figure 4E). After 4 weeks HFD, IPGTT showed no difference in the serum insulin levels between  $\beta$ PHD3CON and  $\beta$ PHD3KO mice under fasting and glucose-stimulated conditions (Figure 4F). However,  $\beta$ PHD3KO mice mounted earlier and larger magnitude insulin secretory responses to glucose bolus, as shown by the stimulation index (Figure 4G). Islets isolated from the same animals secreted significantly more insulin in glucose-stimulated and Exendin-4-potentiated states (Figure 4H), and insulin content was similar to  $\beta$ PHD3CON littermates (Figure 4I). Finally, 4 weeks of HFD feeding had no effect on glucose tolerance during oral GTT (OGTT; Figure 4J), body composition (Figure 4K), and insulin sensitivity (Figure 4L) in  $\beta$ PHD3KO mice versus  $\beta$ PHD3CON littermates.

Thus,  $\beta$ PHD3KO mice were glucose intolerant on an HFD, showed improved insulin secretion, and were able to release a greater fraction of their insulin granules (i.e., were more sensitized to exocytosis). These data raise the possibility that nutrient-sensing and utilization might have been altered in  $\beta$ PHD3KO islets.

*PHD3 maintains glycolysis and pyruvate management in  $\beta$  cells.* Given the reported roles of PHD3 in glycolysis, we wondered whether the changes in  $\beta$  cell function observed during the early phases of HFD feeding in  $\beta$ PHD3KO mice might be associated with changes in glucose metabolism. We first looked at glycolytic fluxes using  $^{14}C$  glucose. Although glucose oxidation was not altered at low or high glucose in islets from  $\beta$ PHD3KO mice after 4 weeks HFD feeding (Figure 5A), there was a small but significant decrease in  $^{14}C$  content in the aqueous phase, indicating a net reduction in TCA cycle/other metabolites derived from glycolysis (Figure 5B). Notably, a 2-fold reduction in the incorporation of glucose into the lipid pool (i.e., glucose-driven lipogenesis) was also detected in  $\beta$ PHD3KO islets after 4 weeks HFD (Figure 5C), suggestive of a decreased oxidative pyruvate entry into the TCA cycle and lipogenic acetyl-CoA (43).

To gain a higher resolution analysis of glucose fate, stable isotope-resolved tracing was performed in  $\beta$ PHD3KO islets using  $^{13}C_6$ -[U]-glucose. The schematic in Figure 5D depicts the fate of  $^{13}C$  from  $^{13}C_6$ -[U]-glucose in  $\beta$ PHD3CON and  $\beta$ PHD3KO islets, as assessed by gas chromatography–mass spectrometry (GC-MS). Analysis of mass isotopomer distribution showed no differences in  $^{13}C$  incorporation into aspartate, glutamate, malate, fumarate, or citrate in  $\beta$ PHD3CON and  $\beta$ PHD3KO islets on either standard

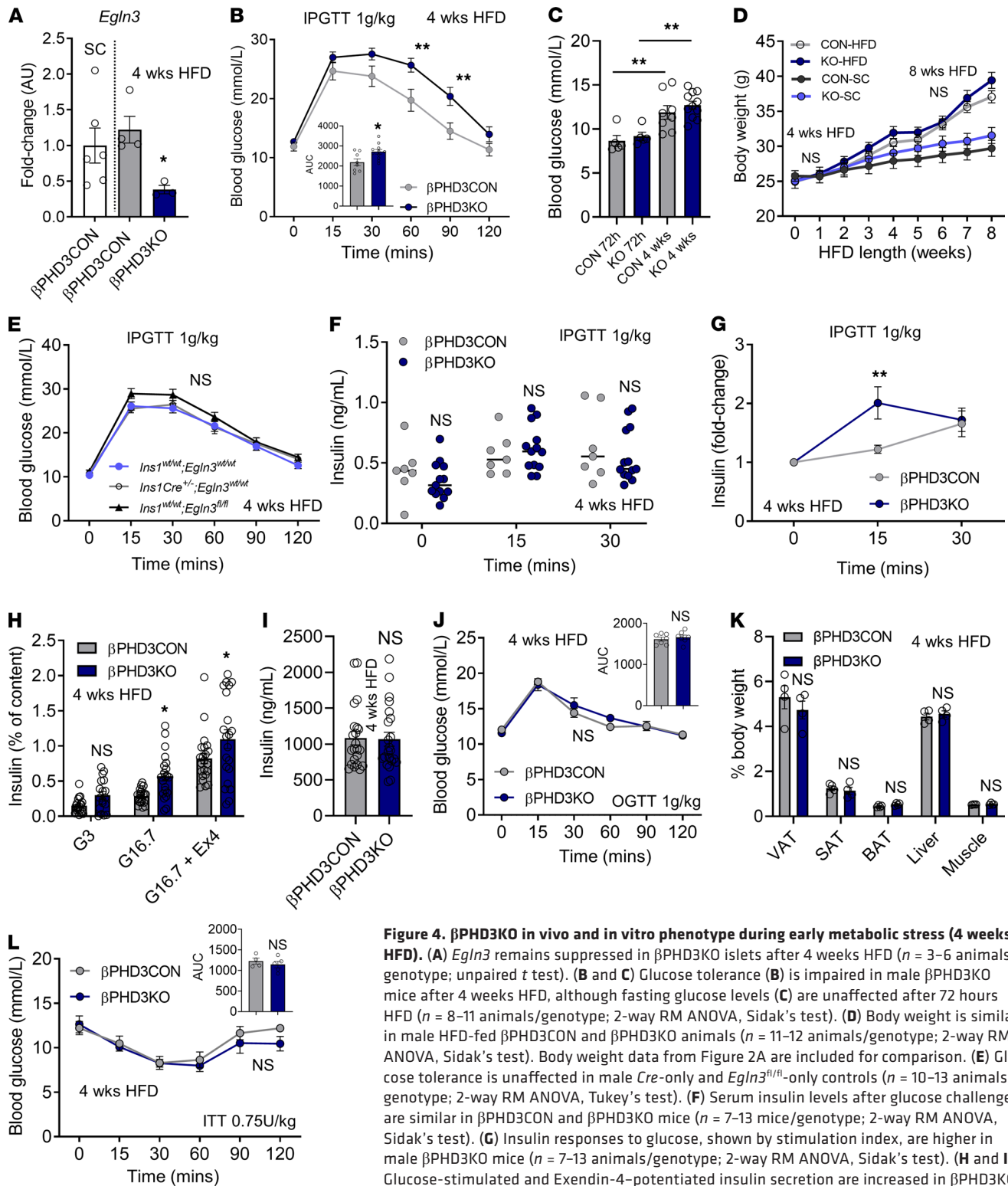


**Figure 3. βPHD3KO in vitro phenotype under standard chow conditions.** (A) The expression of the β cell-specific markers *Pdx1*, *Mafa*, and *Nkx6-1* is similar in βPHD3CON and βPHD3KO islets ( $n = 6-7$  animals/genotype, unpaired  $t$  test). (B and C) Glucose- and KCl-stimulated  $Ca^{2+}$  rises do not differ in islets of βPHD3CON and βPHD3KO mice, shown by mean traces (B) and summary bar graph (C) ( $n = 38-48$  islets, 4-5 animals/genotype; 2-way ANOVA, Sidak's test). (D and E) Glucose-stimulated ATP/ADP rises are similar in βPHD3CON and βPHD3KO islets, shown by mean traces (D) and summary bar graph (E) (representative images shown; a single islet has been cropped for clarity;  $n = 36-39$  islets, 4-5 animals/genotype, unpaired  $t$  test). (F and G) cAMP responses to Ex4 do not differ between βPHD3CON and βPHD3KO islets, shown by mean traces (F) and summary bar graph (G) (representative images shown; a single islet has been cropped for clarity;  $n = 50$  islets, 4-5 animals/genotype, unpaired  $t$  test). (H) *Glp1r* expression is similar in βPHD3CON and βPHD3KO islets ( $n = 4$  animals/genotype, unpaired  $t$  test). (I) Insulin secretory responses to glucose and Exendin-4 show no differences between βPHD3CON and βPHD3KO islets ( $n = 29$  replicates, 6 animals/genotype, 2-way ANOVA; Sidak's test). (J) Total insulin content also remained similar between βPHD3CON and βPHD3KO islets ( $n = 29$  replicates, 6 animals/genotype; unpaired  $t$  test). Data shown as mean  $\pm$  SEM. G3, 3 mM glucose; G16.7, 16.7 mM glucose; G17, 17 mM glucose.

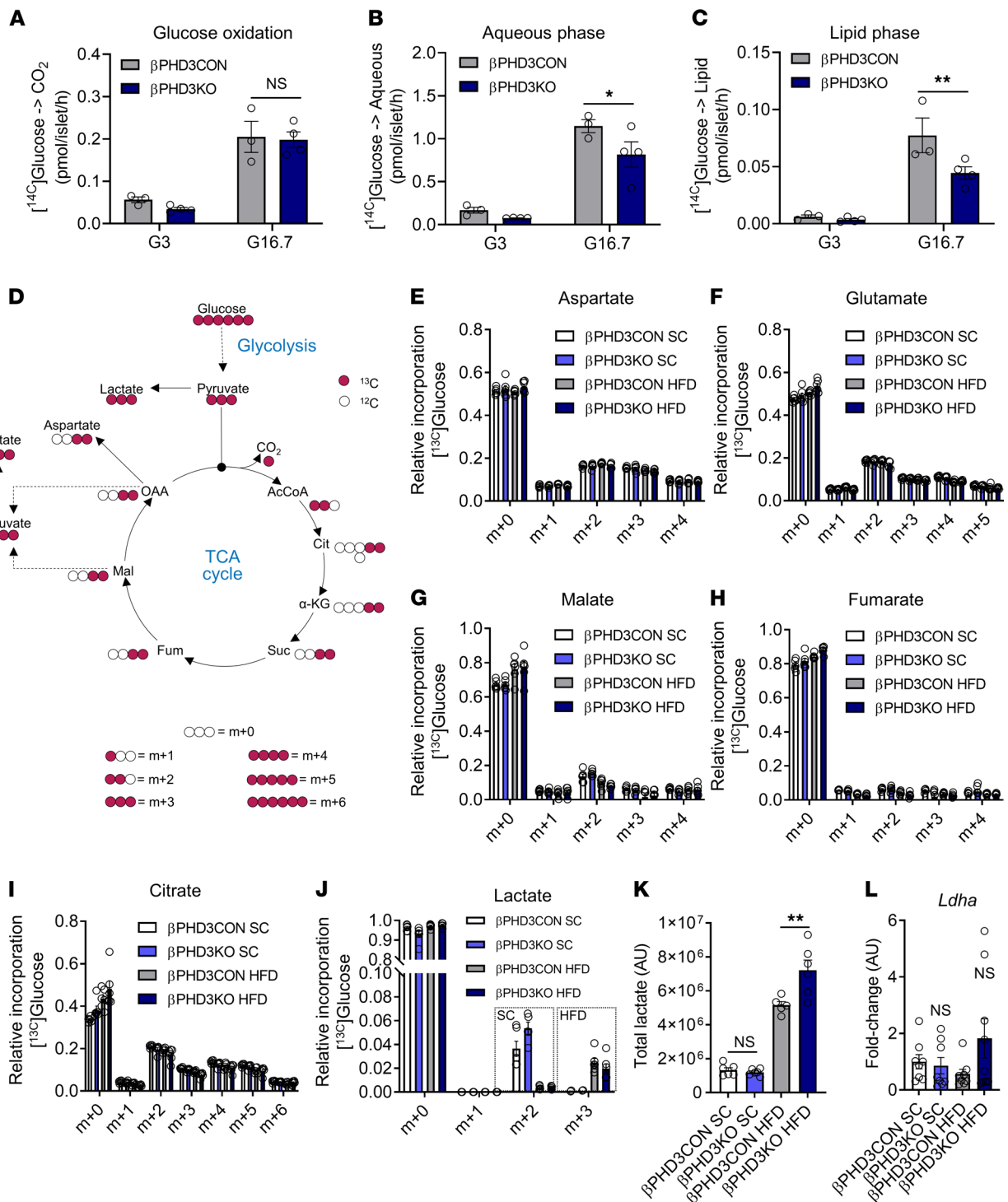
chow (SC) or 4 weeks HFD (Figure 5, E-I). Thus, although the contribution of glucose to aqueous cellular metabolite pools was clearly reduced in βPHD3KO islets after 4 weeks HFD (Figure 5B), there was no net change in the incorporation of  $^{13}C$  from glucose into each metabolite, i.e., the TCA cycle proceeded normally despite lowered glucose fluxes. Islets from animals fed SC showed m+2 lactate accumulation (Figure 5J), which is consistent with lactate normally produced as a result of oxidative metabolism of glucose-derived pyruvate. However, during HFD there was a pronounced switch to reduction of pyruvate to lactate (indicated by the m+3 isotopomer) in both genotypes (Figure 5J).

Further analysis of steady-state lactate levels showed a significant increase in lactate production in islets from HFD-fed βPHD3KO versus βPHD3CON mice (Figure 5K). Together with the m+2  $\rightarrow$  m+3 switch, this finding supports initial measures with  $^{14}C$  glucose indicating reduced fueling of the





**Figure 4.  $\beta$ PHD3KO in vivo and in vitro phenotype during early metabolic stress (4 weeks HFD).** (A) *EglN3* remains suppressed in  $\beta$ PHD3KO islets after 4 weeks HFD ( $n = 3-6$  animals/genotype; unpaired  $t$  test). (B and C) Glucose tolerance (B) is impaired in male  $\beta$ PHD3KO mice after 4 weeks HFD, although fasting glucose levels (C) are unaffected after 72 hours HFD ( $n = 8-11$  animals/genotype; 2-way RM ANOVA, Sidak's test). (D) Body weight is similar in male HFD-fed  $\beta$ PHD3CON and  $\beta$ PHD3KO animals ( $n = 11-12$  animals/genotype; 2-way RM ANOVA, Sidak's test). Body weight data from Figure 2A are included for comparison. (E) Glucose tolerance is unaffected in male *Cre*-only and *EglN3<sup>fl/fl</sup>*-only controls ( $n = 10-13$  animals/genotype; 2-way RM ANOVA, Tukey's test). (F) Serum insulin levels after glucose challenge are similar in  $\beta$ PHD3CON and  $\beta$ PHD3KO mice ( $n = 7-13$  mice/genotype; 2-way RM ANOVA, Sidak's test). (G) Insulin responses to glucose, shown by stimulation index, are higher in male  $\beta$ PHD3KO mice ( $n = 7-13$  animals/genotype; 2-way RM ANOVA, Sidak's test). (H and I) Glucose-stimulated and Exendin-4-potentiated insulin secretion are increased in  $\beta$ PHD3KO islets (H) ( $n = 20$  replicates, 4 animals/genotype; 2-way ANOVA, Sidak's test), whereas insulin content (I) remains unchanged ( $n = 20$  replicates, 4 animals/genotype; unpaired  $t$  test). (J)  $\beta$ PHD3CON and  $\beta$ PHD3KO mice show similar oral glucose tolerance ( $n = 7$  animals/genotype; 2-way RM ANOVA, Sidak's test). (K) No changes in body composition are seen in  $\beta$ PHD3KO vs.  $\beta$ PHD3CON mice ( $n = 4$  animals/genotype; 2-way ANOVA, Sidak's test). (L) Insulin sensitivity remains unchanged in  $\beta$ PHD3KO mice ( $n = 4-5$  animals/genotype; 2-way RM ANOVA, Sidak's test). Data shown as mean  $\pm$  SEM. \* $P < 0.05$ , \*\* $P < 0.01$ , and NS. VAT/SAT/BAT, visceral/subcutaneous/brown adipose tissue; SC, standard chow; HFD, high-fat diet; IPGTT, i.p. glucose tolerance test.



**Figure 5. Metabolic rewiring in  $\beta\text{PHD3KO}$  islets during metabolic stress.** (A–C)  $\beta\text{PHD3KO}$  islets possess intact glucose oxidation (A) but have an impaired accumulation of glycolytic/TCA cycle metabolites (B) and glucose-driven lipogenesis (C) after 4 weeks of HFD ( $n = 3$  islet preparations, 3 animals/genotype; 2-way ANOVA, Benjamini-Krieger-Yekutieli 2-stage procedure). (D) Schematic showing  $^{13}\text{C}$  from  $^{13}\text{C}_6$ -[U]-glucose incorporation into metabolites in  $\beta\text{PHD3CON}$  and  $\beta\text{PHD3KO}$  islets. (E–I) Mass isotopomer distributions (MID) showing that  $^{13}\text{C}$  incorporation from glucose into aspartate (E), glutamate (F), malate (G), fumarate (H), or citrate (I) is similar in SC and HFD  $\beta\text{PHD3CON}$  and  $\beta\text{PHD3KO}$  islets from animals on either SC or 4 weeks HFD ( $n = 6$  islet preparations, 3 animals/genotype, 2-way ANOVA, Tukey’s test). (J)  $^{13}\text{C}$  from  $^{13}\text{C}_6$ -[U]-glucose is incorporated primarily into m+2 lactate in SC  $\beta\text{PHD3CON}$  and  $\beta\text{PHD3KO}$  islets, whereas a shift to m+3 lactate is seen during 4 weeks HFD feeding ( $n = 6$  islet preparations, 3 animals/genotype; 2-way ANOVA, Tukey’s test). (K) Steady-state lactate levels are increased in  $\beta\text{PHD3KO}$  vs.  $\beta\text{PHD3CON}$  islets after 4 weeks HFD ( $n = 6$  islet preparations,  $n = 3$  animals/genotype; 1-way ANOVA, Sidak’s test). (L) *Ldha* expression is not significantly different in  $\beta\text{PHD3CON}$  and  $\beta\text{PHD3KO}$  islets from animals on either SC or HFD ( $n = 8$ –9 animals/genotype; Dunnett’s test). Data shown as mean  $\pm$  SEM. \* $P < 0.05$ , \*\* $P < 0.01$ , and NS. SC, standard chow; HFD, high-fat diet.



TCA cycle by glycolysis (Figure 5B). Furthermore, the tracing data suggest that  $\beta$ PHD3KO islets after 4 weeks HFD increased the reduction of pyruvate  $\rightarrow$  lactate to support continued glycolysis through regeneration of the cytosolic  $\text{NAD}^+$  pool. Although the expression of the “disallowed gene” *Ldha* (31, 32) tended to be increased, this was variable and not significantly different between  $\beta$ PHD3CON and  $\beta$ PHD3KO islets (Figure 5L).

Together, these data suggest that metabolic stress induced defects in the management of pyruvate fate in  $\beta$ PHD3KO islets, implying that insulin secretion in vitro must be maintained and even amplified through mechanisms other than glycolysis.

*PHD3 suppresses fatty acid use under metabolic stress.* We hypothesized that  $\beta$ PHD3KO islets might switch to an alternative energy source to sustain their function, namely,  $\beta$ -oxidation of fatty acids, which are present in excess during HFD feeding. Moreover, in cancer cells, PHD3 has been shown to increase activity of ACC2, which converts acetyl-CoA  $\rightarrow$  malonyl-CoA, the latter suppressing carnitine palmitoyltransferase I (CPT1), the rate-limiting step in fatty acid oxidation (24, 44). Indicating a profound change in  $\beta$  cell nutrient preference, supplementation of the culture medium with the fatty acid palmitate for 48–72 hours augmented glucose-stimulated and Extendin-4-potentiated insulin secretion in  $\beta$ PHD3KO islets after 4 weeks HFD (Figure 6A). By contrast,  $\beta$ PHD3CON islets after 4 weeks HFD showed no changes in glucose-stimulated insulin release after culture with palmitate (Figure 6B), confirming that the fatty acid was unlikely to induce lipotoxicity at the concentration and timing used here. Interestingly, 48–72 hours incubation with palmitate increased Extendin-4-potentiated insulin secretion in  $\beta$ PHD3CON islets after 4 weeks HFD (Figure 6B).

Providing evidence for increased CPT1 activity in  $\beta$ PHD3KO islets after 4 weeks HFD, the CPT1a inhibitor etomoxir was able to augment ATP/ADP responses to glucose in these islets (Figure 6C), despite unchanged mRNA levels of *Cpt1a* (Figure 6D). In line with this finding, culture with low palmitate concentration decreased glucose-stimulated  $\text{Ca}^{2+}$  fluxes in  $\beta$ PHD3KO but not in  $\beta$ PHD3CON islets after 4 weeks HFD (Figure 6, E and F), presumably due to an increased flux of fatty acid-derived acetyl-CoA into the TCA cycle. Although glucose-driven  $\text{Ca}^{2+}$  fluxes were apparently normal in  $\beta$ PHD3KO islets after 4 weeks HFD, this was likely due to an increased sensitivity of voltage-dependent  $\text{Ca}^{2+}$  channel to membrane depolarization, because responses to KCl were significantly elevated (Figure 6, G and H).

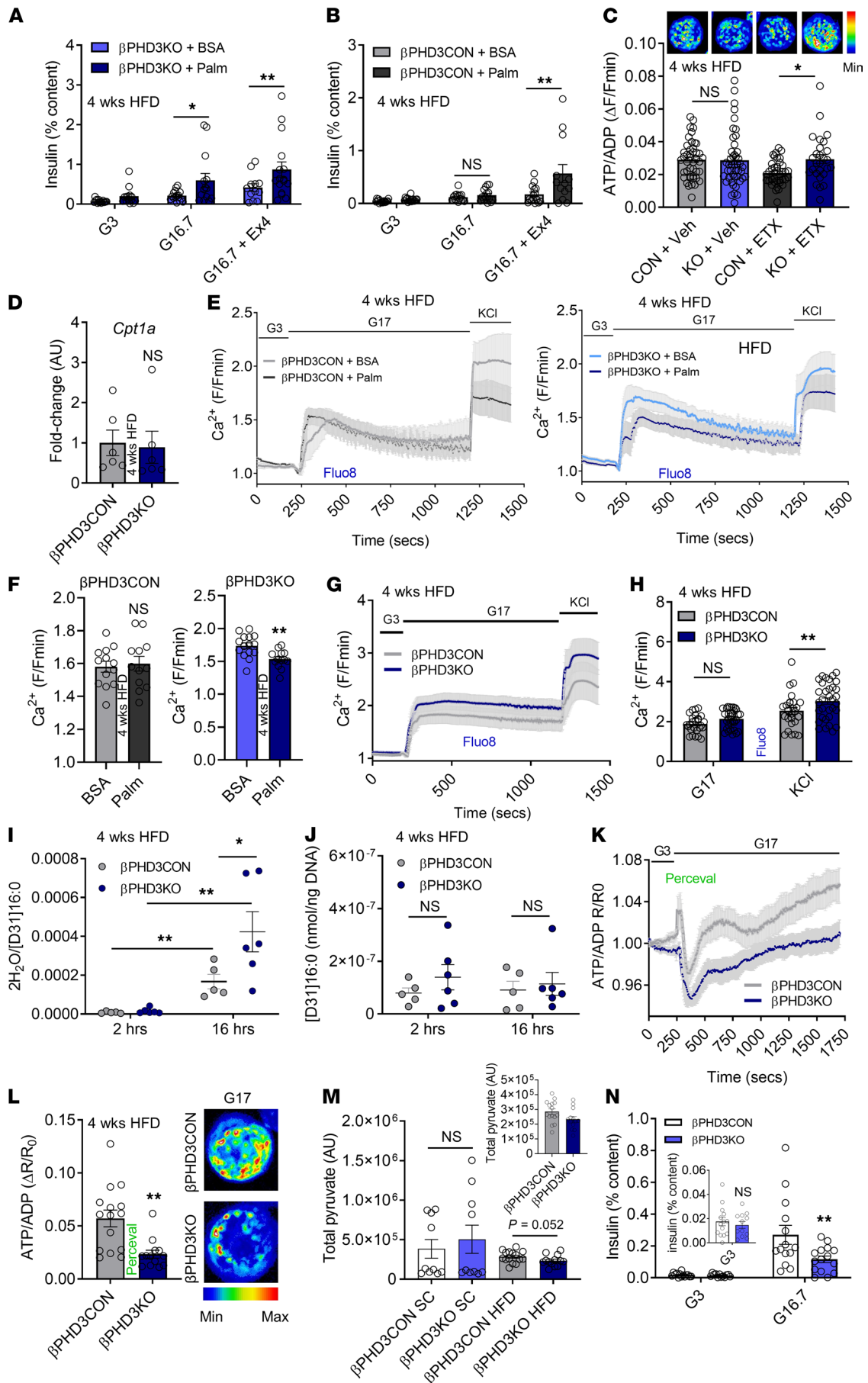
To gain a higher resolution view of fatty acid fate, we incubated 4 weeks HFD  $\beta$ PHD3CON and  $\beta$ PHD3KO islets with D31-palmitate, before measuring the intracellular D31-palmitate concentration and  $2\text{H}_2\text{O}$  released from fatty acid oxidation. With this assay, the ratio of  $2\text{H}_2\text{O}$  to intracellular D31-palmitate provides a measure of fatty acid oxidation while accounting for any differences between tracer uptake/turnover. Confirming the accuracy of the assay,  $2\text{H}_2\text{O}/\text{D31-palmitate}$  values were robustly increased after 16 hours versus 2 hours incubation with tracer (Figure 6I). Notably, after 4 weeks HFD,  $2\text{H}_2\text{O}/\text{D31-palmitate}$  values were significantly higher in  $\beta$ PHD3KO versus  $\beta$ PHD3CON islets at the 16-hour time point (Figure 6I), indicative of higher fatty acid oxidation rates. The uptake of tracer was similar in  $\beta$ PHD3KO versus  $\beta$ PHD3CON islets (Figure 6J).

Taken together, these data strongly suggest that PHD3 loss led to alterations in fatty acid utilization in islets.

*Loss of PHD3 decreases dependency on glucose as a fuel source.* We wondered whether increased fatty acid utilization in  $\beta$ PHD3KO islets after 4 weeks HFD was associated with a decreased dependency on glucose as a primary fuel source. Confirming a switch away from glycolysis, glucose-stimulated ATP/ADP ratios were markedly decreased in  $\beta$ PHD3KO islets after 4 weeks HFD (Figure 6, K and L), despite the apparent increases in insulin secretion (Figure 6A). Moreover, steady-state pyruvate levels were decreased in  $\beta$ PHD3KO islets after 4 weeks HFD (Figure 6M). Last, glucose-stimulated insulin secretion (GSIS) was impaired in SC  $\beta$ PHD3KO islets that were starved of glucose (3 mM) for 3 hours prior to challenge (Figure 6N), presumably due to dysregulated use of alternative fuel sources, which then inhibit critical metabolic hubs in central carbon metabolism, such as pyruvate dehydrogenase. These data confirm the presence of defective pyruvate handling and suggest that  $\beta$ PHD3KO islets alter pyruvate production and/or increase pyruvate  $\rightarrow$  lactate conversion to maintain redox balance during HFD.

Thus, after 4 weeks HFD,  $\beta$ PHD3KO islets became less reliant on glycolysis to fuel ATP/ADP production, were able to sustain oxidative phosphorylation through fatty acid use, and secreted more insulin when both glucose and fatty acids were present.

*Regulated gene expression of ACC1 and ACC2 in  $\beta$  cells.* Previous studies have shown that PHD3 maintains glucose metabolism by hydroxylating and activating ACC2 (encoded by *Acacb*), which inhibits CPT1



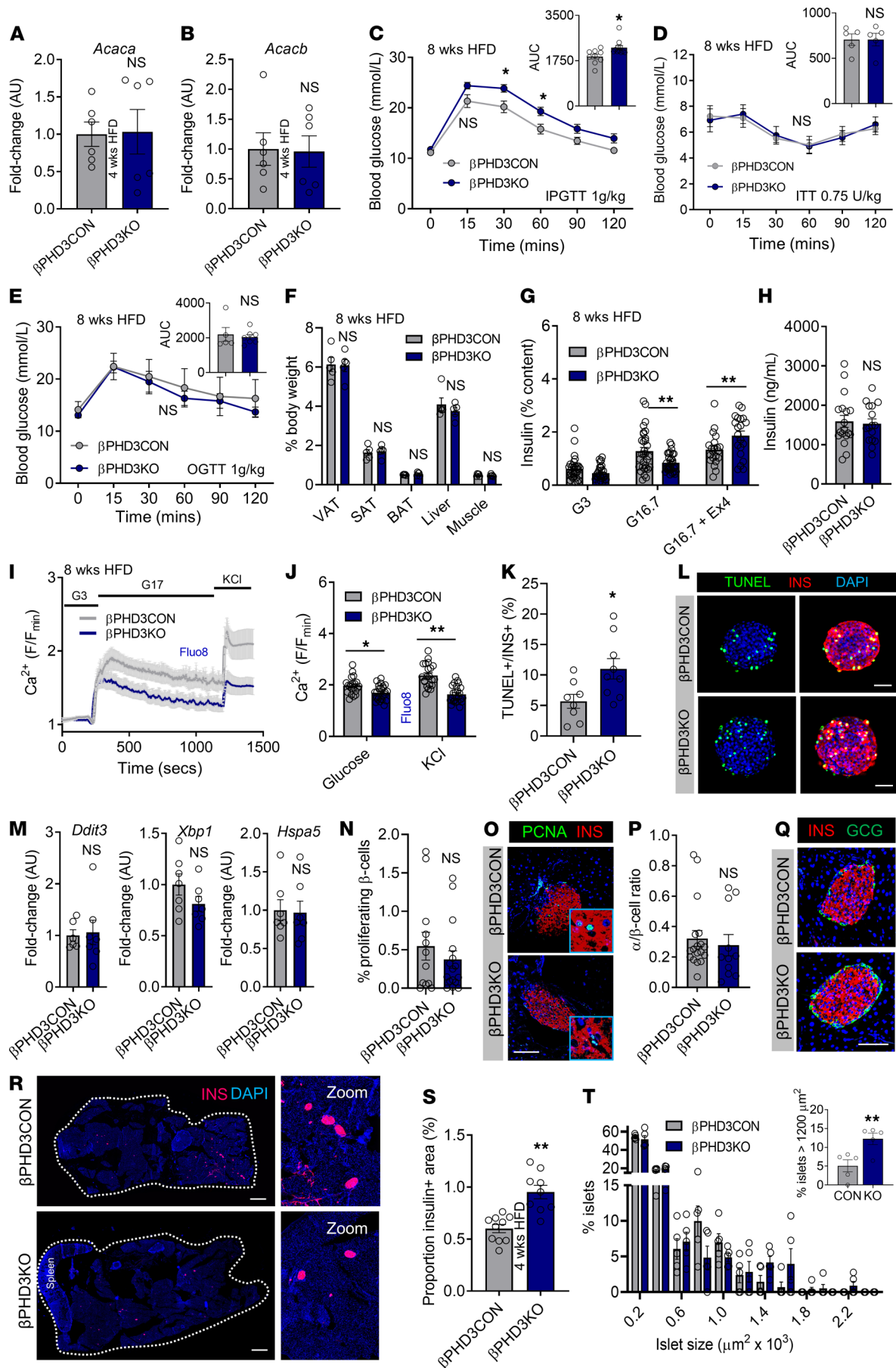
**Figure 6. Nutrient preference is altered in  $\beta$ PHD3KO islets during early metabolic stress (4 weeks HFD).** (A) Palmitate (Palm) enhances glucose-stimulated and Exendin-4-stimulated insulin secretion in  $\beta$ PHD3KO islets ( $n = 12$ – $17$  replicates, 7–9 animals/genotype; 2-way ANOVA, Benjamini-Krieger-Yekutieli 2-stage procedure). (B) Same as for A but showing glucose and Exendin-4 response in  $\beta$ PHD3CON islets ( $n = 13$ – $17$  replicates, 7–9 animals/genotype; 2-way ANOVA, Benjamini-Krieger-Yekutieli 2-stage procedure). (C) Etomoxir (ETX) increases glucose-stimulated ATP/ADP ratio in  $\beta$ PHD3KO islets (representative images show a single islet;  $n = 27$ – $45$  islets, 5–6 animals/genotype; 2-way ANOVA, Sidak's test). (D) *Cpt1a* expression is similar in  $\beta$ PHD3CON and  $\beta$ PHD3KO islets ( $n = 6$  animals/genotype; unpaired *t* test). (E and F) Palmitate impairs  $\text{Ca}^{2+}$  responses to glucose in  $\beta$ PHD3KO islets, shown by mean traces (E) and bar graphs (F) ( $n = 13$ – $15$  islets, 2–3 animals/genotype, unpaired *t* test). (G and H) Glucose-stimulated and KCl-stimulated  $\text{Ca}^{2+}$  rises are similar to controls (glucose), or increased (KCl), in  $\beta$ PHD3KO islets, shown by mean traces (G) and a bar graph (H) ( $n = 26$ – $33$  islets, 6 animals/genotype; 2-way ANOVA, Sidak's test). (I) The  $2\text{H}_2\text{O}/\text{D}_31$ -palmitate ratio is increased in  $\beta$ PHD3KO islets after 16 hours ( $n = 5$ – $6$  animals/genotype; within genotype: unpaired *t* test; between genotype: 2-way ANOVA, Sidak's test). (J)  $\text{D}_31$ -palmitate tracer uptake is similar in  $\beta$ PHD3CON and  $\beta$ PHD3KO islets ( $n = 5$ – $6$  animals/genotype; 2-way ANOVA, Sidak's test). (K and L) ATP/ADP rises are impaired in  $\beta$ PHD3KO islets, shown by mean traces (K) and bar graph and representative images (L) (single islet shown;  $n = 13$ – $15$  islets, 4 animals/genotype, unpaired *t* test). (M) Steady-state pyruvate levels are decreased in  $\beta$ PHD3KO islets ( $n = 11$ – $13$  replicates, 5–8 animals/genotype; Mann-Whitney *U* test). (N) Low glucose preincubation decreases glucose-stimulated insulin secretion in  $\beta$ PHD3KO islets from animals on SC ( $n = 14$ – $15$  replicates, 6 animals/genotype; 2-way ANOVA, Sidak's test). Data shown are mean  $\pm$  SEM. \* $P < 0.05$ , \*\* $P < 0.01$ , and NS, SC, standard chow; HFD, high-fat diet.

through generation of mitochondrial malonyl-CoA, thus suppressing use of fatty acids via  $\beta$ -oxidation (45, 46). However,  $\beta$  cells are thought to predominantly express ACC1 (encoded by *Acaca*; refs. 45, 46), which supplies cytosolic malonyl-CoA to fatty acid synthase for de novo lipid biosynthesis rather than for  $\beta$ -oxidation (43). Therefore, we sought to determine whether it was possible for PHD3 to act via ACC2 in pancreatic  $\beta$  cells. We reexamined the expression of *ACACB* in pancreatic  $\beta$  cells in multiple well-powered human bulk islet and purified  $\beta$  cell gene expression data sets (38, 47, 48). *ACACB* mRNA was found to be present in  $\beta$  cells, albeit at much lower levels than *ACACA* mRNA (Supplemental Figure 1A). Our data suggest that the presence of *ACACB* mRNA in  $\beta$  cells was not artifactual: first, the mRNA levels of *ACACB* were comparable to the  $\beta$  cell transcription factor *HNF1A*, suggesting ample gene expression levels compatible with function (Supplemental Figure 1A). Second, the *ACACB* gene promoter was bound by islet and  $\beta$  cell-specific transcription factors, suggesting that *ACACB* is a bona fide  $\beta$  cell gene under the regulation of cell-specific transcription factors (Supplemental Figure 1B). Our findings thus suggest that as long as protein translation occurs, PHD3 could have maintained glucose metabolism in pancreatic  $\beta$  cells via hydroxylation of ACC2. We next examined if *ACACB* gene expression is under the regulation of PHD3 protein. Gene expression levels of *Acaca* and *Acacb* were similar in  $\beta$ PHD3CON and  $\beta$ PHD3KO islets after 4 weeks HFD (Figure 7, A and B), suggesting that *Acacb* mRNA levels were not regulated by PHD3 activity.

Thus, *ACACB* is present in  $\beta$  cells, and contains promoter regions regulated by  $\beta$  cell-specific transcription factors, but does not depend upon PHD3 for expression. These data are consistent with a scenario whereby PHD3 hydroxylates ACC2 without influencing mRNA expression.

*PHD3 protects against insulin secretory failure during prolonged metabolic stress.* Last, we sought to understand the phenotype of  $\beta$ PHD3KO mice when faced with continued fatty acid/nutrient abundance. Glucose intolerance was still present in  $\beta$ PHD3KO mice after 8 weeks on an HFD (Figure 7C) although less severe than after 4 weeks HFD, suggesting that metabolic rewiring might, in fact, have been protective against prolonged exposure to excess fatty acids in vivo. As was the case after 4 weeks HFD,  $\beta$ PHD3KO mice showed similar insulin sensitivity to  $\beta$ PHD3CON after 8 weeks HFD (Figure 7D). In contrast to the IPGTT data, oral glucose tolerance was preserved at this time point in  $\beta$ PHD3KO mice, suggesting an intact incretin action (Figure 7E). Furthermore, after 8 weeks HFD, the body composition of  $\beta$ PHD3KO mice was similar to  $\beta$ PHD3CON (Figure 7F). By this point, however, impaired glucose-stimulated insulin secretion (Figure 7G) was apparent in isolated  $\beta$ PHD3KO islets. This secretory deficit could be rescued by application of Exendin-4 to sensitize insulin granules to exocytosis (Figure 7, G and H), as expected from the oral glucose testing results. In addition, after 8 weeks HFD, the amplitude of glucose-stimulated  $\text{Ca}^{2+}$  rises was significantly reduced in  $\beta$ PHD3KO compared with  $\beta$ PHD3CON islets (Figure 7, I and J).

Suggesting that profound defects in voltage-dependent  $\text{Ca}^{2+}$  channels might also be present, responses to the generic depolarizing stimulus KCl were markedly blunted in the same islets (Figure 7, I and J). Although apoptosis was increased in  $\beta$ PHD3KO islets after 8 weeks HFD (Figure 7, K and L), this did not reflect a (detectable) lipotoxic ER stress response because *Ddit3*, *Hspa5*, and *Xbp1* (Figure 7M) expression remained unchanged. Moreover, after 8 weeks HFD, proliferating cell nuclear antigen (PCNA) staining (Figure 7, N and O) and the  $\alpha$  cell/ $\beta$  cell ratio (Figure 7, P and Q) were similar in  $\beta$ PHD3CON and  $\beta$ PHD3KO islets, suggesting that  $\beta$  cells were unlikely to be less/more proliferative or adopting  $\alpha$  cell features (or vice versa). Nonetheless, a profound 2-fold increase in  $\beta$  cell mass was observed in  $\beta$ PHD3KO mice after 8 weeks HFD (Figure 7, R and S), with a significant increase in the proportion of larger islets (Figure 7T), implying that





**Figure 7. Prolonged metabolic stress (8 weeks HFD) leads to insulin secretory failure in  $\beta$ PHD3KO islets.** (A and B) *Acaca* (A) and *Acacb* (B) expression is similar in  $\beta$ PHD3CON and  $\beta$ PHD3KO islets from animals fed 4 weeks HFD ( $n = 6$  animals/genotype; unpaired  $t$  test). (C) Glucose tolerance remains impaired in  $\beta$ PHD3KO mice after 8 weeks HFD feeding ( $n = 9$ –11 animals/genotype; 2-way RM ANOVA, Sidak's test; AUC: unpaired  $t$  test). (D) Insulin sensitivity is unchanged in  $\beta$ PHD3KO mice ( $n = 5$  animals/genotype, 2-way RM ANOVA; Sidak's test; AUC: unpaired  $t$  test). (E) Oral glucose tolerance is normal in  $\beta$ PHD3KO mice ( $n = 6$ –7 animals/genotype; 2-way RM ANOVA, Sidak's test; AUC: unpaired  $t$  test). (F) Body composition is unchanged in  $\beta$ PHD3KO mice ( $n = 5$  animals/genotype; 2-way ANOVA, Sidak's test). (G and H) Glucose-stimulated insulin secretion (G) is impaired in  $\beta$ PHD3KO islets after 8 weeks HFD ( $n = 29$ –32 replicates, 4 animals/genotype; 2-way ANOVA, Sidak's test), despite similar insulin content (H) (16–18 replicates, 4 animals/genotype; unpaired  $t$  test). (I and J) Glucose-stimulated and KCl-stimulated  $Ca^{2+}$  rises are impaired in  $\beta$ PHD3KO islets, shown by mean traces (I) and quantification (J) ( $n = 21$ –24 islets/genotype, 2 animals/genotype; 2-way ANOVA, Sidak's test). (K and L) Apoptosis is increased in  $\beta$ PHD3KO islets, shown by quantification (K) and representative images (L) ( $n = 8$ –9 islets/genotype; unpaired  $t$  test). (M) *Ddit3*, *Xbp1*, and *Hspa5* expression shows no changes in  $\beta$ PHD3KO islets ( $n = 6$ –7 animals/genotype; unpaired  $t$  test). (N–Q) Islet proliferation (PCNA; N and O) and  $\alpha$  cell/ $\beta$  cell ratio (P and Q) are unchanged in  $\beta$ PHD3KO islets ( $n = 11$ –18 islets, 3–4 animals/genotype; unpaired  $t$  test). (R–T) Images (R) and quantification (S and T) showing increased  $\beta$  cell mass in  $\beta$ PHD3KO mice (scale bar: 530  $\mu$ m; inset is 5.25 $\times$  original magnification) ( $n = 3$  animals/genotype, 2-way ANOVA; unpaired  $t$  test). Data shown are mean  $\pm$  SEM. \* $P < 0.05$ , \*\* $P < 0.01$ , and NS. Scale bar: 42.5  $\mu$ m (inset 4 $\times$  original magnification) unless otherwise stated. PCNA, proliferating cell nuclear antigen; SC, standard chow; HFD, high-fat diet.

either apoptosis was restricted to smaller/medium islets or changes in the apoptosis/proliferation rate had not yet been able to counter previous  $\beta$  cell mass expansion.

*Loss of PHD3 is not associated with changes in HIF stabilization.* Previous studies have shown that PHD3 is highly regulated at the transcriptomic level by hypoxia (10), and in line with this, we also found that *Egl3* levels in WT islets were increased under hypoxic (1%  $O_2$ ) conditions (Supplemental Figure 2A). To account for HIF-dependent effects on  $\beta$  cell phenotype in SC  $\beta$ PHD3KO animals, a number of canonical HIF1 $\alpha$  target genes were assessed. Notably, the levels of *Bnip3*, *Car9*, and *Gls* were similar between normoxic (21%  $O_2$ ) SC  $\beta$ PHD3CON and  $\beta$ PHD3KO islets (Supplemental Figure 2, B–D). Further suggesting the presence of intact HIF signaling, *Bnip3* and *Car9* were upregulated to similar levels in hypoxic (1%  $O_2$ ) SC  $\beta$ PHD3CON and  $\beta$ PHD3KO islets, whereas *Gls* did not reliably increase (Supplemental Figure 2, B–D). Glucose and KCl-stimulated  $Ca^{2+}$  fluxes, shown to be sensitive to HIF stabilization (49), were similar in  $\beta$ PHD3CON and  $\beta$ PHD3KO islets exposed to hypoxia (Supplemental Figure 2, E–H).

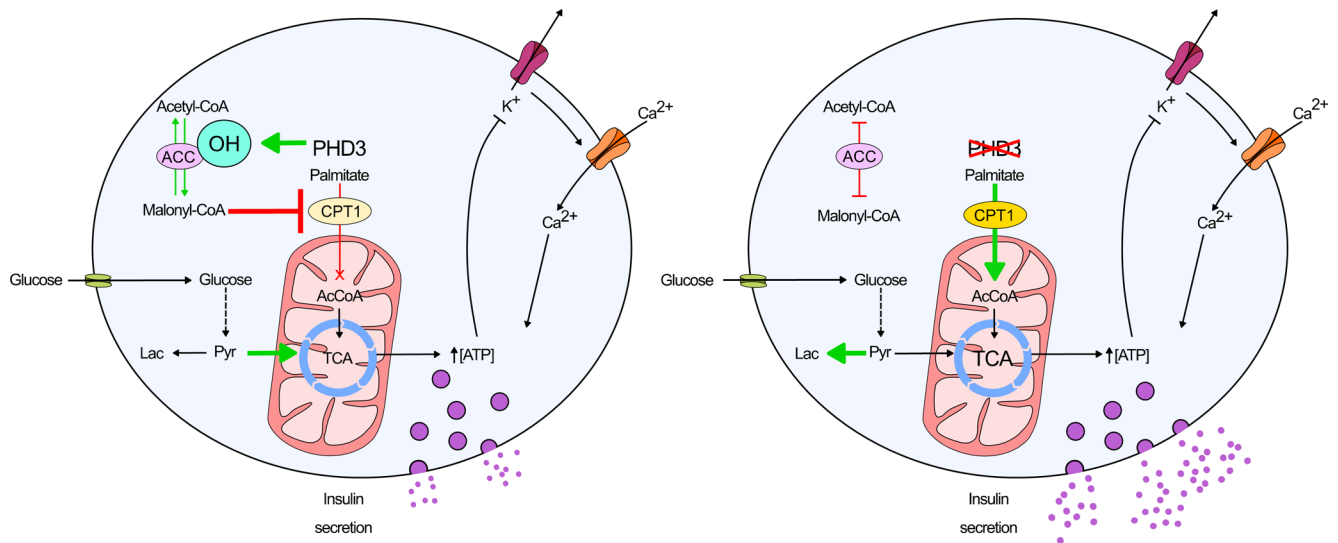
Suggesting that the stabilization of HIF1 $\alpha$  and HIF2 $\alpha$  was unlikely to be a major feature in 4 weeks HFD  $\beta$ PHD3KO islets, *Bnip3*, *Car9*, and *Gls* levels were similar to  $\beta$ PHD3CON (Supplemental Figure 2, I–K). Furthermore, after 8 weeks HFD, the HIF2 $\alpha$  target *Cnd1* remained similar in  $\beta$ PHD3CON and  $\beta$ PHD3KO islets, whereas the gene *Dll4* was downregulated (Supplemental Figure 2, L and M).

## Discussion

In the present study, we show that the  $\alpha$ -ketoglutarate-dependent PHD3 maintained  $\beta$  cell glucose sensing under states of metabolic stress associated with fatty acid abundance. Our data suggest that PHD3 is required for ensuring that acetyl-CoA derived from glycolysis preferentially feeds the TCA cycle, linking blood glucose levels with ATP/ADP generation,  $\beta$  cell electrical activity, and insulin secretion. The loss of PHD3 led to metabolic remodeling under HFD, resulting in decreased glycolytic fluxes, an increase in lactate accumulation, and utilization of fatty acids as an energy source. Thus, PHD3 appears to be a critical component of the  $\beta$  cell metabolic machinery required for glucose sensing during episodes of nutritional overload (Figure 8).

Previous studies have shown that the PHD1–3 inhibitor ethyl-3,4-dihydroxybenzoate exerts bimodal effects on islets: low concentrations increase GSIS, whereas high doses impair GSIS (27). Suggesting that these changes are mediated primarily by PHD3, siRNAs against PHD1 and PHD2 are without effect on GSIS in INS1-832/13 clonal rat  $\beta$  cells, whereas PHD3 siRNA markedly blunts release of the hormone (27). Using a conditional knockout model, our studies extend these findings to primary islets and provide further mechanistic evidence for a critical role of PHD3 in  $\beta$  cell metabolism and function. A key difference between the studies is that PHD3 loss only impairs GSIS in islets exposed to metabolic stress (HFD), whereas the effects were apparent in INS1-832/13 under normal culture conditions. The most likely explanation for this finding is the different metabolic dependencies of primary islets versus proliferative, immortalized  $\beta$  cells.

How does PHD3 maintain glucose metabolism in  $\beta$  cells? Previous studies in cancer cells and skeletal muscle have shown that PHD3 hydroxylates and activates ACC2, suppressing  $\beta$ -oxidation (24). Although  $\beta$  cells are thought to predominantly express ACC1, the levels of *ACACB*, which encodes ACC2, were found to be similar to the  $\beta$  cell transcription factor HNF1A, albeit lower than those of *ACACA*. We thus propose that the loss of PHD3 might plausibly lead to suppression of ACC2 activity, which becomes apparent during HFD when its substrate is present in abundance. Alternatively, PHD3 might hydroxylate and activate ACC1, leading



**Figure 8. Schematic showing the proposed changes that occur in  $\beta$ PHD3KO islets after HFD feeding.** In  $\beta$ PHD3CON islets, glucose is converted to pyruvate, before entering the TCA cycle to drive ATP production and insulin secretion. PHD3 activity leads to generation of malonyl-CoA, which inhibits CPT1 to suppress oxidation of fatty acids. By contrast, in  $\beta$ PHD3KO islets, CPT1 is no longer inhibited, allowing  $\beta$ -oxidation of fatty acids to proceed. As a result, fatty acid-derived acetyl-CoA feeds the TCA cycle and generates ATP/ADP while glycolytically derived pyruvate is converted to lactate to maintain REDOX status. PHD3, prolyl-4-hydroxylase 3; CPT1, carnitine palmitoyltransferase I.

to regulation of CPT1 by malonyl-CoA when fatty acids are supplied in excess, as suggested by glucose oxidation experiments. In both cases, identifying the PHD3 hydroxylation sites involved will be critical. However, assigning hydroxylation targets using mass spectrometry is currently controversial: misalignment of hydroxylation is frequently associated with the presence of residues in the tryptic fragment that can be artifactually oxidized (44, 50). Thus, studies using animals lacking PHD3 and ACC1/ACC2 in  $\beta$  cells, or alternatively the use of (relatively) specific inhibitors, would be required to definitively link the carboxylase with the phenotype here.

As normal chow contains a low proportion of calories from fat, metabolic stress was needed to reveal the full in vitro and in vivo phenotype associated with PHD3 loss. These data also support an effect of PHD3 on ACC1/ACC2 and CPT1, because without acyl-CoA derived from exogenous fatty acids, glucose would still constitute the primary fuel source and regulator of insulin release. The lack of phenotype under normal diet is unlikely to reflect the age of the animals, because even at 20 weeks of age, glucose intolerance was still not present in  $\beta$ PHD3KO mice. Of interest, the severity of the  $\beta$ PHD3KO in vivo phenotype was milder after 8 weeks versus 4 weeks HFD feeding, despite the presence of impaired glucose-dependent  $\beta$  cell function by this time point. These observations suggest that by 8 weeks HFD, compensatory protective mechanisms may become upregulated as a consequence of the metabolic rewiring in  $\beta$  cells. It will be necessary in the future to investigate the mechanistic/phenotypic changes occurring during even longer duration HFD feeding (e.g., 12–20 weeks). It will also be interesting to understand how PHD3 activity changes in other models of metabolic stress, such as *db/db* and *ob/ob* mice.

Suggesting that the phenotype associated with PHD3 loss was not due to changes in HIF signaling, no differences in the gene expression of HIF1 targets could be detected in  $\beta$ PHD3KO versus  $\beta$ PHD3CON islets. Indeed, PHD2 is the major hydroxylase that regulates HIF1 $\alpha$  stability (11, 12), with no changes in activity of the transcription factor after PHD3 loss (11, 12, 51). Thus, it is perhaps unsurprising that there was a lack of HIF1 transcriptional signature in  $\beta$ PHD3KO islets, in agreement with previous studies in other tissues (25, 51). In addition, glucose-stimulated  $\text{Ca}^{2+}$  fluxes, a sensitive readout of changes in oxygen-dependent regulation (49), were unaffected during hypoxia in  $\beta$ PHD3KO islets. Although there was a trend toward increased *Ldha* expression in HFD  $\beta$ PHD3KO islets, this was just a fraction of that previously reported in hypoxic rodent islets (52). Nonetheless, we cannot completely exclude HIF-dependent effects, and, as such, studies should be repeated either on an HIF1-null and HIF2-null background (i.e., a quadruple transgenic) or using (moderately) specific chemical inhibitors.

We acknowledge a number of limitations with the present studies. First, workup was limited to rodents, and it will be important to confirm whether or not results translate to human islets.



Although our attempts at silencing PHD3 using *EGLN3* shRNA were unsuccessful, studies using (relatively) specific PHD3 inhibitors are warranted. Second, interactions between PHD3 and ACC2 are inferred from our metabolic workup and known biochemistry. Identifying hydroxylation sites and creating corresponding ACC1/ACC2 mutants is needed, but current mass spectrometry analysis is challenging due to the assignment of false positives, as mentioned above. Third, we focused our studies on 4 and 8 weeks of HFD, and it is unclear whether the switch toward increased fatty acid utilization might be maladaptive or protective in  $\beta$ PHD3KO mice during longer periods of HFD feeding. Fourth, HFD studies were restricted to male animals, and further studies should be extended to female animals. Although sex differences in phenotype were not observed under standard diet, we cannot exclude a sexually dimorphic effect of HFD.

In summary, PHD3 possesses a conserved role in gating nutrient preference toward glucose and glycolysis during both cell transformation (24) and metabolic stress (as shown here). It will be interesting to now study whether similar effects of PHD3 are present in other cell types involved in glucose-sensing (for example, pancreatic  $\alpha$  cells, hypothalamic neurons).

## Methods

**Experimental design.** No data were excluded unless the cells displayed a nonphysiological state (i.e., impaired viability). All individual data points are reported. The measurement unit is animal or batch of islets, with experiments replicated independently. Animals and islets were randomly allocated to treatment groups to ensure that all states were represented in the different experiment arms.

**Mouse models.**  $\beta$ PHD3KO mice were generated using the Cre-*LoxP* system. *Ins1Cre* mice (JAX stock 026801), with Cre recombinase knocked into the *Ins1* gene locus, were crossbred to mice carrying floxed alleles for PHD3 (*Egln3<sup>fl/fl</sup>*; ref. 34). Adult  $\beta$ PHD3KO animals (*Ins1Cre<sup>+/-</sup> Egln3<sup>fl/fl</sup>*) and their controls ( $\beta$ PHD3CON: *Ins1<sup>wt/wt</sup> Egln3<sup>fl/fl</sup>*, *Ins1Cre<sup>+/-</sup> Egln3<sup>wt/wt</sup>*, and *Ins1<sup>wt/wt</sup> Egln3<sup>wt/wt</sup>*) were used from 8 to 20 weeks of age under both standard diet and HFD conditions. No extrapancreatic recombination has been observed in *Ins1Cre* mice, and possession of a *Cre* allele is not associated with any changes in glucose homeostasis in our hands (33, 36). Recombination efficiency of the *Ins1Cre* allele was checked using a *R26-LSL-hM4Di/mCitrine* (JAX stock 026219) DREADD reporter strain. Animals were maintained on a C57BL/6J background and backcrossed for at least 6 generations following rederivation into the animal facility. Lines were regularly refreshed by crossing to bought-in C57BL/6J (Charles River Laboratories). WT male CD1 mice aged 8–12 weeks (Charles River Laboratories) were used for confirmation of gene expression under hypoxic (1% O<sub>2</sub>) conditions.  $\beta$ PHD3CON and  $\beta$ PHD3KO mice were fed SC and/or an HFD containing 60% fat (Research Diets, catalog D12492), with body weight checked weekly until 18–20 weeks of age. Animals were maintained in a specific pathogen-free facility, with free access to food and water.

**IPGTT and OGTT.** Mice were fasted for 4 to 6 hours, before i.p. injection of glucose. Animals on SC received 2 g/kg body weight glucose, whereas those on HFD received a lower dose of 1 g/kg body weight. In our hands, this allows the measurement of blood glucose concentration without the need to dilute samples and decreases adverse reactions associated with profound hyperglycemia. Blood samples for glucose measurement were taken from the tail vein 0, 15, 30, 60, 90, and 120 minutes after the glucose challenge. Glucose was measured using a Contour XT glucometer (Bayer). For mice on SC, IPGTT was performed every 2 to 4 weeks, between 8 and 20 weeks of age. HFD-fed mice underwent IPGTT after 72 hours, 4 weeks, and 8 weeks of HFD feeding. OGTT was performed as for IPGTT, except that glucose was delivered using an oral gavage tube (2 g/kg and 1 g/kg body weight in SC-fed and HFD-fed mice, respectively).

**Serum insulin.** Blood samples were collected after i.p. glucose injection (1 g/kg body weight). Serum was separated by centrifugation, before assaying using the HTRF Mouse Serum Insulin Assay kit (Cisbio). Due to NC3R limits on blood sample volumes, insulin was measured only 0, 15, and 30 minutes after glucose injection.

**Insulin tolerance test.** Mice fasted for 4 to 6 hours (SC and 4 weeks HFD cohorts) or overnight (8 weeks HFD cohort) received 0.75 U/kg body weight insulin (Humulin S, 100 U/mL, Lilly) given by i.p. injection. Blood glucose was measured 0, 15, 30, 60, 90, and 120 minutes after insulin injection.

**Body composition measurement.** Male  $\beta$ PHD3CON and  $\beta$ PHD3KO mice fed HFD for 4 and 8 weeks were weighed and sacrificed by cervical dislocation. The following tissues were harvested and weighed immediately postmortem: visceral fat (epididymal fat pads), subcutaneous fat, brown adipose tissue, liver, and muscle (quadriceps femoris). Tissue contribution to body composition was expressed as percentage of body weight.

**Islet isolation.** Islets were isolated after bile duct injection with NB8 1 mg/mL collagenase (Serva) and Histopaque/Ficoll gradient separation (MilliporeSigma). Islets were cultured in RPMI medium containing 10% FCS, 100 U/mL penicillin, and 100 µg/mL streptomycin (MilliporeSigma) at 5% CO<sub>2</sub>, 37°C. For experiments under hypoxia, islets were incubated in a Don Whitely H35 Hypoxystation, allowing oxygen tension to be finely regulated at either 1% or 21%.

**Gene expression.** TRIzol (Thermo Fisher Scientific) purification was used for mRNA extraction, whereas cDNA was synthesized by reverse transcription. Gene expression was detected by quantitative real-time PCR, using PowerUp SYBR Green Master Mix (Thermo Fisher Scientific), and quantification was based on the 2<sup>-ΔΔCt</sup> method, expressed as fold change in gene expression. The sequences of the forward and reverse primers used in the study can be found in Supplemental Table 1.

**IHC.** Pancreata were isolated, fixed in 10% formalin, and embedded in paraffin. Paraffin slides were deparaffinized and rehydrated, before antigen retrieval using citrate buffer. Sections stained for PHD3 were incubated overnight at 4°C with guinea pig anti-insulin 1:100 (Abcam, ab7842) and rabbit anti-PHD3 1:100 (Novus Bio, NB100-139), followed by washing and 2 hours incubation at room temperature with anti-guinea pig Alexa Fluor 568 1:300 (Thermo Fisher Scientific, A-11075) and anti-rabbit Alexa Fluor 488 1:1000 (Thermo Fisher Scientific, A-21206). PCNA staining was carried out using rabbit anti-insulin 1:500 (Cell Signaling Technology, 3014S) and mouse anti-PCNA 1:500 (Cell Signaling Technology, 2586) as primary antibodies. Secondary antibodies used were anti-rabbit Alexa Fluor 568 1:500 (Thermo Fisher Scientific, A-10042) and anti-mouse Alexa Fluor 488 (Thermo Fisher Scientific; A11001). VECTASHIELD HardSet mounting medium with DAPI (Vector Laboratories) was used to mount coverslips on the sections.

Images were taken using a Zeiss LSM780 meta-confocal microscope equipped with highly sensitive GaAsP PMT detectors. Excitation was delivered at λ = 405 nm, λ = 488 nm, and λ = 561 nm for DAPI, Alexa Fluor 488, and Alexa Fluor 568, respectively. For PHD3 staining, the emitted signals were detected at λ = 410 to 472 nm, λ = 507 to 596 nm, and λ = 570 to 694 nm, for DAPI, Alexa Fluor 488, and Alexa Fluor 568, respectively. For PCNA staining, emitted signals were detected at λ = 418 to 507 nm, λ = 507 to 552 nm, and λ = 579 to 641 nm for DAPI, Alexa Fluor 488, and Alexa Fluor 568, respectively.

TUNEL staining was performed using the DeadEnd Fluorometric TUNEL System (Promega), as previously described (53). The proportion of apoptotic β cells was calculated as the area of TUNEL<sup>+</sup> staining (fluorescein-12-dUTP)/area of insulin<sup>+</sup> staining (as described above). The α cell/β cell ratio was calculated after staining with rabbit antibodies against insulin (as described above) and glucagon (primary antibody: mouse anti-glucagon 1:2000, MilliporeSigma, G2645; secondary antibody goat anti-mouse Alexa Fluor 488, 1:500, Thermo Fisher Scientific, A11001). Images were captured as described above. Excitation was delivered at λ = 405 nm, λ = 488 nm, and λ = 633 nm for DAPI, fluorescein-12-dUTP/Alexa Fluor 488, and Alexa Fluor 647, respectively. Emitted signals were detected at λ = 428 to 533 nm, λ = 498 to 559 nm, and λ = 643 to 735 nm for DAPI, fluorescein-12-dUTP/Alexa Fluor 488, and Alexa Fluor 633, respectively. For β cell mass analysis, sections were incubated with rabbit anti-insulin 1:500 (Cell Signaling Technology, 3014S) and mouse anti-glucagon 1:2000 (MilliporeSigma, G2654), followed by washing and application of goat anti-rabbit Alexa Fluor 647 1:500 (Thermo Fisher Scientific, A-21244) and goat anti-mouse DyLight 488 1:500 (Invitrogen, Thermo Fisher Scientific, 35503). Coverslips were mounted using VECTASHIELD HardSet with DAPI and 425 images per section captured using a Zeiss Axio Scan.Z1 automated slide scanner equipped with a 20×/0.8 NA objective. β Cell mass (%) was calculated as the area of insulin<sup>+</sup> staining/area of the pancreas. Excitation was delivered at λ = 330 to 375 nm and λ = 590 to 650 nm for DAPI and Alexa Fluor 647, respectively. Emitted signals were detected using an Orca Flash 4.0 at λ = 430 to 470 nm and λ = 663 to 738 nm for DAPI and Alexa Fluor 647, respectively.

**Insulin secretion in vitro and insulin measurement.** Islets (10 to 15 size matched) were stimulated with 3 mM glucose, 16.7 mM glucose, and 16.7 mM glucose plus 20 nM Exendin-4 in HEPES-bicarbonate buffer (mM: 120 NaCl, 4.8 KCl, 24 NaHCO<sub>3</sub>, 0.5 Na<sub>2</sub>HPO<sub>4</sub>, 5 HEPES, 2.5 CaCl<sub>2</sub>, 1.2 MgCl<sub>2</sub>; MilliporeSigma) supplemented with 0.1% BSA at 37°C. Insulin content was extracted using acid ethanol. Insulin concentration (ng/mL) was measured using an HTRF Insulin Ultra-Sensitive Assay kit (PerkinElmer, 62IN2PEG). For experiments with exogenous lipids, islets were treated with either 0.75% BSA control or 150 µM sodium palmitate dissolved in 0.75% BSA for 48 to 72 hours before the secretion assay. This concentration and timing do not induce profound lipotoxicity in our hands, allowing the study of metabolic phenotype in the absence of β cell failure.

**Live imaging.** Islets were loaded with the Ca<sup>2+</sup> indicators Fluo8 (AAT Bioquest, 21083) or Fura2 (AAT Bioquest, 21020), before imaging using a Crest X-Light spinning disk microscope coupled to a Nikon Ti-E base

with  $10 \times 0.4$  NA and  $20 \times 0.8$  NA objectives. For Fluo8 imaging, excitation was delivered at  $\lambda = 458$  to  $482$  nm using a Lumencor Spectra X light engine. Emission was captured at  $\lambda = 500$  to  $550$  nm using a highly sensitive Photometrics Delta Evolve EM-CCD. For experiments with the ratiometric  $\text{Ca}^{2+}$  indicator, Fura2, excitation was delivered at  $\lambda = 340$  nm and  $\lambda = 385$  nm using Cairn Research Fura LEDs in widefield mode, with emitted signals detected at  $\lambda = 470$  to  $550$  nm.

For ATP/ADP imaging, islets were transduced with the ATP/ADP sensor Perceval (a gift from Gary Yellen, Harvard University, Boston, Massachusetts, USA; ref. 54) using an adenoviral vector and imaged identically to Fluo8. For FRET-based cAMP imaging, islets were infected with adenovirus harboring Epac2-camps (a gift from Dermot Cooper, University of Cambridge, Cambridge, United Kingdom). Excitation was delivered at  $430$  to  $450$  nm, with emission detected at  $\lambda = 460$  to  $500$  and  $\lambda = 520$  to  $550$  nm for Cerulean and Citrine, respectively.

In all cases, HEPES-bicarbonate buffer was used (mM:  $120$  NaCl,  $4.8$  KCl,  $24$  NaHCO<sub>3</sub>,  $0.5$  Na<sub>2</sub>HPO<sub>4</sub>,  $5$  HEPES,  $2.5$  CaCl<sub>2</sub>,  $1.2$  MgCl<sub>2</sub>, and  $3$ – $17$  D-glucose), with glucose and drugs (Exendin-4, MilliporeSigma E144-1MG, and etomoxir, MilliporeSigma E1905-5MG) being added at the indicated concentrations and time points. Fura2 and Epac2-camps traces were normalized as the ratio of  $340:385$  or Cerulean/Citrine, respectively. Data were presented as raw or  $F/F_{\min}$  where  $F$  = fluorescence at any time point and  $F_{\min}$  = minimum fluorescence, or  $R/R_0$  where  $R$  = fluorescence at any time point and  $R_0$  = fluorescence at  $0$  minutes.

*Glucose oxidation assays and metabolic tracing.* For <sup>14</sup>C glucose oxidation and lipid incorporation, batches of  $40$  islets were used for quantification of <sup>14</sup>C glucose (PerkinElmer) oxidation and incorporation into lipids by scintillation spectrometry, as previously described (43).

GC-MS–based <sup>13</sup>C<sub>6</sub> mass isotopomer distribution was assessed as follows. To ensure steady state,  $50$  to  $100$  islets were cultured with  $10$  mM <sup>13</sup>C<sub>6</sub>-[U]-glucose (MilliporeSigma, 389374) for  $24$  hours (55), before extraction of metabolites using sequentially prechilled HPLC-grade methanol, HPLC-grade distilled H<sub>2</sub>O containing  $1$  μg/mL D6-glutaric acid, and HPLC-grade chloroform at  $-20^\circ\text{C}$  (all from MilliporeSigma). Polar fractions were separated by centrifugation, vacuum dried, and solubilized in  $2\%$  methoxyamine hydrochloric acid in pyridine (Thermo Fisher Scientific). Samples were derivatized using *N*-tertbutyldimethylsilyl-*N*-methyltrifluoroacetamide with  $1\%$  (w/v) tertbutyldimethyl-chlorosilane (both from MilliporeSigma), before analysis on an Agilent 7890B gas chromatograph mass spectrometer, equipped with a medium polar range polydimethylsiloxane GC column (DB35-MS). Mass isotopomer distributions were determined based upon spectra corrected for natural isotope abundance. Data were analyzed using MetaboliteDetector software (56).

*D31-palmitate incorporation and oxidation assays.* For D31-palmitate tracing,  $140$  islets per genotype were cultured at  $5\%$  CO<sub>2</sub>,  $37^\circ\text{C}$ , in a solution of  $150$  μM D31-palmitic acid ( $98\%$ ; Cambridge Isotope Laboratories, DLM-215-1), and dissolved in RPMI supplemented with  $10\%$  FBS,  $100$  U/mL penicillin,  $100$  μg/mL streptomycin, and  $10\%$  BSA. At  $2$  hours and  $16$  hours after incubation,  $70$  islets per genotype were collected in  $250$  μL of PBS and lysed prior to DNA quantification and freezing at  $-20^\circ\text{C}$ . A  $200$  μL aliquot of D31-palmitate–labeled solution was also collected and stored at  $-20^\circ\text{C}$ . Similarly, upon overnight incubation, the remaining islets were collected in PBS and lysed and the DNA was quantified. The leftover labeling solution was also collected and frozen at  $-20^\circ\text{C}$  for measures of background signal.

Total lipids were extracted from cell lysates (57) and prepared and analyzed by a 6890N Network GC System (Agilent Technologies) as previously described (58). An internal standard containing a known concentration was added to samples for the quantification of total fatty acids. Fatty acid methyl esters were identified by their retention times compared with a standard containing  $31$  known fatty acids. Intracellular D31 enrichment was determined by GC-MS using a 5890 GC coupled to a 5973N MSD (Agilent Technologies). Ions with mass-to-charge ratios ( $m/z$ ) of  $M+0$  and  $M+31$  were determined by selected ion monitoring. As a marker of fatty acid oxidation, we measured the appearance of  $2\text{H}_2\text{O}$  derived from D31-palmitate in cell media using a Finnigan GasBench-II (Thermo Fisher Scientific; ref. 59).

*Visualization of transcriptomic data sets.* Details of the RNA-Seq and ChIP-Seq experiments, as well as human islet donors, were previously described (48, 60–62). All transcriptomic data sets used to generate Supplemental Figure 1, A and B, are publicly available through EMBL-EBI and GEO databases and freely accessible through <http://pasqualilab.upf.edu/app/isletregulome>. For visualization, processed RNA-Seq and ChIP-Seq (bigWig) data files were downloaded (EBI: E-MTAB-1919, E-MTAB-1294 and GEO: GSE151405) and loaded onto the local open source University of California Santa Cruz Genome Browser (<http://genome.ucsc.edu/>; ref. 63), under a private session.

**Statistics.** Measurements were performed on discrete samples unless otherwise stated. Data normality was assessed using D'Agostino-Person test. All analyses were conducted using GraphPad Prism software. Pairwise comparisons were made using Student's 2-tailed unpaired or paired *t* test. Multiple interactions were determined using 1-way ANOVA or 2-way ANOVA, adjusted for repeated measures where relevant. Pairwise post hoc testing was performed using Sidak's test, or Tukey's test where more than 2 groups were considered. Where a highly significant interaction was detected using 2-way ANOVA, but post hoc testing was just above  $P = 0.05$ , multiple comparisons were accounted for using the FDR followed by the 2-stage linear step-up method of Benjamini, Krieger, and Yekutieli. For nonparametric multiple comparison, Kruskal-Wallis test was used followed by Dunn's post hoc test. Degrees of freedom were accounted for during all post hoc testing. A *P* value of less than 0.05 was considered significant.

**Study approval.** Animal studies were regulated by the Animals (Scientific Procedures) Act 1986 of the United Kingdom (Personal Project Licence P2ABC3A83), and approval was granted by the University of Birmingham's Animal Welfare and Ethical Review Body.

### Author contributions

DN, FC, KV, RBB, RLW, JPB, MH, JWJ, JC, and DJH performed experiments and analyzed data. FC, AT, EMJ, GGL, LH, and DAT ran and analyzed samples for GC-MS. IA analyzed genomic data. DJH and DAT conceived and designed the studies. DJH supervised the studies. DJH, DN, FC, and DAT wrote the paper with input from all authors.

### Acknowledgments

DJH was supported by MRC (MR/N00275X/1 and MR/S025618/1) and Diabetes UK (17/0005681) Project Grants. DAT was supported by Cancer Research UK Grants (C42109/A26982 and C42109/A24891). JWJ was supported by the Canadian Institute of Health Research (CIHR, PJT-159552). LH was supported by a British Heart Foundation Senior Fellowship (FS/15/56/31645). GGL was supported by a Wellcome Trust Senior Research Fellowship (104612/Z/14/Z). This project has received funding from the European Research Council under the European Union's Horizon 2020 research and innovation programme (Starting Grant 715884 to DJH). We thank Mathew Coleman (University of Birmingham) for useful discussions.

Address correspondence to: Daniel A. Tennant or David J. Hodson, Institute of Metabolism & Systems Research, IBR Tower, College of Medical and Dental Sciences, Birmingham B15 2TT, United Kingdom. Email: d.tennant@bham.ac.uk (DAT); Email: d.hodson@bham.ac.uk (DJH).

1. Bruick RK. Oxygen sensing in the hypoxic response pathway: regulation of the hypoxia-inducible transcription factor. *Genes Dev.* 2003;17(21):2614–2623.
2. Schofield CJ, Ratcliffe PJ. Oxygen sensing by HIF hydroxylases. *Nat Rev Mol Cell Biol.* 2004;5(5):343–354.
3. Bruick RK, McKnight SL. A conserved family of prolyl-4-hydroxylases that modify HIF. *Science.* 2001;294(5545):1337–1340.
4. Epstein AC, et al. *C. elegans* EGL-9 and mammalian homologs define a family of dioxygenases that regulate HIF by prolyl hydroxylation. *Cell.* 2001;107(1):43–54.
5. Kaelin WG Jr, Ratcliffe PJ. Oxygen sensing by metazoans: the central role of the HIF hydroxylase pathway. *Mol Cell.* 2008;30(4):393–402.
6. Chan DA, et al. Tumor vasculature is regulated by PHD2-mediated angiogenesis and bone marrow-derived cell recruitment. *Cancer Cell.* 2009;15(6):527–538.
7. Duran RV, et al. HIF-independent role of prolyl hydroxylases in the cellular response to amino acids. *Oncogene.* 2013;32(38):4549–4556.
8. Luo W, et al. Pyruvate kinase M2 is a PHD3-stimulated coactivator for hypoxia-inducible factor 1. *Cell.* 2011;145(5):732–744.
9. Henze AT, et al. Loss of PHD3 allows tumours to overcome hypoxic growth inhibition and sustain proliferation through EGFR. *Nat Commun.* 2014;5:5582.
10. Appelhoff RJ, et al. Differential function of the prolyl hydroxylases PHD1, PHD2, and PHD3 in the regulation of hypoxia-inducible factor. *J Biol Chem.* 2004;279(37):38458–38465.
11. Berra E, et al. HIF prolyl-hydroxylase 2 is the key oxygen sensor setting low steady-state levels of HIF-1 $\alpha$  in normoxia. *EMBO J.* 2003;22(16):4082–4090.
12. Tennant DA, et al. Reactivating HIF prolyl hydroxylases under hypoxia results in metabolic catastrophe and cell death. *Oncogene.* 2009;28(45):4009–4021.
13. Kiss J, et al. Loss of the oxygen sensor PHD3 enhances the innate immune response to abdominal sepsis. *J Immunol.* 2012;189(4):1955–1965.
14. Walmsley SR, et al. Prolyl hydroxylase 3 (PHD3) is essential for hypoxic regulation of neutrophilic inflammation in humans



- and mice. *J Clin Invest*. 2011;121(3):1053–1063.
15. Su Y, et al. PHD3 regulates differentiation, tumour growth and angiogenesis in pancreatic cancer. *Br J Cancer*. 2010;103(10):1571–1579.
  16. Schlisio S, et al. The kinesin KIF1Bbeta acts downstream from EglN3 to induce apoptosis and is a potential 1p36 tumor suppressor. *Genes Dev*. 2008;22(7):884–893.
  17. Place TL, Domann FE. Prolyl-hydroxylase 3: evolving roles for an ancient signaling protein. *Hypoxia (Auckl)*. 2013;2013(1):13–17.
  18. Tennant DA, Gottlieb E. HIF prolyl hydroxylase-3 mediates alpha-ketoglutarate-induced apoptosis and tumor suppression. *J Mol Med (Berl)*. 2010;88(8):839–849.
  19. Boulahbel H, et al. Prolyl hydroxylases as regulators of cell metabolism. *Biochem Soc Trans*. 2009;37(1):291–294.
  20. Chen N, et al. The oxygen sensor PHD3 limits glycolysis under hypoxia via direct binding to pyruvate kinase. *Cell Res*. 2011;21(6):983–986.
  21. Lee S, et al. Neuronal apoptosis linked to EglN3 prolyl hydroxylase and familial pheochromocytoma genes: developmental culling and cancer. *Cancer Cell*. 2005;8(2):155–167.
  22. Dang L, et al. Cancer-associated IDH1 mutations produce 2-hydroxyglutarate. *Nature*. 2009;462(7274):739–744.
  23. Tomlinson IP, et al. Germline mutations in FH predispose to dominantly inherited uterine fibroids, skin leiomyomata and papillary renal cell cancer. *Nat Genet*. 2002;30(4):406–410.
  24. German NJ, et al. PHD3 loss in cancer enables metabolic reliance on fatty acid oxidation via deactivation of ACC2. *Mol Cell*. 2016;63(6):1006–1020.
  25. Taniguchi CM, et al. Cross-talk between hypoxia and insulin signaling through Phd3 regulates hepatic glucose and lipid metabolism and ameliorates diabetes. *Nat Med*. 2013;19(10):1325–1330.
  26. Yano H, et al. PHD3 regulates glucose metabolism by suppressing stress-induced signalling and optimising gluconeogenesis and insulin signalling in hepatocytes. *Sci Rep*. 2018;8(1):14290.
  27. Huang M, et al. Role of prolyl hydroxylase domain proteins in the regulation of insulin secretion. *Physiol Rep*. 2016;4(5):e12722.
  28. De Vos A, et al. Human and rat beta cells differ in glucose transporter but not in glucokinase gene expression. *J Clin Invest*. 1995;96(5):2489–2495.
  29. German MS. Glucose sensing in pancreatic islet beta cells: the key role of glucokinase and the glycolytic intermediates. *Proc Natl Acad Sci U S A*. 1993;90(5):1781–1785.
  30. Rutter GA, et al. Pancreatic  $\beta$ -cell identity, glucose sensing and the control of insulin secretion. *Biochem J*. 2015;466(2):203–218.
  31. Pullen TJ, Rutter GA. When less is more: the forbidden fruits of gene repression in the adult  $\beta$ -cell. *Diabetes Obes Metab*. 2013;15(6):503–512.
  32. Lemaire K, et al. Disallowed and allowed gene expression: two faces of mature islet beta cells. *Annu Rev Nutr*. 2016;36:45–71.
  33. Thorens B, et al. Ins1(Cre) knock-in mice for beta cell-specific gene recombination. *Diabetologia*. 2015;58(3):558–565.
  34. Takeda K, et al. Placental but not heart defects are associated with elevated hypoxia-inducible factor alpha levels in mice lacking prolyl hydroxylase domain protein 2. *Mol Cell Biol*. 2006;26(22):8336–8346.
  35. Mosleh E, et al. Ins1-Cre and Ins1-CreER gene replacement alleles are susceptible to silencing by DNA hypermethylation. *Endocrinology*. 2020;161(8):bqaa054.
  36. Johnston NR, et al. Beta cell hubs dictate pancreatic islet responses to glucose. *Cell Metab*. 2016;24(3):389–401.
  37. Nasteska D, et al. PDX1(LOW) MAFA(LOW) beta-cells contribute to islet function and insulin release. *Nat Commun*. 2021;12(1):674.
  38. Blodgett DM, et al. Novel observations from next-generation RNA sequencing of highly purified human adult and fetal islet cell subsets. *Diabetes*. 2015;64(9):3172–3181.
  39. Benner C, et al. The transcriptional landscape of mouse beta cells compared to human beta cells reveals notable species differences in long non-coding RNA and protein-coding gene expression. *BMC Genomics*. 2014;15:620.
  40. Komatsu H, et al. Oxygen environment and islet size are the primary limiting factors of isolated pancreatic islet survival. *PLoS One*. 2017;12(8):e0183780.
  41. Nauck MA, et al. Incretin effects of increasing glucose loads in man calculated from venous insulin and C-peptide responses. *J Clin Endocrinol Metab*. 1986;63(2):492–498.
  42. da Silva Xavier G, Hodson DJ. Mouse models of peripheral metabolic disease. *Best Pract Res Clin Endocrinol Metab*. 2018;32(3):299–315.
  43. Cantley J, et al. Disruption of beta cell acetyl-CoA carboxylase-1 in mice impairs insulin secretion and beta cell mass. *Diabetologia*. 2019;62(1):99–111.
  44. Yoon H, et al. PHD3 loss promotes exercise capacity and fat oxidation in skeletal muscle. *Cell Metab*. 2020;32(2):215–228.
  45. Ronnebaum SM, et al. Chronic suppression of acetyl-CoA carboxylase 1 in beta-cells impairs insulin secretion via inhibition of glucose rather than lipid metabolism. *J Biol Chem*. 2008;283(21):14248–14256.
  46. MacDonald MJ, et al. The role of rapid lipogenesis in insulin secretion: insulin secretagogues acutely alter lipid composition of INS-1 832/13 cells. *Arch Biochem Biophys*. 2008;470(2):153–162.
  47. Hrvatin S, et al. Differentiated human stem cells resemble fetal, not adult,  $\beta$  cells. *Proc Natl Acad Sci U S A*. 2014;111(8):3038–3043.
  48. Moran I, et al. Human  $\beta$  cell transcriptome analysis uncovers lncRNAs that are tissue-specific, dynamically regulated, and abnormally expressed in type 2 diabetes. *Cell Metab*. 2012;16(4):435–448.
  49. Cantley J, et al. Deletion of the von Hippel-Lindau gene in pancreatic beta cells impairs glucose homeostasis in mice. *J Clin Invest*. 2009;119(1):125–135.
  50. Cockman ME, et al. Lack of activity of recombinant HIF prolyl hydroxylases (PHDs) on reported non-HIF substrates. *Elife*. 2019;8:e46490.
  51. Bishop T, et al. Abnormal sympathoadrenal development and systemic hypotension in PHD3 $^{-/-}$  mice. *Mol Cell Biol*. 2008;28(10):3386–3400.
  52. Cantley J, et al. A preexistent hypoxic gene signature predicts impaired islet graft function and glucose homeostasis. *Cell Transplant*. 2013;22(11):2147–2159.
  53. Hodson DJ, et al. ADCY5 couples glucose to insulin secretion in human islets. *Diabetes*. 2014;63(9):3009–3021.

54. Berg J, et al. A genetically encoded fluorescent reporter of ATP:ADP ratio. *Nat Methods*. 2009;6(2):161–166.
55. Wortham M, et al. Integrated in vivo quantitative proteomics and nutrient tracing reveals age-related metabolic rewiring of pancreatic  $\beta$  cell function. *Cell Rep*. 2018;25(10):2904–2918.
56. Hiller K, et al. MetaboliteDetector: comprehensive analysis tool for targeted and nontargeted GC/MS based metabolome analysis. *Anal Chem*. 2009;81(9):3429–3439.
57. Folch J, et al. A simple method for the isolation and purification of total lipides from animal tissues. *J Biol Chem*. 1957;226(1):497–509.
58. Gunn PJ, et al. In vitro cellular models of human hepatic fatty acid metabolism: differences between Huh7 and HepG2 cell lines in human and fetal bovine culturing serum. *Physiol Rep*. 2017;5(24):e13532.
59. Law L.K, et al. A novel functional assay for simultaneous determination of total fatty acid beta-oxidation flux and acylcarnitine profiling in human skin fibroblasts using (2)H(31)-palmitate by isotope ratio mass spectrometry and electrospray tandem mass spectrometry. *Clin Chim Acta*. 2007;382(1-2):25–30.
60. Akerman I, et al. Human pancreatic  $\beta$  cell lncRNAs control cell-specific regulatory networks. *Cell Metab*. 2017;25(2):400–411.
61. Pasquali L, et al. Pancreatic islet enhancer clusters enriched in type 2 diabetes risk-associated variants. *Nat Genet*. 2014;46(2):136–143.
62. Akerman I, et al. Neonatal diabetes mutations disrupt a chromatin pioneering function that activates the human insulin gene. *Cell Rep*. 2021;35(2):108981.
63. Kent WJ, et al. The human genome browser at UCSC. *Genome Res*. 2002;12(6):996–1006.