

Genetic causes of neonatal and infantile hypercalcaemia

Gorvin, Caroline M

DOI:

[10.1007/s00467-021-05082-z](https://doi.org/10.1007/s00467-021-05082-z)

License:

Creative Commons: Attribution (CC BY)

Document Version

Publisher's PDF, also known as Version of record

Citation for published version (Harvard):

Gorvin, CM 2021, 'Genetic causes of neonatal and infantile hypercalcaemia', *Pediatric Nephrology*.
<https://doi.org/10.1007/s00467-021-05082-z>

[Link to publication on Research at Birmingham portal](#)

General rights

Unless a licence is specified above, all rights (including copyright and moral rights) in this document are retained by the authors and/or the copyright holders. The express permission of the copyright holder must be obtained for any use of this material other than for purposes permitted by law.

- Users may freely distribute the URL that is used to identify this publication.
- Users may download and/or print one copy of the publication from the University of Birmingham research portal for the purpose of private study or non-commercial research.
- User may use extracts from the document in line with the concept of 'fair dealing' under the Copyright, Designs and Patents Act 1988 (?)
- Users may not further distribute the material nor use it for the purposes of commercial gain.

Where a licence is displayed above, please note the terms and conditions of the licence govern your use of this document.

When citing, please reference the published version.

Take down policy

While the University of Birmingham exercises care and attention in making items available there are rare occasions when an item has been uploaded in error or has been deemed to be commercially or otherwise sensitive.

If you believe that this is the case for this document, please contact UBIRA@lists.bham.ac.uk providing details and we will remove access to the work immediately and investigate.



Genetic causes of neonatal and infantile hypercalcaemia

Caroline M. Gorvin^{1,2}

Received: 11 February 2021 / Revised: 25 March 2021 / Accepted: 6 April 2021
© The Author(s) 2021

Abstract

The causes of hypercalcaemia in the neonate and infant are varied, and often distinct from those in older children and adults. Hypercalcaemia presents clinically with a range of symptoms including failure to thrive, poor feeding, constipation, polyuria, irritability, lethargy, seizures and hypotonia. When hypercalcaemia is suspected, an accurate diagnosis will require an evaluation of potential causes (e.g. family history) and assessment for physical features (such as dysmorphology, or subcutaneous fat deposits), as well as biochemical measurements, including total and ionised serum calcium, serum phosphate, creatinine and albumin, intact parathyroid hormone (PTH), vitamin D metabolites and urinary calcium, phosphate and creatinine. The causes of neonatal hypercalcaemia can be classified into high or low PTH disorders. Disorders associated with high serum PTH include neonatal severe hyperparathyroidism, familial hypocalciuric hypercalcaemia and Jansen's metaphyseal chondrodysplasia. Conditions associated with low serum PTH include idiopathic infantile hypercalcaemia, Williams-Beuren syndrome and inborn errors of metabolism, including hypophosphatasia. Maternal hypocalcaemia and dietary factors and several rare endocrine disorders can also influence neonatal serum calcium levels. This review will focus on the common causes of hypercalcaemia in neonates and young infants, considering maternal, dietary, and genetic causes of calcium dysregulation. The clinical presentation and treatment of patients with these disorders will be discussed.

Keywords Calcium homeostasis · Genetic disease · Parathyroid hormone · Phosphate · Vitamin D

Introduction

Hypercalcaemia in the neonate and infant, although uncommon, can have serious long-term consequences, including nephrocalcinosis that may cause permanent kidney damage, osteoporosis and neurodevelopmental impairments, and has varied etiologies (Table 1). Hypercalcaemia is defined as a serum calcium concentration two standard deviations greater than the normal mean. An accurate determination of the serum calcium concentration with age-appropriate normal ranges (Table 2) is required as serum calcium levels are higher in newborns and preterm infants and decline with age [1, 3]. In late gestation, calcium is actively transported across the

placenta to facilitate mineralisation of the foetal skeleton, resulting in relative foetal hypercalcaemia. At birth, a transient decrease in serum calcium occurs as active placental transport ends upon cutting the umbilical cord [4]. This transient hypocalcaemia is more pronounced in preterm infants, due to the early discontinuation of transplacental calcium transport and reduced responses to parathyroid hormone (PTH) and infants of diabetic mothers, caused by neonatal functional hypoparathyroidism due to maternal hypomagnesemia [5]. Hypercalcaemia presents clinically with a range of symptoms including failure to thrive, poor feeding, constipation, polyuria, irritability, lethargy, seizures and hypotonia. When hypercalcaemia is suspected, an accurate diagnosis will require an evaluation of potential causes (e.g. family history or diet) and assessment for physical features (such as dysmorphology, granulomatous disease or subcutaneous fat deposits), as well as biochemical measurements. These measurements should include total and ionised serum calcium, serum albumin to calculate corrected serum calcium, serum phosphate, creatinine, intact PTH, vitamin D metabolites and urinary calcium, phosphate and creatinine [6].

✉ Caroline M. Gorvin
C.Gorvin@bham.ac.uk

¹ Institute of Metabolism and Systems Research and Centre for Endocrinology, Diabetes and Metabolism, University of Birmingham, Birmingham B15 2TT, UK

² Centre of Membrane Proteins and Receptors (COMPARE), Universities of Birmingham and Nottingham, Birmingham B15 2TT, UK

Table 1 Causes of neonatal/infantile hypercalcaemia

Disease	Causes
High serum PTH	<p>Inactivating mutations in the CaSR gene – most often homozygous or compound heterozygous</p> <p>Inactivating mutations in the CaSR gene – most often heterozygous;</p> <p>Heterozygous inactivating mutations in <i>GNA11</i> and <i>AP2σ</i> genes (encoded by <i>GNA11</i> and <i>AP2S1</i>, respectively)</p>
Low serum PTH	<p>Maternal hypoparathyroidism or maternal hypocalcaemia</p> <p>Excess calcium in enriched formula;</p> <p>Low phosphate by parenteral feeding, incorrectly prepared formulas;</p> <p>Excess vitamin D intake by the infant or the breast-feeding mother;</p> <p>Excess vitamin A intake by enteral feeding</p>
<p>Jansen's metaphyseal chondrodysplasia</p> <p>Idiopathic infantile hypercalcaemia (IIH)</p>	<p>Inactivating mutations in the <i>PTH1R</i> gene</p> <p>Homozygous inactivating mutations in the cytochrome P450, 24-hydroxylase gene (<i>CYP24A1</i>);</p> <p>Homozygous inactivating mutations in the sodium-phosphate co-transporter NaPi-IIa (encoded by <i>SLC34A1</i>)</p>
<p>Williams-Beuren syndrome</p> <p>Hypophosphatasia</p>	<p>Microdeletion of 26–28 genes on 7q11.23</p> <p>Inactivating mutations in the tissue non-specific isoenzyme of alkaline phosphatase (TNSALP, encoded by <i>ALPL</i>)</p>
Blue-diaper syndrome	<p>A mutation in the pro-protein convertase subtilisin/kexin type 1 (<i>PCSK1</i>) has been reported in one case, although this infant did not have hypercalcaemia. Genetic cause unknown.</p>
Congenital glucose-galactose malabsorption	<p>Homozygous inactivating mutations in the sodium-dependent glucose transporter-1 (SGLT-1)</p>
Congenital lactase deficiency	<p>Homozygous or compound heterozygous mutations in the lactase (<i>LCT</i>) gene</p>
Subcutaneous fat necrosis	<p>Necrosis and granulomatous infiltrate following traumatic birth or therapeutic hypothermia</p>
Bartter's syndrome	<p>Cases identified in infants with mutations of the sodium-potassium-chloride co-transporter NKCC2 (encoded by <i>SLC12A1</i>) and the potassium channel ROMK (encoded by <i>KCNJ1</i>)</p>
<p>Intrauterine growth retardation, metaphyseal dysplasia, adrenal hypoplasia congenita, and genital anomalies (IMAGe syndrome)</p> <p>Hyperthyroidism</p>	<p>Heterozygous mutations in the cyclin-dependent kinase inhibitor 1C (<i>CDKN1C</i>) gene</p> <p>Maternal Graves' disease</p> <p>Neonatal hypothyroidism e.g. autosomal dominant non-autoimmune hyperthyroidism, McCune-Albright syndrome</p>
Adrenal insufficiency	<p>Reduced glomerular filtration rate and/or increased 1α-hydroxylase activity</p>
PTHrP-secreting tumours	<p>PTHrP binding to PTH1R</p>
Drugs	<p>Thiazides and lithium</p>

Table 2 Age-specific reference intervals of serum calcium concentrations

Age range	Total serum calcium		Ionised serum calcium	
	(mg/dL)	(mmol/L)	(mg/dL)	(mmol/L)
Cord blood	8.2–11.2	2.05–2.80	5.20–6.40	1.30–1.60
Neonate (24 h)	–	–	4.40–5.44	1.10–1.36
Neonate (5 days)	–	–	4.88–5.92	1.22–1.38
Birth to 90 days	8.0–11.3	2.0–2.8	–	–
91–180 days	8.9–11.2	2.2–2.8	–	–
181–364 days	9.0–11.3	2.3–2.8	–	–
1–3 years	8.9–11.1	2.2–2.8	4.80–5.52	1.20–1.38

Information on total serum calcium from Roizen et al. [1]. These individuals were reported to have a plasma albumin in the normal range. Cord blood calcium and ionised serum calcium concentrations were adapted from Stokes et al. [2]

“–” inserted where information was not available

Serum calcium levels are maintained by interplay between the parathyroid glands, kidney, gut and bone (Fig. 1). When serum calcium concentrations are low, the parathyroid glands synthesise and secrete PTH, which acts on PTH receptors (PTH1R) on bone and kidney cells. At bone, this leads to enhanced resorption and consequent increased efflux of calcium and phosphate. At the kidney, PTH reduces calcium excretion and enhances 1,25(OH)₂D₃ synthesis, which stimulates intestinal calcium absorption. The net effect is a normalisation of serum calcium levels [3, 7–9]. Elevations in serum calcium outside the normal range activate the calcium-sensing receptor, a G protein-coupled receptor (GPCR) expressed on parathyroid cell surfaces, which suppresses PTH secretion [3, 7–9]. Vitamin D activation, and subsequent inactivation, requires a series of enzymatic reactions beginning with hydroxylation in the liver by 25-hydroxylase (CYP2R1) to form 25-hydroxyvitamin D₃. A second hydroxylation in the kidney, by 1α-hydroxylase (CYP27B1), generates the active form 1,25(OH)₂D₃, which can bind to the vitamin D receptor. Inactivation requires 24-hydroxylase (CYP24A1) [3, 7–9].

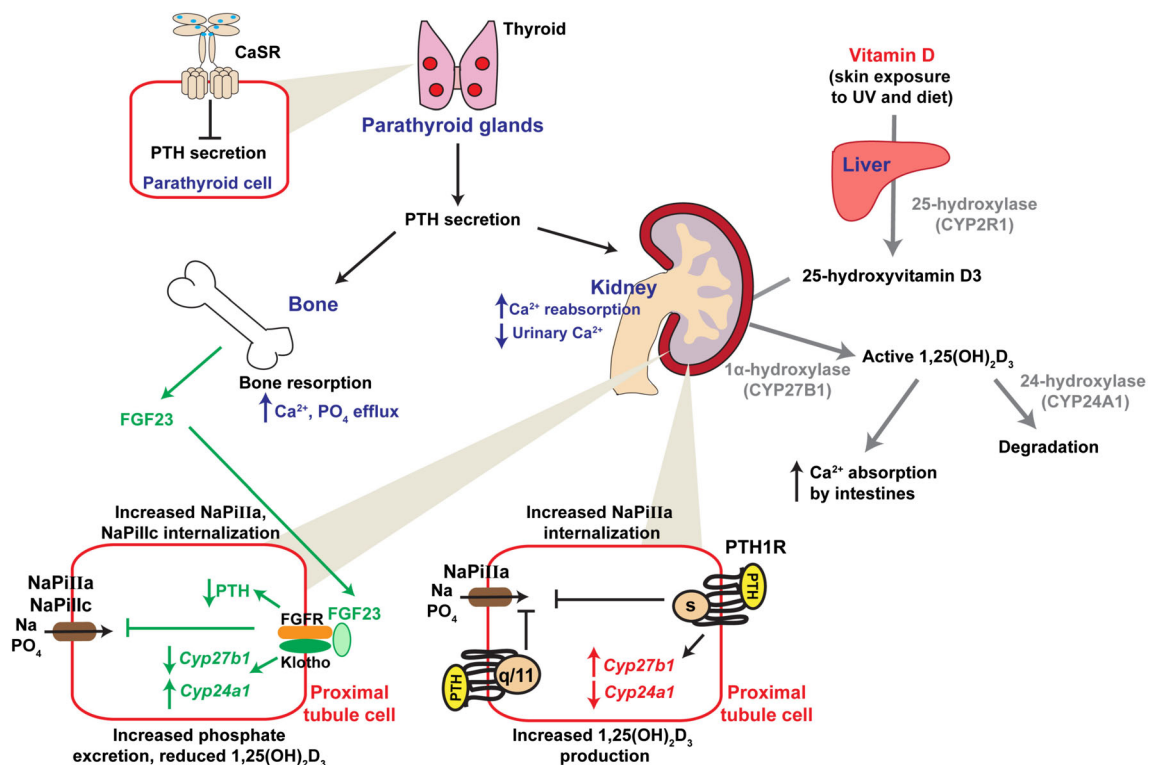


Fig. 1 Calcium regulation at the parathyroid-bone-kidney-gut axis. Serum calcium concentrations are detected by the calcium-sensing receptor (CaSR) on parathyroid cell surfaces. CaSR signalling inhibits PTH secretion. In the presence of low serum calcium or magnesium, this inhibition is relieved, allowing PTH secretion to occur. PTH acts at bone to increase resorption and calcium release, and kidney reducing calcium excretion. At kidney proximal tubules, PTH1R activates signalling pathways that stimulate NaPi-IIa internalisation which reduces phosphate uptake and alters *CYP27B1* and *CYP24A1* expression, resulting in 1,25(OH)₂D₃ synthesis. Vitamin D activation involves hydroxylation in

the liver by 25-hydroxylase (CYP2R1) to form 25-hydroxyvitamin D₃, and at the kidney, by 1α-hydroxylase (CYP27B1), to generate the active 1,25(OH)₂D₃, which can bind to the vitamin D receptor. Inactivation requires 24-hydroxylase (CYP24A1). In the FGF23-klotho axis (shown in green), FGF23 is secreted by osteocytes and binds to the FGF receptor (FGFR)-klotho complex at kidney proximal tubules, where it reduces PTH transcription and plasma membrane expression of NaPi-IIa and NaPi-IIc, resulting in increased phosphate excretion. FGF23 also reduces synthesis of 1,25(OH)₂D by inhibiting *CYP27B1* and stimulating *CYP24A1*.

FGF23 secretion by osteocytes is stimulated by $1,25(\text{OH})_2\text{D}_3$. At the kidney proximal tubule, FGF binding to the FGF receptor (FGFR)–klotho complex stimulates signalling pathways that decrease PTH transcription and reduce plasma membrane expression of sodium–phosphate transporters resulting in reduced phosphate uptake and increased urinary excretion. FGF23 also reduces synthesis of $1,25(\text{OH})_2\text{D}_3$ by inhibiting *CYP27B1* and stimulating *CYP24A1* [3, 7] (Fig. 1). In the developing foetus, calcium homeostasis is regulated, in part, by the parathyroid hormone-related peptide (PTHrP), while PTH, $1,25(\text{OH})_2\text{D}_3$ and FGF23 are low in foetal circulation [10].

Causes of neonatal hypercalcaemia

The causes of hypercalcaemia in the neonate are often distinct from those in older children and adults. This review will focus primarily on genetic causes of hypercalcaemia in neonates and young infants. Neonatal hypercalcaemia can be due to maternal or neonatal factors and can be divided into high or low PTH disorders (Table 1).

High serum PTH

Neonatal severe hyperparathyroidism

Neonatal severe hyperparathyroidism (NSHPT) (OMIM #239200) is a rare condition in which affected infants present with marked hypercalcaemia, skeletal demineralisation and failure to thrive, and can be fatal if untreated [11]. In 1993, inactivating mutations in the gene encoding the calcium-sensing receptor (CaSR) (Fig. 1) were identified to cause NSHPT, and familial hypocalciuric hypercalcaemia (FHH), a milder hypercalcaemic disorder [11]. In the majority of cases (~ 85%), NSHPT is caused by homozygous or compound heterozygous mutations, while heterozygous mutations cause FHH [12]. However, NSHPT has also been described in a small number of patients with heterozygous CaSR mutations, and it has been hypothesised that the clinical presentation of patients with heterozygous mutations is likely influenced by the location of the mutant residue, as well as intrauterine exposure to maternal calcium and vitamin D, and the presence of other CaSR polymorphisms that could act as genetic modifiers to influence activity of the receptor [12–14].

Individuals with NSHPT usually present within the first 2 weeks post-partum with serum calcium levels of > 4.5 mmol/L [12]. Serum calcium values are higher in patients with homozygous or compound heterozygous mutations and in individuals with nonsense or truncation mutations that severely impact receptor structure [12]. PTH values are high in $> 80\%$ of NSHPT patients [12]. The most commonly reported

symptoms in NSHPT are skeletal under-mineralisation and/or osteopenia, failure to thrive and hypotonia; while respiratory distress and lethargy are observed in a third of individuals, and dehydration, constipation and nausea/vomiting are observed in $< 20\%$ of NSHPT patients [12].

Parathyroidectomy is the preferred treatment for NSHPT, with bisphosphonates used to reduce hypercalcaemia prior to surgery [15]. Surgery should be performed early to avoid neuromotor restrictions, which may persist after otherwise successful surgery, and has been correlated with microcephaly and the duration or amplitude of hypercalcaemia [16]. The CaSR-positive allosteric modulator, cinacalcet, which enhances receptor sensitivity to extracellular calcium, has successfully reduced PTH and serum calcium in some NSHPT patients [15, 17]. The efficacy of cinacalcet is genotype dependent and may be ineffective in some patients [15, 17]. However, cinacalcet is likely to be increasingly utilised in NSHPT, due to its rapid effect on PTH levels and serum calcium [12].

Familial hypocalciuric hypercalcaemia type-1

FHH (familial hypocalciuric hypercalcaemia type-1 (FHH1), OMIM #145980) is an autosomal dominant disorder characterised by lifelong elevated serum calcium levels, high (approximately one-third) or inappropriately normal PTH concentrations and low kidney calcium excretion [12, 18, 19]. FHH1 is usually benign, and although its biochemical features have considerable overlap with typical primary hyperparathyroidism (PHPT), hypercalcaemia in FHH remains persistent following parathyroidectomy. It is therefore important to distinguish between typical PHPT and FHH to avoid unnecessary surgery [12, 18, 19]. This should involve a combination of genetic analysis, measurement of urinary calcium/creatinine ratio (UCCR) (cut-off of < 0.02 for FHH1) and examination of other symptoms, including kidney stones, fractures and cardiovascular events that are more common in PHPT [12, 18, 19].

FHH is rarely detected in infants, and the majority of patients with FHH are asymptomatic (~ 71%). However, some individuals have hypercalcaemic symptoms including constipation, fatigue, headaches, muscle cramps, nausea and vomiting, while other patients present with associated features including nephrocalcinosis/nephrolithiasis, osteoporosis and/or fractures and pancreatitis [12]. Treatment of symptomatic hypercalcaemia with cinacalcet has been reported in some adults and young children with FHH1 [20, 21]. However, the safety and efficacy have not been thoroughly examined in children, and the FDA has not approved its use in this age group [21].

In the last decade, the genetic heterogeneity of FHH has emerged, with mutations in the $\text{G}\alpha 11$ protein [22], by which CaSR signals, and the adaptor protein-2 sigma subunit

(AP2 σ) [23], which facilitates CaSR internalisation, demonstrated to cause FHH. AP2 σ mutations have been reported to cause a more severe FHH phenotype than those associated with CaSR mutations, with patients often exhibiting higher serum calcium values, symptomatic hypercalcaemia and additional features including recurrent pancreatitis [24]. Despite this, AP2 σ mutations were not identified in a cohort of NSHPT patients [25], which may be because homozygous mutations in AP2 σ are associated with lethality in mouse models [26], and therefore may not be tolerated in humans. Cinacalcet has been shown to normalise serum calcium and PTH and resolve hypercalcaemic symptoms (headaches, abdominal pain, vomiting, fatigue, musculoskeletal pain) in patients with *AP2S1* and *GNA11* mutations [27, 28].

Maternal hypocalcaemia

Foetal serum calcium levels are maintained at a higher concentration than maternal calcium concentrations to allow skeletal formation and mineralisation to take place [29]. Maternal hypoparathyroidism or maternal hypocalcaemia may cause secondary hyperparathyroidism in the neonate [30]. In the presence of severe maternal hypocalcaemia, foetal hypocalcaemia will develop, resulting in stimulation of the foetal parathyroid glands and development of hyperparathyroidism [31]. In severe cases, foetal skeletal demineralisation can lead to sub-periosteal bone resorption, osteitis fibrosa cystica, bowing of the long bones, fractures, low birth weight and foetal death [31]. In most cases, measuring maternal serum calcium and determining whether a familial or maternal history of hypercalcaemia exists are sufficient for diagnosis. The hypercalcaemia in the neonate is usually resolved within a few weeks [31], although some infants have been treated with vitamin D [32].

Low serum PTH

Nutritional causes

Hypercalcaemia can occur in the neonate or young infant following ingestion of excess calcium in enriched formulas. Low dietary phosphate can also cause hypercalcaemia, due to suppression of FGF23 or elevations in 1,25(OH)₂D₃. This is rare since the introduction of breast milk fortifiers, which contain 30–40 mg kg⁻¹ day⁻¹ of phosphate [3]. Phosphate depletion occurs more frequently in very low birth weight pre-term infants given inappropriately supplemented parenteral nutrition often leading to refeeding syndrome, characterised by hypokalemia, hypoglycaemia and hypophosphatemia [33]. In particular, hypophosphatemia has been associated with parenteral nutrition with a high amino acid content, and formulas with equimolar (0.75:1 to 1:1) Ca²⁺:PO₄ ratios, along with careful

monitoring of electrolytes including phosphorus have been recommended to prevent hypercalcaemia and hypophosphatemia [33, 34]. Hypophosphatemia has been described in some infants given correctly prepared formulas, and it has been suggested that bioavailability of phosphorus may be suboptimal in some infants in the context of gastrointestinal disease or tube feeding [35]. Formula change and/or phosphate supplementation improved hypophosphatemia in these infants [35].

Excessive vitamin D intake, either by the infant or the breast-feeding mother can lead to increased intestinal calcium and phosphate absorption, enhanced bone resorption, and consequently hypercalcaemia and hyperphosphatemia [6]. Rehydration therapy with furosemide usually resolves hypercalcaemia in these infants, although bisphosphonates have been used in patients in which 25(OH)D remained high [36].

Hypercalcaemia has been reported in some infants receiving enteral feeding formulas containing excess vitamin A. The metabolite of vitamin A, retinoic acid, can bind to receptors on osteoclasts and osteoblasts, resulting in increased bone resorption and decreased bone formation [6].

Jansen's metaphyseal chondrodysplasia

Jansen's metaphyseal chondrodysplasia (JMC, OMIM #156400) is an autosomal dominant disease characterised by short-limbed short stature, deformed, under-mineralised bones, chronic hypercalcaemia and hyperphosphaturia. Most patients have low or undetectable serum PTH levels and elevated serum markers of bone turnover [37].

JMC is very rare, with fewer than 30 reported cases to date [38]. It is caused by mutations in the receptor for PTH and PTHrP, parathyroid hormone 1 receptor (PTH1R) [39], a GPCR that is expressed in cells of bone and kidney. The majority of mutations arise *de novo*, although some familial cases have been described [40]. All reported mutations occur in three residue positions His223, Thr410 and Ile458 (located in transmembrane helices 2, 6 and 7, respectively), which are located in a bundle at the cytoplasmic face of the receptor [39, 41]. Structural models indicate these residues contribute to a network that controls the outward movements of the transmembrane helices, allowing formation of a cavity at which G proteins can engage with the cytoplasmic region of the receptor during activation [37]. Such a critical role for these residues in receptor activation is consistent with *in vitro* findings that JMC mutations are associated with ligand-independent constitutive activation of cAMP signalling [39]. This is despite reduced receptor cell surface expression.

JMC initially presents as a generalised skeletal dysplasia, but as patients age it becomes apparent that the metaphyses are preferentially affected, with progressive expansion and irregular ossification, resulting in short and bowed legs and short

hands with clubbed fingers [38, 40]. This can be explained by the very high expression of PTH1R in proliferating chondrocytes of the growth plates. Patients with JMC may also exhibit micrognathia, hypertelorism, high-arched palate, delayed tooth eruption or impaction and a sclerotic skull base [38]. Such growth abnormalities are often not apparent at birth and initial symptoms may present as difficulty in feeding, vomiting, dehydration or respiratory distress within the first few months of life [38, 42]. However, X-rays of infants with JMC show bony lesions comprising rachitic changes, radiolucency and irregularities of the metaphyses of the long bones [30].

The metaphyseal irregularities and skeletal hypomineralisation can be mistaken for hypophosphatemic rickets; however, the biochemical findings are inconsistent with this diagnosis [43]. Neonates with JMC have severe, but largely asymptomatic hypercalcaemia, hypophosphatemia, hyperphosphaturia, elevated circulating levels of 1,25-dihydroxyvitamin D₃, elevated serum alkaline phosphatase, and low or undetectable levels of PTH and PTH-related peptide (PTHrP) [44]. Serum calcium remains high throughout life but reduces with age [44]; however, PTH levels remain suppressed at or below the lower limit of the reference range [45].

Attempts to perform genotype-phenotype correlations have been made, though there are inconsistencies in their findings. Early studies indicated that patients with His223 mutations may have more severe hypercalcaemia. However, it is now recognised that there is considerable variability even within families [40, 44]. There is some evidence that the constitutive activity of the Thr410Arg mutant PTH1R is not as marked as for other receptor mutations, and clinical features in the affected family are less severe, including milder bone dysplasia and serum calcium and phosphate levels occasionally within the normal range [43]. However, it is difficult to confirm these correlations due to the paucity of JMC cases.

There are currently no effective treatments for JMC, although the use of bisphosphonates in older children to reduce hypercalcaemia has been reported [42, 46]. Recently, the effectiveness of an inverse agonist of the PTH1R was tested in a transgenic mouse model expressing the PTH1R-His223Arg mutation in osteoblast cells [37]. Mutant mice showed significant improvements in skeletal parameters including excess trabecular bone mass, bone marrow fibrosis and levels of bone turnover markers, although there was no effect on bone length [37]. Further studies of such PTH1R ligand analogues could reveal new treatment options for JMC patients.

Idiopathic infantile hypercalcaemia

Between the 1930s and 1950s, there was an increase in reported cases of hypercalcaemia in children by clinicians in the UK. Initial observations included failure to thrive,

hypercalcaemia and distinct facial features (described as “elf-in”). While the hypercalcaemia was transient in some, the facial abnormalities, developmental delay and mental retardation persisted [47]. In 1953, Lightwood and Stapleton suggested that a distinction should be made between those individuals with “syndromic” hypercalcaemia accompanied by distinct facial features and mental retardation, and those with classical features of hypercalcaemia, including thirst, dehydration and polyuria [47]. This latter milder form was termed idiopathic infantile hypercalcaemia (IIH, OMIM #143880), and the former named Williams-Beuren Syndrome [8] (see next section). The increased prevalence of IIH in the 1950s in the UK was linked to the high dose of vitamin D fortification in milk and cereals, an initiative that had begun to prevent rickets in the population [47]. An oversensitivity to vitamin D was suggested to be the cause of hypercalcaemia in those individuals with IIH [47].

IIH classically presents in the first year of life with typical symptoms of hypercalcaemia, including failure to thrive, weight loss, dehydration, polyuria, vomiting and lethargy [48]. Hypercalcaemia results from intestinal hyperabsorption [49] and is accompanied by suppressed intact PTH and hypercalciuria [8]. Nephrocalcinosis is also observed on kidney ultrasonography in infants from a few months of age [8]. Hypercalcaemia generally resolves before the age of three years, although nephrocalcinosis and persistent hypercalciuria can continue to be common [50]. If diagnosed early, the prognosis of IIH patients can be improved, and extent of nephrocalcinosis limited [50]. Individuals with IIH may have elevated levels of serum 1,25(OH)₂D₃, although some have inappropriately normal levels [48].

Although early studies had established an association with vitamin D supplementation, an explanation for this link was only provided in 2011 when researchers identified recessive mutations in the *CYP24A1* gene in several individuals with IIH [8]. *CYP24A1* encodes the cytochrome P450 enzyme 24-hydroxylase, which inactivates 1,25(OH)₂D₃ (Fig. 1) [48]. In this initial report, *CYP24A1* mutations were nonsense or missense and inherited in the homozygous or compound heterozygous state [8]. Subsequently, further mutations were identified that were always bi-allelic, although there is some evidence that heterozygous carriers have high normal serum calcium, increased 1,25(OH)₂D, and low levels of PTH [48, 51]. Functional analysis revealed the mutations identified in IIH patients led to complete loss of *CYP24A1* enzymatic activity [8]. Some *CYP24A1* inactivating mutations have been identified in adults with recurrent kidney stone disease and chronic kidney failure [52, 53], with only a subset known to have hypercalcaemia in childhood. Moreover, some *CYP24A1* mutations, which tend to be associated with milder hypercalcaemia, are present at a high frequency in the Caucasian population (4–20% on dbSNP), indicating that IIH may go undetected if not challenged by vitamin D

supplementation, resulting in increased lifetime risk of nephrocalcinosis and nephrolithiasis [54].

In 2016, mutations in a second gene, *SLC34A1*, which encodes the kidney proximal tubule sodium-phosphate co-transporter NaPi-IIa, were identified in patients with IIH [9]. Again, these mutations were autosomal recessive and led to inactivation of the NaPi-IIa protein [9]. This subset of patients not only have the classical symptoms of hypercalcaemia and suppressed PTH but also exhibit hypophosphatemia due to kidney phosphate wasting [8]. Functional expression of the IIH-associated mutant NaPi-IIa demonstrates that the transporter fails to traffic normally to the surface of cells due to intracellular retention, resulting in defective kidney proximal tubular phosphate reabsorption and hypophosphatemia [8]. Subsequently, the low levels of serum phosphate and FGF23 induce increases in *CYP27B1* expression and 1 α -hydroxylase activity; while inhibiting *CYP24A1* expression and 24-hydroxylase activity, which have the combined effect of increasing 1,25-(OH)₂D₃ and hypercalcaemia [8]. Mutations in *SLC34A1* have also been described in a consanguineous family with an affected individual presenting with renal Fanconi's syndrome, hypophosphatemic rickets, hypercalciuria and elevated 1,25(OH)₂D₃ levels [55], and in heterozygous adults with hypophosphatemia and urolithiasis [56]. The clinical biochemistry during infancy in these individuals was not reported, although the younger sister of the individual with Fanconi's syndrome and hypophosphatemic rickets had hypercalcaemia, suppressed PTH and elevated 1,25(OH)₂D₃ levels [55]. Thus, although hypercalcaemia may resolve within the first few years in most individuals, patients may develop other sequelae including nephrolithiasis later in life.

Williams-Beuren syndrome

Williams-Beuren syndrome, also known as Williams syndrome (OMIM #194050), is a rare genetic multisystem disorder that affects the cardiovascular, connective tissue and central nervous systems. It affects ~1 in 7500–10,000 live births [57, 58]. Although symptoms vary between cases, distinct (“elfin-like”) facial features including microcephaly, broad forehead, rounded cheeks, epicanthal folds, depressed nasal bridge, small mandible and prominent ears are usually present [59, 60]. Dental abnormalities including microdontia, hypoplastic enamel and upper and lower teeth that do not meet properly (malocclusion) can occur in up to 90% of cases and stellate patterns in the iris are common [60]. Many of the developmental defects including mental retardation and poor motor development observed in Williams syndrome are not detected until later in childhood. However, musculoskeletal abnormalities including depression of the breast bone (pectus excavatum), scoliosis or kyphosis are apparent earlier in childhood [60]. In neonates, low birth weight, respiratory distress,

feeding difficulties, recurrent vomiting, colic and diarrhoea are common, and two-thirds of infants are small for gestational age [30, 60]. Short stature remains a feature in individuals with Williams syndrome [60]. Soft tissue abnormalities including hernias and skin hyperelasticity, as well as hypotonia and chronic urinary tract infections are often observed in Williams syndrome [60]. Cardiovascular defects are the most common cause of death in Williams syndrome patients and are present in over 90% of affected neonates [58, 59]. Cardiac defects include pulmonary stenosis and supraventricular aortic stenosis, and patients have symptoms of fatigue, chest pains, dizziness and heart murmurs [59].

There are discrepancies in the reported frequency of hypercalcaemia in association with Williams syndrome, ranging from as low as 5% to up to 50% [60, 61]. The high serum calcium levels are usually resolved within the first few years but may recur during puberty [3]. Circulating calcitriol levels are elevated in some patients, and PTH levels are low [3]. Hypercalcaemia is frequently symptomatic with many infants presenting with dehydration, fatigue, abdominal pain and irritability [3, 61]. There is no consensus regarding the pathogenesis of hypercalcaemia, although decreased calcitonin production and abnormal vitamin D metabolism have been implicated [3, 30].

Williams-Beuren syndrome is a microdeletion disorder caused by the loss of 26–28 genes on 7q11.23 [61, 62]. Most cases occur spontaneously, although familial cases have been reported in which there is autosomal dominant inheritance [60]. Hemizygosity of the elastin gene (*ELN*) is seen in over 90% of cases and has been demonstrated to be responsible for the vascular and connective tissue defects in Williams syndrome [62, 63]. Deletion of the LIM kinase gene *LIMK1* has been reported to contribute to the visuo-spatial cognition problems associated with Williams syndrome [64]. Deletion of the other 24–26 genes on 7q11.23 is likely to be responsible for other symptoms observed in Williams syndrome patients, including hypercalcaemia. One candidate, the Williams syndrome transcription factor (WSTF), has been hypothesised to regulate vitamin D receptor trans-repression of the *CYP27B1* gene [3] (Fig. 1).

Several treatment options have been used for hypercalcaemia in IIH and Williams syndrome. Vitamin D supplementation must be stopped immediately in all cases and rehydration performed. Rehydration therapy combined with furosemide is often successful in reducing serum calcium in patients with Williams syndrome; however, some children are unresponsive and require further treatment [65]. Bisphosphonates have been used to treat hypercalcaemia in several cases of Williams syndrome [65, 66]. Serum calcium levels remained normal in these infants and adverse effects were not observed [65, 66]. A number of studies have demonstrated a low calcium diet is effective in treating hypercalcaemia in IIH and Williams syndrome, although this

must be closely monitored due to its potential to induce calcium deficiency and rickets [8, 61, 67]. Moreover, low calcium diet may not successfully normalise serum calcium and PTH levels [8]. Often, corticosteroids are used for the treatment of symptomatic hypercalcaemia as they can inhibit enteral calcium absorption and induce *CYP24A1* expression [48]. However, a study of adults with *CYP24A1* mutations showed corticosteroids fail to lower serum calcium levels, normalise PTH levels and decrease urinary calcium excretion in some individuals [52]. Use of corticosteroids should be short to avoid their well-documented side effects [67].

Descriptions of the successful use of calcitonin, which inhibits osteoclastic bone resorption and enhances kidney calcium excretion, have also been described to treat hypercalcaemia, in combination with thiazide diuretics to reduce hypercalciuria [68]. However, repeated administration of calcitonin leads to tachyphylaxis within 48 h, limiting its long-term use [67]. The administration of cellulose phosphate, which binds calcium with high affinity thereby inhibiting intestinal absorption, has also been described to successfully resolve hypercalcaemia in IH, although this treatment is not available in some countries [67].

Inborn errors of metabolism

Hypophosphatasia (OMIM #171760) is caused by inactivating mutations in the tissue non-specific isoenzyme of alkaline phosphatase (TNSALP) encoded by the *ALPL* gene [69]. TNSALP hydrolyses pyrophosphate phosphodiesterase to generate inorganic phosphate, which is required for hydroxyapatite formation and skeletal mineralisation [3, 70]. It can be detected biochemically as low serum ALP activity, with mutation analysis of *ALPL* providing confirmation [69].

Hypophosphatasia can present in various forms in neonates and infants and has a prevalence of 1:300,000 in Europe and 1:182,000 in Japan [70]. The most severe form, known as perinatal hypophosphatasia, is characterised by profound skeletal hypo-mineralisation [69]. Infantile hypophosphatasia presents before six months of age [70]. Affected newborns appear healthy, but develop poor feeding, inadequate weight gain, wide fontanels and rachitic deformities that can result in respiratory complications [69]. Hypercalcaemia can occur due to impaired skeletal calcium uptake. In those individuals that survive infancy, persistent rickets, bony craniosynostosis and muscle weakness can occur [69]. Until recently, survival from perinatal hypophosphatasia was rare; however, a recombinant enzyme replacement therapy, asfotase alfa, substantially improves bone mineralisation, respiratory function and survival in perinatal and infantile hypophosphatasia [71]. The severity of hypophosphatasia generally reflects the inheritance pattern of *ALPL* mutations, with autosomal recessive inheritance more common in perinatal and infantile cases [69].

Blue diaper syndrome or Drummond's syndrome (OMIM #211000) is so called as affected infants have inadequate intestinal tryptophan absorption, leading to excessive metabolism by intestinal bacteria and accumulation of indican, which gives urine a distinctive blue colour [72]. The syndrome was first described in 1964 in two siblings who presented with a blue discoloration of urine, along with hypercalcaemia and nephrocalcinosis [72]. Other symptoms include fever, irritability, constipation, poor appetite and failure to thrive. Some infants present with eye abnormalities including abnormal eye movements, hypoplasia of the optic disc and microcornea [73]. Although the blue discoloration of urine is often the first indication of the syndrome, this symptom has been reported in patients with faecal colonisation with *Pseudomonas aeruginosa* and urinary tract infections [74, 75]. Therefore, a diagnosis requires a thorough clinical evaluation including a detailed patient history and identification of characteristic symptoms to avoid misdiagnosis.

Blue diaper syndrome is extremely rare and therefore estimating incidence is difficult. The inheritance pattern is most likely autosomal recessive. Defects in several proteins that transport amino acids including tryptophan have been proposed, although no mutations in these genes have been identified. Recently, a male infant with blue diaper syndrome with a homozygous frameshift mutation in pro-protein convertase subtilisin/kexin type 1 (*PCSK1*) was described [76]. *PCSK1* encodes prohormone convertase 1/3, a serine endoprotease that is required for the processing of precursors of many hormones including insulin and glucagon-like peptide-1. Mutations in *PCSK1* have previously been associated with obesity and gastrointestinal disorders including malabsorptive diarrhoea [77, 78]. Notably, the boy described in this case did not have hypercalcaemia [76], and further genetic investigation is required to determine whether *PCSK1* mutations are important in other cases of blue diaper syndrome with hypercalcaemia.

Congenital glucose-galactose malabsorption is an autosomal recessive disorder caused by inactivating mutations in the *SLC5A1* gene that encodes the sodium-dependent glucose transporter-1 (SGLT-1), which is predominantly expressed in the intestinal brush-border membrane [79]. Glucose and galactose are produced by enzymatic breakdown of lactose from breast milk at the brush-border membrane, and are then transported by SGLT-1 into the enterocyte, before diffusion across the basolateral membrane via the facilitated carrier GLUT2 [79]. The low intracellular sodium concentration required to maintain these favourable gradients relies on a basolateral Na^+ - K^+ pump, resulting in net transport of sodium, sugar and water across the epithelium. Consequently, patients with inactivating mutations in SGLT-1 present with severe life-threatening watery diarrhoea dehydration and abdominal distension in the first weeks of life.

The majority of mutations in SGLT-1 are nonsense, frameshift or splice site, resulting in truncated proteins that are not expressed [79]. Missense mutations have been reported, which do not affect protein expression, but impair the transport ability of the protein [79, 80]. Hypercalcaemia occurs in ~20% of cases and can be accompanied by nephrocalcinosis and elevated $1,25(\text{OH})_2\text{D}_3$ [80]. Upregulation of epithelial calcium channels (TRPV6) and $1,25(\text{OH})_2\text{D}_3$ have been hypothesised to contribute to nephrocalcinosis and hypercalcaemia [80]. Restriction of glucose, galactose, sucrose and lactose from the diet rapidly resolves symptoms in most patients.

Another rare autosomal recessive disorder, congenital lactase deficiency, has a similar clinical presentation to glucose-galactose malabsorption [81]. Neonates frequently exhibit hypercalcaemia and nephrocalcinosis. Congenital lactase deficiency is caused by homozygous or compound heterozygous mutations in the gene for lactase (*LCT*). A lactose-free diet usually leads to rapid recovery.

Additional causes

Subcutaneous fat necrosis of the newborn is another rare cause of hypercalcaemia that normally arises within a few weeks of birth [3, 82]. The condition often occurs following traumatic birth and is characterised by painful, firm nodules over the body that are hypothesised to form following cold- or stress-induced injury to immature fat, resulting in necrosis and granulomatous infiltrate [82]. Subcutaneous fat necrosis can occur in newborns with hypoxic-ischemic encephalopathy treated with moderate therapeutic hypothermia [83]. Although subcutaneous fat necrosis usually self-resolves, the associated hypercalcaemia, caused by a combination of calcium release from necrotic tissue and excess calcitriol and prostaglandin E activity from the granulomatous reaction, can be fatal [3]. Hypercalcaemia associated with subcutaneous fat necrosis has been shown to respond to furosemide and glucocorticoid treatment, although an increased incidence of nephrocalcinosis may occur in these infants. Bisphosphonate treatment successfully resolved serum calcium levels and had a reduced risk of recurrent hypercalcaemia [84].

Hypercalcaemia has been reported in neonates with the kidney tubular disorder Bartter's syndrome. The affected infants had mutations in the sodium-potassium-chloride cotransporter NKCC2 (encoded by *SLC12A1*) and the potassium channel ROMK (encoded by *KCNJ1*) [85, 86]. Patients with this form of Bartter's, occasionally known as hyperprostaglandin E syndrome, have increased release of prostaglandin E_2 (PGE_2) in the plasma and urine. The basis of hypercalcaemia in these patients is uncertain, although elevated PGE_2 may contribute as studies have shown it can

stimulate bone resorption, increase PTH secretion and upregulate hydroxylation of 25-hydroxyvitamin D [86].

Hypercalciuria and/or hypercalcaemia can occur in children with the intrauterine growth retardation, metaphyseal dysplasia, adrenal hypoplasia congenita and genital anomalies IMAGE syndrome (OMIM #614732). Heterozygous mutations in the cyclin-dependent kinase inhibitor 1C (*CDKN1C*) gene have been identified in some cases, and inheritance may involve maternal imprinting [87]. As only a few cases have been reported, the cause of hypercalcaemia is unclear.

Hypercalcaemia may occur in association with a number of endocrine disorders including hyperthyroidism, hypothyroidism and adrenal insufficiency. Neonatal hyperthyroidism is usually associated with maternal Graves' disease but can occur in rare endocrine disorders including autosomal dominant non-autoimmune hyperthyroidism due to activating mutations in the TSH receptor gene, McCune-Albright syndrome due to activating mutations in the *GNAS* gene, encoding the G-protein alpha-s and mutations in the thyroid receptor beta gene. Mild hypercalcaemia has been reported in infants with congenital hypothyroidism. Treatment of these infants with levothyroxine increases circulating $1,25(\text{OH})_2\text{D}_3$ and hypercalciuria, contributing to hypercalcaemia [88]. In patients with adrenal insufficiency, hypercalcaemia may be related to reduced calcium reabsorption at the proximal tubule due to hypovolemia and consequent reduced glomerular filtration rate and/or due to increased 1α -hydroxylase activity [89]. Rare cases of PTHrP-secreting tumors have been reported in neonates. PTHrP acts on the PTH1R to cause hypercalcaemia. A number of other causes of hypercalcaemia have been reported in neonates and infants including medications (such as thiazides and lithium) and extremely rare disorders, which have been well described in a review from 2005 [90].

Key Summary Points

- Serum calcium levels are higher in neonates than older children and adults. Therefore age-appropriate normal ranges should be used.
- Transient hypercalcaemia may occur shortly after birth, caused by maternal hypocalcaemia.
- Accurate identification of the cause of hypercalcaemia may require combined assessment of the family history; biochemical parameters (serum calcium, phosphate, creatinine and albumin, PTH, vitamin D metabolites and urinary calcium, phosphate and creatinine); evaluation of physical features (to identify dysmorphism); and genetic analyses.
- As next-generation sequencing continues to improve, it is likely that further hypercalcaemia-associated genes will be

identified. This may yield new treatment avenues and continue to improve neonatal care.

Multiple choice questions (answers are provided following the reference list)

1. Neonatal severe hyperparathyroidism (NSHPT) and familial hypocalciuric hypercalcaemia (FHH) are:
 - a) Both caused by inactivating mutations in the CaSR gene only.
 - b) NSHPT is caused by inactivating mutations in the CaSR only; FHH is caused by inactivating mutations in the CaSR, *Gα11* and *AP2σ* genes.
 - c) NSHPT is caused by inactivating mutations in the CaSR, *Gα11* and *AP2σ* genes; FHH is caused by inactivating mutations in the CaSR gene only.
 - d) Both are caused by inactivating mutations in the CaSR, *Gα11* and *AP2σ* genes.
2. Jansen's metaphyseal chondrodysplasia is characterised by:
 - a) Short-limbed short stature, deformed, undermineralised bones, chronic hypercalcaemia and hypophosphaturia with elevated serum PTH levels and elevated serum markers of bone turnover.
 - b) Short-limbed short stature, deformed, undermineralised bones, chronic hypercalcaemia and hypophosphaturia with normal serum PTH levels and elevated serum markers of bone turnover.
 - c) Short-limbed short stature, deformed, undermineralised bones, transient hypercalcaemia and hyperphosphaturia with normal serum PTH levels and elevated serum markers of bone turnover.
 - d) Short-limbed short stature, deformed, undermineralised bones, chronic hypercalcaemia and hyperphosphaturia with normal serum PTH levels and elevated serum markers of bone turnover.
3. Idiopathic infantile hypercalcaemia (IIH) is caused by mutations in:
 - a) The *CYP27B1* gene, encoding 1α -hydroxylase, which converts 25-hydroxyvitamin D₃ to active 1,25(OH)₂D₃.
 - b) The *CYP24A1* gene, encoding 24-hydroxylase, which inactivates 1,25(OH)₂D₃.
 - c) The *CYP2R1* gene, encoding 25-hydroxylase, which converts vitamin D to 25-hydroxyvitamin D₃.
 - d) The *CYP24A1* and *CYP27B1* genes.
- e) The *CYP2R1*, *CYP24A1* and *CYP27B1* genes.
4. In Williams syndrome the reported frequency of hypercalcaemia is:
 - a) >50%, is often symptomatic, may resolve within the first few years, but may recur during puberty.
 - b) <50%, is often symptomatic, may resolve within the first few years, but may recur during puberty.
 - c) <50%, is often asymptomatic, and always resolves within the first few years, with no recurrence.
 - d) >50%, is often asymptomatic, and always resolves within the first few years, with no recurrence.
5. Which of these causes of hypercalcaemia is characterised by poor feeding, rachitic deformities that can result in respiratory complications, persistent rickets, bony craniosynostosis and is associated with mutations in the *ALPL* gene:
 - a) Jansen's metaphyseal chondrodysplasia
 - b) William's syndrome
 - c) Hypophosphatasia
 - d) Blue diaper syndrome
 - e) Subcutaneous fat necrosis of the newborn

Funding The author acknowledges support from an Academy of Medical Sciences Springboard Award (Ref: SBF004|1034), which is supported by the British Heart Foundation, Diabetes UK, the Global Challenges Research Fund, the Government Department of Business, Energy and Industrial Strategy and the Wellcome Trust.

Declarations

Conflict of interest The authors declare no conflict of interest.

Open Access This article is licensed under a Creative Commons Attribution 4.0 International License, which permits use, sharing, adaptation, distribution and reproduction in any medium or format, as long as you give appropriate credit to the original author(s) and the source, provide a link to the Creative Commons licence, and indicate if changes were made. The images or other third party material in this article are included in the article's Creative Commons licence, unless indicated otherwise in a credit line to the material. If material is not included in the article's Creative Commons licence and your intended use is not permitted by statutory regulation or exceeds the permitted use, you will need to obtain permission directly from the copyright holder. To view a copy of this licence, visit <http://creativecommons.org/licenses/by/4.0/>.

References

1. Roizen JD, Shah V, Levine MA, Carlow DC (2013) Determination of reference intervals for serum total calcium in the vitamin D-

- replete pediatric population. *J Clin Endocrinol Metab* 98:E1946–E1950
2. Stokes VJ, Nielsen MF, Hannan FM, Thakker RV (2017) Hypercalcemic disorders in children. *J Bone Miner Res* 32:2157–2170
 3. Lietman SA, Germain-Lee EL, Levine MA (2010) Hypercalcemia in children and adolescents. *Curr Opin Pediatr* 22:508–515
 4. Kovacs CS (2000) In: Feingold KR, Anawalt B, Boyce A, Chrousos G, de Herder WW, Dungan K, Grossman A, Hershman JM, Hofland J, Kalsas G, Koch C, Kopp P, Korbonits M, McLachlan R, Morley JE, New M, Purnell J, Singer F, Stratakis CA, Trencle DL, Wilson DP (eds) *Calcium and phosphate metabolism and related disorders during pregnancy and lactation*. Endotext, South Dartmouth, MA
 5. Tsang RC, Strub R, Brown DR, Steichen J, Hartman C, Chen IW (1976) Hypomagnesemia in infants of diabetic mothers: perinatal studies. *J Pediatr* 89:115–119
 6. Auron A, Alon US (2018) Hypercalcemia: a consultant's approach. *Pediatr Nephrol* 33:1475–1488
 7. Quarles LD (2008) Endocrine functions of bone in mineral metabolism regulation. *J Clin Invest* 118:3820–3828
 8. Schlingmann KP, Kaufmann M, Weber S, Irwin A, Goos C, John U, Misselwitz J, Klaus G, Kuwertz-Broking E, Fehrenbach H, Wingen AM, Guran T, Hoenderop JG, Bindels RJ, Prosser DE, Jones G, Konrad M (2011) Mutations in *CYP24A1* and idiopathic infantile hypercalcemia. *N Engl J Med* 365:410–421
 9. Schlingmann KP, Ruminska J, Kaufmann M, Dursun I, Patti M, Kranz B, Pronicka E, Ciara E, Akcay T, Bulus D, Cornelissen EA, Gawlik A, Sikora P, Patzer L, Galiano M, Boyadzhiev V, Dumic M, Vivante A, Kleta R, Dekel B, Levchenko E, Bindels RJ, Rust S, Forster IC, Hernando N, Jones G, Wagner CA, Konrad M (2016) Autosomal-Recessive Mutations in *SLC34A1* Encoding Sodium-Phosphate Cotransporter 2A Cause Idiopathic Infantile Hypercalcemia. *J Am Soc Nephrol* 27:604–614
 10. Kovacs CS, Lanske B, Hunzelman JL, Guo J, Karaplis AC, Kronenberg HM (1996) Parathyroid hormone-related peptide (PTHrP) regulates fetal-placental calcium transport through a receptor distinct from the PTH/PTHrP receptor. *Proc Natl Acad Sci U S A* 93:15233–15238
 11. Pollak MR, Brown EM, Chou YH, Hebert SC, Marx SJ, Steinmann B, Levi T, Seidman CE, Seidman JG (1993) Mutations in the human $\text{Ca}(2+)$ -sensing receptor gene cause familial hypocalciuric hypercalcemia and neonatal severe hyperparathyroidism. *Cell* 75:1297–1303
 12. Gorvin CM (2019) Molecular and clinical insights from studies of calcium-sensing receptor mutations. *J Mol Endocrinol* 63:R1–R16
 13. Reh CM, Hendy GN, Cole DE, Jeandron DD (2011) Neonatal hyperparathyroidism with a heterozygous calcium-sensing receptor (CASR) R185Q mutation: clinical benefit from cinacalcet. *J Clin Endocrinol Metab* 96:E707–E712
 14. Toke J, Czirjak G, Patocs A, Enyedi B, Gergics P, Csakvary V, Enyedi P, Toth M (2007) Neonatal severe hyperparathyroidism associated with a novel de novo heterozygous R551K inactivating mutation and a heterozygous A986S polymorphism of the calcium-sensing receptor gene. *Clin Endocrinol* 67:385–392
 15. Mayr B, Schnabel D, Dorr HG, Schoffl C (2016) Genetics in endocrinology: gain and loss of function mutations of the calcium-sensing receptor and associated proteins: current treatment concepts. *Eur J Endocrinol* 174:R189–R208
 16. Marx SJ, Sinaii N (2020) Neonatal severe hyperparathyroidism: novel insights from calcium, PTH, and the CASR gene. *J Clin Endocrinol Metab* 105:1061–1078
 17. Sun X, Huang L, Wu J, Tao Y, Yang F (2018) Novel homozygous inactivating mutation of the calcium-sensing receptor gene in neonatal severe hyperparathyroidism responding to cinacalcet therapy: A case report and literature review. *Medicine (Baltimore)* 97:e13128
 18. Eastell R, Brandi ML, Costa AG, D'Amour P, Shoback DM, Thakker RV (2014) Diagnosis of asymptomatic primary hyperparathyroidism: proceedings of the Fourth International Workshop. *J Clin Endocrinol Metab* 99:3570–3579
 19. Christensen SE, Nissen PH, Vestergaard P, Heickendorff L, Brixen K, Mosekilde L (2008) Discriminative power of three indices of renal calcium excretion for the distinction between familial hypocalciuric hypercalcaemia and primary hyperparathyroidism: a follow-up study on methods. *Clin Endocrinol* 69:713–720
 20. Alon US, VandeVoorde RG (2010) Beneficial effect of cinacalcet in a child with familial hypocalciuric hypercalcemia. *Pediatr Nephrol* 25:1747–1750
 21. Marx SJ (2017) Calcimimetic use in familial hypocalciuric hypercalcemia—a perspective in endocrinology. *J Clin Endocrinol Metab* 102:3933–3936
 22. Nesbit MA, Hannan FM, Howles SA, Babinsky VN, Head RA, Cranston T, Rust N, Hobbs MR, Heath H 3rd, Thakker RV (2013) Mutations affecting G-protein subunit $\alpha 11$ in hypercalcemia and hypocalcemia. *N Engl J Med* 368:2476–2486
 23. Nesbit MA, Hannan FM, Howles SA, Reed AA, Cranston T, Thakker CE, Gregory L, Rimmer AJ, Rust N, Graham U, Morrison PJ, Hunter SJ, Whyte MP, McVean G, Buck D, Thakker RV (2013) Mutations in *AP2S1* cause familial hypocalciuric hypercalcemia type 3. *Nat Genet* 45:93–97
 24. Hannan FM, Howles SA, Rogers A, Cranston T, Gorvin CM, Babinsky VN, Reed AA, Thakker CE, Bockenbauer D, Brown RS, Connell JM, Cook J, Darzy K, Ehtisham S, Graham U, Hulst T, Hunter SJ, Izatt L, Kumar D, McKenna MJ, McKnight JA, Morrison PJ, Mughal MZ, O'Halloran D, Pearce SH, Porteous ME, Rahman M, Richardson T, Robinson R, Scheers I, Siddique H, Van't Hoff WG, Wang T, Whyte MP, Nesbit MA, Thakker RV (2015) Adaptor protein-2 sigma subunit mutations causing familial hypocalciuric hypercalcaemia type 3 (FHH3) demonstrate genotype-phenotype correlations, codon bias and dominant-negative effects. *Hum Mol Genet* 24:5079–5092
 25. Rogers A, Nesbit MA, Hannan FM, Howles SA, Gorvin CM, Cranston T, Allgrove J, Bevan JS, Bano G, Brain C, Datta V, Grossman AB, Hodgson SV, Izatt L, Millar-Jones L, Pearce SH, Robertson L, Selby PL, Shine B, Snape K, Warner J, Thakker RV (2014) Mutational analysis of the adaptor protein 2 sigma subunit (*AP2S1*) gene: search for autosomal dominant hypocalcemia type 3 (ADH3). *J Clin Endocrinol Metab* 99:E1300–E1305
 26. Gorvin CM, Rogers A, Stewart M, Paudyal A, Hough TA, Teboul L, Wells S, Brown SD, Cox RD, Thakker RV (2017) N-ethyl-N-nitrosourea-induced adaptor protein 2 sigma subunit 1 (*Ap2s1*) mutations establish *Ap2s1* loss-of-function mice. *J Bone Miner Res* 32:32–41
 27. Gorvin CM, Hannan FM, Cranston T, Valta H, Makitie O, Schalin-Jantti C, Thakker RV (2018) Cinacalcet rectifies hypercalcemia in a patient with familial hypocalciuric hypercalcemia type 2 (FHH2) caused by a germline loss-of-function *Galpha11* mutation. *J Bone Miner Res* 33:32–41
 28. Howles SA, Hannan FM, Babinsky VN, Rogers A, Gorvin CM, Rust N, Richardson T, McKenna MJ, Nesbit MA, Thakker RV (2016) Cinacalcet for symptomatic hypercalcemia caused by *AP2S1* mutations. *N Engl J Med* 374:1396–1398
 29. Suzuki Y, Chitayat D, Sawada H, Deardorff MA, McLaughlin HM, Begtrup A, Millar K, Harrington J, Chong K, Roifman M, Grand K, Tominaga M, Takada F, Shuster S, Obara M, Mutoh H, Kushima R, Nishimura G (2018) TRPV6 variants interfere with maternal-fetal calcium transport through the placenta and cause transient neonatal hyperparathyroidism. *Am J Hum Genet* 102:1104–1114
 30. Rodd C, Goodyer P (1999) Hypercalcemia of the newborn: etiology, evaluation, and management. *Pediatr Nephrol* 13:542–547

31. Khan AA, Clarke B, Rejnmark L, Brandi ML (2019) Management of endocrine disease: Hypoparathyroidism in pregnancy: review and evidence-based recommendations for management. *Eur J Endocrinol* 180:R37–R44
32. Demirel N, Aydin M, Zenciroglu A, Okumus N, Cetinkaya S, Yildiz YT, Ipek MS (2009) Hyperparathyroidism secondary to maternal hypoparathyroidism and vitamin D deficiency: an uncommon cause of neonatal respiratory distress. *Ann Trop Paediatr* 29: 149–154
33. Ross JR, Finch C, Ebeling M, Taylor SN (2013) Refeeding syndrome in very-low-birth-weight intrauterine growth-restricted neonates. *J Perinatol* 33:717–720
34. Mulla S, Stirling S, Cowey S, Close R, Pullan S, Howe R, Radbone L, Clarke P (2017) Severe hypercalcaemia and hypophosphataemia with an optimised preterm parenteral nutrition formulation in two epochs of differing phosphate supplementation. *Arch Dis Child Fetal Neonatal Ed* 102:F451–F455
35. Eswarakumar AS, Ma NS, Ward LM, Backeljauw P, Wasserman H, Weber DR, DiMeglio LA, Imel EA, Gagne J, Cody D, Zimakas P, Topor LS, Agrawal S, Calabria A, Tebben P, Faircloth RS, Gordon R, Casey L, Carpenter TO (2020) Long-term follow-up of hypophosphatemic bone disease associated with elemental formula use: sustained correction of bone disease after formula change or phosphate supplementation. *Clin Pediatr (Phila)* 59:1080–1085
36. Bilbao NA (2017) Vitamin D toxicity in young breastfed infants: report of 2 Cases. *Glob Pediatr Health* 4:2333794X17731695
37. Noda H, Guo J, Khatri A, Dean T, Reyes M, Armanini M, Brooks DJ, Martins JS, Schipani E, Bouxsein ML, Demay MB, Potts JT Jr, Juppner H, Gardella TJ (2020) An inverse agonist ligand of the PTH receptor partially rescues skeletal defects in a mouse model of Jansen's metaphyseal chondrodysplasia. *J Bone Miner Res* 35: 540–549
38. Gabbett MT, Jeavons CJ, Gray PH (2020) Severe hypertension—an infantile feature of Jansen metaphyseal chondrodysplasia? *Am J Med Genet A* 182:768–772
39. Schipani E, Kruse K, Juppner H (1995) A constitutively active mutant PTH-PTHrP receptor in Jansen-type metaphyseal chondrodysplasia. *Science* 268:98–100
40. Nampoothiri S, Fernandez-Rebollo E, Yesodharan D, Gardella TJ, Rush ET, Langman CB, Juppner H (2016) Jansen metaphyseal chondrodysplasia due to heterozygous H223R-PTH1R mutations with or without overt hypercalcemia. *J Clin Endocrinol Metab* 101:4283–4289
41. Schipani E, Langman CB, Parfitt AM, Jensen GS, Kikuchi S, Kooh SW, Cole WG, Juppner H (1996) Constitutively activated receptors for parathyroid hormone and parathyroid hormone-related peptide in Jansen's metaphyseal chondrodysplasia. *N Engl J Med* 335:708–714
42. Schipani E, Langman C, Hunzelman J, Le Merrer M, Loke KY, Dillon MJ, Silve C, Juppner H (1999) A novel parathyroid hormone (PTH)/PTH-related peptide receptor mutation in Jansen's metaphyseal chondrodysplasia. *J Clin Endocrinol Metab* 84: 3052–3057
43. Bastepe M, Raas-Rothschild A, Silver J, Weissman I, Wientroub S, Juppner H, Gillis D (2004) A form of Jansen's metaphyseal chondrodysplasia with limited metabolic and skeletal abnormalities is caused by a novel activating parathyroid hormone (PTH)/PTH-related peptide receptor mutation. *J Clin Endocrinol Metab* 89: 3595–3600
44. Saito H, Noda H, Gatault P, Bockenbauer D, Loke KY, Hiort O, Silve C, Sharwood E, Martin RM, Dillon MJ, Gillis D, Harris M, Rao SD, Pauli RM, Gardella TJ, Juppner H (2018) Progression of mineral ion abnormalities in patients with Jansen metaphyseal chondrodysplasia. *J Clin Endocrinol Metab* 103:2660–2669
45. Parfitt AM, Schipani E, Rao DS, Kupin W, Han ZH, Juppner H (1996) Hypercalcemia due to constitutive activity of the parathyroid hormone (PTH)/PTH-related peptide receptor: comparison with primary hyperparathyroidism. *J Clin Endocrinol Metab* 81:3584–3588
46. Onuchic L, Ferraz-de-Souza B, Mendonca BB, Correa PH, Martin RM (2012) Potential effects of alendronate on fibroblast growth factor 23 levels and effective control of hypercalciuria in an adult with Jansen's metaphyseal chondrodysplasia. *J Clin Endocrinol Metab* 97:1098–1103
47. Berdon WE, Clarkson PM, Teele RL (2011) Williams-Beuren syndrome: historical aspects. *Pediatr Radiol* 41:262–266
48. Schlingmann KP, Cassar W, Konrad M (2018) Juvenile onset IIIH and CYP24A1 mutations. *Bone Rep* 9:42–46
49. Barr DG, Forfar JO (1969) Oral calcium-loading test in infancy, with particular reference to idiopathic hypercalcaemia. *Br Med J* 1: 477–480
50. Pronicka E, Rowinska E, Kulczycka H, Lukaszkiwicz J, Lorenc R, Janas R (1997) Persistent hypercalciuria and elevated 25-hydroxyvitamin D3 in children with infantile hypercalcaemia. *Pediatr Nephrol* 11:2–6
51. Molin A, Baudoin R, Kaufmann M, Souberbielle JC, Ryckewaert A, Vantyghem MC, Eckart P, Bacchetta J, Deschenes G, Kesler-Roussey G, Coudray N, Richard N, Wraich M, Bonafiglia Q, Tiulpakov A, Jones G, Kottler ML (2015) CYP24A1 mutations in a cohort of hypercalcemic patients: evidence for a recessive trait. *J Clin Endocrinol Metab* 100:E1343–E1352
52. Colussi G, Ganon L, Penco S, De Ferrari ME, Ravera F, Querques M, Primignani P, Holtzman EJ, Dinour D (2014) Chronic hypercalcaemia from inactivating mutations of vitamin D 24-hydroxylase (CYP24A1): implications for mineral metabolism changes in chronic renal failure. *Nephrol Dial Transplant* 29:636–643
53. Dinour D, Beckerman P, Ganon L, Tordjman K, Eisenstein Z, Holtzman EJ (2013) Loss-of-function mutations of CYP24A1, the vitamin D 24-hydroxylase gene, cause long-standing hypercalciuric nephrolithiasis and nephrocalcinosis. *J Urol* 190:552–557
54. Nesterova G, Malicdan MC, Yasuda K, Sakaki T, Vilboux T, Ciccone C, Horst R, Huang Y, Golas G, Introne W, Huizing M, Adams D, Boerkoel CF, Collins MT, Gahl WA (2013) 1,25-(OH)2D-24 Hydroxylase (CYP24A1) deficiency as a cause of nephrolithiasis. *Clin J Am Soc Nephrol* 8:649–657
55. Magen D, Berger L, Coady MJ, Ilivitzki A, Militianu D, Tieder M, Selig S, Lapointe JY, Zelikovic I, Skorecki K (2010) A loss-of-function mutation in NaPi-IIa and renal Fanconi's syndrome. *N Engl J Med* 362:1102–1109
56. Prie D, Huart V, Bakouh N, Planelles G, Dellis O, Gerard B, Hulin P, Benque-Blanchet F, Silve C, Grandchamp B, Friedlander G (2002) Nephrolithiasis and osteoporosis associated with hypophosphatemia caused by mutations in the type 2a sodium-phosphate cotransporter. *N Engl J Med* 347:983–991
57. Stromme P, Bjornstad PG, Ramstad K (2002) Prevalence estimation of Williams syndrome. *J Child Neurol* 17:269–271
58. Pober BR (2010) Williams-Beuren syndrome. *N Engl J Med* 362: 239–252
59. Collins RT 2nd (2013) Cardiovascular disease in Williams syndrome. *Circulation* 127:2125–2134
60. Amenta S, Sofocleous C, Kolialexi A, Thomaidis L, Giouroukos S, Karavitakis E, Mavrou A, Kitsiou S, Kanavakis E, Fryssira H (2005) Clinical manifestations and molecular investigation of 50 patients with Williams syndrome in the Greek population. *Pediatr Res* 57:789–795
61. Sindhar S, Lugo M, Levin MD, Danback JR, Brink BD, Yu E, Dietzen DJ, Clark AL, Purgert CA, Waxler JL, Elder RW, Pober BR, Kozel BA (2016) Hypercalcemia in patients with Williams-Beuren syndrome. *J Pediatr* 178(254-260):e254
62. Ewart AK, Morris CA, Atkinson D, Jin W, Sternes K, Spallone P, Stock AD, Leppert M, Keating MT (1993) Hemizygoty at the

- elastin locus in a developmental disorder, Williams syndrome. *Nat Genet* 5:11–16
63. Nickerson E, Greenberg F, Keating MT, McCaskill C, Shaffer LG (1995) Deletions of the elastin gene at 7q11.23 occur in approximately 90% of patients with Williams syndrome. *Am J Hum Genet* 56:1156–1161
 64. Frangiskakis JM, Ewart AK, Morris CA, Mervis CB, Bertrand J, Robinson BF, Klein BP, Ensing GJ, Everett LA, Green ED, Proschel C, Gutowski NJ, Noble M, Atkinson DL, Odelberg SJ, Keating MT (1996) LIM-kinase1 hemizyosity implicated in impaired visuospatial constructive cognition. *Cell* 86:59–69
 65. Sanjad SA, Aoun B, Yammine H, Bassyouni A, Karam PE (2018) Pamidronate rescue therapy for hypercalcemia in a child with Williams syndrome. *Front Endocrinol (Lausanne)* 9:240
 66. Cagle AP, Waguespack SG, Buckingham BA, Shankar RR, Dimeglio LA (2004) Severe infantile hypercalcemia associated with Williams syndrome successfully treated with intravenously administered pamidronate. *Pediatrics* 114:1091–1095
 67. Huang J, Coman D, McTaggart SJ, Burke JR (2006) Long-term follow-up of patients with idiopathic infantile hypercalcaemia. *Pediatr Nephrol* 21:1676–1680
 68. Alon U, Berkowitz D, Berant M (1992) Idiopathic infantile hypercalcemia: rapid response to treatment with calcitonin. *Child Nephrol Urol* 12:47–50
 69. Whyte MP, Zhang F, Wenkert D, McAlister WH, Mack KE, Benigno MC, Coburn SP, Wagy S, Griffin DM, Ericson KL, Mumm S (2015) Hypophosphatasia: validation and expansion of the clinical nosology for children from 25 years experience with 173 pediatric patients. *Bone* 75:229–239
 70. Castells L, Cassanello P, Muniz F, de Castro MJ, Couce ML (2018) Neonatal lethal hypophosphatasia: a case report and review of literature. *Medicine (Baltimore)* 97:e13269
 71. Whyte MP, Rockman-Greenberg C, Ozono K, Riese R, Moseley S, Melian A, Thompson DD, Bishop N, Hofmann C (2016) Asfotase alfa treatment improves survival for perinatal and infantile hypophosphatasia. *J Clin Endocrinol Metab* 101:334–342
 72. Drummond KN, Michael AF, Ulstrom RA, Good RA (1964) The blue diaper syndrome: familial hypercalcemia with nephrocalcinosis and indicanuria; a new familial disease, with definition of the metabolic abnormality. *Am J Med* 37:928–948
 73. Chen Y, Wu L, Xiong Q (1991) The ocular abnormalities of blue diaper syndrome. *Metab Pediatr Syst Ophthalmol* (1985) 14:73–75
 74. Libit SA, Ulstrom RA, Doeden D (1972) Fecal pseudomonas aeruginosa as a cause of the blue diaper syndrome. *J Pediatr* 81: 546–547
 75. Lin CH, Huang HT, Chien CC, Tzeng DS, Lung FW (2008) Purple urine bag syndrome in nursing homes: ten elderly case reports and a literature review. *Clin Interv Aging* 3:729–734
 76. Distelmaier F, Herebian D, Atasever C, Beck-Woedl S, Mayatepek E, Strom TM, Haack TB (2018) Blue diaper syndrome and PCSK1 mutations. *Pediatrics* 141:S501–S505
 77. Jackson RS, Creemers JW, Farooqi IS, Raffin-Sanson ML, Varro A, Dockray GJ, Holst JJ, Brubaker PL, Corvol P, Polonsky KS, Ostrega D, Becker KL, Bertagna X, Hutton JC, White A, Dattani MT, Hussain K, Middleton SJ, Nicole TM, Milla PJ, Lindley KJ, O’Rahilly S (2003) Small-intestinal dysfunction accompanies the complex endocrinopathy of human proprotein convertase 1 deficiency. *J Clin Invest* 112:1550–1560
 78. Renstrom F, Payne F, Nordstrom A, Brito EC, Rolandsson O, Hallmans G, Barroso I, Nordstrom P, Franks PW, GIANT Consortium (2009) Replication and extension of genome-wide association study results for obesity in 4923 adults from northern Sweden. *Hum Mol Genet* 18:1489–1496
 79. Wright EM, Turk E, Martin MG (2002) Molecular basis for glucose-galactose malabsorption. *Cell Biochem Biophys* 36:115–121
 80. Wang W, Wang L, Ma M (2020) Literature review on congenital glucose-galactose malabsorption from 2001 to 2019. *J Paediatr Child Health* 56:1779–1784
 81. Saarela T, Simila S, Koivisto M (1995) Hypercalcemia and nephrocalcinosis in patients with congenital lactase deficiency. *J Pediatr* 127:920–923
 82. Dudink J, Walther FJ, Beekman RP (2003) Subcutaneous fat necrosis of the newborn: hypercalcaemia with hepatic and atrial myocardial calcification. *Arch Dis Child Fetal Neonatal Ed* 88:F343–F345
 83. Strohm B, Hobson A, Brocklehurst P, Edwards AD, Azzopardi D, UK TOBY Cooling Register (2011) Subcutaneous fat necrosis after moderate therapeutic hypothermia in neonates. *Pediatrics* 128: e450–e452
 84. Chesover AD, Harrington J, Mahmud FH (2021) Pamidronate as first-line treatment of hypercalcemia in neonatal subcutaneous fat necrosis: a case series. *Paediatr Child Health* 26:e52–e56
 85. Sharma A, Linshaw MA (2011) A novel compound heterozygous ROMK mutation presenting as late onset Bartter syndrome associated with nephrocalcinosis and elevated 1,25(OH)₂ vitamin D levels. *Clin Exp Nephrol* 15:572–576
 86. Li D, Tian L, Hou C, Kim CE, Hakonarson H, Levine MA (2016) Association of mutations in SLC12A1 encoding the NKCC2 cotransporter with neonatal primary hyperparathyroidism. *J Clin Endocrinol Metab* 101:2196–2200
 87. Bergada I, Del Rey G, Lapunzina P, Bergada C, Fellous M, Copelli S (2005) Familial occurrence of the IMAGE association: additional clinical variants and a proposed mode of inheritance. *J Clin Endocrinol Metab* 90:3186–3190
 88. Tau C, Garabedian M, Farriaux JP, Czernichow P, Pomarede R, Balsan S (1986) Hypercalcemia in infants with congenital hypothyroidism and its relation to vitamin D and thyroid hormones. *J Pediatr* 109:808–814
 89. Ahn SW, Kim TY, Lee S, Jeong JY, Shim H, Han YM, Choi KE, Shin SJ, Yoon HE (2016) Adrenal insufficiency presenting as hypercalcemia and acute kidney injury. *Int Med Case Rep J* 9:223–226
 90. Jacobs TP, Bilezikian JP (2005) Clinical review: rare causes of hypercalcemia. *J Clin Endocrinol Metab* 90:6316–6322

Multiple choice answers 1. b; 2. d; 3. b; 4. b; 5. c

Publisher’s note Springer Nature remains neutral with regard to jurisdictional claims in published maps and institutional affiliations.