

## BIFoR FACE

Mackenzie, A. Rob; Krause, Stefan; Hart, Kris M.; Thomas, Richard M.; Blaen, Phillip J.; Hamilton, R. Liz; Curioni, Giulio; Quick, Susan E.; Kourmouli, Angeliki; Hannah, David M.; Comer-warner, Sophie A.; Brekenfeld, Nicolai; Ullah, Sami; Press, Malcolm C.

DOI:

[10.1002/hyp.14096](https://doi.org/10.1002/hyp.14096)

License:

Creative Commons: Attribution (CC BY)

*Document Version*

Publisher's PDF, also known as Version of record

*Citation for published version (Harvard):*

Mackenzie, AR, Krause, S, Hart, KM, Thomas, RM, Blaen, PJ, Hamilton, RL, Curioni, G, Quick, SE, Kourmouli, A, Hannah, DM, Comer-warner, SA, Brekenfeld, N, Ullah, S & Press, MC 2021, 'BIFoR FACE: water–soil–vegetation–atmosphere data from a temperate deciduous forest catchment, including under elevated CO<sub>2</sub>', *Hydrological Processes*, vol. 35, no. 3, e14096. <https://doi.org/10.1002/hyp.14096>

[Link to publication on Research at Birmingham portal](#)

### General rights

Unless a licence is specified above, all rights (including copyright and moral rights) in this document are retained by the authors and/or the copyright holders. The express permission of the copyright holder must be obtained for any use of this material other than for purposes permitted by law.

- Users may freely distribute the URL that is used to identify this publication.
- Users may download and/or print one copy of the publication from the University of Birmingham research portal for the purpose of private study or non-commercial research.
- User may use extracts from the document in line with the concept of 'fair dealing' under the Copyright, Designs and Patents Act 1988 (?)
- Users may not further distribute the material nor use it for the purposes of commercial gain.

Where a licence is displayed above, please note the terms and conditions of the licence govern your use of this document.

When citing, please reference the published version.

### Take down policy





While the University of Birmingham exercises care and attention in making items available there are rare occasions when an item has been uploaded in error or has been deemed to be commercially or otherwise sensitive.

If you believe that this is the case for this document, please contact [UBIRA@lists.bham.ac.uk](mailto:UBIRA@lists.bham.ac.uk) providing details and we will remove access to the work immediately and investigate.

**RESEARCH AND OBSERVATORY CATCHMENTS: THE  
LEGACY AND THE FUTURE**

WILEY

**BIFoR FACE: Water–soil–vegetation–atmosphere data from a  
temperate deciduous forest catchment, including under  
elevated CO<sub>2</sub>**

A. Rob MacKenzie<sup>1,2</sup>  | Stefan Krause<sup>1,2</sup>  | Kris M. Hart<sup>1</sup> |  
 Richard M. Thomas<sup>1,3</sup> | Phillip J. Blaen<sup>1,4</sup> | R. Liz Hamilton<sup>1,2</sup> |  
 Giulio Curioni<sup>1,2</sup> | Susan E. Quick<sup>1,2</sup>  | Angeliki Kourmouli<sup>1,2</sup> |  
 David M. Hannah<sup>1,2</sup>  | Sophie A. Comer-Warner<sup>1,2</sup> | Nicolai Brekenfeld<sup>1,2</sup> |  
 Sami Ullah<sup>1,2</sup> | Malcolm C. Press<sup>1,5</sup>

<sup>1</sup>Birmingham Institute of Forest Research,  
University of Birmingham, Birmingham, UK

<sup>2</sup>School of Geography, Earth and  
Environmental Science, University of  
Birmingham, Birmingham, UK

<sup>3</sup>Now at Big Sky Science Ltd, West  
Midlands, UK

<sup>4</sup>Now at Sustainability Dept., Yorkshire Water,  
Leeds, UK

<sup>5</sup>Now at Manchester Metropolitan University,  
Manchester, UK

**Correspondence**

A. Rob MacKenzie, Birmingham Institute of  
Forest Research, University of Birmingham,  
Birmingham B15 2TT, UK.  
Email: a.r.mackenzie@bham.ac.uk

**Funding information**

Natural Environment Research Council, Grant/  
Award Numbers: NE/N020502/1, NE/  
P003486/1, NE/S015833/1, NE/T000449/1,  
NE/T012323/1; University of Birmingham;  
The JABBS Trust; Norbury Park Estate; The  
John Horseman Trust; Ecological Continuity  
Trust

**Abstract**

The ecosystem services provided by forests modulate runoff generation processes, nutrient cycling and water and energy exchange between soils, vegetation and atmosphere. Increasing atmospheric CO<sub>2</sub> affects many linked aspects of forest and catchment function in ways we do not adequately understand. Global levels of atmospheric CO<sub>2</sub> will be around 40% higher in 2050 than current levels, yet estimates of how water and solute fluxes in forested catchments will respond to increased CO<sub>2</sub> are highly uncertain. The Free Air CO<sub>2</sub> Enrichment (FACE) facility of the University of Birmingham's Institute of Forest Research (BIFoR) is the only FACE in mature deciduous forest. The site specializes in fundamental studies of the response of whole ecosystem patches of mature, deciduous, temperate woodland to elevated CO<sub>2</sub> (eCO<sub>2</sub>). Here, we describe a dataset of hydrological parameters – seven weather parameters at each of three heights and four locations, shallow soil moisture and temperature, stream hydrology and CO<sub>2</sub> enrichment – retrieved at high frequency from the BIFoR FACE catchment.

**KEYWORDS**

climate change, elevated carbon dioxide, long-term monitoring, soil moisture, soil–vegetation–atmosphere transfer, stream metabolism

This is an open access article under the terms of the Creative Commons Attribution License, which permits use, distribution and reproduction in any medium, provided the original work is properly cited.

© 2021 The Authors. *Hydrological Processes* published by John Wiley & Sons Ltd.

## 1 | DATASET NAME

BIFoR FACE catchment data.

## 2 | SITE DESCRIPTION

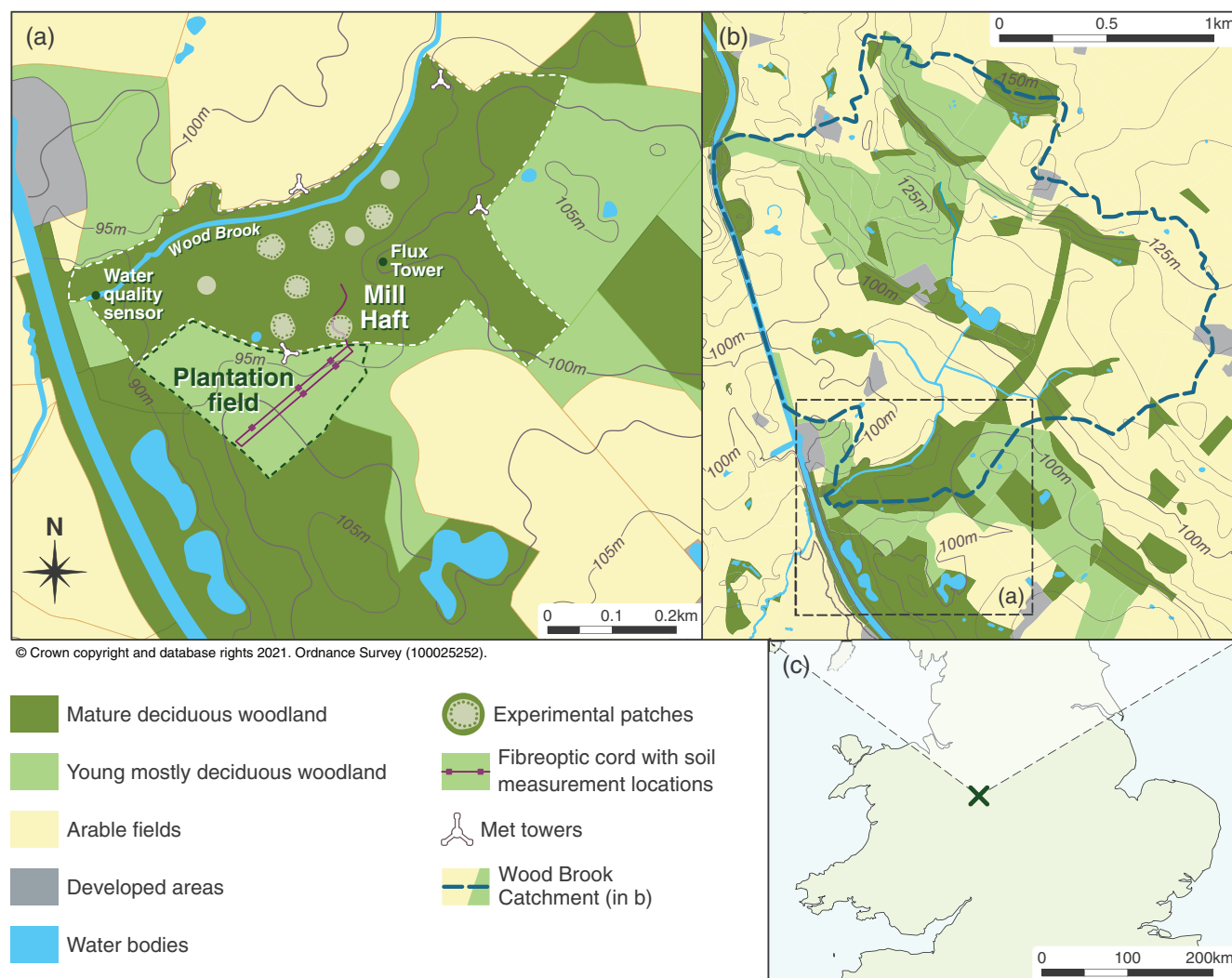
### 2.1 | The Wood Brook catchment and FACE facility

The BIFoR FACE facility (52°48'3.6" N, 2°18'0" W, 106 m above mean sea level [amsl]) is situated in a mainly agricultural headwater catchment in the UK drained by the Wood Brook, and consists of the main elevated CO<sub>2</sub> (eCO<sub>2</sub>) facility and a number of other study sites including tree planting of different age and management (Figure 1). Wood Brook is a second-order stream with a 3.1 km<sup>2</sup> catchment ranging in elevation from 90 to 150 m amsl (Blaen, Brekenfeld, et al., 2017) and subsequently draining into the River Severn catchment (the most voluminous river in England and Wales). The entire

catchment is undergoing substantial land-use change, having been converted to organic farming since 2019. Herbal leys (i.e., mixed grass, legumes, and deep-rooting herbs) and tree planting now replace what was previously grass monoculture or arable.

The BIFoR FACE forest (Mill Haft, Figure 1), at the bottom of the Wood Brook catchment, is a deciduous woodland, with dominant (25-m tall) English oak (*Quercus robur*) planted around 1850 (Hart et al., 2019). Each stem with diameter-at-breast-height greater than 10 cm has been geolocated and tagged. Centimetre-scale forest structure was measured by a lidar overflight in August 2014 and by terrestrial laser scanning (private communication, Eric Casella, Forest Research, Surrey, UK); this structure establishes the basis for penetration of air, light, and water into the forest canopy.

The central, eCO<sub>2</sub> component of BIFoR FACE consists of nine experimental patches of 15 m radius (Figure 2; Hart et al., 2019; Norby et al., 2015). Three undisturbed patches have no CO<sub>2</sub>-dosing infrastructure. Three 'control' patches are exposed to ambient CO<sub>2</sub> (aCO<sub>2</sub>) concentrations, delivered via the same infrastructure used in



**FIGURE 1** (a) BIFoR FACE is located in Mill Haft (white dashed line; lighter patches show locations of the FACE arrays and control patches) in a patchwork of old-growth forest, new tree planting on arable land, and arable fields. (b) Wood Brook catchment (blue dashed line) with the stream running along the northern edge of Mill Haft. (c) Central England location of Mill Haft





**FIGURE 2** Views of the BIFoR FACE catchment. Top: the FACE facility viewed from the top of the 40-m tower, looking southwest. The young plantation containing the fibre-optic cable is visible centre-left of the image. Bottom left: The lower water quality station on Wood Brook. Bottom right: the young plantation, looking northeast, down the rows between which the fibre-optic cable is buried

the three ‘treatment’ (eCO<sub>2</sub>) patches. The eCO<sub>2</sub> patches are maintained at +150 ppmv above ambient CO<sub>2</sub> at all levels of the canopy during daylight hours from oak bud burst (ca. 1st April) to last leaf fall (ca. 31st October). The first season with eCO<sub>2</sub> was 2017 and the treatment will continue until at least 2026. A parallel study of the effect of nitrogen and phosphorus addition began in 2020 in the forest away from the FACE patches.

Elsewhere in the Wood Brook catchment, in partnership with the estate owners, young mixed mostly-deciduous plantations are

subjected to different manipulation treatments including irrigation and fertilization experiments.

## 2.2 | The environmental context

Wood Brook catchment is in the temperate maritime zone of north-west Europe (Barry & Chorley, 2010). The site-mean annual temperature (MAT) measured between 2016 and 2019 was  $10.6 \pm 0.8^\circ\text{C}$  and

its mean annual precipitation (MAP) was  $676 \pm 66$  mm. The catchment is within the area covered by the Central England Temperature record, which provides a time series back to 1772 (Parker et al., 1992). The Wood Brook catchment is situated in a Nitrate Vulnerable Zone (European Union Directive 91/676/EEC) with mean nitrate concentrations in the Wood Brook ranging from 5 to  $7 \text{ mg N L}^{-1}$  (Blaen, Khamis, et al., 2017). The contemporary reactive nitrogen deposition from the atmosphere in the catchment is  $\sim 22 \text{ kg N ha}^{-1} \text{ y}^{-1}$  (private communication, S. Tomlinson, UK Centre for Ecology & Hydrology). Deposition of this scale represents less than about 15% of the total nitrogen nutrition of temperate deciduous forest trees (Rennenberg & Dannenmann, 2015).

### 3 | METHODS

This summary complements online introductory videos (<https://tinyurl.com/y3a2hkxx>) and draws on the facility 'White Book' (<https://www.birmingham.ac.uk/research/bifor/face/index.aspx>), which is a live web-document containing extensive details of all the projects undertaken at the facility and details of instrument placement (heights, depths, spatial separation).

The Wood Brook is equipped with two water quality monitoring stations (Figure 2, bottom left) comprising in-stream sensors measuring stage, water temperature, and electrical conductivity up to every 10 s. Sensors to measure further parameters (UV-VIS absorbance, DO, pH, and turbidity) are housed in an insulated kiosk located on the streambank (Blaen, Khamis, et al., 2017). An ISCO peristaltic pump (Lincoln, NE, USA) passes 1 L of stream water through these sensors every hour. Stream monitoring is supplemented with campaign-based sampling facilitated by networks of surface water ISCO autosamplers, for instance during tracer tests (Blaen, Brekenfeld, et al., 2017; Blaen, Khamis, et al., 2017), as well as spatially nested multi-level mini-piezometers installed in the streambed to investigate streambed biogeochemical processes and groundwater-surface water interactions (Comer-Warner et al., 2019; Comer-Warner et al., 2020). A stage-discharge relationship for the Wood Brook was developed by Blaen, Khamis, et al. (2017).

Volumetric soil moisture content in the main BIFoR FACE facility is monitored by 12 cm long frequency domain reflectometry sensors (CS655 by Campbell Scientific [Logan, USA],  $\pm 3\%$  v/v for typical soils) installed diagonally from the surface in triangular groups of three spaced 1 m apart, with two groups in the 'control' and 'treatment' patches and one group in the undisturbed patches, and monitoring at 15 to 30 min resolution.

In addition, one of the juvenile plantations close to the catchment outlet (Figure 2, bottom right) has been instrumented since 2016 with active fibre-optic distributed temperature sensing (FO-DTS connected to a XT-DTS™ unit and a heat pulse system by Silixa Ltd., London, UK). The fibre-optic system can measure soil temperature every 30 s and soil moisture every 6 h at a submeter spatial resolution, resulting in 1850 soil temperature and soil moisture sampling locations across the site, ranging from 10–40 cm depths (Abesser et al., 2020). The

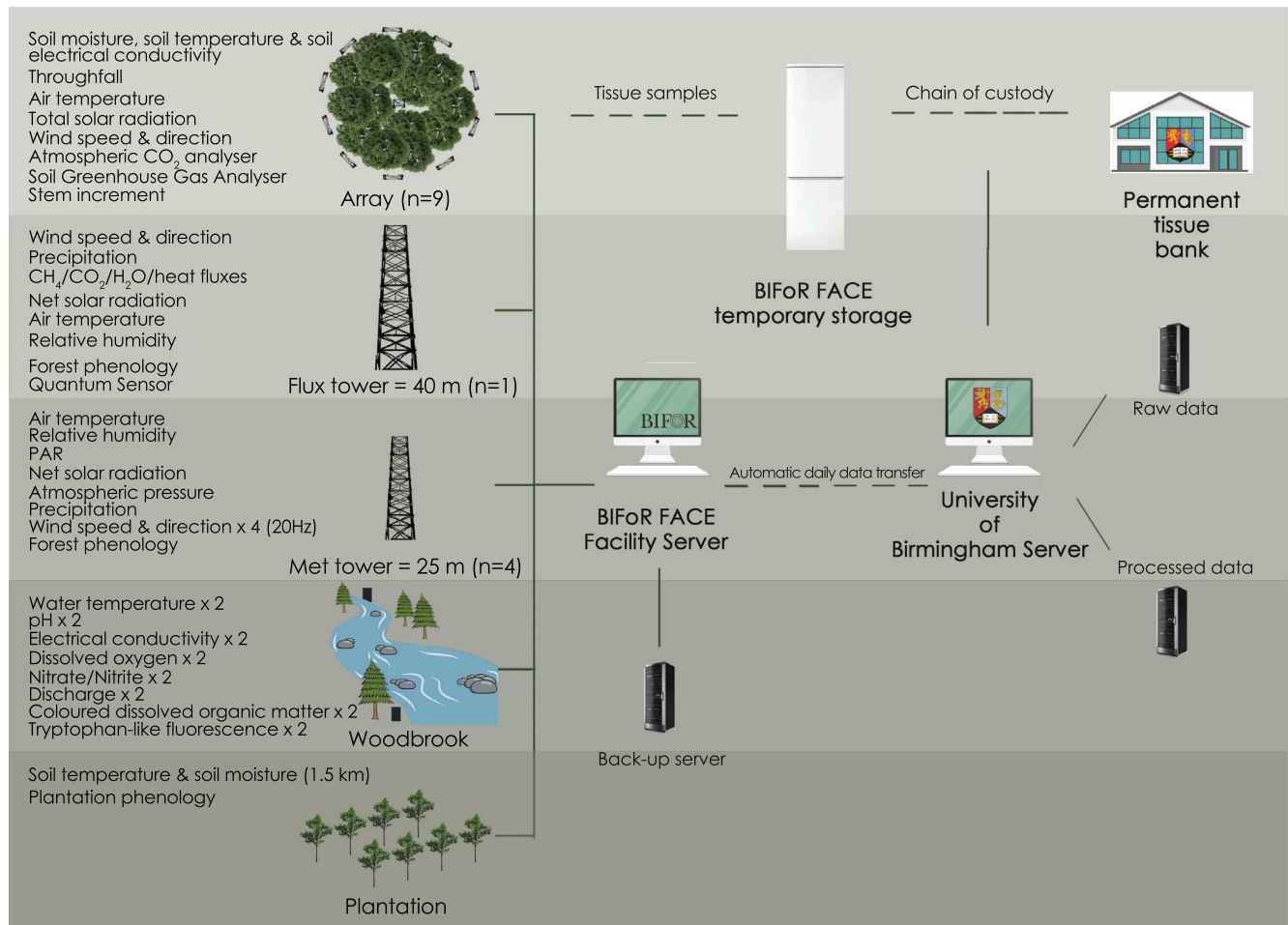
current dataset provides 6-hourly retrievals of soil temperature and soil moisture. The retrieval from the FO-DTS has a maximum at 38% v/v, a value empirically determined from a soil-specific field calibration against point soil moisture sensors installed adjacent to the fibre-optic cable. Uncertainties of ca. 3–5% v/v have been reported for soil moisture measurements with the DTS technique (Gamage et al., 2018).

Each treatment and control experimental patch is ringed by 16 free-standing, climbable, lattice towers that reach 2–3 m above the local oak canopy; a 17th tower is sited in the centre of each patch. The lattice towers are secured by helical piles; the experimental site contains no concrete foundations or guy wires. Access to the experimental patches is via low-level walkways raised approximately 30 cm above ground level to prevent compaction. Canopy access above 5 m is contracted to climbing arborists or achieved using a bespoke canopy access system (CAS) installed from the 17th central tower of each infrastructure array. Tissue samples (e.g., leaves, catkins, insects) are collected via the CAS and from ground-based collectors. Although not the subject of the present Data Note, we include a description of tissue curation for completeness and to demonstrate the joined-up nature of the BIFoR FACE data pipeline. All tissue is recorded when sampled and a chain-of-custody initiated using Pro-curo (Pro-curo software Ltd., Horsham, UK). Quenching of biological samples to  $-70^\circ\text{C}$  is accomplished on-site using a dry shipper (BioTrex-10, Statebourne Cryogenics, Tyne & Wear, UK), avoiding the need for liquid nitrogen in the field. The permanent tissue bank resides at the University of Birmingham Edgbaston campus.

Four meteorological masts are located at the periphery of the woodland and measure a wide range of weather parameters (see Figure 3), with sensors located at 2 m from the surface and/or at the top of the towers at 25 m. Sensors are HMP 155RH for air temperature and relative humidity and PTB210 for atmospheric pressure by Vaisala (Helsinki, Finland); LI190 for PAR light by LI-COR Biosciences (Lincoln, Nebraska, USA); Lite 2 for net radiation by Kipp & Zonen (Delft, The Netherlands); TR-525M for precipitation by Texas Electronics (Dallas, TX, USA). Wind speed and direction is measured at 25 m on the FACE infrastructure with a WMT701 by Vaisala. Additional weather parameters are measured in the FACE infrastructure including ground rain gauges (ARG100), air temperature thermistors (107) top of the canopy solar radiation (LP02) all by Campbell Scientific (Logan, Utah, USA) which also supplied the data loggers used across the site (CR6 and CR1000X). A 40 m 'flux tower' stands towards the downwind end of the wooded area but does not yet provide data to the Dataset.

Figure 3 illustrates the flow of data and tissue samples into their permanent repositories. Other equipment (not shown) is deployed ad hoc within specific projects. Data is transferred daily to the University of Birmingham servers and the raw and processed data are stored separately to improve backup redundancy. The data processing step here involves re-formatting for ease-of-use and human-in-loop quality assurance to remove evident issues (e.g., nil raingauge returns when staff observe rain or data far outside the normal range), flagged or corroborated by technical staff as they pass the data to the Data Manager.





**FIGURE 3** A schematic view of the sensor deployment and tissue and data flow through BIFoR FACE and Wood Brook. The main experimental infrastructure elements are shown (left); replicates are indicated by 'n = '. Data from electronic sensors are recorded in networked field dataloggers and relayed to the facility server. Back-up is carried out on-site and by daily data download to the main University of Birmingham servers with Retrospect software (Retrospect Inc. USA). Initial quality assurance is under the control of the BIFoR Data Manager (author GC) before data is released to the BIFoR FACE community. A parallel system operates for physical samples, the metadata from which enters the BIFoR FACE database via chain-of-custody software (Pro-curo Software Ltd, West Sussex, UK)

To complement the experimental infrastructure in the Wood Brook catchment and BIFoR FACE facility, an integrated groundwater–surface water model has been developed and validated by a combination of flow signatures and applied to investigate stream and subsurface water and energy balance in response to forest shading (Qiu et al., 2019).

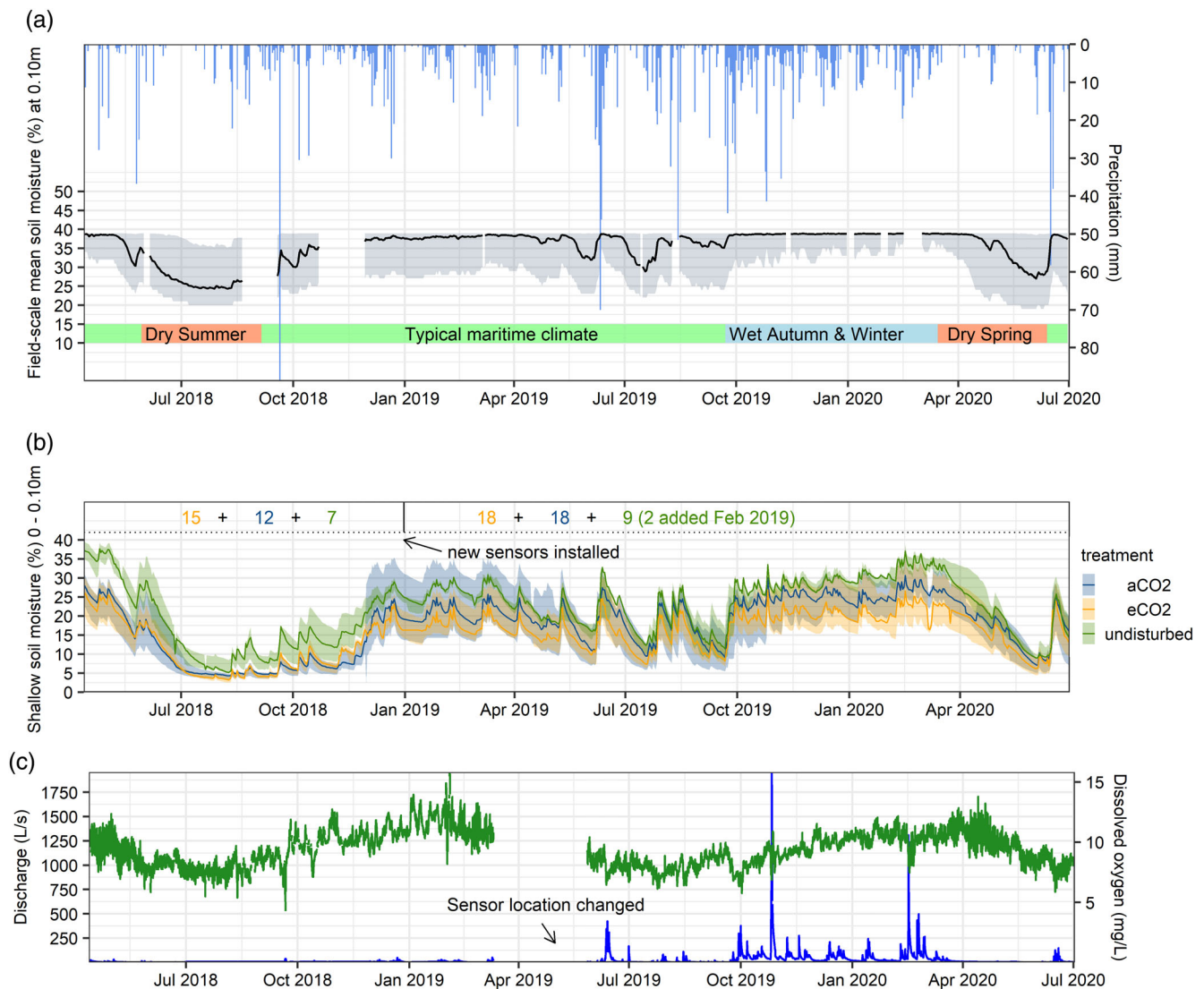
## 4 | EXAMPLE RESULTS

### 4.1 | Soil moisture dynamics, stream discharge, and water quality in mature forest and young plantation

Example data demonstrate the value of long-term integrated monitoring in ecohydrological observatories such as the Wood Brook catchment (Figure 4). The variability of the temperate maritime climate is

evident: prolonged wetting and drying events are shown clearly in both time series, overlaid by occasional, shorter, high-intensity rainfall events. Signals can take a long time to emerge within such variability, which is a key argument for a long-term experimental platform such as BIFoR FACE. The time series at this relatively early stage suggests that: (i) the plantation is systematically wetter than the neighbouring forest even though the plantation slopes downwards towards Mill Haft; (ii) there is significant spatial variability in the plantation and Mill Haft; and (iii) the  $e\text{CO}_2$  patches are drier than the  $a\text{CO}_2$  and undisturbed patches. Point (iii) may be a result of spatial variability in the forest; the strength of soil drying or moistening due to  $e\text{CO}_2$ , if any is present (cf. Drake et al., 2016; Ellsworth, 1999), remains to be quantified.

Corresponding discharge at the Wood Brook catchment outlet highlights the general 'flashiness' of the flow regime, with relatively fast responses to precipitation events for a permeable catchment as well as fast recession of flow (Figure 4c). The time series also indicates



**FIGURE 4** (a) Time series of daily top-of-forest precipitation and field scale mean soil moisture from distributed temperature sensing (DTS) by fibre-optic cable embedded at 10 cm depth between rows on young broadleaf tree planting (6 years) immediately south of the FACE forest (see Figure 1). (b) Time series of shallow volumetric soil moisture from an array of CS655 sensors in the elevated (eCO<sub>2</sub>), ambient (aCO<sub>2</sub>) and undisturbed (i.e., with no infrastructure) CO<sub>2</sub> patches of the FACE forest. The numbers of sensors was increased in December 2018 and February 2019, as reported in the top of the panel. (c) Discharge (in blue) and dissolved oxygen (in green) measured on the Wood Brook stream (see Figures 1 and 2)

some of the challenges in maintaining consistent quality control throughout long-term observation networks. In addition to data losses induced by power supply failures in April–June 2019, observed values up to early 2019 were an order of magnitude lower than from June 2019 onwards due to repeated sedimentation of the water level sensor and recurring changes to the channel cross sectional profile that finally led to a relocation of the sensor and to a more stable measurement as indicated in Figure 4c. The data offers the ability to observe long-term trends in catchment behaviour in response to land-use changes, mechanistic process understanding of in-stream metabolism and biogeochemical processing, and event-based activation of pollution sources (Blaen, Khamis, et al., 2017).

## 5 | DATA PROTOCOL AND OWNERSHIP

BIFoR FACE is highly collaborative in nature and welcomes partners<sup>1</sup> who wish to contribute as part of a multidisciplinary Community of Practice. All projects form part of the overall collaborative effort to understand catchment behaviour and forest form and function, and all facility users sign a data protocol to that effect (see the online White Book described above). The BIFoR FACE science community believe and advocate transparency in science, assured through open data, after an agreed period of use by the data originators typically equal to the duration of the project (i.e., 1–5 years). Data ownership and data originators are included in the dataset metadata. The dataset is

supported by a full-time data manager (author GC), responsible for tracking all data and tissue samples (e.g., leaf and insect collections) and is the first point of contact for specific data requests, including the raw data. The data manager and the researchers are responsible for the quality control of the data which usually consists of constraining values within physical limits, removing outliers after inspection and filling gaps with alternative sources (if available) or via interpolation methods.

## 6 | CONTRIBUTORS

In addition to the authors of the present work, technical and scientific assistance and advice has contributed to the BIFoR FACE dataset. The soil moisture FO-DTS system installation was led by Francesco Ciocca while holding joint positions at the University of Birmingham and at Silixa Ltd. (London, UK). The BIFoR FACE facility cannot run without the dedicated support of its operations team (currently; Nicholas Harper, Peter Miles, Thomas Downes, Gael Denny and Robert Grzesik, formerly; Gary McClean and Anna Gardner). Foundational contributions to the design and implementation of the facility were made by Michael Tausz and Sabine Tausz-Posch. The FACE facility eCO<sub>2</sub> treatment uses the system designed by John Nagy and installed by Keith Lewin, both of Brookhaven National Lab, USA.

## ACKNOWLEDGEMENTS

We are grateful to the editor and referees for their careful and constructive efforts to improve this note. We acknowledge the considerable scientific input of visiting fellows (David Ellsworth, Kristine Crous, Debbie Hemming, Rich Norby, Theresa Blume and Mantha Phanikumar) and former researchers (Will Allwood, Alex Poynter). We gratefully acknowledge strategic guidance from BIFoR Directors (Rob Jackson, Jerry Pritchard, and Nicola Spence) and the Science Committee (Christine Foyer, Vincent Gauci, Francis Pope, and Estrella Luna Diez). BIFoR FACE is supported by the JABBS Trust, Norbury Park Estate, The John Horseman Trust, Ecological Continuity Trust, the Natural Environment Research Council (NERC; grants NE/S015833/1, NE/P003486/1, NE/N020502/1; NE/T000449/1; NE/T012323/1), and the University of Birmingham.

## DATA AVAILABILITY STATEMENT

The BIFoR FACE dataset is publicly accessible at <https://doi.org/10.25500/edata.bham.00000564>. Datasets are compressed zip files, usually in csv format but with the larger datasets stored in binary fst format. The binary files can be opened with code available in R (R Core Team, 2020) via the *fst* library (Klik, 2020). All datasets come with a daily resolution except the stream data which is hourly and the DTS data that comes in its original sampling resolution with a 1 m spatial resolution. Associated with the dataset is a readme file containing metadata. An inquiry form is available on the BIFoR website for potential collaborators wishing to use the facility (<https://www.birmingham.ac.uk/research/bifor/face/using-face.aspx>).

## ORCID

A. Rob MacKenzie  <https://orcid.org/0000-0002-8227-742X>

Stefan Krause  <https://orcid.org/0000-0003-2521-2248>

Susan E. Quick  <https://orcid.org/0000-0003-4239-5285>

David M. Hannah  <https://orcid.org/0000-0003-1714-1240>

## ENDNOTE

<sup>1</sup> <https://www.birmingham.ac.uk/research/bifor/get-involved/index.aspx>

## REFERENCES

- Abesser, C., Ciocca, F., Findlay, J., Hannah, D., Blaen, P., Chalari, A., Mondanos, M., & Krause, S. (2020). A distributed heat pulse sensor network for thermo-hydraulic monitoring of the soil subsurface. *Quarterly Journal of Engineering Geology and Hydrogeology*, 53(3), 352–365. <https://doi.org/10.1144/qjgegh2018-147>
- Barry, R. G., & Chorley, R. J. (2010). *Atmosphere, weather and climate* (9th ed.). Oxford, U.K: Routledge.
- Blaen, P., Brekenfeld, N., Comer-Warner, S., & Krause, S. (2017). Multi-tracer field fluorometry: Accounting for temperature and turbidity variability during stream tracer tests. *Water Resources Research*, 53, 9118–9126. <https://doi.org/10.1002/2017WR020815>
- Blaen, P., Khamis, K., Lloyd, C., Comer-Warner, S., Ciocca, F., Thomas, R. M., MacKenzie, A. R., & Krause, S. (2017). High-frequency monitoring of catchment nutrient exports reveals highly variable storm-event responses and dynamic source zone activation. *J. Geophys. Res-Biogeosciences*. <https://doi.org/10.1002/2017JG003904>
- Comer-Warner, S., Ullah, S., Kettridge, N., Gooddy, D., & Krause, S. (2019). Seasonal variability of sediment controls on carbon cycling in an agricultural stream. *Science of the Total Environment*, 688, 732–741. <https://doi.org/10.1016/j.scitotenv.2019.06.317>
- Comer-Warner, S. A., Gooddy, D. C., Ullah, S., Glover, L., Kettridge, N., Wrexler, S. K., Kaiser, J., & Krause, S. (2020). Seasonal variability of sediment controls of nitrogen cycling in an agricultural stream. *Biogeochemistry*, 148, 31–48. <https://doi.org/10.1007/s10533-020-00644-z>
- Drake, J. E., Macdonald, C. A., Tjoelker, M. G., Crous, K. Y., Gimeno, T. E., Singh, B. K., Reich, P. B., Anderson, I. C., & Ellsworth, D. S. (2016). Short-term carbon cycling responses of a mature eucalypt woodland to gradual stepwise enrichment of atmospheric CO<sub>2</sub> concentration. *Global Change Biology*, 22, 380–390. <https://doi.org/10.1111/gcb.13109>
- Ellsworth, D. S. (1999). CO<sub>2</sub> enrichment in a maturing pine forest: Are CO<sub>2</sub> exchange and water status in the canopy affected? *Plant, Cell & Environment*, 22, 461–472. <https://doi.org/10.1046/j.1365-3040.1999.00433.x>
- Gamage, D. N. V., Biswas, A., Strachan, I. B., & Adamchuk, V. I. (2018). Soil water measurement using actively heated fiber optics at field scale. *Sensors*, 18(4), 1116. <https://doi.org/10.3390/s18041116>
- Hart, K., Curioni, G., Blaen, P., Thomas, R. M., Harper, N., Miles, P., Lewin, K., Nagy, J., Bannister, E., Cai, X., Krause, S., Tausz, M., & MacKenzie, A. R. (2019). Characteristics of Free Air Carbon Dioxide Enrichment of a Northern Temperate Mature Forest. *Glob Change Biol*. <https://doi.org/10.1111/gcb.14786>
- Klik M. (2020). *fst: Lightning fast serialization of data frames*. R package version 0.9.4. <https://CRAN.R-project.org/package=fst>
- Norby, R. J., De Kauwe, M. G., Domingues, T. F., Duursma, R. A., Ellsworth, D. S., Goll, D. S., Lapola D. M., Luus K. A., MacKenzie A. R., Medlyn B. E., Pavlick R., Rammig A., Smith B., Thomas R. M., Thonicke K., Walker A. P., Yang X., & Zaehle, S. (2015). Model-data synthesis for the next generation of forest FACE experiments. *New Phytologist*. <https://doi.org/10.1111/nph.13593>



- Parker, D. E., Legg, T. P., & Folland, C. K. (1992). A new daily Central England temperature series, 1772-1991. *International Journal of Climatology*, 12, 317-342.
- Qiu, H., Blaen, P., Comer-Warner, S., Hannah, D. M., Krause, S., & Phanikumar, M. S. (2019). Evaluating a coupled phenology - Surface energy balance model to understand stream - Subsurface temperature dynamics in a mixed-use farmland catchment. *Water Resources Research*, 55, 1675-1697. <https://doi.org/10.1029/2018WR023644>
- R Core Team. (2019). *R: A language and environment for statistical computing*. R Foundation for Statistical Computing, Vienna, Austria. <https://www.R-project.org/>
- Rennenberg, H., & Dannenmann, M. (2015). Nitrogen nutrition of trees and temperate forests - The significance of nitrogen availability in pedosphere and atmosphere. *Forests*, 6, 2820-2835.

**How to cite this article:** MacKenzie AR, Krause S, Hart KM, et al. BIFoR FACE: Water-soil-vegetation-atmosphere data from a temperate deciduous forest catchment, including under elevated CO<sub>2</sub>. *Hydrological Processes*. 2021;35:e14096. <https://doi.org/10.1002/hyp.14096>