

## COVID-19 in haematology patients

Morrissey, Hana; Ball, Patrick; Mandal, Anandadeep; Nevil, Alan; Paneesha, Shankara; Basu, Supratik; Karim, Farheen; Hossain, Md Imran; Phillips, Neil; Khawaja, Jahanzeb; Stone, Jackie; Murray, Duncan; Randall, Katie; Murthy, Vidhya; Kishore, Bhuvan; Nikolousis, Manos; Pratt, Guy; Neilson, Jeff; Pemberton, Nick; Wandroo, Farooq

DOI:

[10.1111/bjh.17136](https://doi.org/10.1111/bjh.17136)

License:

Other (please specify with Rights Statement)

*Document Version*

Peer reviewed version

*Citation for published version (Harvard):*

Morrissey, H, Ball, P, Mandal, A, Nevil, A, Paneesha, S, Basu, S, Karim, F, Hossain, MI, Phillips, N, Khawaja, J, Stone, J, Murray, D, Randall, K, Murthy, V, Kishore, B, Nikolousis, M, Pratt, G, Neilson, J, Pemberton, N & Wandroo, F 2020, 'COVID-19 in haematology patients: a multicentre West Midlands clinical outcomes analysis on behalf of West Midlands Research Consortium', *British Journal of Haematology*, vol. 192, no. 1, pp. e11-e14. <https://doi.org/10.1111/bjh.17136>

[Link to publication on Research at Birmingham portal](#)

### **Publisher Rights Statement:**

This is the peer reviewed version of the following article: Morrissey, H., Ball, P., Mandal, A., Nevil, A., Paneesha, S., Basu, S., Karim, F., Hossain, M.I., Phillips, N., Khawaja, J., Stone, J., Murray, D., Randall, K., Murthy, V., Kishore, B., Nikolousis, M., Pratt, G., Neilson, J., Pemberton, N. and Wandroo, F. (2020), COVID-19 in haematology patients: a multicentre West Midlands clinical outcomes analysis on behalf of the West Midlands Research Consortium. *Br. J. Haematol.*, which has been published in final form at: <https://doi.org/10.1111/bjh.17136>. This article may be used for non-commercial purposes in accordance with Wiley Terms and Conditions for Use of Self-Archived Versions.

### **General rights**

Unless a licence is specified above, all rights (including copyright and moral rights) in this document are retained by the authors and/or the copyright holders. The express permission of the copyright holder must be obtained for any use of this material other than for purposes permitted by law.

- Users may freely distribute the URL that is used to identify this publication.
- Users may download and/or print one copy of the publication from the University of Birmingham research portal for the purpose of private study or non-commercial research.
- User may use extracts from the document in line with the concept of 'fair dealing' under the Copyright, Designs and Patents Act 1988 (?)
- Users may not further distribute the material nor use it for the purposes of commercial gain.

Where a licence is displayed above, please note the terms and conditions of the licence govern your use of this document.

When citing, please reference the published version.

### **Take down policy**

While the University of Birmingham exercises care and attention in making items available there are rare occasions when an item has been uploaded in error or has been deemed to be commercially or otherwise sensitive.

If you believe that this is the case for this document, please contact [UBIRA@lists.bham.ac.uk](mailto:UBIRA@lists.bham.ac.uk) providing details and we will remove access to the work immediately and investigate.

# **COVID-19 in Haematology patients: A Multi-centre West Midlands Clinical Outcomes Analysis on Behalf of West Midlands Research Consortium**

## **Running title: COVID-19 in Haematology patients**

Since first encountered, it has been clear that whilst many patients with COVID-19 experience relatively minor symptoms, some develop more serious disease.<sup>1-2</sup> Studies have suggested that oncology patients, including haematological malignancies, have increased risk of severe COVID-19 disease with increased morbidity and mortality.<sup>3-5</sup>

This retrospective study, conducted by clinicians and researchers from nine West Midlands hospitals, included all adult patients with both an underlying haematological disorder and confirmed COVID-19, diagnosed between 01/03/2020 and 31/05/2020. A standardised data collection form collected demographic, clinical, laboratory, radiological and outcome data. SARS-Cov-2 was diagnosed by RT-PCR. Ethical clearance waiver for the audit was received from all hospitals.

Patients were categorized based upon their underlying haematological conditions; those on active chemotherapy, having relapsed and or refractory disease, acute myeloid leukaemia with adverse cytogenetics, post auto or allogeneic transplant, extranodal T-cell lymphoma, multiple myeloma, post splenectomy and sickle cell disease were classified high risk. Intermediate risk included Hodgkin's and non-Hodgkin's lymphoma patients not on any treatment, myeloproliferative neoplasms and myelodysplastic syndrome. The low risk cohort were patients with non-malignant haematological conditions and patients in complete remission having completed treatment >6months ago, adapted from the 2012 categorisation by Armand.<sup>6</sup> Severe COVID-19 infection was classified on the presence of any one of: oxygen saturation  $\leq 90\%$  on room air, respiratory rate  $\geq 24$  breaths per minute; and/or bilateral infiltrates on lung imaging as defined in WHO guidelines.<sup>7</sup>

Statistical analysis used IBM SPSS® version 26 and STATA SE®16. Kruskal–Wallis tests compared observations for the hazard event, i.e. survival and non-survival. For testing of three groups, the ANOVA-one-way-test, coupled with the Tukey-post-test was utilized. Using logistic regression and the Cox-proportional hazards model, the impact, and the survival estimates of these various factors, was studied.

The median age was 70 years [IQR 61,78; range 18,95]. Men (57.5%) were the majority compared to women (41.5%). Regarding ethnicity, 76% of patients were Caucasian. There were 82% of patients with a malignant haematological disorder whilst 18% had non-malignant conditions. The commonest co-morbidities in this study cohort were hypertension (41%), ischaemic heart disease (22%), diabetes mellitus (21%), chronic lung disease (20%) and obesity (10%), and 30% had no documented co-morbidity. The most common symptoms experienced on admission were shortness of breath (58%), cough (43%) and fever (33%). Only 4.4% of patients were asymptomatic and 63% of patients had severe COVID-19 symptoms at presentation. The UK government COVID-19 data (coronavirus.data.gov.uk) on 19/6/2020 reported 300,469 confirmed COVID-19 cases and 42,285 deaths, indicating 14% mortality for all infections and 30% for hospitalised patients. Our mortality was 55% (RR 1.8).

Chest x-ray findings ( $p=0.002$ ), pulmonary infiltrates on computerised tomography (CT) scan ( $p=0.023$ ), age ( $p=0.032$ ) and obesity (odd's ratio: 2.34) were independent variables and significant predictors of mortality. Risk factors identified in other series such as diabetes or hypertension or ethnicity, were not associated with an adverse outcome in this cohort. Our study finds that low oxygen saturation ( $p=0.015$ ), increased respiratory rate ( $p=0.001$ ) and high C-reactive protein ( $p=0.073$ ) were statistically significant predictors of mortality. Other

factors that were statistically significant includes breathlessness (p=0.011), confirmatory CT of pulmonary infiltrates (p=0.27) and patients showing abnormal finding on x-ray (p=0.003). The details are provided in the supplement. A multivariate analysis examined the odds ratio of the various significant factors (Table I).

**Table I: Predictive Analysis on in-hospital mortality on multivariate model**

Variables	Odds Ratio	Std. Err.
Breathlessness	2.28	0.735** (0.010)
Obesity	2.34	0.027* (0.058)
Heart Rate	1.01	0.002** (0.014)
SpO <sub>2</sub>	1.01	0.002** (0.035)
Respiratory Rate	1.03	0.010*** (0.002)
COVID-19 Severity	1.95	0.493*** (0.008)
Pulmonary Infiltrates (CT)	1.68	0.397** (0.026)
Chest imaging positive <sup>a</sup>	1.04	0.027* (0.078)
APTT	1.02	0.012** (0.016)
Fibrinogen	1.12	0.076* (0.086)
<b>Interaction Variables:</b>		
COVID-19 Severity and Malignancy	1.58	0.414* (0.079)
COVID-19 Severity and High Risk Group	2.14	0.697** (0.019)
COVID-19 Severity and Age	2.00	0.778* (0.075)
Age and High Risk Group	2.13	0.915* (0.080)

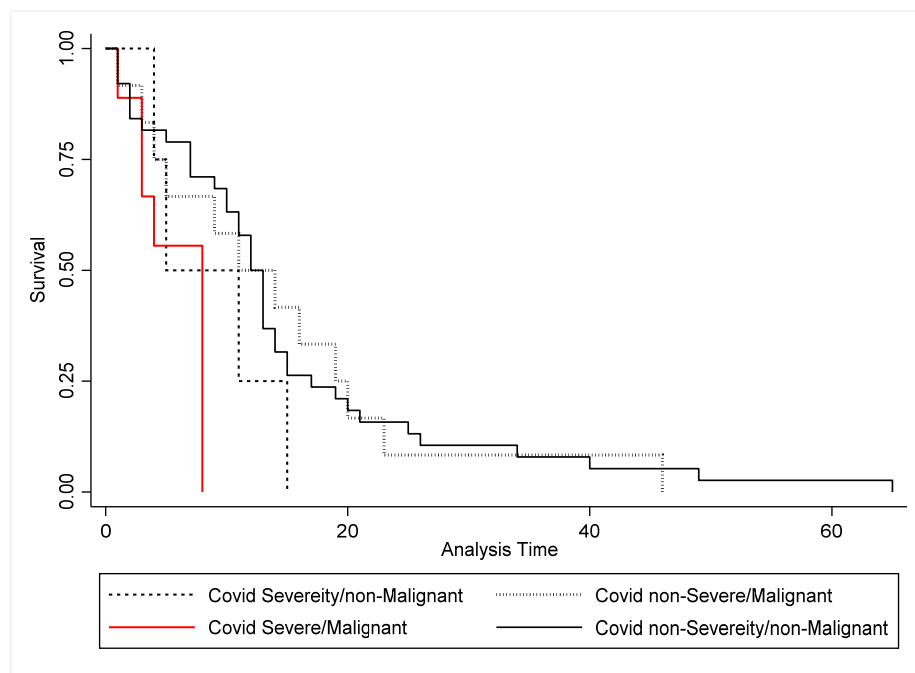
Note: \*\*\* indicates significant at 1 percent level, \*\* indicates significant at 5 percent level and \* indicates significance at 10 percent level. The p-values are provided in parenthesis.

<sup>a</sup> Positive i.e. abnormal finding on x-ray

Our model included several interaction variables that significantly affected COVID-19 mortality. Amongst the variables concerned, COVID-19 severity and haematology disease-based risk profile had greatest impact. Using logistic regression and a predictive marginal model, factors affecting mortality were examined. An odds ratio >1 indicated that the variable had a positive impact on death. COVID-19 severity had greatest impact on mortality. While COVID-19 severity and increase age increased the chance of death, by 24% and 15%, respectively, non-malignancy reduced the mortality. Of interest, obesity negatively impacted survival.

Using logistic regression and the Cox-proportional hazards model, the impact and survival estimates were examined. Figure I show that the severity of COVID-19 significantly impacted patients with malignant haematological conditions (75 % survival probability, the survival was 8 days as compared to 19 between severe & non-severe patients). Additionally, haematological disease-based risk status was significant for COVID-19 mortality (mean survival 7 days in the low risk group compared to 11 days among the high-risk group).

**Figure I: COVID-19 Severity and Malignancy**



Note: Figure 1 shows the graph of the survival functions. The X-axis represents the Analysis Time, which is the duration in days between the dates of onset of COVID-19 symptoms and death.

This is the largest series of patients yet reported with haematological conditions infected by SARS-Cov-2. These patients may present with COVID-19 differently. Fever was observed in 33% of our patient cohort as compared to 71% in the Clinical Characterisation Protocol UK (CCP-UK) study.<sup>8</sup> As in previous reports in the general population and specific blood cancers, older age was associated with higher mortality in this cohort. However other co-morbidities like diabetes or hypertension did not confer adverse outcome.<sup>9</sup> Overall mortality was 55%. This higher mortality could be due to this cohort, or that the West Midlands was the second most-affected region in the country. Atypical presentation, particularly the lower proportion with fever (33%) as highlighted in our series may have caused delay in patients seeking medical attention. This underlines the importance of close attention to inflammatory markers and identifying signs of developing coagulopathy.<sup>10</sup> Limitations result from collection at the height of the pandemic workload, where not all data parameters were collected for every patient. Additionally, only hospital managed patients' outcomes are reported.

The presence of lung infiltrates and other underlying lung pathology denotes a particularly high-risk group. Contrary to expectations, this cohort highlights that being on systemic chemotherapy did not increase risk of mortality. This suggests primary therapy for the haematological condition could be continued to avoid adverse impact on their underlying haematological condition.

### Acknowledgement

First author: Substantial contributions to research design, initial analysis and drafting the manuscript, second author: Substantial contributions to research design, initial analysis and drafting the manuscript, third author: Substantial contributions to the analysis and writing the results and the analysis of the statistical computations, fourth author: Substantial contributions to research design, data collection coordination and revision of the final draft of the manuscript, fifth author: Substantial contributions to research design, data collection

coordination and revision of the final draft of the manuscript, sixth author: Data description and initial analysis, all other authors performed the research and contributed to clinical data collection.

## References

1. Huang C, Wang Y, Li X, Ren L, Zhao J, Hu Y, et al. Clinical features of patients infected with 2019 novel coronavirus in Wuhan, China. *Lancet*. 2020;**395**(10223):497-506.
2. Guan W, Ni Z, Hu Y, Liang W, Ou C, He J, et al. Clinical Characteristics of Coronavirus Disease 2019 in China. *New Engl J Med*. 2020;**382**(18):1708-20.
3. Dai M, Liu D, Liu M, Zhou F, Li G, Chen Z, et al. Patients with Cancer Appear More Vulnerable to SARS-CoV-2: A Multicenter Study during the COVID-19 Outbreak. *Cancer discov*. 2020;**10**(6):783-91.
4. Martín-Moro F, Marquet J, Piris M, Michael BM, Sáez AJ, Corona M, et al. Survival study of hospitalised patients with concurrent COVID-19 and haematological malignancies. *Br J Haematol*. 2020;**190**(1):e16-e20.
5. Mato AR, Roeker LE, Lamanna N, Allan J, Leslie LA, Pagel JM, et al. Outcomes of COVID-19 in Patients with CLL: A Multicenter International Experience. *Blood*. 2020 *Online ahead of print* DOI: 10.1182/blood.2020006965
6. Armand P, Gibson CJ, Cutler C, Ho VT, Koreth J, Alyea EP, et al. A disease risk index for patients undergoing allogeneic stem cell transplantation. *Blood*. 2012;**120**(4):905-13.
7. World Health Organisation. Use of chest imaging in COVID-19. A rapid advice guide. World Health Organisation 2020 11th June:56.available from: <https://www.who.int/publications/i/item/use-of-chest-imaging-in-covid-19> (access date 31/08/20)
8. Docherty AB, Harrison EM, Green CA, Hardwick HE, Pius R, Norman L, et al. Features of 20 133 UK patients in hospital with covid-19 using the ISARIC WHO Clinical Characterisation Protocol: prospective observational cohort study. *Brit Med J*. 2020;**369**:m1985.
9. Scarfò L, Chatzikonstantinou T, Rigolin GM, Quaresmini G, Motta M, Vitale C, et al. COVID-19 severity and mortality in patients with chronic lymphocytic leukemia: a joint study by ERIC, the European Research Initiative on CLL, and CLL Campus. *Leukemia*. 2020;**34**:2354-63.
10. Agbuduwe C, Basu S. Hematological Manifestations of COVID-19: From Cytopenia to Coagulopathy. *Eur J Haematol*. 2020 Jul 14. *Online ahead of print* DOI: 10.1111/ejh.13491.